

LEA Name : Dover Area SD
Address : 101 Edgeway Road
Dover , PA 17315

County : York
AUN Number : 112671803
LEA Type : SD

Annual Financial Report Accuracy Certification Statement

For Fiscal Year Ending
6/30/2018

Pennsylvania Department of Education
&
Office of Comptroller Operations

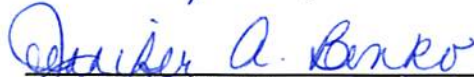
PDE-2056: Intermediate Unit
PDE-2057: School District, AVTS/CTC, Charter School,
and Special Program Jointure

CERTIFICATION: By signing this page I agree that the electronic data submitted is a complete and accurate statement of the financial operations and status of the local education agency for the fiscal year. It has been prepared in accordance with generally accepted accounting principles and established Commonwealth of PA reporting guidelines.



Chief School Administrator Signature

Date 11/29/18



Board Secretary Signature

Date 11/29/18

Jennifer A Benko

(717)292-3671

Ext :80202

Contact Person

Contact Person Telephone Number

jbenko@doversd.org

717-292-6024

Contact Person E-mail Address

Contact Person Fax Number

LEA Name : Dover Area SD
Address : 101 Edgeway Road
Dover , PA 17315

County : York
AUN Number : 112671803
LEA Type : SD

Annual Financial Report
Accuracy Certification Statement

For Fiscal Year Ending
6/30/2018


Pennsylvania Department of Education
&
Office of Comptroller Operations

PDE-2056: Intermediate Unit
PDE-2057: School District, AVTS/CTC, Charter School,
and Special Program Jointure


CERTIFICATION: By signing this page I agree that the electronic data submitted is a complete and accurate statement of the financial operations and status of the local education agency for the fiscal year. It has been prepared in accordance with generally accepted accounting principles and established Commonwealth of PA reporting guidelines.




Chief School Administrator Signature



Date



Board Secretary Signature



Date

Jennifer A Benko

Contact Person

(717)292-3671 Ext :80202

Contact Person Telephone Number

jbenko@doversd.org

Contact Person E-mail Address



Contact Person Fax Number

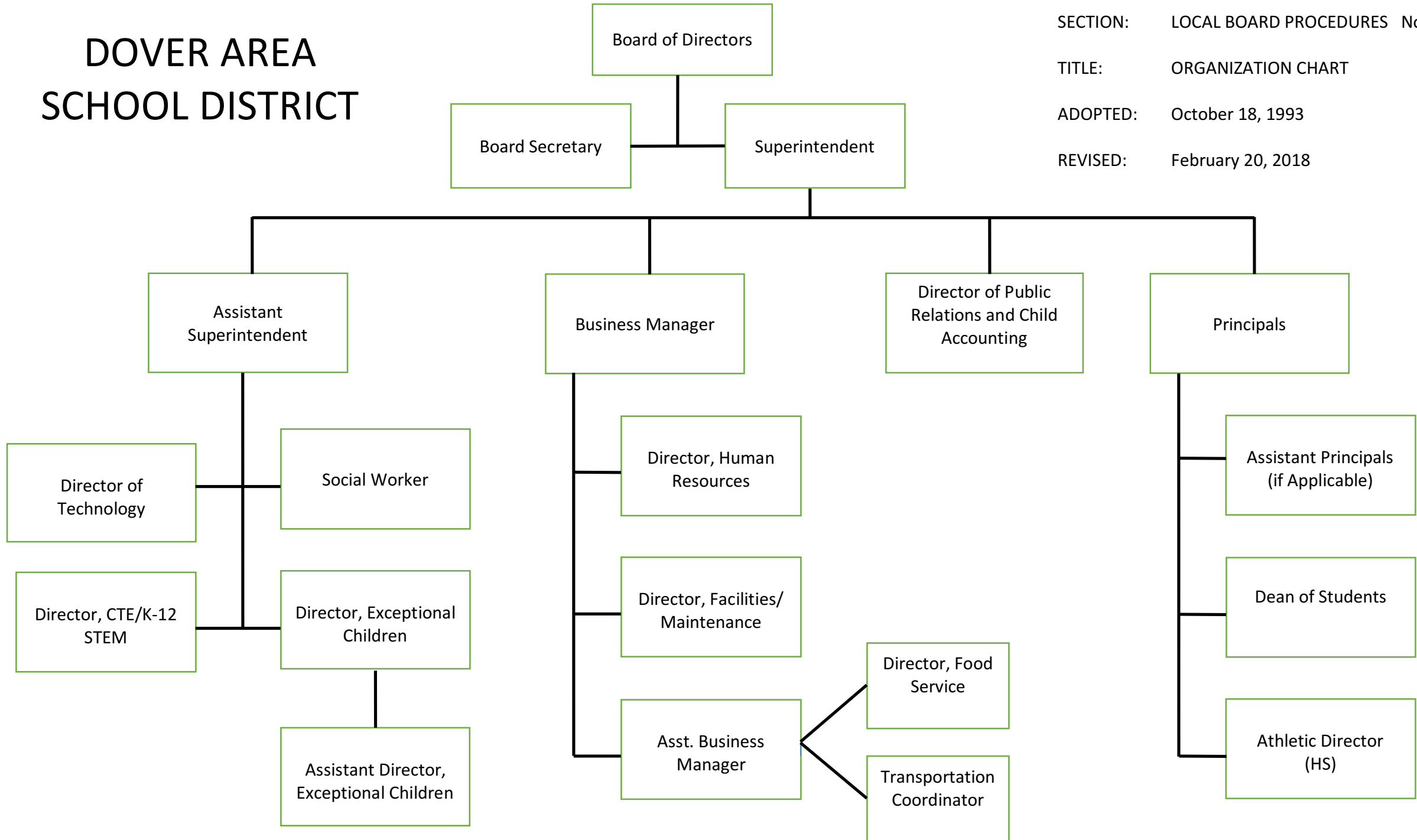
DOVER AREA SCHOOL DISTRICT

SECTION: LOCAL BOARD PROCEDURES No. 008

TITLE: ORGANIZATION CHART

ADOPTED: October 18, 1993

REVISED: February 20, 2018



Val Number

Description

Justification

16015 REP Fund 51: Object 300 is greater than object 500. Purchased services for food service contracted services should be coded to objects 571 and 572. Correct or enter a justification.

REP Fund 51 Object 300: \$808.00
 REP Fund 51 Object 500: \$0.00

This money was used for professional development for the Food Service staff.

16230 REP Fund 51 – Net Position - Beginning of Fiscal Year must equal Prior Year AFR, Net Position - End of Year. Justifications to this error must fully explain the situation that prompted a fund balance restatement. "Auditor Adjustment" is not a sufficient justification.

REP Fund 51 – Net Position - Beginning of Fiscal Year: \$-1,140,654.00
 REP Fund 51, Prior Year AFR, Net Position - End of Year: \$-1,052,073.00

Prior Period Adjustment - This variance is a result of implementation of GASB Statement 75 as of July 1, 2017.

30550 Revenue Detail: Tax Revenue Data must be reported consistently for current and prior year. Correct the data or enter a justification.

6120, Current AFR Rev Detail: \$0.00
 6120, Prior AFR Rev Detail: \$103.30

The district is no longer collecting per capita tax. The district eliminated the tax at the end of the 15-16 school year. There was a small amount collected in 16-17 and no money was collected in 17-18.

30560 Revenue Detail: Tax Revenue Data must be reported consistently for current and prior year. Correct the data or enter a justification.

6140, Current AFR Rev Detail: \$0.00
 6140, Prior AFR Rev Detail: \$103.30

The district is no longer collecting per capita tax. The district eliminated the tax at the end of the 15-16 school year. There was a small amount collected in 16-17 and no money was collected in 17-18.

30625 Revenue Detail: Current Tax Revenue amount cannot exceed 50% variance from prior year amount. Correct the data or enter a justification.

6120, Current AFR Rev Detail: \$0.00
 6120, Prior AFR Rev Detail: \$103.30

The district is no longer collecting per capita tax. The district eliminated the tax at the end of the 15-16 school year. There was a small amount collected in 16-17 and no money was collected in 17-18.

30635 Revenue Detail: Current Tax Revenue amount cannot exceed 50% variance from prior year amount. Correct the data or enter a justification.

6140, Current AFR Rev Detail: \$0.00
 6140, Prior AFR Rev Detail: \$103.30

The district is no longer collecting per capita tax. The district eliminated the tax at the end of the 15-16 school year. There was a small amount collected in 16-17 and no money was collected in 17-18.

41005 Expenditures have been reported in Function 1700 – Higher Education Programs for Secondary Students. Please confirm that these costs were for services provided to your school's secondary students. NOTE: Adult education programs and Community College sponsorship should be coded to Function 1600.

Exp detail, Fund 10, Function 1700 total \$12,500.00

These were expenditures paid to Harrisburg Area Community College for secondary students taking college level classes.

41162	<p>Expenditure Detail, Salaries (Object 100) and Benefits (Object 200 series): Amounts must be entered for both Salaries and Benefits.</p> <p>Please verify following fund and function codes: Fund 10 Function 2170; Fund 10 Function 2330; Fund 10 Function 2370;</p>	<p>The salary charges were coded to the 300 series instead of the 100 series as done in prior years.</p>
50160	<p>SOIN: All Governmental Fund General Obligation Bonds must include an amount for Interest Paid during Fiscal Year. Correct data or enter a justification.</p>	<p>No interest was paid during the fiscal year for GOB 2018, as it was issued in June of 2018. The first interest payment for this issue was due in fiscal year 2018-2019.</p>
50440	<p>SESS - 2260 Instruction and Curriculum Development Services: SESS Schedule amounts for Special Education vary from prior year by 40% or more. Correct the data or enter a justification.</p> <p style="padding-left: 40px;">SESS Schedule 2260: \$638,834.51 Prior Year SESS Schedule 2260: \$0.00</p>	<p>In 2017-2018, the district began allocating the Director of Special Education and two instructional advisors on the schedule appropriately as they mainly service special needs curriculum and instructional services for students.</p>
50450	<p>SESS - 2350 Legal and Accounting Services: SESS Schedule amounts for Special Education vary from prior year by 40% or more. Correct the data or enter a justification.</p> <p style="padding-left: 40px;">SESS Schedule 2350: \$6,115.40 Prior Year SESS Schedule 2350: \$0.00</p>	<p>In 2017-2018, the district procured the services of a specialized attorney to handle all matters relating to special education in addition to our general solicitor.</p>

Amounts Expressed in Whole Dollars	<u>General Fund</u> <u>(10)</u>	<u>Public Purpose Trust</u> <u>(27)</u>	<u>Other Compt Approved</u> <u>(28)</u>	<u>Athletic / Activity</u> <u>(29)</u>	<u>Capital Reserve (690.</u> <u>1850)</u> <u>(31)</u>
Assets And Deferred Outflows Of Resources					
Assets					
0100 Cash and Cash Equivalents	6,541,478				
0110 Investments	8,434,000				
0120 Taxes Receivable	1,718,010				
0130 Due From Other Funds	109,896				
0141 Due From Other Governments	258,867				
0142 State Revenue Receivable	3,958,308				
0143 Federal Revenue Receivable	394,057				
0145 Other Intergovernmental Revenue Receivable					
0146 Due from Primary Government					
0147 Due from Component Unit					
0150 Other Receivables	48,153				
0170 Inventories					
0180 Prepaid Expenses (Expenditures)	5,211,540				
0190 Other Current Assets					
Total Assets	\$26,674,309				
0910 Deferred Outflows of Resources					
Total Assets And Deferred Outflows Of Resources	\$26,674,309				

Amounts Expressed in Whole Dollars	<u>Capital Reserve (1431)</u> <u>(32)</u>	<u>Other Capital Projects</u> <u>Fund</u> <u>(39)</u>	<u>Debt Service</u> <u>(40)</u>	<u>Permanent</u> <u>(90)</u>	<u>Total Governmental</u> <u>Funds</u>
Assets And Deferred Outflows Of Resources					
Assets					
0100 Cash and Cash Equivalents	1,031,611	491			7,573,580
0110 Investments	7,754,000	32,126,000			48,314,000
0120 Taxes Receivable					1,718,010
0130 Due From Other Funds	3,615,027				3,724,923
0141 Due From Other Governments					258,867
0142 State Revenue Receivable					3,958,308
0143 Federal Revenue Receivable					394,057
0145 Other Intergovernmental Revenue Receivable					
0146 Due from Primary Government					
0147 Due from Component Unit					
0150 Other Receivables					48,153
0170 Inventories					
0180 Prepaid Expenses (Expenditures)					5,211,540
0190 Other Current Assets					
Total Assets	\$12,400,638	\$32,126,491			\$71,201,438
0910 Deferred Outflows of Resources					
Total Assets And Deferred Outflows Of Resources	\$12,400,638	\$32,126,491			\$71,201,438

Amounts Expressed in Whole Dollars

	<u>General Fund</u> <u>(10)</u>	<u>Public Purpose Trust</u> <u>(27)</u>	<u>Other Compt Approved</u> <u>(28)</u>	<u>Athletic / Activity</u> <u>(29)</u>	<u>Capital Reserve (690.</u> <u>1850)</u> <u>(31)</u>
Liabilities And Deferred Inflows Of Resources And Fund Balances					
Liabilities					
0400 Due to Other Funds					
0411 Due to Other Governments					
0412 Due to Primary Government					
0413 Due to Component Unit					
0420 Accounts Payable	491,341				
0430 Contracts Payable					
0440 Current Portion of Long-Term Debt					
0450 Short-Term Payables					
0461 Accrued Salaries and Benefits	3,673,608				
0462 Payroll Deductions and Withholding	2,279,395				
0480 Unearned Revenues					
0490 Other Current Liabilities					
Total Liabilities	\$6,444,344				
0950 Deferred Inflows of Resources		788,424			
Fund Balances					
0810 Nonspendable Fund Balance	5,211,540				
0820 Restricted Fund Balance					
0830 Committed Fund Balance	9,126,844				
0840 Assigned Fund Balance	1,013,844				
0850 Unassigned Fund Balance	4,089,313				
Total Fund Balances	\$19,441,541				
Total Liabilities, Deferred Inflows Of Resources And Fund Balances	\$26,674,309				

Amounts Expressed in Whole Dollars

	<u>Capital Reserve (1431)</u> <u>(32)</u>	<u>Other Capital Projects</u> <u>Fund</u> <u>(39)</u>	<u>Debt Service</u> <u>(40)</u>	<u>Permanent</u> <u>(90)</u>	<u>Total Governmental</u> <u>Funds</u>
Liabilities And Deferred Inflows Of Resources And Fund Balances					
Liabilities					
0400 Due to Other Funds		3,624,780			3,624,780
0411 Due to Other Governments					
0412 Due to Primary Government					
0413 Due to Component Unit					
0420 Accounts Payable	76,142				567,483
0430 Contracts Payable					
0440 Current Portion of Long-Term Debt					
0450 Short-Term Payables					
0461 Accrued Salaries and Benefits					3,673,608
0462 Payroll Deductions and Withholding					2,279,395
0480 Unearned Revenues					
0490 Other Current Liabilities					
Total Liabilities	\$76,142	\$3,624,780			\$10,145,266
0950 Deferred Inflows of Resources					788,424
Fund Balances					
0810 Nonspendable Fund Balance					5,211,540
0820 Restricted Fund Balance	12,324,496	28,501,711			40,826,207
0830 Committed Fund Balance					9,126,844
0840 Assigned Fund Balance					1,013,844
0850 Unassigned Fund Balance					4,089,313
Total Fund Balances	\$12,324,496	\$28,501,711			\$60,267,748
Total Liabilities, Deferred Inflows Of Resources And Fund Balances	\$12,400,638	\$32,126,491			\$71,201,438

Amounts Expressed in Whole Dollars	<u>General Fund</u> <u>(10)</u>	<u>Public Purpose Trust</u> <u>(27)</u>	<u>Other Compt Approved</u> <u>(28)</u>	<u>Athletic / Activity</u> <u>(29)</u>	<u>Capital Reserve (690.</u> <u>1850)</u> <u>(31)</u>
Revenues					
6000 Revenue from Local Sources	36,353,210				
7000 Revenue from State Sources	24,312,796				
8000 Revenue from Federal Sources	1,048,507				
Total Revenues	\$61,714,513				
Expenditures					
1000 Instruction	36,430,042				
2000 Support Services	17,053,748				
3000 Operation of Non-Instructional Services	1,027,102				
4000 Facilities Acquisition, Construction and Improvement Services					
5110 Debt Service	4,830,220				
5130 Refund of Prior Year Revenues / Receipts	702				
Total Expenditures	\$59,341,814				
Excess (Deficiency) Of Revenues Over Expenditures	\$2,372,699				
Other Financing Sources (Uses)					
9110 Face Value of Bonds Issued					
9120 Proceeds from Refunding of Bonds					
9130 Bond Premiums					
9200 Proceeds from Extended-Term Financing					
9300 Interfund Transfers - IN					
9400 Sale of or Compensation for Loss of Fixed Assets					
9710 Transfers from Component Units					
9720 Transfers from Primary Governments					
9910 Other Financing Sources Not Listed in the 9000 Series					
9990 Insurance Recoveries					
5120 Debt Service – Refunded Bonds					
5150 Bond Discounts					
5200 Interfund Transfers – Out	2,101,700				
5300 Transfers Out to Component Units/Primary Governments					
Total Other Financing Sources (Uses)	(\$2,101,700)				

Amounts Expressed in Whole Dollars	<u>Capital Reserve (1431)</u> <u>(32)</u>	<u>Other Capital Projects</u> <u>Fund</u> <u>(39)</u>	<u>Debt Service</u> <u>(40)</u>	<u>Permanent</u> <u>(90)</u>	<u>Total Governmental</u> <u>Funds</u>
Revenues					
6000 Revenue from Local Sources	95,728				36,448,938
7000 Revenue from State Sources					24,312,796
8000 Revenue from Federal Sources					1,048,507
Total Revenues	\$95,728				\$61,810,241
Expenditures					
1000 Instruction					36,430,042
2000 Support Services	61,027	445,208			17,559,983
3000 Operation of Non-Instructional Services					1,027,102
4000 Facilities Acquisition, Construction and Improvement Services	500	3,610,777			3,611,277
5110 Debt Service					4,830,220
5130 Refund of Prior Year Revenues / Receipts					702
Total Expenditures	\$61,527	\$4,055,985			\$63,459,326
Excess (Deficiency) Of Revenues Over Expenditures	\$34,201	(\$4,055,985)			(\$1,649,085)
Other Financing Sources (Uses)					
9110 Face Value of Bonds Issued			29,205,000		29,205,000
9120 Proceeds from Refunding of Bonds					
9130 Bond Premiums			3,352,697		3,352,697
9200 Proceeds from Extended-Term Financing					
9300 Interfund Transfers - IN	2,101,700				2,101,700
9400 Sale of or Compensation for Loss of Fixed Assets					
9710 Transfers from Component Units					
9720 Transfers from Primary Governments					
9910 Other Financing Sources Not Listed in the 9000 Series					
9990 Insurance Recoveries					
5120 Debt Service – Refunded Bonds					
5150 Bond Discounts					
5200 Interfund Transfers – Out					2,101,700
5300 Transfers Out to Component Units/Primary Governments					
Total Other Financing Sources (Uses)	\$2,101,700	\$32,557,697			\$32,557,697

Amounts Expressed in Whole Dollars	<u>General Fund</u> <u>(10)</u>	<u>Public Purpose Trust</u> <u>(27)</u>	<u>Other Compt Approved</u> <u>(28)</u>	<u>Athletic / Activity</u> <u>(29)</u>	<u>Capital Reserve</u> <u>(690.</u> <u>1850)</u> <u>(31)</u>
Special And Extraordinary Items					
9920 Special Items – Gains					
9930 Extraordinary Items – Gains					
5520 Special Items – Losses					
5530 Extraordinary Items – Losses					
Net Change In Fund Balances	\$270,999				
Fund Balance					
0001 Fund Balance - Beginning of Fiscal Year	19,170,543				
Fund Balance - End Of Year	\$19,441,542				

Amounts Expressed in Whole Dollars	<u>Capital Reserve (1431)</u> <u>(32)</u>	<u>Other Capital Projects</u> <u>Fund</u> <u>(39)</u>	<u>Debt Service</u> <u>(40)</u>	<u>Permanent</u> <u>(90)</u>	<u>Total Governmental</u> <u>Funds</u>
Special And Extraordinary Items					
9920 Special Items – Gains					
9930 Extraordinary Items – Gains					
5520 Special Items – Losses					
5530 Extraordinary Items – Losses					
Net Change In Fund Balances	\$2,135,901	\$28,501,712			\$30,908,612
Fund Balance					
0001 Fund Balance - Beginning of Fiscal Year	10,188,595				29,359,138
Fund Balance - End Of Year	\$12,324,496	\$28,501,712			\$60,267,750

Amounts Expressed in Whole Dollars	<u>Food Service</u> <u>(51)</u>	<u>Child Care</u> <u>Operations</u> <u>(52)</u>	<u>Other Enterprise</u> <u>(58)</u>	<u>TOTAL</u>	<u>Internal Service</u> <u>(60)</u>
Assets And Deferred Outflows Of Resources					
Current Assets					
0100 Cash and Cash Equivalents	380,348			380,348	
0110 Investments					
0130 Due From Other Funds					
0141 Due From Other Governments					
0142 State Revenue Receivable	6,253			6,253	
0143 Federal Revenue Receivable	100,682			100,682	
0146 Due from Primary Government					
0147 Due from Component Unit					
0150 Other Receivables	17,355			17,355	
0170 Inventories	9,307			9,307	
0180 Prepaid Expenses (Expenditures)					
0190 Other Current Assets					
Total Current Assets	\$513,945			\$513,945	
Noncurrent Assets					
0211 Land					
0212 Site Improvements (Net)					
0220 Buildings and Building Improvements (Net)					
0230 Machinery, Equipment and Furniture (Net)	83,912			83,912	
0250 Construction in Progress					
0260 Long Term Prepayments					
0290 Other Noncurrent Assets					
Total Noncurrent Assets	\$83,912			\$83,912	
0910 Deferred Outflows of Resources	333,403			333,403	
Total Assets And Deferred Outflows Of Resources	\$931,260			\$931,260	

Amounts Expressed in Whole Dollars	<u>Food Service</u> (51)	<u>Child Care</u> <u>Operations</u> (52)	<u>Other Enterprise</u> (58)	<u>TOTAL</u>	<u>Internal Service</u> (60)
Liabilities And Deferred Inflows Of Resources And Net Position					
Current Liabilities					
0400 Due to Other Funds	100,118			100,118	
0411 Due to Other Governments					
0413 Due to Component Unit					
0420 Accounts Payable	29			29	
0430 Contracts Payable					
0440 Current Portion of Long-Term Debt					
0450 Short-Term Payables					
0461 Accrued Salaries and Benefits	7,762			7,762	
0462 Payroll Deductions and Withholding	129			129	
0480 Unearned Revenues	35,297			35,297	
0490 Other Current Liabilities					
Total Current Liabilities	\$143,335			\$143,335	
Noncurrent Liabilities					
0510 Bonds Payable					
0520 Extended-Term Financing Agreements Payable					
0530 Lease-Purchase Obligations					
0540 Accumulated Compensated Absences	19,950			19,950	
0550 Authority Lease Obligations					
0560 Other Post-Employment Benefits (OPEB)	95,900			95,900	
0570 Net Pension Liability	1,740,000			1,740,000	
0599 Other Noncurrent Liabilities					
Total Noncurrent Liabilities	\$1,855,850			\$1,855,850	
Total Liabilities	\$1,999,185			\$1,999,185	
0950 Deferred Inflows of Resources	30,000			30,000	
Net Position					
0791 Net Investment in Capital Assets	83,912			83,912	
0008 Restricted Net Position (0792 – 0798)					
0799 Unrestricted Net Position	(1,181,837)			(1,181,837)	
Total Net Position	(\$1,097,925)			(\$1,097,925)	
Total Liabilities And Deferred Inflows Of Resources And Net Position	\$931,260			\$931,260	

Amounts Expressed in Whole Dollars	<u>Food Service</u> <u>(51)</u>	<u>Child Care Operations</u> <u>(52)</u>	<u>Other Enterprise</u> <u>(58)</u>	<u>TOTAL</u>	<u>Internal Service</u> <u>(60)</u>
Operating Revenues					
6600 Food Service Revenue	627,335			627,335	
0071 Charges for Services					
0072 Other Operating Revenue					
Total Operating Revenues	\$627,335			\$627,335	
Operating Expenses					
100 Personnel Services – Salaries	521,320			521,320	
200 Personnel Services – Employee Benefits	410,000			410,000	
300 Purchased Professional and Technical Services	808			808	
400 Purchased Property Services	3,385			3,385	
500 Other Purchased Services					
600 Supplies	666,336			666,336	
740 Depreciation	9,885			9,885	
810 Dues and Fees					
890 Miscellaneous Expenditures	10,179			10,179	
Total Operating Expenses	\$1,621,913			\$1,621,913	
Operating Income (Loss)	(\$994,578)			(\$994,578)	
Non Operating Revenues (Expenses)					
6500 Earnings on Investments	5,687			5,687	
6920 Contributions and Donations from Private Sources					
6930 Gains or Losses on Sale of Fixed Assets					
6991 Refunds of a Prior Year Expenditure					
7000 Revenue from State Sources	156,372			156,372	
8000 Revenue from Federal Sources	875,248			875,248	
820 Claims and Judgments Against the LEA					
830 Interest					
TOTAL Non Operating Revenues (Expenses)	\$1,037,307			\$1,037,307	
Income (Loss) Before Contributions And Transfers	\$42,729			\$42,729	

Amounts Expressed in Whole Dollars	<u>Food Service</u> <u>(51)</u>	<u>Child Care Operations</u> <u>(52)</u>	<u>Other Enterprise</u> <u>(58)</u>	<u>TOTAL</u>	<u>Internal Service</u> <u>(60)</u>
Contributions, Transfers, and Special and Extraordinary Items					
5200 Interfund Transfers – Out					
5300 Transfers Out to Component Units/Primary Governments					
5520 Special Items – Losses					
5530 Extraordinary Items – Losses					
9300 Interfund Transfers - IN					
9500 Capital Contributions					
9700 Transfers IN From Component Units/Primary Governments					
9920 Special Items – Gains					
9930 Extraordinary Items – Gains					
Change In Net Position	\$42,729			\$42,729	
0002 Net Position - Beginning of Fiscal Year	(1,140,654)			(1,140,654)	
0003 Accounting Changes / Residual Equity Transfers					
Net Position - End Of Year	(\$1,097,925)			(\$1,097,925)	

LEA : 112671803 Dover Area SD

Printed 11/30/2018 8:05:17 AM

Amounts Expressed in Whole Dollars	<u>Food Service</u> <u>(51)</u>	<u>Child Care Operations</u> <u>(52)</u>	<u>Other Enterprise</u> <u>(58)</u>	<u>TOTAL</u>	<u>Internal Service(60)</u>
Cash Flows From Operating Activities					
0011 Cash Receipts From Users	627,438			627,438	
0012 Cash Receipts From Assessments Made to Other Funds					
0013 Cash Receipts From Earnings on Investments					
0014 Cash Receipts From Other Operating Revenue					
0015 Cash Payments To Employees For Services	807,413			807,413	
0016 Cash Payments For Insurance Claims					
0017 Cash Payments To Suppliers For Goods and Services	654,449			654,449	
0018 Cash Payments For Other Operating Expenses	10,179			10,179	
Net Cash Provided By (Used For) Operating Activities	(\$844,603)			(\$844,603)	
Cash Flows From Non-Capital Financing Activities					
0021 Receipts From Local Sources - 6000					
0022 Receipts From State Sources - 7000	150,119			150,119	
0023 Receipts From Federal Sources -8000	687,613			687,613	
0024 Notes and Loans Received (Repaid)					
0025 Interest Paid on Notes/Loans - 5100-830					
0026 Operating Transfers In (Out)/Residual Equity Trans					
0027 Operating Transfers In (Out) Primary Government / Comp Unit					
0028 Receipts From Refund of Prior Year Expenditures - 6991					
0029 Special and Extraordinary Gains (losses)					
0030 Receipts from Insurance Recoveries -9990					
Net Cash Prov By (Used for) Non-Capital Financing Activities	\$837,732			\$837,732	
Cash Flows From Capital and Related Financing Activities					
0031 Payments For Fac Acq, Const, and Imp - 4000					
0032 Gain / (Loss) on Sale of Fixed Assets - 6930					
0033 Proceeds From Extended Term Financing - 9200					
0034 Principal Paid on Financing Agreements					
0035 Interest Paid on Financing Agreements - 5100-830					
0036 (Inc) Dec in Contributed Capital					
Net Cash Prov By (Used for) Capital and Related Financing Activities					
Cash Flows From Investing Activities					
0041 Earnings on Investments - 6500	5,687			5,687	
0042 Purchase of Inv Securities / Deposits to Inv Pools					
0043 Receipts From Investment Pool Withdrawals					
0044 Proceeds from Sale and Maturity of Inv Securities					

LEA : 112671803 Dover Area SD

Printed 11/30/2018 8:05:17 AM

0045 Loans Received (Paid)

Net Cash Prov By (Used for) Investing Activities	\$5,687	\$5,687
---	----------------	----------------

	<u>Food Service</u> <u>(51)</u>	<u>Child Care Operations</u> <u>(52)</u>	<u>Other Enterprise</u> <u>(58)</u>	<u>TOTAL</u>	<u>Internal Service</u> <u>(60)</u>
Net Increase (Decrease) in Cash Flows	(1,184)			(1,184)	
0004 Cash and Cash Equivalents Beginning of Year	381,532			381,532	
Cash and Cash Equivalents at Year End	\$380,348			\$380,348	
<hr/>					
Reconciliation of Operating Income (Loss) To Net Cash Provided by (Used For) Operating Activities					
0005 Operating Income (Loss) per REP	(994,578)			(994,578)	
Adjustments					
0051 Depreciation and Net Amortization	9,885			9,885	
0052 Provision for Uncollectible Accounts					
0053 Other Adjustments	86,953			86,953	
Effect of Changes in Assets, Liabilities, Deferred Outflows and Deferred Inflows					
0054 (Inc) Dec In Accounts Receivable (0120-0150)	(8,066)			(8,066)	
0055 Advances to Other Funds (0160)					
0056 (Inc) Dec in Inventories (0170)	(5,033)			(5,033)	
0057 (Inc) Dec in Prepaid Expenses (0180)					
0058 (Inc) Dec in Other Current or Noncurrent Assets					
0064 Deferred Outflows (0910)	56,440			56,440	
0059 Inc (Dec) in Accounts Payable (0400-0450)	(65,840)			(65,840)	
0060 Inc (Dec) in Accrued Salaries/Benefits (0461)	7,163			7,163	
0065 Inc (Dec) in Net Pension Liabilities (0570)	(29,000)			(29,000)	
0066 Inc (Dec) in Other Postemp Benefit Oblig (0560)	(25,749)			(25,749)	
0061 Inc (Dec) in Payroll Deductions/Withholding (0462)					
0062 Inc (Dec) in Unearned Revenue (0480)	8,169			8,169	
0063 Inc (Dec) in Other Current or Noncurrent Liabilities	99,053			99,053	
0067 Deferred Inflows (0950)	16,000			16,000	
Total Adjustments	\$149,975			\$149,975	
Cash Provided By (Used for) Total	(\$844,603)			(\$844,603)	

COMBINED STATEMENT OF CASH FLOWS
SCHEDULE OF NONCASH INVESTING, CAPITAL, AND FINANCING ACTIVITIES

Explanation of Transaction and Balance Sheet Effect	Amount
Total	

LEA : 112671803 Dover Area SD

Printed 11/30/2018 8:05:18 AM

Amounts Expressed in Whole Dollars

Private Purpose Trust
(71)

Investment Trust
(72)

Pension Trust
(73)

Activity
(81)

Assets And Deferred Outflows Of Resources

Assets

0100 Cash and Cash Equivalents				94,635
0110 Investments				
0130 Due From Other Funds				
0147 Due from Component Unit				
0150 Other Receivables				
0170 Inventories				
0180 Prepaid Expenses (Expenditures)				
0190 Other Current Assets				
0220 Buildings and Building Improvements (Net)				
0230 Machinery, Equipment and Furniture (Net)				

Total Assets				\$94,635
---------------------	--	--	--	-----------------

0910 Deferred Outflows of Resources

Total Assets And Deferred Outflows Of Resources				\$94,635
--	--	--	--	-----------------

LEA : 112671803 Dover Area SD

Printed 11/30/2018 8:05:18 AM

Amounts Expressed in Whole Dollars

	<u>Other Agency</u> <u>(89)</u>	<u>Discrete Component Units</u> <u>(98)</u>	<u>Discrete Component Units</u> <u>(99)</u>	<u>Total Fiduciary Funds</u>
Assets And Deferred Outflows Of Resources				
Assets				
0100 Cash and Cash Equivalents				94,635
0110 Investments				
0130 Due From Other Funds				
0147 Due from Component Unit				
0150 Other Receivables				
0170 Inventories				
0180 Prepaid Expenses (Expenditures)				
0190 Other Current Assets				
0220 Buildings and Building Improvements (Net)				
0230 Machinery, Equipment and Furniture (Net)				
Total Assets				\$94,635
0910 Deferred Outflows of Resources				
Total Assets And Deferred Outflows Of Resources				\$94,635

LEA : 112671803 Dover Area SD

Printed 11/30/2018 8:05:18 AM

Amounts Expressed in Whole Dollars	<u>Private Purpose Trust</u> (71)	<u>Investment Trust</u> (72)	<u>Pension Trust</u> (73)	<u>Activity</u> (81)
Liabilities, Deferred Inflows Of Resources And Net Position				
Liabilities				
0400 Due to Other Funds				25
0411 Due to Other Governments				
0412 Due to Primary Government				
0413 Due to Component Unit				
0420 Accounts Payable				
0430 Contracts Payable				
0450 Short-Term Payables				
0461 Accrued Salaries and Benefits				
0462 Payroll Deductions and Withholding				
0480 Unearned Revenues				
0490 Other Current Liabilities				94,610
Total Liabilities				\$94,635
Net Position				
0791 Net Investment in Capital Assets				
0009 Restricted Net Position (0792 – 0798)				
0799 Unrestricted Net Position				
Total Net Position				\$94,635
Total Liabilities, Deferred Inflows Of Resources And Net Position				\$94,635

LEA : 112671803 Dover Area SD

Printed 11/30/2018 8:05:18 AM

Amounts Expressed in Whole Dollars	<u>Other Agency</u> (89)	<u>Discrete Component Units</u> (98)	<u>Discrete Component Units</u> (99)	<u>Total Fiduciary Funds</u>
Liabilities, Deferred Inflows Of Resources And Net Position				
Liabilities				
0400 Due to Other Funds				25
0411 Due to Other Governments				
0412 Due to Primary Government				
0413 Due to Component Unit				
0420 Accounts Payable				
0430 Contracts Payable				
0450 Short-Term Payables				
0461 Accrued Salaries and Benefits				
0462 Payroll Deductions and Withholding				
0480 Unearned Revenues				
0490 Other Current Liabilities				94,610
Total Liabilities				\$94,635
Net Position				
0791 Net Investment in Capital Assets				
0009 Restricted Net Position (0792 – 0798)				
0799 Unrestricted Net Position				
Total Net Position				
Total Liabilities, Deferred Inflows Of Resources And Net Position				\$94,635

	<u>Revenue Reported In Current Year</u>	<u>Current Year Tax Accrual</u>	<u>Prior Year Tax Accrual</u>	<u>Taxes Collected In Current Year</u>
<u>Revenue from Local Sources</u>				
6111 Current Real Estate Taxes	27,556,814.34			27,556,814.34
6112 Interim Real Estate Taxes	178,384.68			178,384.68
6113 Public Utility Realty Taxes	34,868.08			34,868.08
6114 Payments in Lieu of Current Taxes - State / Local	231.84			231.84
6151 Current Act 511 Earned Income Taxes	5,214,483.46			5,214,483.46
6153 Current Act 511 Real Estate Transfer Taxes	536,134.74			536,134.74
6411 Delinquent Real Estate Taxes	1,097,912.83			1,097,912.83
6420 Delinquent Per Capita Taxes, Section 679	12,176.18			12,176.18
6451 Delinquent Act 511 Earned Income Taxes	176,605.45			176,605.45
6500 Earnings on Investments	518,689.26			
6700 Revenues from LEA Activities	175,803.95			
6831 Federal Revenue Received from Other Pennsylvania Public LEAs	53,113.94			
6832 Federal IDEA Revenue Received as Pass Through	635,938.64			
6910 Rentals	16,414.88			
6920 Contributions and Donations from Private Sources	15,284.36			
6941 Regular Day School Tuition	15,854.56			
6942 Summer School Tuition	2,674.00			
6944 Receipts from Other LEAs in Pennsylvania - Education	53,142.09			
6961 Transportation Services Provided Other Pennsylvania LEAs	21,847.38			
6991 Refunds of a Prior Year Expenditure	9,219.05			
6999 Other Revenues Not Specified Above	27,615.86			
TOTAL Revenue from Local Sources	\$36,353,209.57			\$34,807,611.60

**Revenue Reported
In Current Year**

Revenue from State Sources

7110 Basic Education Funding	11,496,673.06		
7160 Tuition for Orphans Subsidy	46,679.73		
7220 Vocational Education	93,423.28		
7271 Special Education funds for School-Aged Pupils	2,055,523.35		
7299 Program Revenues Not Listed Previously in the 7200 Series	108.90		
7311 Pupil Transportation Subsidy	1,361,869.78		
7312 Nonpublic and Charter School Pupil Transportation Subsidy	50,820.00		
7320 Rental and Sinking Fund Payments / Building Reimbursement Subsidy	1,235,406.80		
7330 Health Services (Medical, Dental, Nurse, Act 25)	65,556.53		
7340 State Property Tax Reduction Allocation	1,275,873.60		
7505 Ready to Learn Block Grant	560,822.00		
7509 Supplemental Equipment Grants	7,667.12		
7810 State Share of Social Security and Medicare Taxes	1,365,936.36		
7820 State Share of Retirement Contributions	4,696,435.70		
TOTAL Revenue from State Sources	\$24,312,796.21		

**Revenue Reported
In Current Year**

Revenue from Federal Sources

8514 NCLB, Title I - Improving the Academic Achievement of the Disadvantaged	620,281.00		
8515 NCLB, Title II - Preparing, Training and Recruiting High Quality Teachers and Principals	153,487.00		
8517 NCLB, Title IV - 21St Century Schools	13,209.00		
8810 School-Based Access Medicaid Reimbursement Program (SBAP) Reimbursements (Access)	246,199.70		
8820 Medical Assistance Reimbursement for Administrative Claiming (Quarterly) Program	15,329.81		
TOTAL Revenue from Federal Sources	\$1,048,506.51		
TOTAL FROM ALL SOURCES	\$61,714,512.29		\$34,807,611.60

Revenue from Local Sources	36,353,209.57
Revenue from State Sources	24,312,796.21
Revenue from Federal Sources	1,048,506.51
Other Financing Sources	
TOTAL FROM ALL SOURCES	\$61,714,512.29

General Fund (10)

	<u>Total</u>
1000 Instruction	
100 Personnel Services – Salaries	
100 Personnel Services – Salaries	18,855,469.78
Total Personnel Services – Salaries	\$18,855,469.78
200 Personnel Services – Employee Benefits	
210 Group Insurance – Contracted Provider	14,528.32
220 Social Security Contributions	1,392,640.72
230 PSERS Retirement Contributions	6,138,200.26
250 Unemployment Compensation	2,058.78
260 Workers' Compensation	73,685.27
270 Group Insurance – Self-Insurance	2,429,918.52
291 Other Retirement Plans	1,700.00
Total Personnel Services – Employee Benefits	\$10,052,731.87
300 Purchased Professional and Technical Services	
322 Professional Educational Services – Ius	3,210,214.68
323 Professional Educational Services – Other Educational Agencies	488,456.00
330 Other Professional Services	40,704.44
Total Purchased Professional and Technical Services	\$3,739,375.12
400 Purchased Property Services	
430 Repairs and Maintenance Services	4,064.46
Total Purchased Property Services	\$4,064.46
500 Other Purchased Services	
550 Printing and Binding	279.00
561 Tuition To Other School Districts Within the State	662,628.49
562 Tuition To Pennsylvania Charter Schools	1,298,808.31
564 Tuition To Career and Technology Centers	1,047,398.42
566 Tuition To Institutions of Higher Education and Technical Institutes	12,500.00
568 Tuition To Private Residential Rehabilitative Institutions (PRRI) [In-State] and Detention Centers	116,445.10
580 Travel	8,100.96
594 IU Payment By Withholding for Institutionalized Children's Programs – Special Classes	368.39
Total Other Purchased Services	\$3,146,528.67
600 Supplies	
610 General Supplies	300,324.36
630 Food	2,493.07
640 Books and Periodicals	261,129.93
650 Supplies & Fees – Technology Related	1,349.98
Total Supplies	\$565,297.34
700 Property	
752 Capital Equipment – Original and Additional	47,268.31
762 Capitalized Equipment - Replacement	4,000.00
Total Property	\$51,268.31
800 Other Objects	
810 Dues and Fees	10,556.25

LEA : 112671803 Dover Area SD

Printed 11/30/2018 8:05:21 AM

General Fund (10)

1000 Instruction	<u>Total</u>
800 <u>Other Objects</u>	
890 Miscellaneous Expenditures	4,750.00
Total Other Objects	\$15,306.25
Total 1000 Instruction	\$36,430,041.80

General Fund (10)

1100 Regular Programs – Elementary / Secondary	<u>Elementary</u>	<u>Secondary</u>	<u>Federal</u>	<u>Total</u>
100 Personnel Services – Salaries				
100 Personnel Services – Salaries	7,528,938.29	5,852,866.70	983,350.66	14,365,155.65
Total Personnel Services – Salaries	\$7,528,938.29	\$5,852,866.70	\$983,350.66	\$14,365,155.65
200 Personnel Services – Employee Benefits				
210 Group Insurance – Contracted Provider	6,229.68	4,486.86	132.39	10,848.93
220 Social Security Contributions	598,563.49	435,337.51	27,796.45	1,061,697.45
230 PSERS Retirement Contributions	2,725,269.66	1,915,497.72	50,582.01	4,691,349.39
250 Unemployment Compensation	1,456.53	157.74		1,614.27
260 Workers' Compensation	29,341.00	20,091.13	2,640.69	52,072.82
270 Group Insurance – Self-Insurance	979,112.72	391,222.46	83,704.74	1,454,039.92
291 Other Retirement Plans	850.00	850.00		1,700.00
Total Personnel Services – Employee Benefits	\$4,340,823.08	\$2,767,643.42	\$164,856.28	\$7,273,322.78
300 Purchased Professional and Technical Services				
323 Professional Educational Services – Other Educational Agencies		419,825.00		419,825.00
330 Other Professional Services	11,241.79	129.99		11,371.78
Total Purchased Professional and Technical Services	\$11,241.79	\$419,954.99		\$431,196.78
400 Purchased Property Services				
430 Repairs and Maintenance Services	465.00	2,531.29		2,996.29
Total Purchased Property Services	\$465.00	\$2,531.29		\$2,996.29
500 Other Purchased Services				
550 Printing and Binding		279.00		279.00
561 Tuition To Other School Districts Within the State	345,804.96	141,454.64		487,259.60
562 Tuition To Pennsylvania Charter Schools	364,558.56	526,673.45		891,232.01
568 Tuition To Private Residential Rehabilitative Institutions (PRRI) [In-State] and Detention Centers	10,623.13	18,227.93		28,851.06
580 Travel	655.49	132.57		788.06
Total Other Purchased Services	\$721,642.14	\$686,767.59		\$1,408,409.73
600 Supplies				
610 General Supplies	87,518.56	108,819.68	330.00	196,668.24
640 Books and Periodicals	92,755.98	116,521.09	41,621.28	250,898.35
650 Supplies & Fees – Technology Related		1,349.98		1,349.98
Total Supplies	\$180,274.54	\$226,690.75	\$41,951.28	\$448,916.57
700 Property				
762 Capitalized Equipment - Replacement		4,000.00		4,000.00
Total Property		\$4,000.00		\$4,000.00
Total 1100 Regular Programs – Elementary / Secondary	\$12,783,384.84	\$9,960,454.74	\$1,190,158.22	\$23,933,997.80

General Fund (10)

	<u>Elementary</u>	<u>Secondary</u>	<u>Federal</u>	<u>Total</u>
1110 Regular Programs				
100 Personnel Services – Salaries				
100 Personnel Services – Salaries	7,528,938.29	5,852,866.70	983,350.66	14,365,155.65
Total Personnel Services – Salaries	\$7,528,938.29	\$5,852,866.70	\$983,350.66	\$14,365,155.65
200 Personnel Services – Employee Benefits				
210 Group Insurance – Contracted Provider	6,229.68	4,486.86	132.39	10,848.93
220 Social Security Contributions	598,563.49	435,337.51	27,796.45	1,061,697.45
230 PSERS Retirement Contributions	2,725,269.66	1,915,497.72	50,582.01	4,691,349.39
250 Unemployment Compensation	1,456.53	157.74		1,614.27
260 Workers' Compensation	29,341.00	20,091.13	2,640.69	52,072.82
270 Group Insurance – Self-Insurance	979,112.72	391,222.46	83,704.74	1,454,039.92
291 Other Retirement Plans	850.00	850.00		1,700.00
Total Personnel Services – Employee Benefits	\$4,340,823.08	\$2,767,643.42	\$164,856.28	\$7,273,322.78
300 Purchased Professional and Technical Services				
323 Professional Educational Services – Other Educational Agencies		419,825.00		419,825.00
330 Other Professional Services	11,241.79	129.99		11,371.78
Total Purchased Professional and Technical Services	\$11,241.79	\$419,954.99		\$431,196.78
400 Purchased Property Services				
430 Repairs and Maintenance Services	465.00	2,531.29		2,996.29
Total Purchased Property Services	\$465.00	\$2,531.29		\$2,996.29
500 Other Purchased Services				
550 Printing and Binding		279.00		279.00
561 Tuition To Other School Districts Within the State	345,804.96	141,454.64		487,259.60
562 Tuition To Pennsylvania Charter Schools	364,558.56	526,673.45		891,232.01
568 Tuition To Private Residential Rehabilitative Institutions (PRRI) [In-State] and Detention Centers	10,623.13	18,227.93		28,851.06
580 Travel	655.49	132.57		788.06
Total Other Purchased Services	\$721,642.14	\$686,767.59		\$1,408,409.73
600 Supplies				
610 General Supplies	87,518.56	108,819.68	330.00	196,668.24
640 Books and Periodicals	92,755.98	116,521.09	41,621.28	250,898.35
650 Supplies & Fees – Technology Related		1,349.98		1,349.98
Total Supplies	\$180,274.54	\$226,690.75	\$41,951.28	\$448,916.57
700 Property				
762 Capitalized Equipment - Replacement		4,000.00		4,000.00
Total Property		\$4,000.00		\$4,000.00
Total 1110 Regular Programs	\$12,783,384.84	\$9,960,454.74	\$1,190,158.22	\$23,933,997.80

General Fund (10)

1200 Special Programs – Elementary / Secondary	<u>Elementary</u>	<u>Secondary</u>	<u>Federal</u>	<u>Total</u>
100 Personnel Services – Salaries				
100 Personnel Services – Salaries	1,795,776.84	1,308,362.96		3,104,139.80
Total Personnel Services – Salaries	\$1,795,776.84	\$1,308,362.96		\$3,104,139.80
200 Personnel Services – Employee Benefits				
210 Group Insurance – Contracted Provider	1,193.29	1,253.10		2,446.39
220 Social Security Contributions	132,545.24	95,680.65		228,225.89
230 PSERS Retirement Contributions	575,935.47	421,961.98		997,897.45
250 Unemployment Compensation	444.51			444.51
260 Workers' Compensation	7,440.29	6,335.39		13,775.68
270 Group Insurance – Self-Insurance	345,517.66	342,205.00		687,722.66
Total Personnel Services – Employee Benefits	\$1,063,076.46	\$867,436.12		\$1,930,512.58
300 Purchased Professional and Technical Services				
322 Professional Educational Services – Ius	1,248,458.24	1,432,535.66	529,220.78	3,210,214.68
323 Professional Educational Services – Other Educational Agencies	34,315.50	34,315.50		68,631.00
330 Other Professional Services	4,532.94	17,329.72		21,862.66
Total Purchased Professional and Technical Services	\$1,287,306.68	\$1,484,180.88	\$529,220.78	\$3,300,708.34
500 Other Purchased Services				
561 Tuition To Other School Districts Within the State		118,163.52		118,163.52
562 Tuition To Pennsylvania Charter Schools	222,854.71	184,721.59		407,576.30
568 Tuition To Private Residential Rehabilitative Institutions (PRRI) [In-State] and Detention Centers	3,373.60	49,622.88		52,996.48
580 Travel	45.81			45.81
594 IU Payment By Withholding for Institutionalized Children's Programs – Special Classes	184.19	184.20		368.39
Total Other Purchased Services	\$226,458.31	\$352,692.19		\$579,150.50
600 Supplies				
610 General Supplies	8,246.16	3,762.70		12,008.86
640 Books and Periodicals	3,781.33	4,517.56		8,298.89
Total Supplies	\$12,027.49	\$8,280.26		\$20,307.75
Total 1200 Special Programs – Elementary / Secondary	\$4,384,645.78	\$4,020,952.41	\$529,220.78	\$8,934,818.97

General Fund (10)

1210 Life Skills Support

	<u>Elementary</u>	<u>Secondary</u>	<u>Federal</u>	<u>Total</u>
100 Personnel Services – Salaries				
100 Personnel Services – Salaries	185,842.99	166,943.81		352,786.80
Total Personnel Services – Salaries	\$185,842.99	\$166,943.81		\$352,786.80
200 Personnel Services – Employee Benefits				
210 Group Insurance – Contracted Provider	75.66	88.26		163.92
220 Social Security Contributions	13,638.96	12,485.69		26,124.65
230 PSERS Retirement Contributions	60,529.01	51,767.85		112,296.86
260 Workers' Compensation	1,183.96	1,063.58		2,247.54
270 Group Insurance – Self-Insurance	65,146.52	39,593.43		104,739.95
Total Personnel Services – Employee Benefits	\$140,574.11	\$104,998.81		\$245,572.92
300 Purchased Professional and Technical Services				
322 Professional Educational Services – lus	50,849.40	196,634.64		247,484.04
330 Other Professional Services		2,519.72		2,519.72
Total Purchased Professional and Technical Services	\$50,849.40	\$199,154.36		\$250,003.76
600 Supplies				
610 General Supplies	2,553.03	1,930.85		4,483.88
640 Books and Periodicals	1,247.08	1,259.38		2,506.46
Total Supplies	\$3,800.11	\$3,190.23		\$6,990.34
Total 1210 Life Skills Support	\$381,066.61	\$474,287.21		\$855,353.82

General Fund (10)

1220 Sensory Support

300 Purchased Professional and Technical Services

	<u>Elementary</u>	<u>Secondary</u>	<u>Federal</u>	<u>Total</u>
322 Professional Educational Services – lus	309,317.79	72,504.39	150,000.00	531,822.18
Total Purchased Professional and Technical Services	\$309,317.79	\$72,504.39	\$150,000.00	\$531,822.18

600 Supplies

610 General Supplies	2,770.98	853.50		3,624.48
Total Supplies	\$2,770.98	\$853.50		\$3,624.48
Total 1220 Sensory Support	\$312,088.77	\$73,357.89	\$150,000.00	\$535,446.66

General Fund (10)

	<u>Elementary</u>	<u>Secondary</u>	<u>Federal</u>	<u>Total</u>
1230 Emotional Support				
100 Personnel Services – Salaries				
100 Personnel Services – Salaries	194,066.02			194,066.02
Total Personnel Services – Salaries	\$194,066.02			\$194,066.02
200 Personnel Services – Employee Benefits				
210 Group Insurance – Contracted Provider	104.04			104.04
220 Social Security Contributions	14,487.67			14,487.67
230 PSERS Retirement Contributions	63,207.39			63,207.39
260 Workers' Compensation	1,236.06			1,236.06
270 Group Insurance – Self-Insurance	35,682.06			35,682.06
Total Personnel Services – Employee Benefits	\$114,717.22			\$114,717.22
300 Purchased Professional and Technical Services				
322 Professional Educational Services – lus	542,200.95	797,680.53	372,035.78	1,711,917.26
330 Other Professional Services	4,532.94			4,532.94
Total Purchased Professional and Technical Services	\$546,733.89	\$797,680.53	\$372,035.78	\$1,716,450.20
600 Supplies				
610 General Supplies	1,514.02	332.52		1,846.54
Total Supplies	\$1,514.02	\$332.52		\$1,846.54
Total 1230 Emotional Support	\$857,031.15	\$798,013.05	\$372,035.78	\$2,027,079.98

General Fund (10)

1240 Academic Support

	<u>Elementary</u>	<u>Secondary</u>	<u>Federal</u>	<u>Total</u>
100 Personnel Services – Salaries				
100 Personnel Services – Salaries	1,415,867.83	1,141,419.15		2,557,286.98
Total Personnel Services – Salaries	\$1,415,867.83	\$1,141,419.15		\$2,557,286.98
200 Personnel Services – Employee Benefits				
210 Group Insurance – Contracted Provider	1,013.59	1,164.84		2,178.43
220 Social Security Contributions	104,418.61	83,194.96		187,613.57
230 PSERS Retirement Contributions	452,199.07	370,194.13		822,393.20
250 Unemployment Compensation	444.51			444.51
260 Workers' Compensation	5,020.27	5,271.81		10,292.08
270 Group Insurance – Self-Insurance	244,689.08	302,611.57		547,300.65
Total Personnel Services – Employee Benefits	\$807,785.13	\$762,437.31		\$1,570,222.44
300 Purchased Professional and Technical Services				
330 Other Professional Services		2,930.00		2,930.00
Total Purchased Professional and Technical Services		\$2,930.00		\$2,930.00
500 Other Purchased Services				
561 Tuition To Other School Districts Within the State		118,163.52		118,163.52
580 Travel	45.81			45.81
Total Other Purchased Services	\$45.81	\$118,163.52		\$118,209.33
600 Supplies				
610 General Supplies	1,408.13	645.83		2,053.96
640 Books and Periodicals	2,534.25	3,258.18		5,792.43
Total Supplies	\$3,942.38	\$3,904.01		\$7,846.39
Total 1240 Academic Support	\$2,227,641.15	\$2,028,853.99		\$4,256,495.14

General Fund (10)

	<u>Elementary</u>	<u>Secondary</u>	<u>Federal</u>	<u>Total</u>
1241 Learning Support – Public				
100 Personnel Services – Salaries				
100 Personnel Services – Salaries	1,318,507.98	1,012,904.60		2,331,412.58
Total Personnel Services – Salaries	\$1,318,507.98	\$1,012,904.60		\$2,331,412.58
200 Personnel Services – Employee Benefits				
210 Group Insurance – Contracted Provider	982.86	1,115.16		2,098.02
220 Social Security Contributions	97,074.57	73,642.53		170,717.10
230 PSERS Retirement Contributions	420,489.11	328,336.78		748,825.89
250 Unemployment Compensation	444.51			444.51
260 Workers' Compensation	4,400.25	4,453.13		8,853.38
270 Group Insurance – Self-Insurance	226,461.75	271,825.53		498,287.28
Total Personnel Services – Employee Benefits	\$749,853.05	\$679,373.13		\$1,429,226.18
300 Purchased Professional and Technical Services				
330 Other Professional Services		2,930.00		2,930.00
Total Purchased Professional and Technical Services		\$2,930.00		\$2,930.00
500 Other Purchased Services				
561 Tuition To Other School Districts Within the State		118,163.52		118,163.52
Total Other Purchased Services		\$118,163.52		\$118,163.52
600 Supplies				
610 General Supplies	1,009.39	292.30		1,301.69
640 Books and Periodicals	2,258.37	2,798.61		5,056.98
Total Supplies	\$3,267.76	\$3,090.91		\$6,358.67
Total 1241 Learning Support – Public	\$2,071,628.79	\$1,816,462.16		\$3,888,090.95

General Fund (10)

1243 Gifted Support

	<u>Elementary</u>	<u>Secondary</u>	<u>Federal</u>	<u>Total</u>
100 Personnel Services – Salaries				
100 Personnel Services – Salaries	97,359.85	128,514.55		225,874.40
Total Personnel Services – Salaries	\$97,359.85	\$128,514.55		\$225,874.40
200 Personnel Services – Employee Benefits				
210 Group Insurance – Contracted Provider	30.73	49.68		80.41
220 Social Security Contributions	7,344.04	9,552.43		16,896.47
230 PSERS Retirement Contributions	31,709.96	41,857.35		73,567.31
260 Workers' Compensation	620.02	818.68		1,438.70
270 Group Insurance – Self-Insurance	18,227.33	30,786.04		49,013.37
Total Personnel Services – Employee Benefits	\$57,932.08	\$83,064.18		\$140,996.26
500 Other Purchased Services				
580 Travel	45.81			45.81
Total Other Purchased Services	\$45.81			\$45.81
600 Supplies				
610 General Supplies	398.74	353.53		752.27
640 Books and Periodicals	275.88	459.57		735.45
Total Supplies	\$674.62	\$813.10		\$1,487.72
Total 1243 Gifted Support	\$156,012.36	\$212,391.83		\$368,404.19

General Fund (10)

1270 Multi-Handicapped Support

300 Purchased Professional and Technical Services

322 Professional Educational Services – lus

330 Other Professional Services

Total Purchased Professional and Technical Services

Total 1270 Multi-Handicapped Support

	<u>Elementary</u>	<u>Secondary</u>	<u>Federal</u>	<u>Total</u>
322 Professional Educational Services – lus	304,154.26	311,735.03		615,889.29
330 Other Professional Services		11,880.00		11,880.00
Total Purchased Professional and Technical Services	\$304,154.26	\$323,615.03		\$627,769.29
Total 1270 Multi-Handicapped Support	\$304,154.26	\$323,615.03		\$627,769.29

LEA : 112671803 Dover Area SD

Printed 11/30/2018 8:05:21 AM

General Fund (10)

1280 Early Intervention Support

300 Purchased Professional and Technical Services

322 Professional Educational Services – lus

Total Purchased Professional and Technical Services

Total 1280 Early Intervention Support

	<u>Elementary</u>	<u>Secondary</u>	<u>Federal</u>	<u>Total</u>
	21,055.78		7,185.00	28,240.78
	\$21,055.78		\$7,185.00	\$28,240.78
	\$21,055.78		\$7,185.00	\$28,240.78

General Fund (10)

	<u>Elementary</u>	<u>Secondary</u>	<u>Federal</u>	<u>Total</u>
1290 Special Programs - Other Support				
300 <u>Purchased Professional and Technical Services</u>				
322 Professional Educational Services – Ius	20,880.06	53,981.07		74,861.13
323 Professional Educational Services – Other Educational Agencies	34,315.50	34,315.50		68,631.00
Total Purchased Professional and Technical Services	\$55,195.56	\$88,296.57		\$143,492.13
500 <u>Other Purchased Services</u>				
562 Tuition To Pennsylvania Charter Schools	222,854.71	184,721.59		407,576.30
568 Tuition To Private Residential Rehabilitative Institutions (PRRI) [In-State] and Detention Centers	3,373.60	49,622.88		52,996.48
594 IU Payment By Withholding for Institutionalized Children’s Programs – Special Classes	184.19	184.20		368.39
Total Other Purchased Services	\$226,412.50	\$234,528.67		\$460,941.17
Total 1290 Special Programs - Other Support	\$281,608.06	\$322,825.24		\$604,433.30

General Fund (10)

1300 Vocational Education

	<u>Elementary</u>	<u>Secondary</u>	<u>Federal</u>	<u>Total</u>
100 Personnel Services – Salaries				
100 Personnel Services – Salaries		1,206,421.21		1,206,421.21
Total Personnel Services – Salaries		\$1,206,421.21		\$1,206,421.21
200 Personnel Services – Employee Benefits				
210 Group Insurance – Contracted Provider		1,170.00		1,170.00
220 Social Security Contributions		89,228.25		89,228.25
230 PSERS Retirement Contributions		390,407.67		390,407.67
260 Workers' Compensation		6,691.73		6,691.73
270 Group Insurance – Self-Insurance		262,687.03		262,687.03
Total Personnel Services – Employee Benefits		\$750,184.68		\$750,184.68
300 Purchased Professional and Technical Services				
330 Other Professional Services		6,959.00		6,959.00
Total Purchased Professional and Technical Services		\$6,959.00		\$6,959.00
400 Purchased Property Services				
430 Repairs and Maintenance Services		1,068.17		1,068.17
Total Purchased Property Services		\$1,068.17		\$1,068.17
500 Other Purchased Services				
564 Tuition To Career and Technology Centers		1,047,398.42		1,047,398.42
580 Travel		6,906.31		6,906.31
Total Other Purchased Services		\$1,054,304.73		\$1,054,304.73
600 Supplies				
610 General Supplies		86,717.65		86,717.65
630 Food		2,493.07		2,493.07
640 Books and Periodicals		1,932.69		1,932.69
Total Supplies		\$91,143.41		\$91,143.41
700 Property				
752 Capital Equipment – Original and Additional		47,268.31		47,268.31
Total Property		\$47,268.31		\$47,268.31
800 Other Objects				
810 Dues and Fees		10,156.25		10,156.25
890 Miscellaneous Expenditures		4,750.00		4,750.00
Total Other Objects		\$14,906.25		\$14,906.25
Total 1300 Vocational Education		\$3,172,255.76		\$3,172,255.76

General Fund (10)

	<u>Elementary</u>	<u>Secondary</u>	<u>Federal</u>	<u>Total</u>
1400 Other Instructional Programs – Elementary / Secondary				
100 Personnel Services – Salaries				
100 Personnel Services – Salaries		179,753.12		179,753.12
Total Personnel Services – Salaries		\$179,753.12		\$179,753.12
200 Personnel Services – Employee Benefits				
210 Group Insurance – Contracted Provider		63.00		63.00
220 Social Security Contributions		13,489.13		13,489.13
230 PSERS Retirement Contributions		58,545.75		58,545.75
260 Workers' Compensation		1,145.04		1,145.04
270 Group Insurance – Self-Insurance		25,468.91		25,468.91
Total Personnel Services – Employee Benefits		\$98,711.83		\$98,711.83
500 Other Purchased Services				
561 Tuition To Other School Districts Within the State	10,589.99	46,615.38		57,205.37
568 Tuition To Private Residential Rehabilitative Institutions (PRRI) [In-State] and Detention Centers	5,184.10	29,413.46		34,597.56
580 Travel		360.78		360.78
Total Other Purchased Services	\$15,774.09	\$76,389.62		\$92,163.71
600 Supplies				
610 General Supplies		4,929.61		4,929.61
Total Supplies		\$4,929.61		\$4,929.61
800 Other Objects				
810 Dues and Fees	200.00	200.00		400.00
Total Other Objects	\$200.00	\$200.00		\$400.00
Total 1400 Other Instructional Programs – Elementary / Secondary	\$15,974.09	\$359,984.18		\$375,958.27

General Fund (10)

1410 Drivers' Education

100 Personnel Services – Salaries

	<u>Elementary</u>	<u>Secondary</u>	<u>Federal</u>	<u>Total</u>
100 Personnel Services – Salaries		74,830.00		74,830.00
Total Personnel Services – Salaries		\$74,830.00		\$74,830.00

200 Personnel Services – Employee Benefits

210 Group Insurance – Contracted Provider		28.32		28.32
220 Social Security Contributions		5,586.15		5,586.15
230 PSERS Retirement Contributions		24,372.25		24,372.25
260 Workers' Compensation		476.64		476.64
270 Group Insurance – Self-Insurance		10,065.00		10,065.00

Total Personnel Services – Employee Benefits		\$40,528.36		\$40,528.36
---	--	--------------------	--	--------------------

Total 1410 Drivers' Education		\$115,358.36		\$115,358.36
--------------------------------------	--	---------------------	--	---------------------

General Fund (10)

1430 Homebound Instruction

100 Personnel Services – Salaries

100 Personnel Services – Salaries

Total Personnel Services – Salaries

200 Personnel Services – Employee Benefits

220 Social Security Contributions

230 PSERS Retirement Contributions

260 Workers' Compensation

Total Personnel Services – Employee Benefits

500 Other Purchased Services

561 Tuition To Other School Districts Within the State

568 Tuition To Private Residential Rehabilitative Institutions (PRRI) [In-State] and Detention Centers

580 Travel

Total Other Purchased Services

Total 1430 Homebound Instruction

	<u>Elementary</u>	<u>Secondary</u>	<u>Federal</u>	<u>Total</u>
		8,476.08		8,476.08
		\$8,476.08		\$8,476.08
		633.46		633.46
		2,760.66		2,760.66
		53.97		53.97
		\$3,448.09		\$3,448.09
	4,910.00	40,935.39		45,845.39
	3,627.08	4,476.11		8,103.19
		360.78		360.78
	\$8,537.08	\$45,772.28		\$54,309.36
	\$8,537.08	\$57,696.45		\$66,233.53

General Fund (10)

	<u>Elementary</u>	<u>Secondary</u>	<u>Federal</u>	<u>Total</u>
1440 Alternative Regular Education Programs				
100 Personnel Services – Salaries				
100 Personnel Services – Salaries		96,447.04		96,447.04
Total Personnel Services – Salaries		\$96,447.04		\$96,447.04
200 Personnel Services – Employee Benefits				
210 Group Insurance – Contracted Provider		34.68		34.68
220 Social Security Contributions		7,269.52		7,269.52
230 PSERS Retirement Contributions		31,412.84		31,412.84
260 Workers' Compensation		614.43		614.43
270 Group Insurance – Self-Insurance		15,403.91		15,403.91
Total Personnel Services – Employee Benefits		\$54,735.38		\$54,735.38
500 Other Purchased Services				
561 Tuition To Other School Districts Within the State	5,679.99	5,679.99		11,359.98
568 Tuition To Private Residential Rehabilitative Institutions (PRRI) [In-State] and Detention Centers	1,557.02	24,937.35		26,494.37
Total Other Purchased Services	\$7,237.01	\$30,617.34		\$37,854.35
600 Supplies				
610 General Supplies		4,929.61		4,929.61
Total Supplies		\$4,929.61		\$4,929.61
800 Other Objects				
810 Dues and Fees	200.00	200.00		400.00
Total Other Objects	\$200.00	\$200.00		\$400.00
Total 1440 Alternative Regular Education Programs	\$7,437.01	\$186,929.37		\$194,366.38

LEA : 112671803 Dover Area SD

Printed 11/30/2018 8:05:21 AM

General Fund (10)

1441 Adjudicated / Court-Placed Programs

500 Other Purchased Services

	<u>Elementary</u>	<u>Secondary</u>	<u>Federal</u>	<u>Total</u>
561 Tuition To Other School Districts Within the State	5,679.99	5,679.99		11,359.98
568 Tuition To Private Residential Rehabilitative Institutions (PRRI) [In-State] and Detention Centers	1,557.02	23,060.31		24,617.33
Total Other Purchased Services	\$7,237.01	\$28,740.30		\$35,977.31
Total 1441 Adjudicated / Court-Placed Programs	\$7,237.01	\$28,740.30		\$35,977.31

General Fund (10)

	<u>Elementary</u>	<u>Secondary</u>	<u>Federal</u>	<u>Total</u>
1442 Alternative Education Programs				
100 Personnel Services – Salaries				
100 Personnel Services – Salaries		96,447.04		96,447.04
Total Personnel Services – Salaries		\$96,447.04		\$96,447.04
200 Personnel Services – Employee Benefits				
210 Group Insurance – Contracted Provider		34.68		34.68
220 Social Security Contributions		7,269.52		7,269.52
230 PSERS Retirement Contributions		31,412.84		31,412.84
260 Workers' Compensation		614.43		614.43
270 Group Insurance – Self-Insurance		15,403.91		15,403.91
Total Personnel Services – Employee Benefits		\$54,735.38		\$54,735.38
500 Other Purchased Services				
568 Tuition To Private Residential Rehabilitative Institutions (PRRI) [In-State] and Detention Centers		1,877.04		1,877.04
Total Other Purchased Services		\$1,877.04		\$1,877.04
600 Supplies				
610 General Supplies		4,929.61		4,929.61
Total Supplies		\$4,929.61		\$4,929.61
800 Other Objects				
810 Dues and Fees	200.00	200.00		400.00
Total Other Objects	\$200.00	\$200.00		\$400.00
Total 1442 Alternative Education Programs	\$200.00	\$158,189.07		\$158,389.07

LEA : 112671803 Dover Area SD

Printed 11/30/2018 8:05:21 AM

General Fund (10)

1500 Nonpublic School Programs

Elementary

Secondary

Federal

Total

300 Purchased Professional and Technical Services

330 Other Professional Services

511.00

511.00

Total Purchased Professional and Technical Services

\$511.00

\$511.00

Total 1500 Nonpublic School Programs

\$511.00

\$511.00

General Fund (10)

1700 Higher Education Programs for Secondary Students

Elementary

Secondary

Federal

Total

500 Other Purchased Services

566 Tuition To Institutions of Higher Education and Technical Institutes

12,500.00

Total Other Purchased Services

\$12,500.00

Total 1700 Higher Education Programs for Secondary Students

\$12,500.00

LEA : 112671803 Dover Area SD

Printed 11/30/2018 8:05:24 AM

General Fund (10)

2000 Support Services

Total

100 Personnel Services – Salaries

100 Personnel Services – Salaries 5,415,573.89

Total Personnel Services – Salaries \$5,415,573.89

200 Personnel Services – Employee Benefits

210 Group Insurance – Contracted Provider 12,791.90

220 Social Security Contributions 405,230.77

230 PSERS Retirement Contributions 1,760,729.60

240 Tuition Reimbursement 257,285.06

250 Unemployment Compensation 19.88

260 Workers' Compensation 33,941.74

270 Group Insurance – Self-Insurance 1,381,121.14

291 Other Retirement Plans 11,200.00

Total Personnel Services – Employee Benefits \$3,862,320.09

300 Purchased Professional and Technical Services

310 Official / Administrative Services 20,427.75

322 Professional Educational Services – Ius 562,728.73

323 Professional Educational Services – Other Educational Agencies 32,392.20

324 Professional Educational Services – Employee Training and Development Services 24,570.09

330 Other Professional Services 412,156.12

340 Technical Services 471,084.87

390 Other Purchased Professional and Technical Services 40,391.28

Total Purchased Professional and Technical Services \$1,563,751.04

400 Purchased Property Services

410 Cleaning Services 76,861.39

420 Utility Services 140,745.75

430 Repairs and Maintenance Services 320,777.25

440 Rentals 213,526.05

460 Extermination Services 5,278.42

490 Other Purchased Property Services 10,328.78

Total Purchased Property Services \$767,517.64

500 Other Purchased Services

511 Student Transportation Services from Another LEA Within the State 8,072.26

513 Contracted Carriers 2,968,492.32

516 Student Transportation Services From the IU 129,574.11

520 Insurance – General 41,173.78

522 Automotive Liability Insurance 11,711.00

523 General Property and Liability Insurance 114,520.00

530 Communications 129,819.67

549 Other Advertising/Public Relations 1,729.49

580 Travel 4,650.68

595 IU Payments By Withholding 26,646.75

599 Other Miscellaneous Purchased Services 4,214.00

Total Other Purchased Services \$3,440,604.06

LEA : 112671803 Dover Area SD

Printed 11/30/2018 8:05:24 AM

General Fund (10)

2000 Support Services

Total

600 Supplies

610 General Supplies	396,696.47
620 Energy	816,966.20
630 Food	12,459.21
640 Books and Periodicals	15,449.34
650 Supplies & Fees – Technology Related	182,636.66

Total Supplies	\$1,424,207.88
-----------------------	-----------------------

700 Property

752 Capital Equipment – Original and Additional	677.62
756 Capitalized Technology Hardware and Equipment – Original	442,355.24
762 Capitalized Equipment - Replacement	9,900.00
766 Capitalized Technology Hardware and Equipment – Replacement	55,720.00

Total Property	\$508,652.86
-----------------------	---------------------

800 Other Objects

810 Dues and Fees	71,120.59
-------------------	-----------

Total Other Objects	\$71,120.59
----------------------------	--------------------

Total 2000 Support Services	\$17,053,748.05
------------------------------------	------------------------

General Fund (10)

	<u>Elementary</u>	<u>Secondary</u>	<u>Federal</u>	<u>Total</u>
2100 Support Services – Students				
100 Personnel Services – Salaries				
100 Personnel Services – Salaries	277,720.83	423,877.63		771,587.18
Total Personnel Services – Salaries	\$277,720.83	\$423,877.63		\$771,587.18
200 Personnel Services – Employee Benefits				
210 Group Insurance – Contracted Provider	113.52	264.66		545.22
220 Social Security Contributions	20,718.36	31,395.86		57,194.72
230 PSERS Retirement Contributions	90,453.89	137,920.90		251,170.04
260 Workers' Compensation	1,769.24	2,700.08		4,915.05
270 Group Insurance – Self-Insurance	50,207.90	93,558.87		175,064.59
Total Personnel Services – Employee Benefits	\$163,262.91	\$265,840.37		\$488,889.62
300 Purchased Professional and Technical Services				
322 Professional Educational Services – lus	314,673.67		106,717.64	421,391.31
323 Professional Educational Services – Other Educational Agencies		32,392.20		32,392.20
330 Other Professional Services	123.99	248.01		372.00
340 Technical Services				3,330.00
Total Purchased Professional and Technical Services	\$314,797.66	\$32,640.21	\$106,717.64	\$457,485.51
500 Other Purchased Services				
580 Travel	10.55	21.10		31.65
Total Other Purchased Services	\$10.55	\$21.10		\$31.65
600 Supplies				
610 General Supplies	1,566.33	908.86		2,475.19
630 Food				79.68
640 Books and Periodicals		242.55		242.55
Total Supplies	\$1,566.33	\$1,151.41		\$2,797.42
800 Other Objects				
810 Dues and Fees				225.00
Total Other Objects				\$225.00
Total 2100 Support Services – Students	\$757,358.28	\$723,530.72	\$106,717.64	\$1,721,016.38

General Fund (10)

2120 Guidance Services

	<u>Elementary</u>	<u>Secondary</u>	<u>Federal</u>	<u>Total</u>
100 Personnel Services – Salaries				
100 Personnel Services – Salaries	277,720.83	423,877.63		701,598.46
Total Personnel Services – Salaries	\$277,720.83	\$423,877.63		\$701,598.46
200 Personnel Services – Employee Benefits				
210 Group Insurance – Contracted Provider	113.52	264.66		378.18
220 Social Security Contributions	20,718.36	31,395.86		52,114.22
230 PSERS Retirement Contributions	90,453.89	137,920.90		228,374.79
260 Workers' Compensation	1,769.24	2,700.08		4,469.32
270 Group Insurance – Self-Insurance	50,207.90	93,558.87		143,766.77
Total Personnel Services – Employee Benefits	\$163,262.91	\$265,840.37		\$429,103.28
300 Purchased Professional and Technical Services				
323 Professional Educational Services – Other Educational Agencies		32,392.20		32,392.20
330 Other Professional Services	123.99	248.01		372.00
Total Purchased Professional and Technical Services	\$123.99	\$32,640.21		\$32,764.20
500 Other Purchased Services				
580 Travel	10.55	21.10		31.65
Total Other Purchased Services	\$10.55	\$21.10		\$31.65
600 Supplies				
610 General Supplies	1,566.33	908.86		2,475.19
640 Books and Periodicals		242.55		242.55
Total Supplies	\$1,566.33	\$1,151.41		\$2,717.74
Total 2120 Guidance Services	\$442,684.61	\$723,530.72		\$1,166,215.33

General Fund (10)

2130 Attendance Services

Elementary

Secondary

Federal

Total

100 Personnel Services – Salaries

100 Personnel Services – Salaries

19,584.87

Total Personnel Services – Salaries

\$19,584.87

200 Personnel Services – Employee Benefits

210 Group Insurance – Contracted Provider

9.48

220 Social Security Contributions

1,368.96

230 PSERS Retirement Contributions

6,378.74

260 Workers' Compensation

124.69

270 Group Insurance – Self-Insurance

9,415.00

Total Personnel Services – Employee Benefits

\$17,296.87

Total 2130 Attendance Services

\$36,881.74

LEA : 112671803 Dover Area SD

Printed 11/30/2018 8:05:24 AM

General Fund (10)

2140 Psychological Services

300 Purchased Professional and Technical Services

322 Professional Educational Services – lus

Total Purchased Professional and Technical Services

Total 2140 Psychological Services

Elementary

Secondary

Federal

Total

314,673.67

106,717.64

421,391.31

\$314,673.67

\$106,717.64

\$421,391.31

\$314,673.67

\$106,717.64

\$421,391.31

General Fund (10)

2160 Social Work Services

Elementary

Secondary

Federal

Total

100 Personnel Services – Salaries

100 Personnel Services – Salaries

50,403.85

Total Personnel Services – Salaries

\$50,403.85

200 Personnel Services – Employee Benefits

210 Group Insurance – Contracted Provider

157.56

220 Social Security Contributions

3,711.54

230 PSERS Retirement Contributions

16,416.51

260 Workers' Compensation

321.04

270 Group Insurance – Self-Insurance

18,116.91

Total Personnel Services – Employee Benefits

\$38,723.56

300 Purchased Professional and Technical Services

340 Technical Services

3,330.00

Total Purchased Professional and Technical Services

\$3,330.00

600 Supplies

630 Food

79.68

Total Supplies

\$79.68

800 Other Objects

810 Dues and Fees

225.00

Total Other Objects

\$225.00

Total 2160 Social Work Services

\$92,762.09

General Fund (10)

2170 Student Accounting Services

Elementary

Secondary

Federal

Total

200 Personnel Services – Employee Benefits

270 Group Insurance – Self-Insurance

3,765.91

Total Personnel Services – Employee Benefits

\$3,765.91

Total 2170 Student Accounting Services

\$3,765.91

General Fund (10)

	<u>Elementary</u>	<u>Secondary</u>	<u>Federal</u>	<u>Total</u>
2200 Support Services – Instructional Staff				
100 Personnel Services – Salaries				
100 Personnel Services – Salaries	638,834.42	447,530.37		1,086,364.79
Total Personnel Services – Salaries	\$638,834.42	\$447,530.37		\$1,086,364.79
200 Personnel Services – Employee Benefits				
210 Group Insurance – Contracted Provider	1,448.41	1,901.89		3,350.30
220 Social Security Contributions	46,781.03	33,216.51	5,580.28	85,577.82
230 PSERS Retirement Contributions	209,355.79	147,340.33	12,202.57	368,898.69
240 Tuition Reimbursement	104,329.24	136,593.97		240,923.21
260 Workers' Compensation	3,569.08	2,350.81	477.81	6,397.70
270 Group Insurance – Self-Insurance	163,888.20	79,066.42		242,954.62
291 Other Retirement Plans	600.00	600.00		1,200.00
Total Personnel Services – Employee Benefits	\$529,971.75	\$401,069.93	\$18,260.66	\$949,302.34
300 Purchased Professional and Technical Services				
324 Professional Educational Services – Employee Training and Development Services			380.95	380.95
330 Other Professional Services			133,133.40	133,133.40
340 Technical Services	223,750.60	223,750.58		447,501.18
390 Other Purchased Professional and Technical Services	13,200.00	13,200.00		26,400.00
Total Purchased Professional and Technical Services	\$236,950.60	\$236,950.58	\$133,514.35	\$607,415.53
400 Purchased Property Services				
430 Repairs and Maintenance Services	12,938.12	12,938.10		25,876.22
Total Purchased Property Services	\$12,938.12	\$12,938.10		\$25,876.22
500 Other Purchased Services				
520 Insurance – General	3,236.89	3,236.89		6,473.78
580 Travel	1,552.10	1,552.08		3,104.18
Total Other Purchased Services	\$4,788.99	\$4,788.97		\$9,577.96
600 Supplies				
610 General Supplies	25,366.66	33,877.23		59,243.89
640 Books and Periodicals	9,147.85	3,994.23	1,711.91	14,853.99
650 Supplies & Fees – Technology Related	47,843.38	47,843.38		95,686.76
Total Supplies	\$82,357.89	\$85,714.84	\$1,711.91	\$169,784.64
700 Property				
752 Capital Equipment – Original and Additional	338.81	338.81		677.62
756 Capitalized Technology Hardware and Equipment – Original	221,177.63	221,177.61		442,355.24
766 Capitalized Technology Hardware and Equipment – Replacement	27,860.00	27,860.00		55,720.00
Total Property	\$249,376.44	\$249,376.42		\$498,752.86
Total 2200 Support Services – Instructional Staff	\$1,755,218.21	\$1,438,369.21	\$153,486.92	\$3,347,074.34

General Fund (10)

2210 Supervision of Educational Media Services

100 Personnel Services – Salaries

100 Personnel Services – Salaries

Total Personnel Services – Salaries

200 Personnel Services – Employee Benefits

210 Group Insurance – Contracted Provider

220 Social Security Contributions

230 PSERS Retirement Contributions

260 Workers' Compensation

270 Group Insurance – Self-Insurance

Total Personnel Services – Employee Benefits

Total 2210 Supervision of Educational Media Services

Elementary

Secondary

Federal

Total

35,407.71

35,407.70

70,815.41

\$35,407.71

\$35,407.70

\$70,815.41

39.39

39.39

78.78

2,640.55

2,640.55

5,281.10

11,532.35

11,532.34

23,064.69

(274.45)

(274.45)

(548.90)

9,354.01

9,354.01

18,708.02

\$23,291.85

\$23,291.84

\$46,583.69

\$58,699.56

\$58,699.54

\$117,399.10

General Fund (10)

2211 Supervision of Educational Media Services – Head of Component

	<u>Elementary</u>	<u>Secondary</u>	<u>Federal</u>	<u>Total</u>
100 Personnel Services – Salaries				
100 Personnel Services – Salaries	35,407.71	35,407.70		70,815.41
Total Personnel Services – Salaries	\$35,407.71	\$35,407.70		\$70,815.41
200 Personnel Services – Employee Benefits				
210 Group Insurance – Contracted Provider	39.39	39.39		78.78
220 Social Security Contributions	2,640.55	2,640.55		5,281.10
230 PSERS Retirement Contributions	11,532.35	11,532.34		23,064.69
260 Workers' Compensation	(274.45)	(274.45)		(548.90)
270 Group Insurance – Self-Insurance	9,354.01	9,354.01		18,708.02
Total Personnel Services – Employee Benefits	\$23,291.85	\$23,291.84		\$46,583.69
Total 2211 Supervision of Educational Media Services – Head of Component	\$58,699.56	\$58,699.54		\$117,399.10

General Fund (10)

2220 Technology Support Services

	<u>Elementary</u>	<u>Secondary</u>	<u>Federal</u>	<u>Total</u>
100 Personnel Services – Salaries				
100 Personnel Services – Salaries	36,270.25	36,270.24		72,540.49
Total Personnel Services – Salaries	\$36,270.25	\$36,270.24		\$72,540.49
200 Personnel Services – Employee Benefits				
210 Group Insurance – Contracted Provider	201.57	201.57		403.14
220 Social Security Contributions	2,718.92	2,718.92		5,437.84
230 PSERS Retirement Contributions	11,813.24	11,813.24		23,626.48
260 Workers' Compensation	231.01	231.01		462.02
270 Group Insurance – Self-Insurance	4,851.00	4,851.00		9,702.00
Total Personnel Services – Employee Benefits	\$19,815.74	\$19,815.74		\$39,631.48
300 Purchased Professional and Technical Services				
340 Technical Services	93,684.97	93,684.96		187,369.93
Total Purchased Professional and Technical Services	\$93,684.97	\$93,684.96		\$187,369.93
400 Purchased Property Services				
430 Repairs and Maintenance Services	3,394.99	3,394.98		6,789.97
Total Purchased Property Services	\$3,394.99	\$3,394.98		\$6,789.97
500 Other Purchased Services				
580 Travel	135.28	135.27		270.55
Total Other Purchased Services	\$135.28	\$135.27		\$270.55
600 Supplies				
610 General Supplies	19,733.63	19,733.63		39,467.26
Total Supplies	\$19,733.63	\$19,733.63		\$39,467.26
700 Property				
752 Capital Equipment – Original and Additional	338.81	338.81		677.62
756 Capitalized Technology Hardware and Equipment – Original	61,542.95	61,542.94		123,085.89
Total Property	\$61,881.76	\$61,881.75		\$123,763.51
Total 2220 Technology Support Services	\$234,916.62	\$234,916.57		\$469,833.19

General Fund (10)

	<u>Elementary</u>	<u>Secondary</u>	<u>Federal</u>	<u>Total</u>
2240 Computer-Assisted Instruction Support Services				
300 <u>Purchased Professional and Technical Services</u>				
340 Technical Services	130,065.63	130,065.62		260,131.25
Total Purchased Professional and Technical Services	\$130,065.63	\$130,065.62		\$260,131.25
400 <u>Purchased Property Services</u>				
430 Repairs and Maintenance Services	9,543.13	9,543.12		19,086.25
Total Purchased Property Services	\$9,543.13	\$9,543.12		\$19,086.25
500 <u>Other Purchased Services</u>				
520 Insurance – General	3,236.89	3,236.89		6,473.78
Total Other Purchased Services	\$3,236.89	\$3,236.89		\$6,473.78
600 <u>Supplies</u>				
610 General Supplies	4,178.57	4,178.56		8,357.13
650 Supplies & Fees – Technology Related	47,843.38	47,843.38		95,686.76
Total Supplies	\$52,021.95	\$52,021.94		\$104,043.89
700 <u>Property</u>				
756 Capitalized Technology Hardware and Equipment – Original	159,634.68	159,634.67		319,269.35
766 Capitalized Technology Hardware and Equipment – Replacement	27,860.00	27,860.00		55,720.00
Total Property	\$187,494.68	\$187,494.67		\$374,989.35
Total 2240 Computer-Assisted Instruction Support Services	\$382,362.28	\$382,362.24		\$764,724.52

General Fund (10)

2250 School Library Services

100 Personnel Services – Salaries

	<u>Elementary</u>	<u>Secondary</u>	<u>Federal</u>	<u>Total</u>
100 Personnel Services – Salaries	331,888.02	140,584.00		472,472.02
Total Personnel Services – Salaries	\$331,888.02	\$140,584.00		\$472,472.02

200 Personnel Services – Employee Benefits

210 Group Insurance – Contracted Provider	132.42	585.90		718.32
220 Social Security Contributions	24,034.07	10,469.56		34,503.63
230 PSERS Retirement Contributions	106,133.83	44,118.40		150,252.23
260 Workers' Compensation	2,113.82	895.55		3,009.37
270 Group Insurance – Self-Insurance	97,115.64	12,293.86		109,409.50
Total Personnel Services – Employee Benefits	\$229,529.78	\$68,363.27		\$297,893.05

600 Supplies

610 General Supplies	993.08	9,965.04		10,958.12
640 Books and Periodicals	9,147.85	3,994.23		13,142.08

Total Supplies	\$10,140.93	\$13,959.27		\$24,100.20
Total 2250 School Library Services	\$571,558.73	\$222,906.54		\$794,465.27

General Fund (10)

2260 Instruction and Curriculum Development Services

	<u>Elementary</u>	<u>Secondary</u>	<u>Federal</u>	<u>Total</u>
100 Personnel Services – Salaries				
100 Personnel Services – Salaries	235,268.44	235,268.43		470,536.87
Total Personnel Services – Salaries	\$235,268.44	\$235,268.43		\$470,536.87
200 Personnel Services – Employee Benefits				
210 Group Insurance – Contracted Provider	1,075.03	1,075.03		2,150.06
220 Social Security Contributions	17,387.49	17,387.48		34,774.97
230 PSERS Retirement Contributions	76,626.87	76,626.86		153,253.73
260 Workers' Compensation	1,498.70	1,498.70		2,997.40
270 Group Insurance – Self-Insurance	52,567.55	52,567.55		105,135.10
291 Other Retirement Plans	600.00	600.00		1,200.00
Total Personnel Services – Employee Benefits	\$149,755.64	\$149,755.62		\$299,511.26
300 Purchased Professional and Technical Services				
390 Other Purchased Professional and Technical Services	13,200.00	13,200.00		26,400.00
Total Purchased Professional and Technical Services	\$13,200.00	\$13,200.00		\$26,400.00
500 Other Purchased Services				
580 Travel	1,416.82	1,416.81		2,833.63
Total Other Purchased Services	\$1,416.82	\$1,416.81		\$2,833.63
600 Supplies				
610 General Supplies	461.38			461.38
Total Supplies	\$461.38			\$461.38
Total 2260 Instruction and Curriculum Development Services	\$400,102.28	\$399,640.86		\$799,743.14

General Fund (10)

	<u>Elementary</u>	<u>Secondary</u>	<u>Federal</u>	<u>Total</u>
2270 Instructional Staff Professional Development Services				
200 Personnel Services – Employee Benefits				
220 Social Security Contributions			5,580.28	5,580.28
230 PSERS Retirement Contributions	3,249.50	3,249.49	12,202.57	18,701.56
240 Tuition Reimbursement	104,329.24	136,593.97		240,923.21
260 Workers' Compensation			477.81	477.81
Total Personnel Services – Employee Benefits	\$107,578.74	\$139,843.46	\$18,260.66	\$265,682.86
300 Purchased Professional and Technical Services				
324 Professional Educational Services – Employee Training and Development Services			380.95	380.95
330 Other Professional Services			133,133.40	133,133.40
Total Purchased Professional and Technical Services			\$133,514.35	\$133,514.35
600 Supplies				
640 Books and Periodicals			1,711.91	1,711.91
Total Supplies			\$1,711.91	\$1,711.91
Total 2270 Instructional Staff Professional Development Services	\$107,578.74	\$139,843.46	\$153,486.92	\$400,909.12

General Fund (10)

	<u>Elementary</u>	<u>Secondary</u>	<u>Federal</u>	<u>Total</u>
2300 Support Services – Administration				
100 Personnel Services – Salaries				
100 Personnel Services – Salaries	621,925.19	521,715.51		1,266,003.88
Total Personnel Services – Salaries	\$621,925.19	\$521,715.51		\$1,266,003.88
200 Personnel Services – Employee Benefits				
210 Group Insurance – Contracted Provider	2,011.92	2,055.36		4,883.04
220 Social Security Contributions	45,821.22	37,926.39		94,259.51
230 PSERS Retirement Contributions	202,569.60	168,067.52		408,987.66
260 Workers' Compensation	3,961.80	3,324.10		8,067.91
270 Group Insurance – Self-Insurance	110,359.57	114,303.79		255,213.22
291 Other Retirement Plans	2,400.00	1,200.00		5,600.00
Total Personnel Services – Employee Benefits	\$367,124.11	\$326,877.16		\$777,011.34
300 Purchased Professional and Technical Services				
310 Official / Administrative Services				20,427.75
324 Professional Educational Services – Employee Training and Development Services	499.97	1,200.00		1,699.97
330 Other Professional Services				84,082.05
390 Other Purchased Professional and Technical Services				13,766.28
Total Purchased Professional and Technical Services	\$499.97	\$1,200.00		\$119,976.05
500 Other Purchased Services				
520 Insurance – General				34,400.00
549 Other Advertising/Public Relations				473.28
580 Travel				771.42
599 Other Miscellaneous Purchased Services				4,214.00
Total Other Purchased Services				\$39,858.70
600 Supplies				
610 General Supplies	2,085.85	2,314.77		24,911.28
630 Food	908.88	53.12		1,873.11
640 Books and Periodicals				188.25
Total Supplies	\$2,994.73	\$2,367.89		\$26,972.64
800 Other Objects				
810 Dues and Fees	968.00	410.78		1,578.78
Total Other Objects	\$968.00	\$410.78		\$1,578.78
Total 2300 Support Services – Administration	\$993,512.00	\$852,571.34		\$2,231,401.39

LEA : 112671803 Dover Area SD

Printed 11/30/2018 8:05:24 AM

General Fund (10)

2310 Board Services

Elementary

Secondary

Federal

Total

300 Purchased Professional and Technical Services

310 Official / Administrative Services

764.15

390 Other Purchased Professional and Technical Services

13,766.28

Total Purchased Professional and Technical Services

\$14,530.43

500 Other Purchased Services

520 Insurance – General

19,296.00

Total Other Purchased Services

\$19,296.00

600 Supplies

610 General Supplies

2,465.21

630 Food

649.84

Total Supplies

\$3,115.05

Total 2310 Board Services

\$36,941.48

General Fund (10)

	<u>Elementary</u>	<u>Secondary</u>	<u>Federal</u>	<u>Total</u>
2330 Tax Assessment and Collection Services				
200 <u>Personnel Services – Employee Benefits</u>				
220 Social Security Contributions				1,504.25
260 Workers' Compensation				2.59
Total Personnel Services – Employee Benefits				\$1,506.84
300 <u>Purchased Professional and Technical Services</u>				
310 Official / Administrative Services				19,663.60
Total Purchased Professional and Technical Services				\$19,663.60
500 <u>Other Purchased Services</u>				
520 Insurance – General				15,104.00
Total Other Purchased Services				\$15,104.00
600 <u>Supplies</u>				
610 General Supplies				11,968.34
Total Supplies				\$11,968.34
Total 2330 Tax Assessment and Collection Services				\$48,242.78

General Fund (10)

2350 Legal and Accounting Services

Elementary

Secondary

Federal

Total

300 Purchased Professional and Technical Services

330 Other Professional Services

84,082.05

Total Purchased Professional and Technical Services

\$84,082.05

Total 2350 Legal and Accounting Services

\$84,082.05

General Fund (10)

	<u>Elementary</u>	<u>Secondary</u>	<u>Federal</u>	<u>Total</u>
2360 Office of the Superintendent / Executive Director Services				
100 Personnel Services – Salaries				
100 Personnel Services – Salaries				122,363.18
Total Personnel Services – Salaries				\$122,363.18
200 Personnel Services – Employee Benefits				
210 Group Insurance – Contracted Provider				815.76
220 Social Security Contributions				9,007.65
230 PSERS Retirement Contributions				38,350.54
260 Workers' Compensation				779.42
270 Group Insurance – Self-Insurance				31,935.81
291 Other Retirement Plans				2,000.00
Total Personnel Services – Employee Benefits				\$82,889.18
500 Other Purchased Services				
549 Other Advertising/Public Relations				473.28
580 Travel				771.42
599 Other Miscellaneous Purchased Services				4,214.00
Total Other Purchased Services				\$5,458.70
600 Supplies				
610 General Supplies				6,077.11
630 Food				261.27
640 Books and Periodicals				188.25
Total Supplies				\$6,526.63
800 Other Objects				
810 Dues and Fees				200.00
Total Other Objects				\$200.00
Total 2360 Office of the Superintendent / Executive Director Services				\$217,437.69

LEA : 112671803 Dover Area SD

Printed 11/30/2018 8:05:24 AM

General Fund (10)

2370 Community Relations Services

200 Personnel Services – Employee Benefits

270 Group Insurance – Self-Insurance

Total Personnel Services – Employee Benefits

Total 2370 Community Relations Services

Elementary

Secondary

Federal

Total

(1,385.95)

(\$1,385.95)

(\$1,385.95)

General Fund (10)

2380 Office of the Principal Services

100 Personnel Services – Salaries

	<u>Elementary</u>	<u>Secondary</u>	<u>Federal</u>	<u>Total</u>
100 Personnel Services – Salaries	621,925.19	521,715.51		1,143,640.70
Total Personnel Services – Salaries	\$621,925.19	\$521,715.51		\$1,143,640.70

200 Personnel Services – Employee Benefits

210 Group Insurance – Contracted Provider	2,011.92	2,055.36		4,067.28
220 Social Security Contributions	45,821.22	37,926.39		83,747.61
230 PSERS Retirement Contributions	202,569.60	168,067.52		370,637.12
260 Workers' Compensation	3,961.80	3,324.10		7,285.90
270 Group Insurance – Self-Insurance	110,359.57	114,303.79		224,663.36
291 Other Retirement Plans	2,400.00	1,200.00		3,600.00
Total Personnel Services – Employee Benefits	\$367,124.11	\$326,877.16		\$694,001.27

300 Purchased Professional and Technical Services

324 Professional Educational Services – Employee Training and Development Services	499.97	1,200.00		1,699.97
Total Purchased Professional and Technical Services	\$499.97	\$1,200.00		\$1,699.97

600 Supplies

610 General Supplies	2,085.85	2,314.77		4,400.62
630 Food	908.88	53.12		962.00
Total Supplies	\$2,994.73	\$2,367.89		\$5,362.62

800 Other Objects

810 Dues and Fees	968.00	410.78		1,378.78
Total Other Objects	\$968.00	\$410.78		\$1,378.78

Total 2380 Office of the Principal Services

	\$993,512.00	\$852,571.34		\$1,846,083.34
--	---------------------	---------------------	--	-----------------------

General Fund (10)

	<u>Elementary</u>	<u>Secondary</u>	<u>Federal</u>	<u>Total</u>
2400 Support Services – Pupil Health				
100 Personnel Services – Salaries				
100 Personnel Services – Salaries				369,858.11
Total Personnel Services – Salaries				\$369,858.11
200 Personnel Services – Employee Benefits				
210 Group Insurance – Contracted Provider				145.02
220 Social Security Contributions				26,934.85
230 PSERS Retirement Contributions				115,865.47
260 Workers' Compensation				2,355.84
270 Group Insurance – Self-Insurance				119,731.04
Total Personnel Services – Employee Benefits				\$265,032.22
300 Purchased Professional and Technical Services				
322 Professional Educational Services – lus				141,337.42
330 Other Professional Services				3,776.59
Total Purchased Professional and Technical Services				\$145,114.01
400 Purchased Property Services				
430 Repairs and Maintenance Services				450.00
Total Purchased Property Services				\$450.00
600 Supplies				
610 General Supplies				11,291.34
630 Food				293.67
Total Supplies				\$11,585.01
Total 2400 Support Services – Pupil Health				\$792,039.35

General Fund (10)

2420 Medical Services

	<u>Elementary</u>	<u>Secondary</u>	<u>Federal</u>	<u>Total</u>
100 Personnel Services – Salaries				
100 Personnel Services – Salaries				369,858.11
Total Personnel Services – Salaries				\$369,858.11
200 Personnel Services – Employee Benefits				
210 Group Insurance – Contracted Provider				145.02
220 Social Security Contributions				26,934.85
230 PSERS Retirement Contributions				115,865.47
260 Workers' Compensation				2,355.84
270 Group Insurance – Self-Insurance				119,731.04
Total Personnel Services – Employee Benefits				\$265,032.22
300 Purchased Professional and Technical Services				
322 Professional Educational Services – lus				141,337.42
330 Other Professional Services				3,776.59
Total Purchased Professional and Technical Services				\$145,114.01
400 Purchased Property Services				
430 Repairs and Maintenance Services				450.00
Total Purchased Property Services				\$450.00
600 Supplies				
610 General Supplies				11,291.34
630 Food				293.67
Total Supplies				\$11,585.01
Total 2420 Medical Services				\$792,039.35

General Fund (10)

2500 Support Services – Business

Elementary Secondary Federal Total

100 Personnel Services – Salaries

100 Personnel Services – Salaries 363,511.35

Total Personnel Services – Salaries \$363,511.35

200 Personnel Services – Employee Benefits

210 Group Insurance – Contracted Provider 1,638.18

220 Social Security Contributions 26,036.31

230 PSERS Retirement Contributions 116,553.83

260 Workers' Compensation 2,315.11

270 Group Insurance – Self-Insurance 108,651.65

291 Other Retirement Plans 2,000.00

Total Personnel Services – Employee Benefits \$257,195.08

300 Purchased Professional and Technical Services

324 Professional Educational Services – Employee Training and Development Services 1,166.55

330 Other Professional Services 25,500.00

340 Technical Services 7,199.74

Total Purchased Professional and Technical Services \$33,866.29

500 Other Purchased Services

520 Insurance – General 300.00

549 Other Advertising/Public Relations 1,059.40

580 Travel 15.00

Total Other Purchased Services \$1,374.40

600 Supplies

610 General Supplies 26,540.62

630 Food 439.78

640 Books and Periodicals 164.55

650 Supplies & Fees – Technology Related 54,949.90

Total Supplies \$82,094.85

800 Other Objects

810 Dues and Fees 68,544.58

Total Other Objects \$68,544.58

Total 2500 Support Services – Business \$806,586.55

General Fund (10)

2510 Fiscal Services

Elementary

Secondary

Federal

Total

100 Personnel Services – Salaries

100 Personnel Services – Salaries

322,737.60

Total Personnel Services – Salaries

\$322,737.60

200 Personnel Services – Employee Benefits

210 Group Insurance – Contracted Provider

1,638.18

220 Social Security Contributions

23,135.40

230 PSERS Retirement Contributions

103,273.84

260 Workers' Compensation

2,055.40

270 Group Insurance – Self-Insurance

109,307.59

291 Other Retirement Plans

2,000.00

Total Personnel Services – Employee Benefits

\$241,410.41

300 Purchased Professional and Technical Services

324 Professional Educational Services – Employee Training and Development Services

1,166.55

330 Other Professional Services

25,500.00

340 Technical Services

7,199.74

Total Purchased Professional and Technical Services

\$33,866.29

500 Other Purchased Services

520 Insurance – General

300.00

549 Other Advertising/Public Relations

1,059.40

580 Travel

15.00

Total Other Purchased Services

\$1,374.40

600 Supplies

610 General Supplies

19,952.10

630 Food

439.78

640 Books and Periodicals

164.55

650 Supplies & Fees – Technology Related

54,949.90

Total Supplies

\$75,506.33

800 Other Objects

810 Dues and Fees

68,544.58

Total Other Objects

\$68,544.58

Total 2510 Fiscal Services

\$743,439.61

General Fund (10)

	<u>Elementary</u>	<u>Secondary</u>	<u>Federal</u>	<u>Total</u>
2511 Supervision of Fiscal Services - Head of Component				
100 Personnel Services – Salaries				
100 Personnel Services – Salaries				165,738.13
Total Personnel Services – Salaries				\$165,738.13
200 Personnel Services – Employee Benefits				
210 Group Insurance – Contracted Provider				1,397.94
220 Social Security Contributions				12,018.82
230 PSERS Retirement Contributions				52,171.66
260 Workers' Compensation				1,055.83
270 Group Insurance – Self-Insurance				48,408.69
291 Other Retirement Plans				2,000.00
Total Personnel Services – Employee Benefits				\$117,052.94
300 Purchased Professional and Technical Services				
324 Professional Educational Services – Employee Training and Development Services				966.55
340 Technical Services				7,199.74
Total Purchased Professional and Technical Services				\$8,166.29
500 Other Purchased Services				
520 Insurance – General				300.00
549 Other Advertising/Public Relations				1,059.40
580 Travel				15.00
Total Other Purchased Services				\$1,374.40
600 Supplies				
610 General Supplies				19,952.10
630 Food				439.78
640 Books and Periodicals				164.55
650 Supplies & Fees – Technology Related				54,949.90
Total Supplies				\$75,506.33
800 Other Objects				
810 Dues and Fees				446.94
Total Other Objects				\$446.94
Total 2511 Supervision of Fiscal Services - Head of Component				\$368,285.03

General Fund (10)

2513 Receiving and Disbursing Funds Services

Elementary

Secondary

Federal

Total

100 Personnel Services – Salaries

100 Personnel Services – Salaries

75,051.53

Total Personnel Services – Salaries

\$75,051.53

200 Personnel Services – Employee Benefits

210 Group Insurance – Contracted Provider

37.80

220 Social Security Contributions

5,291.79

230 PSERS Retirement Contributions

24,444.26

260 Workers' Compensation

478.11

270 Group Insurance – Self-Insurance

27,491.94

Total Personnel Services – Employee Benefits

\$57,743.90

Total 2513 Receiving and Disbursing Funds Services

\$132,795.43

General Fund (10)

2514 Payroll Services

100 Personnel Services – Salaries

100 Personnel Services – Salaries

Elementary

Secondary

Federal

Total

34,095.53

Total Personnel Services – Salaries

\$34,095.53

200 Personnel Services – Employee Benefits

210 Group Insurance – Contracted Provider

14.16

220 Social Security Contributions

2,409.37

230 PSERS Retirement Contributions

11,104.89

260 Workers' Compensation

217.20

270 Group Insurance – Self-Insurance

16,946.96

Total Personnel Services – Employee Benefits

\$30,692.58

Total 2514 Payroll Services

\$64,788.11

General Fund (10)

2515 Financial Accounting Services

Elementary

Secondary

Federal

Total

100 Personnel Services – Salaries

100 Personnel Services – Salaries

47,852.41

Total Personnel Services – Salaries

\$47,852.41

200 Personnel Services – Employee Benefits

210 Group Insurance – Contracted Provider

188.28

220 Social Security Contributions

3,415.42

230 PSERS Retirement Contributions

15,553.03

260 Workers' Compensation

304.26

270 Group Insurance – Self-Insurance

16,460.00

Total Personnel Services – Employee Benefits

\$35,920.99

300 Purchased Professional and Technical Services

324 Professional Educational Services – Employee Training and Development Services

200.00

Total Purchased Professional and Technical Services

\$200.00

800 Other Objects

810 Dues and Fees

233.38

Total Other Objects

\$233.38

Total 2515 Financial Accounting Services

\$84,206.78

General Fund (10)

2516 Internal Auditing Services

Elementary

Secondary

Federal

Total

300 Purchased Professional and Technical Services

330 Other Professional Services

25,500.00

Total Purchased Professional and Technical Services

\$25,500.00

Total 2516 Internal Auditing Services

\$25,500.00

LEA : 112671803 Dover Area SD

Printed 11/30/2018 8:05:24 AM

General Fund (10)

2519 Other Fiscal Services

Elementary

Secondary

Federal

Total

800 Other Objects

810 Dues and Fees

67,864.26

Total Other Objects

\$67,864.26

Total 2519 Other Fiscal Services

\$67,864.26

General Fund (10)

2530 Warehousing and Distributing Services	<u>Elementary</u>	<u>Secondary</u>	<u>Federal</u>	<u>Total</u>
100 Personnel Services – Salaries				
100 Personnel Services – Salaries				28,974.37
Total Personnel Services – Salaries				\$28,974.37
200 Personnel Services – Employee Benefits				
220 Social Security Contributions				2,014.46
230 PSERS Retirement Contributions				9,436.93
260 Workers' Compensation				184.56
270 Group Insurance – Self-Insurance				(655.94)
Total Personnel Services – Employee Benefits				\$10,980.01
Total 2530 Warehousing and Distributing Services				\$39,954.38

General Fund (10)

2540 Printing, Publishing and Duplicating Services

Elementary

Secondary

Federal

Total

100 Personnel Services – Salaries

100 Personnel Services – Salaries

11,799.38

Total Personnel Services – Salaries

\$11,799.38

200 Personnel Services – Employee Benefits

220 Social Security Contributions

886.45

230 PSERS Retirement Contributions

3,843.06

260 Workers' Compensation

75.15

Total Personnel Services – Employee Benefits

\$4,804.66

600 Supplies

610 General Supplies

6,588.52

Total Supplies

\$6,588.52

Total 2540 Printing, Publishing and Duplicating Services

\$23,192.56

General Fund (10)

	<u>Elementary</u>	<u>Secondary</u>	<u>Federal</u>	<u>Total</u>
2600 Operation and Maintenance of Plant Services				
100 Personnel Services – Salaries				
100 Personnel Services – Salaries				1,215,646.67
Total Personnel Services – Salaries				\$1,215,646.67
200 Personnel Services – Employee Benefits				
210 Group Insurance – Contracted Provider				1,399.38
220 Social Security Contributions				90,082.38
230 PSERS Retirement Contributions				390,164.05
260 Workers' Compensation				7,707.70
270 Group Insurance – Self-Insurance				370,573.73
291 Other Retirement Plans				1,200.00
Total Personnel Services – Employee Benefits				\$861,127.24
400 Purchased Property Services				
410 Cleaning Services				76,861.39
420 Utility Services				140,745.75
430 Repairs and Maintenance Services				291,996.03
440 Rentals				213,526.05
460 Extermination Services				5,278.42
490 Other Purchased Property Services				10,328.78
Total Purchased Property Services				\$738,736.42
500 Other Purchased Services				
522 Automotive Liability Insurance				11,711.00
523 General Property and Liability Insurance				114,520.00
530 Communications				114,458.07
580 Travel				360.41
Total Other Purchased Services				\$241,049.48
600 Supplies				
610 General Supplies	139,174.89	139,174.87		278,349.76
620 Energy				804,736.82
Total Supplies	\$139,174.89	\$139,174.87		\$1,083,086.58
700 Property				
762 Capitalized Equipment - Replacement				9,900.00
Total Property				\$9,900.00
800 Other Objects				
810 Dues and Fees				469.23
Total Other Objects				\$469.23
Total 2600 Operation and Maintenance of Plant Services	\$139,174.89	\$139,174.87		\$4,150,015.62

General Fund (10)

2610 Supervision of Operation and Maintenance of Plant Services

Elementary

Secondary

Federal

Total

100 Personnel Services – Salaries

100 Personnel Services – Salaries

103,349.90

Total Personnel Services – Salaries

\$103,349.90

200 Personnel Services – Employee Benefits

210 Group Insurance – Contracted Provider

749.76

220 Social Security Contributions

7,960.29

230 PSERS Retirement Contributions

34,976.41

260 Workers' Compensation

658.22

270 Group Insurance – Self-Insurance

23,091.53

291 Other Retirement Plans

1,200.00

Total Personnel Services – Employee Benefits

\$68,636.21

Total 2610 Supervision of Operation and Maintenance of Plant Services

\$171,986.11

General Fund (10)

	<u>Elementary</u>	<u>Secondary</u>	<u>Federal</u>	<u>Total</u>
2611 Supervision of Operation and Maintenance of Plant Services – Head of Component				
100 Personnel Services – Salaries				
100 Personnel Services – Salaries				103,349.90
Total Personnel Services – Salaries				\$103,349.90
200 Personnel Services – Employee Benefits				
210 Group Insurance – Contracted Provider				749.76
220 Social Security Contributions				7,960.29
230 PSERS Retirement Contributions				34,976.41
260 Workers' Compensation				658.22
270 Group Insurance – Self-Insurance				23,091.53
291 Other Retirement Plans				1,200.00
Total Personnel Services – Employee Benefits				\$68,636.21
Total 2611 Supervision of Operation and Maintenance of Plant Services – Head of Component				\$171,986.11

General Fund (10)

	<u>Elementary</u>	<u>Secondary</u>	<u>Federal</u>	<u>Total</u>
2620 Operation of Buildings Services				
100 Personnel Services – Salaries				
100 Personnel Services – Salaries				884,764.27
Total Personnel Services – Salaries				\$884,764.27
200 Personnel Services – Employee Benefits				
210 Group Insurance – Contracted Provider				406.38
220 Social Security Contributions				65,340.33
230 PSERS Retirement Contributions				282,441.14
260 Workers' Compensation				5,626.74
270 Group Insurance – Self-Insurance				278,012.46
Total Personnel Services – Employee Benefits				\$631,827.05
400 Purchased Property Services				
410 Cleaning Services				51,584.05
420 Utility Services				140,745.75
430 Repairs and Maintenance Services				272,302.22
440 Rentals				78.79
460 Extermination Services				5,278.42
Total Purchased Property Services				\$469,989.23
500 Other Purchased Services				
523 General Property and Liability Insurance				114,520.00
530 Communications				114,458.07
580 Travel				360.41
Total Other Purchased Services				\$229,338.48
600 Supplies				
610 General Supplies	122,237.05	122,237.05		244,474.10
620 Energy				773,305.23
Total Supplies	\$122,237.05	\$122,237.05		\$1,017,779.33
700 Property				
762 Capitalized Equipment - Replacement				9,900.00
Total Property				\$9,900.00
Total 2620 Operation of Buildings Services	\$122,237.05	\$122,237.05		\$3,243,598.36

LEA : 112671803 Dover Area SD

Printed 11/30/2018 8:05:24 AM

General Fund (10)

	<u>Elementary</u>	<u>Secondary</u>	<u>Federal</u>	<u>Total</u>
2630 Care and Upkeep of Grounds Services				
400 <u>Purchased Property Services</u>				
410 Cleaning Services				23,252.00
430 Repairs and Maintenance Services				4,188.98
Total Purchased Property Services				\$27,440.98
600 <u>Supplies</u>				
610 General Supplies	8,384.05	8,384.05		16,768.10
Total Supplies	\$8,384.05	\$8,384.05		\$16,768.10
800 <u>Other Objects</u>				
810 Dues and Fees				469.23
Total Other Objects				\$469.23
Total 2630 Care and Upkeep of Grounds Services	\$8,384.05	\$8,384.05		\$44,678.31

General Fund (10)

	<u>Elementary</u>	<u>Secondary</u>	<u>Federal</u>	<u>Total</u>
2640 Care and Upkeep of Equipment Services				
100 Personnel Services – Salaries				
100 Personnel Services – Salaries				227,532.50
Total Personnel Services – Salaries				\$227,532.50
200 Personnel Services – Employee Benefits				
210 Group Insurance – Contracted Provider				243.24
220 Social Security Contributions				16,781.76
230 PSERS Retirement Contributions				72,746.50
260 Workers' Compensation				1,422.74
270 Group Insurance – Self-Insurance				69,469.74
Total Personnel Services – Employee Benefits				\$160,663.98
400 Purchased Property Services				
410 Cleaning Services				2,025.34
430 Repairs and Maintenance Services				6,999.99
440 Rentals				213,447.26
Total Purchased Property Services				\$222,472.59
Total 2640 Care and Upkeep of Equipment Services				\$610,669.07

General Fund (10)

	<u>Elementary</u>	<u>Secondary</u>	<u>Federal</u>	<u>Total</u>
2650 Vehicle Operation and Maintenance Services (Other Than Student Transportation Vehicles)				
400 <u>Purchased Property Services</u>				
430 Repairs and Maintenance Services				8,504.84
Total Purchased Property Services				\$8,504.84
500 <u>Other Purchased Services</u>				
522 Automotive Liability Insurance				11,711.00
Total Other Purchased Services				\$11,711.00
600 <u>Supplies</u>				
610 General Supplies	233.58	233.57		467.15
620 Energy				31,431.59
Total Supplies	\$233.58	\$233.57		\$31,898.74
Total 2650 Vehicle Operation and Maintenance Services (Other Than Student Transportation Vehicles)	\$233.58	\$233.57		\$52,114.58

General Fund (10)

	<u>Elementary</u>	<u>Secondary</u>	<u>Federal</u>	<u>Total</u>
2660 Safety and Security Services				
400 Purchased Property Services				
490 Other Purchased Property Services				10,328.78
Total Purchased Property Services				\$10,328.78
600 Supplies				
610 General Supplies	8,320.21	8,320.20		16,640.41
Total Supplies	\$8,320.21	\$8,320.20		\$16,640.41
Total 2660 Safety and Security Services	\$8,320.21	\$8,320.20		\$26,969.19

LEA : 112671803 Dover Area SD

Printed 11/30/2018 8:05:24 AM

General Fund (10)

	<u>Elementary</u>	<u>Secondary</u>	<u>Federal</u>	<u>Total</u>
2700 Student Transportation Services				
100 Personnel Services – Salaries				
100 Personnel Services – Salaries				31,196.84
Total Personnel Services – Salaries				\$31,196.84
200 Personnel Services – Employee Benefits				
210 Group Insurance – Contracted Provider				63.72
220 Social Security Contributions				2,221.94
230 PSERS Retirement Contributions				7,665.02
250 Unemployment Compensation				19.88
260 Workers' Compensation				198.77
270 Group Insurance – Self-Insurance				14,921.79
Total Personnel Services – Employee Benefits				\$25,091.12
300 Purchased Professional and Technical Services				
340 Technical Services				4,859.95
Total Purchased Professional and Technical Services				\$4,859.95
500 Other Purchased Services				
511 Student Transportation Services from Another LEA Within the State				8,072.26
513 Contracted Carriers				2,968,492.32
516 Student Transportation Services From the IU				129,574.11
530 Communications				15,361.60
580 Travel				368.02
Total Other Purchased Services				\$3,121,868.31
600 Supplies				
620 Energy				12,229.38
Total Supplies				\$12,229.38
800 Other Objects				
810 Dues and Fees				94.00
Total Other Objects				\$94.00
Total 2700 Student Transportation Services				\$3,195,339.60

General Fund (10)

2710 Supervision of Student Transportation Services

Elementary

Secondary

Federal

Total

100 Personnel Services – Salaries

100 Personnel Services – Salaries

23,534.09

Total Personnel Services – Salaries

\$23,534.09

200 Personnel Services – Employee Benefits

210 Group Insurance – Contracted Provider

63.72

220 Social Security Contributions

1,635.68

230 PSERS Retirement Contributions

7,665.02

260 Workers' Compensation

149.95

270 Group Insurance – Self-Insurance

14,921.79

Total Personnel Services – Employee Benefits

\$24,436.16

800 Other Objects

810 Dues and Fees

94.00

Total Other Objects

\$94.00

Total 2710 Supervision of Student Transportation Services

\$48,064.25

General Fund (10)

2711 Supervision of Student Transportation Services – Head of Component

Elementary

Secondary

Federal

Total

100 Personnel Services – Salaries

100 Personnel Services – Salaries

23,534.09

Total Personnel Services – Salaries

\$23,534.09

200 Personnel Services – Employee Benefits

210 Group Insurance – Contracted Provider

63.72

220 Social Security Contributions

1,635.68

230 PSERS Retirement Contributions

7,665.02

260 Workers' Compensation

149.95

270 Group Insurance – Self-Insurance

14,921.79

Total Personnel Services – Employee Benefits

\$24,436.16

800 Other Objects

810 Dues and Fees

94.00

Total Other Objects

\$94.00

Total 2711 Supervision of Student Transportation Services – Head of Component

\$48,064.25

LEA : 112671803 Dover Area SD

Printed 11/30/2018 8:05:24 AM

General Fund (10)

2720 Vehicle Operation Services

Elementary

Secondary

Federal

Total

500 Other Purchased Services

511 Student Transportation Services from Another LEA Within the State

8,072.26

513 Contracted Carriers

2,698,893.82

516 Student Transportation Services From the IU

129,574.11

Total Other Purchased Services

\$2,836,540.19

Total 2720 Vehicle Operation Services

\$2,836,540.19

General Fund (10)

2730 Monitoring Services

Elementary

Secondary

Federal

Total

100 Personnel Services – Salaries

100 Personnel Services – Salaries

7,662.75

Total Personnel Services – Salaries

\$7,662.75

200 Personnel Services – Employee Benefits

220 Social Security Contributions

586.26

250 Unemployment Compensation

19.88

260 Workers' Compensation

48.82

Total Personnel Services – Employee Benefits

\$654.96

500 Other Purchased Services

530 Communications

15,361.60

580 Travel

368.02

Total Other Purchased Services

\$15,729.62

Total 2730 Monitoring Services

\$24,047.33

General Fund (10)

2740 Vehicle Servicing and Maintenance Services

Elementary

Secondary

Federal

Total

300 Purchased Professional and Technical Services

340 Technical Services

4,859.95

Total Purchased Professional and Technical Services

\$4,859.95

600 Supplies

620 Energy

12,229.38

Total Supplies

\$12,229.38

Total 2740 Vehicle Servicing and Maintenance Services

\$17,089.33

LEA : 112671803 Dover Area SD

Printed 11/30/2018 8:05:24 AM

General Fund (10)

	<u>Elementary</u>	<u>Secondary</u>	<u>Federal</u>	<u>Total</u>
2750 Nonpublic Transportation				
500 <u>Other Purchased Services</u>				
513 Contracted Carriers				269,598.50
Total Other Purchased Services				\$269,598.50
Total 2750 Nonpublic Transportation				\$269,598.50

General Fund (10)

2800 Support Services – Central

Elementary Secondary Federal Total

100 Personnel Services – Salaries

100 Personnel Services – Salaries 311,405.07

Total Personnel Services – Salaries \$311,405.07

200 Personnel Services – Employee Benefits

210 Group Insurance – Contracted Provider 767.04

220 Social Security Contributions 22,923.24

230 PSERS Retirement Contributions 101,424.84

240 Tuition Reimbursement 16,361.85

260 Workers' Compensation 1,983.66

270 Group Insurance – Self-Insurance 94,010.50

291 Other Retirement Plans 1,200.00

Total Personnel Services – Employee Benefits \$238,671.13

300 Purchased Professional and Technical Services

324 Professional Educational Services – Employee Training and Development Services 21,322.62

330 Other Professional Services 165,292.08

340 Technical Services 8,194.00

390 Other Purchased Professional and Technical Services 225.00

Total Purchased Professional and Technical Services \$195,033.70

400 Purchased Property Services

430 Repairs and Maintenance Services 2,455.00

Total Purchased Property Services \$2,455.00

500 Other Purchased Services

549 Other Advertising/Public Relations 196.81

Total Other Purchased Services \$196.81

600 Supplies

610 General Supplies (6,115.61)

630 Food 9,772.97

650 Supplies & Fees – Technology Related 32,000.00

Total Supplies \$35,657.36

800 Other Objects

810 Dues and Fees 209.00

Total Other Objects \$209.00

Total 2800 Support Services – Central \$783,628.07

General Fund (10)

2810 Planning, Research, Development and Evaluation Services

Elementary

Secondary

Federal

Total

300 Purchased Professional and Technical Services

330 Other Professional Services

140,437.18

Total Purchased Professional and Technical Services

\$140,437.18

400 Purchased Property Services

430 Repairs and Maintenance Services

2,455.00

Total Purchased Property Services

\$2,455.00

600 Supplies

610 General Supplies

(6,174.89)

650 Supplies & Fees – Technology Related

32,000.00

Total Supplies

\$25,825.11

Total 2810 Planning, Research, Development and Evaluation Services

\$168,717.29

General Fund (10)

2830 Staff Services

Elementary Secondary Federal Total

100	<u>Personnel Services – Salaries</u>				
	100 Personnel Services – Salaries				96,340.23
Total Personnel Services – Salaries					\$96,340.23
200	<u>Personnel Services – Employee Benefits</u>				
	210 Group Insurance – Contracted Provider				530.79
	220 Social Security Contributions				7,039.61
	230 PSERS Retirement Contributions				31,378.14
	240 Tuition Reimbursement				16,361.85
	260 Workers' Compensation				613.70
	270 Group Insurance – Self-Insurance				28,928.98
	291 Other Retirement Plans				1,200.00
Total Personnel Services – Employee Benefits					\$86,053.07
300	<u>Purchased Professional and Technical Services</u>				
	324 Professional Educational Services – Employee Training and Development Services				1,145.00
	330 Other Professional Services				24,854.90
	340 Technical Services				8,194.00
	390 Other Purchased Professional and Technical Services				225.00
Total Purchased Professional and Technical Services					\$34,418.90
500	<u>Other Purchased Services</u>				
	549 Other Advertising/Public Relations				196.81
Total Other Purchased Services					\$196.81
600	<u>Supplies</u>				
	610 General Supplies				59.28
	630 Food				9,772.97
Total Supplies					\$9,832.25
800	<u>Other Objects</u>				
	810 Dues and Fees				209.00
Total Other Objects					\$209.00
Total 2830 Staff Services					\$227,050.26

General Fund (10)

	<u>Elementary</u>	<u>Secondary</u>	<u>Federal</u>	<u>Total</u>
2831 Supervision of Staff Services				
100 Personnel Services – Salaries				
100 Personnel Services – Salaries				96,340.23
Total Personnel Services – Salaries				\$96,340.23
200 Personnel Services – Employee Benefits				
210 Group Insurance – Contracted Provider				530.79
220 Social Security Contributions				7,039.61
230 PSERS Retirement Contributions				31,378.14
260 Workers' Compensation				613.70
270 Group Insurance – Self-Insurance				28,928.98
291 Other Retirement Plans				1,200.00
Total Personnel Services – Employee Benefits				\$69,691.22
300 Purchased Professional and Technical Services				
324 Professional Educational Services – Employee Training and Development Services				895.00
330 Other Professional Services				150.00
340 Technical Services				8,194.00
Total Purchased Professional and Technical Services				\$9,239.00
500 Other Purchased Services				
549 Other Advertising/Public Relations				196.81
Total Other Purchased Services				\$196.81
600 Supplies				
610 General Supplies				59.28
Total Supplies				\$59.28
800 Other Objects				
810 Dues and Fees				209.00
Total Other Objects				\$209.00
Total 2831 Supervision of Staff Services				\$175,735.54

General Fund (10)

2832 Recruitment and Placement Services

Elementary

Secondary

Federal

Total

300 Purchased Professional and Technical Services

390 Other Purchased Professional and Technical Services

225.00

Total Purchased Professional and Technical Services

\$225.00

Total 2832 Recruitment and Placement Services

\$225.00

General Fund (10)

	<u>Elementary</u>	<u>Secondary</u>	<u>Federal</u>	<u>Total</u>
2834 Staff Development Services – Non-Instructional, Certified Staff Only				
200 Personnel Services – Employee Benefits				
240 Tuition Reimbursement				13,601.85
Total Personnel Services – Employee Benefits				\$13,601.85
300 Purchased Professional and Technical Services				
330 Other Professional Services				16,415.90
Total Purchased Professional and Technical Services				\$16,415.90
600 Supplies				
630 Food				9,772.97
Total Supplies				\$9,772.97
Total 2834 Staff Development Services – Non-Instructional, Certified Staff Only				\$39,790.72

LEA : 112671803 Dover Area SD

Printed 11/30/2018 8:05:24 AM

General Fund (10)

2835 Health Services

Elementary

Secondary

Federal

Total

300 Purchased Professional and Technical Services

330 Other Professional Services

8,289.00

Total Purchased Professional and Technical Services

\$8,289.00

Total 2835 Health Services

\$8,289.00

General Fund (10)

2836 Staff Development Services – Non-Instructional, Non-Certified Staff Only

Elementary

Secondary

Federal

Total

200 Personnel Services – Employee Benefits

240 Tuition Reimbursement

2,760.00

Total Personnel Services – Employee Benefits

\$2,760.00

300 Purchased Professional and Technical Services

324 Professional Educational Services – Employee Training and Development Services

250.00

Total Purchased Professional and Technical Services

\$250.00

Total 2836 Staff Development Services – Non-Instructional, Non-Certified Staff Only

\$3,010.00

General Fund (10)

2840 Data Processing Services

Elementary

Secondary

Federal

Total

100 Personnel Services – Salaries

100 Personnel Services – Salaries

215,064.84

Total Personnel Services – Salaries

\$215,064.84

200 Personnel Services – Employee Benefits

210 Group Insurance – Contracted Provider

236.25

220 Social Security Contributions

15,883.63

230 PSERS Retirement Contributions

70,046.70

260 Workers' Compensation

1,369.96

270 Group Insurance – Self-Insurance

65,081.52

Total Personnel Services – Employee Benefits

\$152,618.06

300 Purchased Professional and Technical Services

324 Professional Educational Services – Employee Training and Development Services

20,177.62

Total Purchased Professional and Technical Services

\$20,177.62

Total 2840 Data Processing Services

\$387,860.52

LEA : 112671803 Dover Area SD

Printed 11/30/2018 8:05:24 AM

General Fund (10)

2900 Other Support Services

Elementary

Secondary

Federal

Total

500 Other Purchased Services

595 IU Payments By Withholding

26,646.75

Total Other Purchased Services

\$26,646.75

Total 2900 Other Support Services

\$26,646.75

General Fund (10)

2910 Support Services Not Listed Elsewhere In the 2000 Series

Elementary

Secondary

Federal

Total

500 Other Purchased Services

595 IU Payments By Withholding

26,646.75

Total Other Purchased Services

\$26,646.75

Total 2910 Support Services Not Listed Elsewhere In the 2000 Series

\$26,646.75

General Fund (10)

3000 Operation of Non-Instructional Services

Total

100 Personnel Services – Salaries

100 Personnel Services – Salaries 499,091.03

Total Personnel Services – Salaries

\$499,091.03

200 Personnel Services – Employee Benefits

210 Group Insurance – Contracted Provider 389.13

220 Social Security Contributions 37,846.17

230 PSERS Retirement Contributions 159,250.63

250 Unemployment Compensation 6,025.34

260 Workers' Compensation 1,148.87

270 Group Insurance – Self-Insurance 23,411.97

Total Personnel Services – Employee Benefits

\$228,072.11

300 Purchased Professional and Technical Services

324 Professional Educational Services – Employee Training and Development Services 800.00

330 Other Professional Services 11,477.44

340 Technical Services 45,410.00

390 Other Purchased Professional and Technical Services 490.00

Total Purchased Professional and Technical Services

\$58,177.44

400 Purchased Property Services

430 Repairs and Maintenance Services 21,039.63

Total Purchased Property Services

\$21,039.63

500 Other Purchased Services

510 Student Transportation Services 54,103.73

550 Printing and Binding 3,205.00

580 Travel 9,064.59

Total Other Purchased Services

\$66,373.32

600 Supplies

610 General Supplies 146,490.07

630 Food 3,041.95

Total Supplies

\$149,532.02

800 Other Objects

810 Dues and Fees 3,378.88

890 Miscellaneous Expenditures 1,437.23

Total Other Objects

\$4,816.11

Total 3000 Operation of Non-Instructional Services

\$1,027,101.66

General Fund (10)

3200 Student Activities

Elementary Secondary Federal Total

100 Personnel Services – Salaries				
100 Personnel Services – Salaries				499,091.03
Total Personnel Services – Salaries				\$499,091.03
200 Personnel Services – Employee Benefits				
210 Group Insurance – Contracted Provider				389.13
220 Social Security Contributions				37,846.17
230 PSERS Retirement Contributions				159,250.63
250 Unemployment Compensation				6,025.34
260 Workers' Compensation				1,148.87
270 Group Insurance – Self-Insurance				23,411.97
Total Personnel Services – Employee Benefits				\$228,072.11
300 Purchased Professional and Technical Services				
324 Professional Educational Services – Employee Training and Development Services				800.00
330 Other Professional Services				11,477.44
340 Technical Services				45,410.00
390 Other Purchased Professional and Technical Services				490.00
Total Purchased Professional and Technical Services				\$58,177.44
400 Purchased Property Services				
430 Repairs and Maintenance Services				21,039.63
Total Purchased Property Services				\$21,039.63
500 Other Purchased Services				
510 Student Transportation Services				54,103.73
550 Printing and Binding				3,205.00
580 Travel				9,064.59
Total Other Purchased Services				\$66,373.32
600 Supplies				
610 General Supplies				144,154.55
630 Food				1,733.55
Total Supplies				\$145,888.10
800 Other Objects				
810 Dues and Fees				3,378.88
890 Miscellaneous Expenditures				1,437.23
Total Other Objects				\$4,816.11
Total 3200 Student Activities				\$1,023,457.74

LEA : 112671803 Dover Area SD

Printed 11/30/2018 8:05:29 AM

General Fund (10)

3300 Community Services

600 Supplies

610 General Supplies

630 Food

Total Supplies

Total 3300 Community Services

Elementary

Secondary

Federal

Total

2,335.52

2,335.52

1,308.40

1,308.40

\$3,643.92

\$3,643.92

\$3,643.92

\$3,643.92

General Fund (10)

5000 Other Expenditures and Financing Uses

Total

800 Other Objects

830 Interest 1,059,219.92

880 Refunds of Prior Years' Receipts 701.85

Total Other Objects \$1,059,921.77

900 Other Uses of Funds

910 Redemption of Principal 3,771,000.00

932 Capital Reserve Fund Transfers Applicable To Fund 32 2,101,700.00

Total Other Uses of Funds \$5,872,700.00

Total 5000 Other Expenditures and Financing Uses \$6,932,621.77

General Fund (10)

5100 Debt Service / Other Expenditures and Financing Uses	<u>Elementary</u>	<u>Secondary</u>	<u>Federal</u>	<u>Total</u>
800 Other Objects				
830 Interest				1,059,219.92
880 Refunds of Prior Years' Receipts				701.85
Total Other Objects				\$1,059,921.77
900 Other Uses of Funds				
910 Redemption of Principal				3,771,000.00
Total Other Uses of Funds				\$3,771,000.00
Total 5100 Debt Service / Other Expenditures and Financing Uses				\$4,830,921.77

LEA : 112671803 Dover Area SD

Printed 11/30/2018 8:05:32 AM

General Fund (10)

	<u>Elementary</u>	<u>Secondary</u>	<u>Federal</u>	<u>Total</u>
5110 Debt Service				
800 Other Objects				
830 Interest				1,059,219.92
Total Other Objects				\$1,059,219.92
900 Other Uses of Funds				
910 Redemption of Principal				3,771,000.00
Total Other Uses of Funds				\$3,771,000.00
Total 5110 Debt Service				\$4,830,219.92

LEA : 112671803 Dover Area SD

Printed 11/30/2018 8:05:32 AM

General Fund (10)

5130 Refund of Prior Year Revenues / Receipts

Elementary

Secondary

Federal

Total

800 Other Objects

880 Refunds of Prior Years' Receipts

701.85

Total Other Objects

\$701.85

Total 5130 Refund of Prior Year Revenues / Receipts

\$701.85

LEA : 112671803 Dover Area SD

Printed 11/30/2018 8:05:32 AM

General Fund (10)

5200 Interfund Transfers – Out

Elementary

Secondary

Federal

Total

900 Other Uses of Funds

932 Capital Reserve Fund Transfers Applicable To Fund 32

2,101,700.00

Total Other Uses of Funds

\$2,101,700.00

Total 5200 Interfund Transfers – Out

\$2,101,700.00

LEA : 112671803 Dover Area SD

Printed 11/30/2018 8:05:32 AM

General Fund (10)

5230 Capital Projects Fund Transfers

Elementary

Secondary

Federal

Total

900 Other Uses of Funds

932 Capital Reserve Fund Transfers Applicable To Fund 32

2,101,700.00

Total Other Uses of Funds

\$2,101,700.00

Total 5230 Capital Projects Fund Transfers

\$2,101,700.00

LEA : 112671803 Dover Area SD

Printed 11/30/2018 8:05:26 AM

Capital Reserve Fund - § 1431 (32)

2000 Support Services

400 Purchased Property Services

430 Repairs and Maintenance Services

4,140.00

Total Purchased Property Services

\$4,140.00

700 Property

752 Capital Equipment – Original and Additional

42,812.00

762 Capitalized Equipment - Replacement

14,075.20

Total Property

\$56,887.20

Total 2000 Support Services

\$61,027.20

LEA : 112671803 Dover Area SD

Printed 11/30/2018 8:05:26 AM

Capital Reserve Fund - § 1431 (32)

2600 Operation and Maintenance of Plant Services

Elementary

Secondary

Federal

Total

400 Purchased Property Services

430 Repairs and Maintenance Services

4,140.00

Total Purchased Property Services

\$4,140.00

700 Property

752 Capital Equipment – Original and Additional

42,812.00

762 Capitalized Equipment - Replacement

14,075.20

Total Property

\$56,887.20

Total 2600 Operation and Maintenance of Plant Services

\$61,027.20

LEA : 112671803 Dover Area SD

Printed 11/30/2018 8:05:26 AM

Capital Reserve Fund - § 1431 (32)

2620 Operation of Buildings Services

400 Purchased Property Services

430 Repairs and Maintenance Services

Total Purchased Property Services

Total 2620 Operation of Buildings Services

Elementary

Secondary

Federal

Total

4,140.00

\$4,140.00

\$4,140.00

LEA : 112671803 Dover Area SD

Printed 11/30/2018 8:05:26 AM

Capital Reserve Fund - § 1431 (32)

2650 Vehicle Operation and Maintenance Services (Other Than Student Transportation Vehicles)

Elementary

Secondary

Federal

Total

700 Property

752 Capital Equipment – Original and Additional

42,812.00

762 Capitalized Equipment - Replacement

14,075.20

Total Property

\$56,887.20

Total 2650 Vehicle Operation and Maintenance Services (Other Than Student Transportation Vehicles)

\$56,887.20

LEA : 112671803 Dover Area SD

Printed 11/30/2018 8:05:30 AM

Capital Reserve Fund - § 1431 (32)

4000 Facilities Acquisition, Construction and Improvement Services

Total

300 Purchased Professional and Technical Services

330 Other Professional Services

(0.34)

Total Purchased Professional and Technical Services

(\$0.34)

400 Purchased Property Services

430 Repairs and Maintenance Services

500.00

Total Purchased Property Services

\$500.00

Total 4000 Facilities Acquisition, Construction and Improvement Services

\$499.66

LEA : 112671803 Dover Area SD

Printed 11/30/2018 8:05:30 AM

Capital Reserve Fund - § 1431 (32)

4200 Existing Site Improvement Services

Elementary

Secondary

Federal

Total

400 Purchased Property Services

430 Repairs and Maintenance Services

500.00

Total Purchased Property Services

\$500.00

Total 4200 Existing Site Improvement Services

\$500.00

LEA : 112671803 Dover Area SD

Printed 11/30/2018 8:05:30 AM

Capital Reserve Fund - § 1431 (32)

4300 Architecture and Engineering Services / Educational Specifications Development – Original and Additional

Elementary

Secondary

Federal

Total

300 Purchased Professional and Technical Services

330 Other Professional Services

(0.34)

Total Purchased Professional and Technical Services

(\$0.34)

Total 4300 Architecture and Engineering Services / Educational Specifications Development – Original and Additional

(\$0.34)

LEA : 112671803 Dover Area SD

Printed 11/30/2018 8:05:27 AM

Other Capital Projects Fund (39)

2000 Support Services

100 Personnel Services – Salaries

100 Personnel Services – Salaries 8,076.95

Total Personnel Services – Salaries \$8,076.95

200 Personnel Services – Employee Benefits

220 Social Security Contributions 308.94

230 PSERS Retirement Contributions 1,315.33

260 Workers' Compensation 51.45

Total Personnel Services – Employee Benefits \$1,675.72

400 Purchased Property Services

430 Repairs and Maintenance Services 4,250.00

Total Purchased Property Services \$4,250.00

800 Other Objects

810 Dues and Fees 431,205.51

Total Other Objects \$431,205.51

Total 2000 Support Services \$445,208.18

LEA : 112671803 Dover Area SD

Printed 11/30/2018 8:05:27 AM

Other Capital Projects Fund (39)

2300 Support Services – Administration

Elementary

Secondary

Federal

Total

800 Other Objects

810 Dues and Fees

431,205.51

Total Other Objects

\$431,205.51

Total 2300 Support Services – Administration

\$431,205.51

LEA : 112671803 Dover Area SD

Printed 11/30/2018 8:05:27 AM

Other Capital Projects Fund (39)

2390 Other Administration Services

Elementary

Secondary

Federal

Total

800 Other Objects

810 Dues and Fees

431,205.51

Total Other Objects

\$431,205.51

Total 2390 Other Administration Services

\$431,205.51

Other Capital Projects Fund (39)

2600 Operation and Maintenance of Plant Services

Elementary

Secondary

Federal

Total

100 Personnel Services – Salaries

100 Personnel Services – Salaries

8,076.95

Total Personnel Services – Salaries

\$8,076.95

200 Personnel Services – Employee Benefits

220 Social Security Contributions

308.94

230 PSERS Retirement Contributions

1,315.33

260 Workers' Compensation

51.45

Total Personnel Services – Employee Benefits

\$1,675.72

400 Purchased Property Services

430 Repairs and Maintenance Services

4,250.00

Total Purchased Property Services

\$4,250.00

Total 2600 Operation and Maintenance of Plant Services

\$14,002.67

Other Capital Projects Fund (39)

2610 Supervision of Operation and Maintenance of Plant Services

Elementary

Secondary

Federal

Total

100 Personnel Services – Salaries

100 Personnel Services – Salaries

8,076.95

Total Personnel Services – Salaries

\$8,076.95

200 Personnel Services – Employee Benefits

220 Social Security Contributions

308.94

230 PSERS Retirement Contributions

1,315.33

260 Workers' Compensation

51.45

Total Personnel Services – Employee Benefits

\$1,675.72

Total 2610 Supervision of Operation and Maintenance of Plant Services

\$9,752.67

Other Capital Projects Fund (39)

2611 Supervision of Operation and Maintenance of Plant Services – Head of Component

Elementary

Secondary

Federal

Total

100 Personnel Services – Salaries

100 Personnel Services – Salaries

8,076.95

Total Personnel Services – Salaries

\$8,076.95

200 Personnel Services – Employee Benefits

220 Social Security Contributions

308.94

230 PSERS Retirement Contributions

1,315.33

260 Workers' Compensation

51.45

Total Personnel Services – Employee Benefits

\$1,675.72

Total 2611 Supervision of Operation and Maintenance of Plant Services – Head of Component

\$9,752.67

LEA : 112671803 Dover Area SD

Printed 11/30/2018 8:05:27 AM

Other Capital Projects Fund (39)

2630 Care and Upkeep of Grounds Services

Elementary

Secondary

Federal

Total

400 Purchased Property Services

430 Repairs and Maintenance Services

4,250.00

Total Purchased Property Services

\$4,250.00

Total 2630 Care and Upkeep of Grounds Services

\$4,250.00

LEA : 112671803 Dover Area SD

Printed 11/30/2018 8:05:31 AM

Other Capital Projects Fund (39)

4000 Facilities Acquisition, Construction and Improvement Services

Total

300 Purchased Professional and Technical Services

330 Other Professional Services

3,610,777.46

Total Purchased Professional and Technical Services

\$3,610,777.46

Total 4000 Facilities Acquisition, Construction and Improvement Services

\$3,610,777.46

LEA : 112671803 Dover Area SD

Printed 11/30/2018 8:05:31 AM

Other Capital Projects Fund (39)

4300 Architecture and Engineering Services / Educational Specifications Development – Original and Additional

Elementary

Secondary

Federal

Total

300 Purchased Professional and Technical Services

330 Other Professional Services

3,610,777.46

Total Purchased Professional and Technical Services

\$3,610,777.46

Total 4300 Architecture and Engineering Services / Educational Specifications Development – Original and Additional

\$3,610,777.46

	<u>General Fund(10)</u>	<u>Public Purpose Trust(27)</u>	<u>Other Compt Approved (28)</u>	<u>Athletic / Activity(29)</u>	<u>Capital Reserve (690. 1850)(31)</u>
1000 Instruction					
1100 Regular Programs - Elementary / Secondary	23,933,997.80				
1200 Special Programs - Elementary / Secondary	8,934,818.97				
1300 Vocational Education	3,172,255.76				
1400 Other Instructional Programs - Elementary / Secondary	375,958.27				
1500 Nonpublic School Programs	511.00				
1700 Higher Education Programs for Secondary Students	12,500.00				
Total Instruction	\$36,430,041.80				
2000 Support Services					
2100 Support Services - Students	1,721,016.38				
2200 Support Services - Instructional Staff	3,347,074.34				
2300 Support Services - Administration	2,231,401.39				
2400 Support Services - Pupil Health	792,039.35				
2500 Support Services - Business	806,586.55				
2600 Operation and Maintenance of Plant Services	4,150,015.62				
2700 Student Transportation Services	3,195,339.60				
2800 Support Services - Central	783,628.07				
2900 Other Support Services	26,646.75				
Total Support Services	\$17,053,748.05				
3000 Operation of Non-Instructional Services					
3200 Student Activities	1,023,457.74				
3300 Community Services	3,643.92				
Total Operation of Non-Instructional Services	\$1,027,101.66				
4000 Facilities Acquisition, Construction and Improvement Services					
4200 Existing Site Improvement Services					
4300 Architecture and Engineering Services / Educational Specifications Development - Original and Additional					
Total Facilities Acquisition, Construction and Improvement Services					
5000 Other Expenditures and Financing Uses					
5100 Debt Service / Other Expenditures and Financing Uses	4,830,921.77				
5200 Interfund Transfers - Out	2,101,700.00				
Total Other Expenditures and Financing Uses	\$6,932,621.77				
TOTAL ACTUAL EXPENDITURES & OTHER FINANCING USES	\$61,443,513.28				

	<u>Capital Reserve (1431)(32)</u>	<u>Other Capital Projects Fund(39)</u>	<u>Debt Service(40)</u>	<u>Permanent(90)</u>	<u>Total</u>
1000 Instruction					
1100 Regular Programs - Elementary / Secondary					23,933,997.80
1200 Special Programs - Elementary / Secondary					8,934,818.97
1300 Vocational Education					3,172,255.76
1400 Other Instructional Programs - Elementary / Secondary					375,958.27
1500 Nonpublic School Programs					511.00
1700 Higher Education Programs for Secondary Students					12,500.00
Total Instruction					\$36,430,041.80
2000 Support Services					
2100 Support Services - Students					1,721,016.38
2200 Support Services - Instructional Staff					3,347,074.34
2300 Support Services - Administration		431,205.51			2,662,606.90
2400 Support Services - Pupil Health					792,039.35
2500 Support Services - Business					806,586.55
2600 Operation and Maintenance of Plant Services	61,027.20	14,002.67			4,225,045.49
2700 Student Transportation Services					3,195,339.60
2800 Support Services - Central					783,628.07
2900 Other Support Services					26,646.75
Total Support Services	\$61,027.20	\$445,208.18			\$17,559,983.43
3000 Operation of Non-Instructional Services					
3200 Student Activities					1,023,457.74
3300 Community Services					3,643.92
Total Operation of Non-Instructional Services					\$1,027,101.66
4000 Facilities Acquisition, Construction and Improvement Services					
4200 Existing Site Improvement Services	500.00				500.00
4300 Architecture and Engineering Services / Educational Specifications Development - Original and Additional	(0.34)	3,610,777.46			3,610,777.12
Total Facilities Acquisition, Construction and Improvement Services	\$499.66	\$3,610,777.46			\$3,611,277.12
5000 Other Expenditures and Financing Uses					
5100 Debt Service / Other Expenditures and Financing Uses					4,830,921.77
5200 Interfund Transfers - Out					2,101,700.00
Total Other Expenditures and Financing Uses					\$6,932,621.77
TOTAL ACTUAL EXPENDITURES & OTHER FINANCING USES	\$61,526.86	\$4,055,985.64			\$65,561,025.78

LEA : 112671803 Dover Area SD

Printed 11/30/2018 8:05:39 AM

PSERS Salary Data (Salary Data should relate to the General Fund only)

Amount Description	Amount
Total Salary Base for salaries subject to PSERS withholding	27,335,534.06
Total Federally Funded salaries subject to PSERS withholding	1,018,778.59
	<hr/>

Title I Expenditure Data

Amount Description	Amount
Expenditures Funded with Current Title I Funds	620,281.00
Expenditures Funded with Carry over Title I Funds	
	<hr/>
Total Title I Expenditure Data	\$620,281.00
	<hr/>

Benefits for Staff Relative to Collective Bargaining Agreements

	OBJECT	COVERED	NOT COVERED	TOTAL
10 General Fund				
	211 Medical Insurance			
	212 Dental Insurance			
	215 Eye Care Insurance			
	216 Prescription Insurance			
	271 Self-Insurance Medical Benefits	383,178.00	110,580.00	493,758.00
	272 Self-Insurance Dental Benefits	14,999.00	4,638.00	19,637.00
	275 Self-Insurance Eye Care Benefits			
	276 Self-Insurance Prescription Benefits			
	FUND TOTAL	\$398,177.00	\$115,218.00	\$513,395.00
50 Enterprise Fund				
	211 Medical Insurance			
	212 Dental Insurance			
	215 Eye Care Insurance			
	216 Prescription Insurance			
	271 Self-Insurance Medical Benefits	9,030.00		9,030.00
	272 Self-Insurance Dental Benefits	324.00		324.00
	275 Self-Insurance Eye Care Benefits			
	276 Self-Insurance Prescription Benefits			
	FUND TOTAL	\$9,354.00		\$9,354.00
60 Internal Service Fund	No Self Insurance data to report			
	211 Medical Insurance			
	212 Dental Insurance			
	215 Eye Care Insurance			
	216 Prescription Insurance			
	271 Self-Insurance Medical Benefits			
	272 Self-Insurance Dental Benefits			
	275 Self-Insurance Eye Care Benefits			
	276 Self-Insurance Prescription Benefits			
	FUND TOTAL			
Total of All Funds		\$407,531.00	\$115,218.00	\$522,749.00

LEA : 112671803 Dover Area SD

Printed 11/30/2018 8:05:42 AM

Function	Special Education (Prior Year)	Nonspecial Education (Prior Year)	Total (Prior Year)	Special Education (Current Year)	Nonspecial Education (Current Year)	Total (Current Year)
2120 Guidance Services	203,428.44	946,813.12	1,150,241.56	225,408.30	908,414.83	1,133,823.13
2140 Psychological Services	368,519.93		368,519.93	421,391.31		421,391.31
2150 Speech Pathology and Audiology Services						
2160 Social Work Services						
2260 Instruction and Curriculum Development Services		722,673.46	722,673.46	638,834.51	159,708.63	798,543.14
2350 Legal and Accounting Services		98,447.08	98,447.08	6,115.40	77,966.65	84,082.05
2420 Medical Services	213,598.82	490,209.18	703,808.00	141,337.42	650,701.93	792,039.35
2440 Nursing Services						
2700 Student Transportation Services	744,317.54	1,850,912.85	2,595,230.39	859,351.97	2,335,987.63	3,195,339.60
Total	\$1,529,864.73	\$4,109,055.69	\$5,638,920.42	\$2,292,438.91	\$4,132,779.67	\$6,425,218.58

(PRINCIPAL AMOUNTS ONLY)

GOVERNMENTAL FUNDS/ ACTIVITIES

	Short-Term Borrowing	General Obligation Bonds/Notes	Authority Building Obligations	Other Long-Term Debt	Other Post-Employment Benefits (OPEB)	Compensated Absences	Net Pension Liability	Total
1. Debt at Beginning of Fiscal Year		40,006,000.00		507,795.00	7,118,674.00	1,228,059.00	87,532,000.00	136,392,528.00
2. Additional Debt Incurred During Year		29,205,000.00		70,840.00	67,739.00	21,026.00		29,364,605.00
3. Retirements and Repayments		3,771,000.00		356,725.00		37,724.00	1,361,000.00	5,526,449.00
4. Debt at End of Fiscal Year		65,440,000.00		221,910.00	7,186,413.00	1,211,361.00	86,171,000.00	160,230,684.00
5. Accreted Interest at End Of Fiscal Year								
6. Total Debt and Accreted Interest		65,440,000.00		221,910.00	7,186,413.00	1,211,361.00	86,171,000.00	160,230,684.00
7. Current Portion P&I - Due within 1 year		5,945,829.00		169,673.00		33,020.00		6,148,522.00
8. Interest Paid during current fiscal year		1,059,222.00						1,059,222.00

(PRINCIPAL AMOUNTS ONLY)

PROPRIETARY FUNDS

	Short-Term Borrowing	General Obligation Bonds/Notes	Authority Building Obligations	Other Long-Term Debt	Other Post-Employment Benefits (OPEB)	Compensated Absences	Net Pension Liability	Total
1. Debt at Beginning of Fiscal Year					94,424.00	47,175.00	1,769,000.00	1,910,599.00
2. Additional Debt Incurred During Year					1,476.00			1,476.00
3. Retirements and Repayments						27,225.00	29,000.00	56,225.00
4. Debt at End of Fiscal Year					95,900.00	19,950.00	1,740,000.00	1,855,850.00
5. Accreted Interest at End Of Fiscal Year								
6. Total Debt and Accreted Interest					95,900.00	19,950.00	1,740,000.00	1,855,850.00
7. Current Portion P&I - Due within 1 year								
8. Interest Paid during current fiscal year								

Total Principal and Interest Payments Made by Your School - All Funds

Function	Fund		Principal (910)	Principal (920)	Interest (830)	Total (Principal +Interest)	Misc Other Uses (990)
5110	10	General Fund	3,771,000.00		1,059,219.92	4,830,219.92	
5110	20	Special Revenue Funds					
5110	30	Capital Projects Funds					
5110	40	Debt Service Fund					
5110	90	Permanent Fund					
5120	10	General Fund					
5120	20	Special Revenue Funds					
5120	30	Capital Projects Funds					
5120	40	Debt Service Fund					

Total Debt Payments - Governmental Funds			\$3,771,000.00		\$1,059,219.92	\$4,830,219.92	
---	--	--	-----------------------	--	-----------------------	-----------------------	--

Function	Fund		Principal (910)	Principal (920)	Interest (830)	Total (Principal +Interest)
5110	50	Enterprise Fund				
5110	60	Internal Service Fund				
5120	50	Enterprise Fund				
5120	60	Internal Service Fund				

Total Debt Payments - Proprietary Funds						
--	--	--	--	--	--	--

LEA : 112671803 Dover Area SD

Printed 11/30/2018 8:05:43 AM

Debt Details
Governmental Funds/ Activities

Debt Category	Debt Issue Date (MM/YYYY)	Principal Amounts Only			Debt at End of Fiscal Year	Current Portion Due Within One Year (Principal and Interest)	Interest Paid During Fiscal Year
		Debt at Beginning of Fiscal Year	Additions	Reductions / Repayments			
General Obligation Bonds/Notes – CIB	06/2018		29,205,000.00		29,205,000.00	1,086,867.00	
General Obligation Bonds/Notes – CIB	11/2016	9,355,000.00		1,705,000.00	7,650,000.00	2,707,888.00	246,132.00
General Obligation Bonds/Notes – CIB	07/2015	9,020,000.00		550,000.00	8,470,000.00	787,926.00	248,050.00
General Obligation Bonds/Notes – CIB	08/2015	7,410,000.00		290,000.00	7,120,000.00	525,800.00	203,776.00
General Obligation Bonds/Notes – CIB	02/2013	715,000.00		715,000.00			21,450.00
General Obligation Bonds/Notes – CIB	12/2008	13,506,000.00		511,000.00	12,995,000.00	837,348.00	339,814.00
Extended Term Financing Agreements		507,795.00	70,840.00	356,725.00	221,910.00	169,673.00	
Compensated Absences		1,228,059.00	21,026.00	37,724.00	1,211,361.00	33,020.00	
Other Post-Employment Benefits (OPEB)		7,118,674.00	67,739.00		7,186,413.00		
Net Pension Liability		87,532,000.00		1,361,000.00	86,171,000.00		
Totals for Debt Entered:		\$136,392,528.00	\$29,364,605.00	\$5,526,449.00	\$160,230,684.00	\$6,148,522.00	\$1,059,222.00

Bond Details
Proprietary Funds

Debt Category	Debt Issue Date (MM/YYYY)	Principal Amounts Only			Debt at End of Fiscal Year	Current Portion Due Within One Year (Principal and Interest)	Interest Paid During Fiscal Year
		Debt at Beginning of Fiscal Year	Additions	Reductions / Repayments			
Compensated Absences		47,175.00		27,225.00	19,950.00		
Other Post-Employment Benefits (OPEB)		94,424.00	1,476.00		95,900.00		
Net Pension Liability		1,769,000.00		29,000.00	1,740,000.00		
Totals for Debt Entered:		\$1,910,599.00	\$1,476.00	\$56,225.00	\$1,855,850.00		

General Fund (10)

Section 1: Tuition/Purchased Services as Reported within Expenditure Detail

	Amount
Tuition Reported in General Fund Expenditures 1000-560	3,137,780.32
Purchased Services in General Fund Expenditures 1000-594 and 1000-597	368.39
Section 1 Total	\$3,138,148.71

Section 2: Tuition Paid to Institution Types During Fiscal Year

	Tuition Paid For Nonspecial Education	Tuition Paid For Special Education	Total
1 1306 Institutions			
2 Institutionalized Children's Programs			
3 Juveniles Incarcerated in Adult Facilities	11,359.98		11,359.98
4 Residential Treatment Facilities	53,484.34	13,556.76	67,041.10
5 Other Local Education Agencies	107,398.95	10,723.21	118,122.16
6 Brick and Mortar Charter Schools	111,519.12	111,033.74	222,552.86
7 Cyber Charter Schools	779,712.89	296,542.56	1,076,255.45
8 Career and Technology Centers	1,047,398.42	118,163.52	1,165,561.94
9 Approved Private Schools			
10 PA Chartered Schools for the Deaf and Blind			
11 Private Residential Rehabilitative Institutions	52,215.62	29,084.90	81,300.52
12 Juvenile Detention Centers			
13 Special Program Jointures	12,500.00		12,500.00
14 Other Tuition Not Included Elsewhere In This Section	383,454.70		383,454.70
Section 2 Total	\$2,559,044.02	\$579,104.69	\$3,138,148.71

- 1 . Student Transportation Services for Educational Field Trips

- 2 . Student Transportation Services for Student Activities 7,275.71

- 3 . Rental of Vehicles for Student Transportation Services

- 4 . Capital Reserve Funds

Include only district-owned transportation expenditures paid from State or local money.
 DO NOT include federal expenditures or payments to contract service providers.
 Contracted transportation services should not be recorded on this schedule.

LEA : 112671803 Dover Area SD

Printed 11/30/2018 8:05:48 AM

Food Service / Cafeteria Operations Fund (51)

3000 Operation of Non-Instructional Services

Total

100 Personnel Services – Salaries

100 Personnel Services – Salaries 521,320.00

Total Personnel Services – Salaries \$521,320.00

200 Personnel Services – Employee Benefits

210 Group Insurance – Contracted Provider 534.00

220 Social Security Contributions 40,716.00

230 PSERS Retirement Contributions 213,321.00

260 Workers’ Compensation 3,494.00

270 Group Insurance – Self-Insurance 152,819.00

280 Other Post-Employment Benefits (OPEB) (2,084.00)

291 Other Retirement Plans 1,200.00

Total Personnel Services – Employee Benefits \$410,000.00

300 Purchased Professional and Technical Services

390 Other Purchased Professional and Technical Services 808.00

Total Purchased Professional and Technical Services \$808.00

400 Purchased Property Services

430 Repairs and Maintenance Services 3,385.00

Total Purchased Property Services \$3,385.00

600 Supplies

610 General Supplies 51,872.00

630 Food 614,464.00

Total Supplies \$666,336.00

700 Property

740 Depreciation 9,885.00

Total Property \$9,885.00

800 Other Objects

810 Dues and Fees 10,179.00

Total Other Objects \$10,179.00

Total 3000 Operation of Non-Instructional Services \$1,621,913.00

Food Service / Cafeteria Operations Fund (51)

	<u>Elementary</u>	<u>Secondary</u>	<u>Federal</u>	<u>Total</u>
3100 Food Services				
100 Personnel Services – Salaries				
100 Personnel Services – Salaries			521,320.00	521,320.00
Total Personnel Services – Salaries			\$521,320.00	\$521,320.00
200 Personnel Services – Employee Benefits				
210 Group Insurance – Contracted Provider			534.00	534.00
220 Social Security Contributions			40,716.00	40,716.00
230 PSERS Retirement Contributions			213,321.00	213,321.00
260 Workers' Compensation			3,494.00	3,494.00
270 Group Insurance – Self-Insurance			8,910.00	152,819.00
280 Other Post-Employment Benefits (OPEB)				(2,084.00)
291 Other Retirement Plans				1,200.00
Total Personnel Services – Employee Benefits			\$266,975.00	\$410,000.00
300 Purchased Professional and Technical Services				
390 Other Purchased Professional and Technical Services				808.00
Total Purchased Professional and Technical Services				\$808.00
400 Purchased Property Services				
430 Repairs and Maintenance Services				3,385.00
Total Purchased Property Services				\$3,385.00
600 Supplies				
610 General Supplies				51,872.00
630 Food			86,953.00	614,464.00
Total Supplies			\$86,953.00	\$666,336.00
700 Property				
740 Depreciation				9,885.00
Total Property				\$9,885.00
800 Other Objects				
810 Dues and Fees				10,179.00
Total Other Objects				\$10,179.00
Total 3100 Food Services			\$875,248.00	\$1,621,913.00

	<u>Food Service(51)</u>	<u>Child Care Operations(52)</u>	<u>Other Enterprise(58)</u>	<u>Internal Service(60)</u>	<u>Total</u>
3000 <u>Operation of Non-Instructional Services</u>					
3100 Food Services	1,621,913.00				1,621,913.00
Total Operation of Non-Instructional Services	\$1,621,913.00				\$1,621,913.00
TOTAL ACTUAL EXPENDITURES & OTHER FINANCING USES	\$1,621,913.00				\$1,621,913.00