


Annual Financial Report Accuracy Certification Statement

For Fiscal Year Ending
6/30/2016

Pennsylvania Department of Education
&
Office of Comptroller Operations

PDE-2056: Intermediate Unit
PDE-2057: School District, AVTS/CTC, Charter School,
and Special Program Jointure

CERTIFICATION: By signing this page I agree that the electronic data submitted is a complete and accurate statement of the financial operations and status of the local education agency for the fiscal year. It has been prepared in accordance with generally accepted accounting principles and established Commonwealth of PA reporting guidelines.



Chief School Administrator Signature

11/21/16
Date



Board Secretary Signature

11/21/16
Date

Jennifer Benko

Contact Person

(717)292-3671 Ext :80202

Contact Person Telephone Number

jbenko@doversd.org

Contact Person E-mail Address

(717)292-6024

Contact Person Fax Number

Audit Certification
Annual Financial Report:
 For Fiscal Year Ending **6/30/2016**
(Pursuant to PA School Code Section 218(b))

LEA Name : Dover Area SD
 AUN Number : 112671803
 County : York

Audit Certification Due: 12/31/2016

This certification is applicable to:

- Orig. Annual Financial Report submitted to
 Comptroller Operations: 11/21/16
Date
- Annual Financial Report revisions submitted on: _____
Date

Auditing Firm: *Bayer & Ritter LLC*
Camp Hill, PA

Auditor Contact Name: *Matthew Wildasin*
Auditor Phone: *717-761-7910*
Auditor E-mail: *mwildasin@epabr.com*

CERTIFICATION: By signing this page I agree that the financial statements of the school have been properly audited as noted above pursuant to Article XXIV, and in the auditor's professional opinion, the Annual Financial Report (PDE-2057) submitted on the date referenced is materially consistent with the audited financial statements.

Chief School Administrator

J. Benko

 Signature

11/21/16
 Date

Board Secretary

J. Benko

 Signature

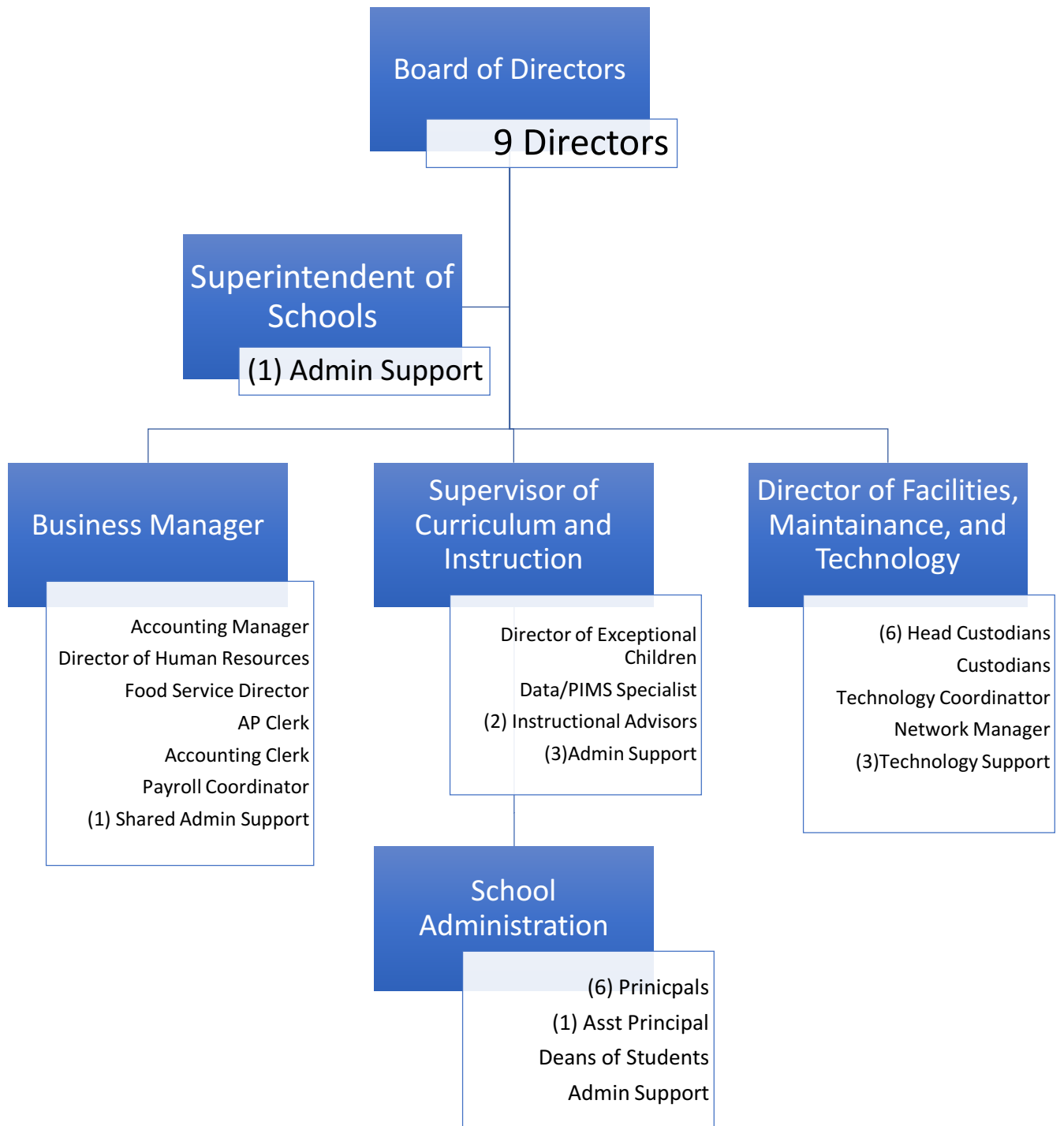
11/21/16
 Date

Jennifer Benko

(717)292-3671 Ext :80202

jbenko@doversd.org

(717)292-6024



<u>Val Number</u>	<u>Description</u>	<u>Justification</u>
16015	<p>REP Fund 51: Object 300 is greater than object 500. Purchased services for food service contracted services should be coded to objects 571 and 572. Correct or enter a justification.</p> <p>REP Fund 51 Object 300: \$3,289.00 REP Fund 51 Object 500: \$0.00</p>	<p>Our District does not contract with a food service management company. The expenditures coded to object 300 for services were for things such as interpreter services for one of our employees.</p>
30330	<p>Revenue Detail - Fund 10: Miscellaneous ARRA Revenue 8799 has been reported. Please explain what comprises the amount recorded.</p> <p>Rev Detail 8799: \$1,623.50</p>	<p>These were additional Race to the Top funds that we received in 2015-2016.</p>
30501	<p>Revenue Detail: AFR amount must equal or exceed PDE FAI System amount.</p> <p>7311, AFR Rev Detail: 1113860.50 7311, PDE FAI System: \$1,124,419.79</p>	<p>The difference of \$10,559.29 received in January 2016 was booked as revenue and a receivable in our FY 2014-2015 and therefore, when we received the funds in 2015-2016 we booked as cash and credited our state receivable.</p>
42420	<p>Expenditure Detail: Total current year 2700-513 expenditure varies from prior year by 10%. Correct the data or enter a justification.</p> <p>2700-513, AFR Exp Detail: \$2,813,779.37 2700-513, PY AFR Amount: \$2,281,787.87</p>	<p>In 2015-2016, the District began transporting almost 100% of the special needs students instead of having the IU provide the transportation.</p>
50280	<p>SOIN: Current Year AFR amount must equal Prior Year AFR amount.</p> <p>SOIN, Beg Bal, Gen Obl Bnds: \$46,608,000.00 PY Ending Bal, Gen Obl Bnds: \$0.00</p>	<p>In prior years, the District's General Obligation Bonds were reported on this schedule as Other Liabilities. These are now correctly reported as General Obligation Bonds.</p>
50400	<p>SESS - 2120 Guidance Services: SESS Schedule amounts for Special Education vary from prior year by 40% or more. Correct the data or enter a justification.</p> <p>SESS Schedule 2120: \$216,854.25 Prior Year SESS Schedule 2120: \$0.00</p>	<p>In 2015-2016, the District brought Learning Support and Autistic Services back under it's umbrella. In prior year, these services were operated through the Intermediate Unit.</p>
50410	<p>SESS - 2140 Psychological Services: SESS Schedule amounts for Special Education vary from prior year by 40% or more. Correct the data or enter a justification.</p> <p>SESS Schedule 2140: \$393,051.09 Prior Year SESS Schedule 2140: \$211,504.32</p>	<p>In 2015-2016, the District brought Learning Support and Autistic Services back under it's umbrella. In prior year, these services were operated through the Intermediate Unit.</p>

50440 SESS - 2260 Instruction and Curriculum Development Services: SESS Schedule amounts for Special Education vary from prior year by 40% or more. Correct the data or enter a justification.

SESS Schedule 2260: \$1,520.83
Prior Year SESS Schedule 2260: \$0.00

In 2015-2016, the District brought Learning Support and Autistic Services back under it's umbrella. In prior year, these services were operated through the Intermediate Unit.

50460 SESS - 2420 Medical Services: SESS Schedule amounts for Special Education vary from prior year by 40% or more. Correct the data or enter a justification.

SESS Schedule 2420: \$66,561.67
Prior Year SESS Schedule 2420: \$0.00

In 2015-2016, the District brought Learning Support and Autistic Services back under it's umbrella. In prior year, these services were operated through the Intermediate Unit.

Amounts Expressed in Whole Dollars	<u>General Fund</u> <u>(10)</u>	<u>Public Purpose Trust</u> <u>(27)</u>	<u>Other Compt Approved</u> <u>(28)</u>	<u>Athletic / Activity</u> <u>(29)</u>	<u>Capital Reserve (690.</u> <u>1850)</u> <u>(31)</u>
Assets And Deferred Outflows Of Resources					
Assets					
0100 Cash and Cash Equivalents	3,281,864				
0110 Investments	12,187,226				
0120 Taxes Receivable	2,075,599				
0130 Due From Other Funds	1,329				
0141 Due From Other Governments					
0142 State Revenue Receivable	2,402,270				
0143 Federal Revenue Receivable	192,899				
0145 Other Intergovernmental Revenue Receivable	374,923				
0146 Due from Primary Government					
0147 Due from Component Unit					
0150 Other Receivables	16,832				
0170 Inventories					
0180 Prepaid Expenses (Expenditures)	3,397,900				
0190 Other Current Assets					
Total Assets	\$23,930,842				
0910 Deferred Outflows of Resources					
Total Assets And Deferred Outflows Of Resources	\$23,930,842				

Amounts Expressed in Whole Dollars

	<u>Capital Reserve (1431)</u> <u>(32)</u>	<u>Other Capital Projects</u> <u>Fund</u> <u>(39)</u>	<u>Debt Service</u> <u>(40)</u>	<u>Permanent</u> <u>(90)</u>	<u>Total Governmental</u> <u>Funds</u>
Assets And Deferred Outflows Of Resources					
Assets					
0100 Cash and Cash Equivalents		947,598			4,229,462
0110 Investments		8,745,000			20,932,226
0120 Taxes Receivable					2,075,599
0130 Due From Other Funds					1,329
0141 Due From Other Governments					
0142 State Revenue Receivable					2,402,270
0143 Federal Revenue Receivable					192,899
0145 Other Intergovernmental Revenue Receivable					374,923
0146 Due from Primary Government					
0147 Due from Component Unit					
0150 Other Receivables					16,832
0170 Inventories					
0180 Prepaid Expenses (Expenditures)					3,397,900
0190 Other Current Assets					
Total Assets		\$9,692,598			\$33,623,440
0910 Deferred Outflows of Resources					
Total Assets And Deferred Outflows Of Resources		\$9,692,598			\$33,623,440

Amounts Expressed in Whole Dollars	<u>General Fund</u> <u>(10)</u>	<u>Public Purpose Trust</u> <u>(27)</u>	<u>Other Compt Approved</u> <u>(28)</u>	<u>Athletic / Activity</u> <u>(29)</u>	<u>Capital Reserve (690.</u> <u>1850)</u> <u>(31)</u>
Liabilities And Deferred Inflows Of Resources And Fund Balances					
Liabilities					
0400 Due to Other Funds					
0411 Due to Other Governments					
0412 Due to Primary Government					
0413 Due to Component Unit					
0420 Accounts Payable	548,058				
0430 Contracts Payable					
0440 Current Portion of Long-Term Debt					
0450 Short-Term Payables					
0461 Accrued Salaries and Benefits	2,572,876				
0462 Payroll Deductions and Withholding	3,428,229				
0480 Unearned Revenues	50,846				
0490 Other Current Liabilities					
Total Liabilities	\$6,600,009				
0950 Deferred Inflows of Resources	1,029,870				
Fund Balances					
0810 Nonspendable Fund Balance	3,397,900				
0820 Restricted Fund Balance					
0830 Committed Fund Balance	7,714,390				
0840 Assigned Fund Balance	1,099,360				
0850 Unassigned Fund Balance	4,089,313				
Total Fund Balances	\$16,300,963				
Total Liabilities, Deferred Inflows Of Resources And Fund Balances	\$23,930,842				

Amounts Expressed in Whole Dollars

	<u>Capital Reserve (1431)</u> <u>(32)</u>	<u>Other Capital Projects</u> <u>Fund</u> <u>(39)</u>	<u>Debt Service</u> <u>(40)</u>	<u>Permanent</u> <u>(90)</u>	<u>Total Governmental</u> <u>Funds</u>
Liabilities And Deferred Inflows Of Resources And Fund Balances					
Liabilities					
0400 Due to Other Funds					
0411 Due to Other Governments					
0412 Due to Primary Government					
0413 Due to Component Unit					
0420 Accounts Payable	17,938				565,996
0430 Contracts Payable					
0440 Current Portion of Long-Term Debt					
0450 Short-Term Payables					
0461 Accrued Salaries and Benefits					2,572,876
0462 Payroll Deductions and Withholding					3,428,229
0480 Unearned Revenues					50,846
0490 Other Current Liabilities					
Total Liabilities	\$17,938				\$6,617,947
0950 Deferred Inflows of Resources					1,029,870
Fund Balances					
0810 Nonspendable Fund Balance					3,397,900
0820 Restricted Fund Balance	9,674,660				9,674,660
0830 Committed Fund Balance					7,714,390
0840 Assigned Fund Balance					1,099,360
0850 Unassigned Fund Balance					4,089,313
Total Fund Balances	\$9,674,660				\$25,975,623
Total Liabilities, Deferred Inflows Of Resources And Fund Balances	\$9,692,598				\$33,623,440

Amounts Expressed in Whole Dollars	<u>General Fund</u> <u>(10)</u>	<u>Public Purpose Trust</u> <u>(27)</u>	<u>Other Compt Approved</u> <u>(28)</u>	<u>Athletic / Activity</u> <u>(29)</u>	<u>Capital Reserve (690.</u> <u>1850)</u> <u>(31)</u>
Revenues					
6000 Revenue from Local Sources	35,165,124				
7000 Revenue from State Sources	21,437,109				
8000 Revenue from Federal Sources	702,725				
Total Revenues	\$57,304,958				
Expenditures					
1000 Instruction	35,175,366				
2000 Support Services	15,830,004				
3000 Operation of Non-Instructional Services	984,141				
4000 Facilities Acquisition, Construction and Improvement Services					
5110 Debt Service	4,471,949				
5130 Refund of Prior Year Revenues / Receipts	42,131				
5140 Short-Term Borrowing – Interest and Costs					
Total Expenditures	\$56,503,591				
Excess (Deficiency) Of Revenues Over Expenditures	\$801,367				
Other Financing Sources (Uses)					
9110 Face Value of Bonds Issued					
9120 Proceeds from Refunding of Bonds	17,830,000				
9130 Bond Premiums					
9200 Proceeds from Extended-Term Financing					
9300 Interfund Transfers - IN					
9400 Sale of or Compensation for Loss of Fixed Assets					
9710 Transfers from Component Units					
9720 Transfers from Primary Governments					
9910 Other Financing Sources Not Listed in the 9000 Series					
9990 Insurance Recoveries					
5120 Debt Service – Refunded Bonds	17,665,508				
5150 Bond Discounts					
5200 Interfund Transfers – Out	4,034,000				
5300 Transfers Out to Component Units/Primary Governments					
Total Other Financing Sources (Uses)	(\$3,869,508)				

Amounts Expressed in Whole Dollars	<u>Capital Reserve (1431)</u> <u>(32)</u>	<u>Other Capital Projects</u> <u>Fund</u> <u>(39)</u>	<u>Debt Service</u> <u>(40)</u>	<u>Permanent</u> <u>(90)</u>	<u>Total Governmental</u> <u>Funds</u>
Revenues					
6000 Revenue from Local Sources	14,914				35,180,038
7000 Revenue from State Sources					21,437,109
8000 Revenue from Federal Sources					702,725
Total Revenues	\$14,914				\$57,319,872
Expenditures					
1000 Instruction					35,175,366
2000 Support Services	1,353,216				17,183,220
3000 Operation of Non-Instructional Services					984,141
4000 Facilities Acquisition, Construction and Improvement Services	19,777				19,777
5110 Debt Service					4,471,949
5130 Refund of Prior Year Revenues / Receipts					42,131
5140 Short-Term Borrowing – Interest and Costs					
Total Expenditures	\$1,372,993				\$57,876,584
Excess (Deficiency) Of Revenues Over Expenditures	(\$1,358,079)				(\$556,712)
Other Financing Sources (Uses)					
9110 Face Value of Bonds Issued					
9120 Proceeds from Refunding of Bonds					17,830,000
9130 Bond Premiums					
9200 Proceeds from Extended-Term Financing					
9300 Interfund Transfers - IN	4,034,000				4,034,000
9400 Sale of or Compensation for Loss of Fixed Assets					
9710 Transfers from Component Units					
9720 Transfers from Primary Governments					
9910 Other Financing Sources Not Listed in the 9000 Series					
9990 Insurance Recoveries					
5120 Debt Service – Refunded Bonds					17,665,508
5150 Bond Discounts					
5200 Interfund Transfers – Out					4,034,000
5300 Transfers Out to Component Units/Primary Governments					
Total Other Financing Sources (Uses)	\$4,034,000				\$164,492

Amounts Expressed in Whole Dollars	<u>General Fund</u> <u>(10)</u>	<u>Public Purpose Trust</u> <u>(27)</u>	<u>Other Compt Approved</u> <u>(28)</u>	<u>Athletic / Activity</u> <u>(29)</u>	<u>Capital Reserve</u> <u>(690.</u> <u>1850)</u> <u>(31)</u>
Special And Extraordinary Items					
9920 Special Items – Gains					
9930 Extraordinary Items – Gains					
5520 Special Items – Losses					
5530 Extraordinary Items – Losses					
Net Change In Fund Balances	(\$3,068,141)				
Fund Balance					
0001 Fund Balance - Beginning of Fiscal Year	19,369,104				
Fund Balance - End Of Year	\$16,300,963				

Amounts Expressed in Whole Dollars	<u>Capital Reserve (1431)</u> <u>(32)</u>	<u>Other Capital Projects</u> <u>Fund</u> <u>(39)</u>	<u>Debt Service</u> <u>(40)</u>	<u>Permanent</u> <u>(90)</u>	<u>Total Governmental</u> <u>Funds</u>
Special And Extraordinary Items					
9920 Special Items – Gains					
9930 Extraordinary Items – Gains					
5520 Special Items – Losses					
5530 Extraordinary Items – Losses					
Net Change In Fund Balances	\$2,675,921				(\$392,220)
Fund Balance					
0001 Fund Balance - Beginning of Fiscal Year	6,998,739				26,367,843
Fund Balance - End Of Year	\$9,674,660				\$25,975,623

Amounts Expressed in Whole Dollars	<u>Food Service</u> <u>(51)</u>	<u>Child Care</u> <u>Operations</u> <u>(52)</u>	<u>Other Enterprise</u> <u>(58)</u>	<u>TOTAL</u>	<u>Internal Service</u> <u>(60)</u>
Assets And Deferred Outflows Of Resources					
Current Assets					
0100 Cash and Cash Equivalents	155,093			155,093	
0110 Investments					
0130 Due From Other Funds					
0141 Due From Other Governments					
0142 State Revenue Receivable	6,409			6,409	
0143 Federal Revenue Receivable	99,806			99,806	
0146 Due from Primary Government					
0147 Due from Component Unit					
0150 Other Receivables	(618)			(618)	
0170 Inventories	5,883			5,883	
0180 Prepaid Expenses (Expenditures)					
0190 Other Current Assets	18,241			18,241	
Total Current Assets	\$284,814			\$284,814	
Noncurrent Assets					
0211 Land					
0212 Site Improvements (Net)					
0220 Buildings and Building Improvements (Net)					
0230 Machinery, Equipment and Furniture (Net)					
0250 Construction in Progress					
0260 Long Term Prepayments					
0290 Other Noncurrent Assets					
Total Noncurrent Assets					
0910 Deferred Outflows of Resources	166,000			166,000	
Total Assets And Deferred Outflows Of Resources	\$450,814			\$450,814	

Amounts Expressed in Whole Dollars	<u>Food Service</u> <u>(51)</u>	<u>Child Care</u> <u>Operations</u> <u>(52)</u>	<u>Other Enterprise</u> <u>(58)</u>	<u>TOTAL</u>	<u>Internal Service</u> <u>(60)</u>
Liabilities And Deferred Inflows Of Resources And Net Position					
Current Liabilities					
0400 Due to Other Funds	1,329			1,329	
0411 Due to Other Governments					
0413 Due to Component Unit					
0420 Accounts Payable	467			467	
0430 Contracts Payable					
0440 Current Portion of Long-Term Debt					
0450 Short-Term Payables					
0461 Accrued Salaries and Benefits	710			710	
0462 Payroll Deductions and Withholding					
0480 Unearned Revenues	32,511			32,511	
0490 Other Current Liabilities					
Total Current Liabilities	\$35,017			\$35,017	
Noncurrent Liabilities					
0510 Bonds Payable					
0520 Extended-Term Financing Agreements Payable					
0530 Lease-Purchase Obligations					
0540 Accumulated Compensated Absences	40,835			40,835	
0550 Authority Lease Obligations					
0560 Other Post-Employment Benefits (OPEB)					
0570 Net Pension Liability	1,493,000			1,493,000	
0599 Other Long-Term Liabilities					
Total Noncurrent Liabilities	\$1,533,835			\$1,533,835	
Total Liabilities	\$1,568,852			\$1,568,852	
0950 Deferred Inflows of Resources	9,000			9,000	
Net Position					
0791 Invested in Capital Assets, Net of Related Debt	18,241			18,241	
0008 Restricted Net Position (0792 – 0798)					
0799 Unrestricted Net Position	(1,145,279)			(1,145,279)	
Total Net Position	(\$1,127,038)			(\$1,127,038)	
Total Liabilities And Deferred Inflows Of Resources And Net Position	\$450,814			\$450,814	

Amounts Expressed in Whole Dollars	<u>Food Service</u> <u>(51)</u>	<u>Child Care Operations</u> <u>(52)</u>	<u>Other Enterprise</u> <u>(58)</u>	<u>TOTAL</u>	<u>Internal Service</u> <u>(60)</u>
Operating Revenues					
6600 Food Service Revenue	645,098			645,098	
0071 Charges for Services					
0072 Other Operating Revenue					
Total Operating Revenues	\$645,098			\$645,098	
Operating Expenses					
100 Personnel Services – Salaries	490,203			490,203	
200 Personnel Services – Employee Benefits	339,945			339,945	
300 Purchased Professional and Technical Services	3,289			3,289	
400 Purchased Property Services	4,874			4,874	
500 Other Purchased Services					
600 Supplies	664,865			664,865	
740 Depreciation	3,401			3,401	
810 Dues and Fees					
890 Miscellaneous Expenditures	8,686			8,686	
Total Operating Expenses	\$1,515,263			\$1,515,263	
Operating Income (Loss)	(\$870,165)			(\$870,165)	
Non Operating Revenues (Expenses)					
6500 Earnings on Investments	371			371	
6920 Contributions and Donations from Private Sources					
6930 Gains or Losses on Sale of Fixed Assets					
6991 Refunds of a Prior Year Expenditure					
7000 Revenue from State Sources	127,993			127,993	
8000 Revenue from Federal Sources	837,063			837,063	
820 Claims and Judgments Against the LEA					
830 Interest					
TOTAL Non Operating Revenues (Expenses)	\$965,427			\$965,427	
Income (Loss) Before Contributions And Transfers	\$95,262			\$95,262	

Amounts Expressed in Whole Dollars	<u>Food Service</u> <u>(51)</u>	<u>Child Care Operations</u> <u>(52)</u>	<u>Other Enterprise</u> <u>(58)</u>	<u>TOTAL</u>	<u>Internal Service</u> <u>(60)</u>
Contributions, Transfers, and Special and Extraordinary Items					
5200 Interfund Transfers – Out					
5300 Transfers Out to Component Units/Primary Governments					
5520 Special Items – Losses					
5530 Extraordinary Items – Losses					
9300 Interfund Transfers - IN					
9500 Capital Contributions					
9700 Transfers IN From Component Units/Primary Governments					
9920 Special Items – Gains					
9930 Extraordinary Items – Gains					
Change In Net Position	\$95,262			\$95,262	
0002 Net Position - Beginning of Fiscal Year	(1,222,300)			(1,222,300)	
0003 Accounting Changes / Residual Equity Transfers					
Net Position - End Of Year	(\$1,127,038)			(\$1,127,038)	

LEA : 112671803 Dover Area SD

Printed 11/21/2016 12:09:30 PM

Amounts Expressed in Whole Dollars	<u>Food Service</u> <u>(51)</u>	<u>Child Care Operations</u> <u>(52)</u>	<u>Other Enterprise</u> <u>(58)</u>	<u>TOTAL</u>	<u>Internal Service(60)</u>
Cash Flows From Operating Activities					
0011 Cash Receipts From Users	645,862			645,862	
0012 Cash Receipts From Assessments Made to Other Funds					
0013 Cash Receipts From Earnings on Investments					
0014 Cash Receipts From Other Operating Revenue					
0015 Cash Payments To Employees For Services	898,752			898,752	
0016 Cash Payments For Insurance Claims					
0017 Cash Payments To Suppliers For Goods and Services	594,791			594,791	
0018 Cash Payments For Other Operating Expenses	8,686			8,686	
Net Cash Provided By (Used For) Operating Activities	(\$856,367)			(\$856,367)	
Cash Flows From Non-Capital Financing Activities					
0021 Receipts From Local Sources - 6000					
0022 Receipts From State Sources - 7000	122,402			122,402	
0023 Receipts From Federal Sources -8000	674,034			674,034	
0024 Notes and Loans Received (Repaid)					
0025 Interest Paid on Notes/Loans - 5100-830					
0026 Operating Transfers In (Out)/Residual Equity Trans					
0027 Operating Transfers In (Out) Primary Government / Comp Unit					
0028 Receipts From Refund of Prior Year Expenditures - 6991					
0029 Special and Extraordinary Gains (losses)					
Net Cash Prov By (Used for) Non-Capital Financing Activities	\$796,436			\$796,436	
Cash Flows From Capital and Related Financing Activities					
0031 Payments For Fac Acq, Const, and Imp - 4000					
0032 Gain / (Loss) on Sale of Fixed Assets - 6930					
0033 Proceeds From Extended Term Financing - 9200					
0034 Principal Paid on Financing Agreements					
0035 Interest Paid on Financing Agreements - 5100-830					
0036 (Inc) Dec in Contributed Capital	(20,268)			(20,268)	
Net Cash Prov By (Used for) Capital and Related Financing Activities	(\$20,268)			(\$20,268)	
Cash Flows From Investing Activities					
0041 Earnings on Investments - 6500	371			371	
0042 Purchase of Inv Securities / Deposits to Inv Pools					
0043 Receipts From Investment Pool Withdrawals					
0044 Proceeds from Sale and Maturity of Inv Securities					
0045 Loans Received (Paid)					
Net Cash Prov By (Used for) Investing Activities	\$371			\$371	

	<u>Food Service</u> <u>(51)</u>	<u>Child Care Operations</u> <u>(52)</u>	<u>Other Enterprise</u> <u>(58)</u>	<u>TOTAL</u>	<u>Internal Service</u> <u>(60)</u>
Net Increase (Decrease) in Cash Flows	(79,828)			(79,828)	
0004 Cash and Cash Equivalents Beginning of Year	234,921			234,921	
Cash and Cash Equivalents at Year End	\$155,093			\$155,093	
<hr/>					
Reconciliation of Operating Income (Loss) To Net Cash Provided by (Used For) Operating Activities					
0005 Operating Income (Loss) per REP	(870,165)			(870,165)	
Adjustments					
0051 Depreciation and Net Amortization	3,401			3,401	
0052 Provision for Uncollectible Accounts					
0053 Other Adjustments	74,857			74,857	
Effect of Changes in Assets, Liabilities, Deferred Outflows and Deferred Inflows					
0054 (Inc) Dec In Accounts Receivable (0120-0150)	(2,485)			(2,485)	
0055 Advances to Other Funds (0160)	(108,858)			(108,858)	
0056 (Inc) Dec in Inventories (0170)	3,179			3,179	
0057 (Inc) Dec in Prepaid Expenses (0180)					
0058 (Inc) Dec in Other Current or Noncurrent Assets					
0064 Deferred Outflows (0910)	(25,000)			(25,000)	
0059 Inc (Dec) in Accounts Payable (0400-0450)	201			201	
0060 Inc (Dec) in Accrued Salaries/Benefits (0461)	475			475	
0065 Inc (Dec) in Net Pension Liabilities (0570)	151,000			151,000	
0066 Inc (Dec) in Other Postemp Benefit Oblig (0560)	1,779			1,779	
0061 Inc (Dec) in Payroll Deductions/Withholding (0462)					
0062 Inc (Dec) in Unearned Revenue (0480)	3,249			3,249	
0063 Inc (Dec) in Other Current or Noncurrent Liabilities					
0067 Deferred Inflows (0950)	(88,000)			(88,000)	
Total Adjustments	\$13,798			\$13,798	
Cash Provided By (Used for) Total	(\$856,367)			(\$856,367)	

COMBINED STATEMENT OF CASH FLOWS
SCHEDULE OF NONCASH INVESTING, CAPITAL, AND FINANCING ACTIVITIES

Explanation of Transaction and Balance Sheet Effect	Amount
Total	

LEA : 112671803 Dover Area SD

Printed 11/21/2016 12:09:30 PM

Amounts Expressed in Whole Dollars	<u>Private Purpose Trust</u> <u>(71)</u>	<u>Investment Trust</u> <u>(72)</u>	<u>Pension Trust</u> <u>(73)</u>	<u>Activity</u> <u>(81)</u>
Assets And Deferred Outflows Of Resources				
Assets				
0100 Cash and Cash Equivalents				71,502
0110 Investments				
0130 Due From Other Funds				
0147 Due from Component Unit				
0150 Other Receivables				470
0170 Inventories				
0180 Prepaid Expenses (Expenditures)				
0190 Other Current Assets				
0220 Buildings and Building Improvements (Net)				
0230 Machinery, Equipment and Furniture (Net)				
Total Assets				\$71,972
0910 Deferred Outflows of Resources				
Total Assets And Deferred Outflows Of Resources				\$71,972

LEA : 112671803 Dover Area SD

Printed 11/21/2016 12:09:30 PM

Amounts Expressed in Whole Dollars	<u>Other Agency</u> <u>(89)</u>	<u>Discrete Component Units</u> <u>(98)</u>	<u>Discrete Component Units</u> <u>(99)</u>	<u>Total Fiduciary Funds</u>
Assets And Deferred Outflows Of Resources				
Assets				
0100 Cash and Cash Equivalents				71,502
0110 Investments				
0130 Due From Other Funds				
0147 Due from Component Unit				
0150 Other Receivables				470
0170 Inventories				
0180 Prepaid Expenses (Expenditures)				
0190 Other Current Assets				
0220 Buildings and Building Improvements (Net)				
0230 Machinery, Equipment and Furniture (Net)				
Total Assets				\$71,972
0910 Deferred Outflows of Resources				
Total Assets And Deferred Outflows Of Resources				\$71,972

LEA : 112671803 Dover Area SD

Printed 11/21/2016 12:09:30 PM

Amounts Expressed in Whole Dollars	<u>Private Purpose Trust</u> (71)	<u>Investment Trust</u> (72)	<u>Pension Trust</u> (73)	<u>Activity</u> (81)
Liabilities, Deferred Inflows Of Resources And Net Position				
Liabilities				
0400 Due to Other Funds				
0411 Due to Other Governments				
0412 Due to Primary Government				
0413 Due to Component Unit				
0420 Accounts Payable				
0430 Contracts Payable				
0450 Short-Term Payables				
0461 Accrued Salaries and Benefits				
0462 Payroll Deductions and Withholding				
0480 Unearned Revenues				
0490 Other Current Liabilities				71,972
Total Liabilities				\$71,972
0950 Deferred Inflows of Resources				
Net Position				
0791 Invested in Capital Assets, Net of Related Debt				
0009 Restricted Net Position (0792 – 0798)				
0799 Unrestricted Net Position				
Total Net Position				
Total Liabilities, Deferred Inflows Of Resources And Net Position				\$71,972

LEA : 112671803 Dover Area SD

Printed 11/21/2016 12:09:30 PM

Amounts Expressed in Whole Dollars	<u>Other Agency</u> (89)	<u>Discrete Component Units</u> (98)	<u>Discrete Component Units</u> (99)	<u>Total Fiduciary Funds</u>
Liabilities, Deferred Inflows Of Resources And Net Position				
Liabilities				
0400 Due to Other Funds				
0411 Due to Other Governments				
0412 Due to Primary Government				
0413 Due to Component Unit				
0420 Accounts Payable				
0430 Contracts Payable				
0450 Short-Term Payables				
0461 Accrued Salaries and Benefits				
0462 Payroll Deductions and Withholding				
0480 Unearned Revenues				
0490 Other Current Liabilities				71,972
Total Liabilities				\$71,972
0950 Deferred Inflows of Resources				
Net Position				
0791 Invested in Capital Assets, Net of Related Debt				
0009 Restricted Net Position (0792 – 0798)				
0799 Unrestricted Net Position				
Total Net Position				
Total Liabilities, Deferred Inflows Of Resources And Net Position				\$71,972

	<u>Revenue Reported In Current Year</u>	<u>Current Year Tax Accrual</u>	<u>Prior Year Tax Accrual</u>	<u>Taxes Collected In Current Year</u>
<u>Revenue from Local Sources</u>				
6111 Current Real Estate Taxes	26,955,479.00			26,955,479.00
6112 Interim Real Estate Taxes	198,559.29			198,559.29
6113 Public Utility Realty Taxes	38,512.31			38,512.31
6120 Current Per Capita Taxes, Section 679	65,654.50			65,654.50
6141 Current Act 511 Per Capita Taxes	65,654.50			65,654.50
6151 Current Act 511 Earned Income Taxes	5,004,676.99			5,004,676.99
6153 Current Act 511 Real Estate Transfer Taxes	445,193.25			445,193.25
6411 Delinquent Real Estate Taxes	955,369.95			955,369.95
6420 Delinquent Per Capita Taxes, Section 679	32,634.68			32,634.68
6431 Delinquent Act 1 Earned Income Taxes	132,172.21			132,172.21
6500 Earnings on Investments	264,140.72			
6700 Revenues from LEA Activities	170,993.65			
6831 Federal Revenue Received from Other Pennsylvania Public LEAs	24,501.13			
6832 Federal IDEA Revenue Received as Pass Through	673,408.00			
6910 Rentals	18,569.98			
6920 Contributions and Donations from Private Sources	30,600.00			
6942 Summer School Tuition	4,250.00			
6944 Receipts from Other LEAs in Pennsylvania - Education	40,027.25			
6991 Refunds of a Prior Year Expenditure	17,042.47			
6992 Energy Efficiency Revenues and Incentives	8,220.66			
6999 Other Revenues Not Specified Above	19,463.41			
TOTAL Revenue from Local Sources	\$35,165,123.95			\$33,893,906.68

**Revenue Reported
In Current Year**

Revenue from State Sources

7110 Basic Education Funding	11,038,710.06		
7160 Tuition for Orphans Subsidy	67,837.94		
7220 Vocational Education	124,381.48		
7250 Migratory Children	80.00		
7271 Special Education funds for School-Aged Pupils	1,943,977.73		
7311 Pupil Transportation Subsidy	1,113,860.50		
7312 Nonpublic and Charter School Pupil Transportation Subsidy	51,205.00		
7320 Rental and Sinking Fund Payments / Building Reimbursement Subsidy	809,360.50		
7340 State Property Tax Reduction Allocation	1,278,865.58		
7360 Safe Schools	24,768.00		
7505 Ready to Learn Block Grant	560,822.00		
7810 State Share of Social Security and Medicare Taxes	980,806.72		
7820 State Share of Retirement Contributions	3,442,433.28		
TOTAL Revenue from State Sources	\$21,437,108.79		

**Revenue Reported
In Current Year**

Revenue from Federal Sources

8514 NCLB, Title I - Improving the Academic Achievement of the Disadvantaged	456,384.56		
8515 NCLB, Title II - Preparing, Training and Recruiting High Quality Teachers and Principals	42,456.17		
8690 Other Restricted Federal Grants-in-Aid Through the Commonwealth of PA	12,702.71		
8799 ARRA - Miscellaneous Revenue	1,623.50		
8810 School-Based Access Medicaid Reimbursement Program (SBAP) Reimbursements (Access)	163,243.01		
8820 Medical Assistance Reimbursement for Administrative Claiming (Quarterly) Program	26,315.21		
TOTAL Revenue from Federal Sources	\$702,725.16		

**Revenue Reported
In Current Year**

Other Financing Sources

9120 Proceeds from Refunding of Bonds	17,830,000.00	
TOTAL Other Financing Sources	\$17,830,000.00	
TOTAL FROM ALL SOURCES	\$75,134,957.90	\$33,893,906.68

Revenue from Local Sources	35,165,123.95
Revenue from State Sources	21,437,108.79
Revenue from Federal Sources	702,725.16
Other Financing Sources	17,830,000.00
TOTAL FROM ALL SOURCES	\$75,134,957.90

General Fund (10)

	<u>Total</u>
1000 Instruction	
100 Personnel Services – Salaries	
100 Personnel Services – Salaries	17,554,115.23
Total Personnel Services – Salaries	\$17,554,115.23
200 Personnel Services – Employee Benefits	
210 Group Insurance – Contracted Provider	15,441.59
220 Social Security Contributions	1,307,953.25
230 PSERS Retirement Contributions	4,524,382.62
240 Tuition Reimbursement	193,956.11
250 Unemployment Compensation	12,877.70
260 Workers' Compensation	85,760.84
270 Group Insurance – Self-Insurance	4,337,503.61
290 Other Current Employee Benefits	84,673.64
Total Personnel Services – Employee Benefits	\$10,562,549.36
300 Purchased Professional and Technical Services	
322 Professional Educational Services – Ius	1,993,476.28
323 Professional Educational Services – Other Educational Agencies	999,411.25
330 Other Professional Services	28,876.32
Total Purchased Professional and Technical Services	\$3,021,763.85
400 Purchased Property Services	
430 Repairs and Maintenance Services	2,539.88
Total Purchased Property Services	\$2,539.88
500 Other Purchased Services	
530 Communications	600.52
561 Tuition To Other School Districts Within the State	608,014.98
562 Tuition To Pennsylvania Charter Schools	1,488,786.70
564 Tuition To Career and Technology Centers	1,277,053.24
566 Tuition To Institutions of Higher Education and Technical Institutes	40,500.00
568 Tuition To Private Residential Rehabilitative Institutions (PRRI) [In-State] and Detention Centers	6,606.93
580 Travel	6,617.23
594 IU Payment By Withholding for Institutionalized Children's Programs – Special Classes	746.60
Total Other Purchased Services	\$3,428,926.20
600 Supplies	
610 General Supplies	226,053.58
630 Food	2,738.38
640 Books and Periodicals	285,772.58
Total Supplies	\$514,564.54
700 Property	
750 Equipment – Original and Additional	54,408.42
760 Equipment – Replacement	19,992.16
Total Property	\$74,400.58
800 Other Objects	
810 Dues and Fees	12,506.20

LEA : 112671803 Dover Area SD

Printed 11/21/2016 12:09:34 PM

General Fund (10)

1000 Instruction

Total

800 Other Objects

890 Miscellaneous Expenditures

4,000.00

Total Other Objects

\$16,506.20

Total 1000 Instruction

\$35,175,365.84

General Fund (10)

1100 Regular Programs – Elementary / Secondary

	<u>Elementary</u>	<u>Secondary</u>	<u>Federal</u>	<u>Total</u>
100 Personnel Services – Salaries				
100 Personnel Services – Salaries	7,380,601.09	5,522,372.87	851,694.08	13,754,668.04
Total Personnel Services – Salaries	\$7,380,601.09	\$5,522,372.87	\$851,694.08	\$13,754,668.04
200 Personnel Services – Employee Benefits				
210 Group Insurance – Contracted Provider	6,575.59	4,776.88	205.41	11,557.88
220 Social Security Contributions	592,827.56	411,502.72	21,608.11	1,025,938.39
230 PSERS Retirement Contributions	2,072,803.79	1,433,062.04	37,641.90	3,543,507.73
240 Tuition Reimbursement	118,670.73	64,997.80		183,668.53
250 Unemployment Compensation	100.11	1,161.30		1,261.41
260 Workers' Compensation	37,081.14	25,786.71	1,852.73	64,720.58
270 Group Insurance – Self-Insurance	1,978,001.75	1,299,722.82	64,761.77	3,342,486.34
290 Other Current Employee Benefits	59,280.00	6,673.64		65,953.64
Total Personnel Services – Employee Benefits	\$4,865,340.67	\$3,247,683.91	\$126,069.92	\$8,239,094.50
300 Purchased Professional and Technical Services				
322 Professional Educational Services – Ius		4,000.00	287.15	4,287.15
323 Professional Educational Services – Other Educational Agencies		407,230.25		407,230.25
330 Other Professional Services	3,676.57	679.75	4,000.00	8,356.32
Total Purchased Professional and Technical Services	\$3,676.57	\$411,910.00	\$4,287.15	\$419,873.72
500 Other Purchased Services				
530 Communications		600.52		600.52
561 Tuition To Other School Districts Within the State	244,074.95	236,134.01		480,208.96
562 Tuition To Pennsylvania Charter Schools	663,289.75	825,496.95		1,488,786.70
580 Travel	462.84	418.31		881.15
Total Other Purchased Services	\$907,827.54	\$1,062,649.79		\$1,970,477.33
600 Supplies				
610 General Supplies	62,818.28	65,718.61	86.01	128,622.90
630 Food		453.39		453.39
640 Books and Periodicals	6,933.07	167,742.47	48,166.33	222,841.87
Total Supplies	\$69,751.35	\$233,914.47	\$48,252.34	\$351,918.16
700 Property				
750 Equipment – Original and Additional	1,417.95	14,965.68		16,383.63
760 Equipment – Replacement		1,193.63		1,193.63
Total Property	\$1,417.95	\$16,159.31		\$17,577.26
Total 1100 Regular Programs – Elementary / Secondary	\$13,228,615.17	\$10,494,690.35	\$1,030,303.49	\$24,753,609.01

General Fund (10)

1110 Regular Programs

	<u>Elementary</u>	<u>Secondary</u>	<u>Federal</u>	<u>Total</u>
100 Personnel Services – Salaries				
100 Personnel Services – Salaries	7,380,601.09	5,522,372.87	851,694.08	13,754,668.04
Total Personnel Services – Salaries	\$7,380,601.09	\$5,522,372.87	\$851,694.08	\$13,754,668.04
200 Personnel Services – Employee Benefits				
210 Group Insurance – Contracted Provider	6,575.59	4,776.88	205.41	11,557.88
220 Social Security Contributions	592,827.56	411,502.72	21,608.11	1,025,938.39
230 PSERS Retirement Contributions	2,072,803.79	1,433,062.04	37,641.90	3,543,507.73
240 Tuition Reimbursement	118,670.73	64,997.80		183,668.53
250 Unemployment Compensation	100.11	1,161.30		1,261.41
260 Workers' Compensation	37,081.14	25,786.71	1,852.73	64,720.58
270 Group Insurance – Self-Insurance	1,978,001.75	1,299,722.82	64,761.77	3,342,486.34
290 Other Current Employee Benefits	59,280.00	6,673.64		65,953.64
Total Personnel Services – Employee Benefits	\$4,865,340.67	\$3,247,683.91	\$126,069.92	\$8,239,094.50
300 Purchased Professional and Technical Services				
322 Professional Educational Services – Ius		4,000.00	287.15	4,287.15
323 Professional Educational Services – Other Educational Agencies		407,230.25		407,230.25
330 Other Professional Services	3,676.57	679.75	4,000.00	8,356.32
Total Purchased Professional and Technical Services	\$3,676.57	\$411,910.00	\$4,287.15	\$419,873.72
500 Other Purchased Services				
530 Communications		600.52		600.52
561 Tuition To Other School Districts Within the State	244,074.95	236,134.01		480,208.96
562 Tuition To Pennsylvania Charter Schools	663,289.75	825,496.95		1,488,786.70
580 Travel	462.84	418.31		881.15
Total Other Purchased Services	\$907,827.54	\$1,062,649.79		\$1,970,477.33
600 Supplies				
610 General Supplies	62,818.28	65,718.61	86.01	128,622.90
630 Food		453.39		453.39
640 Books and Periodicals	6,933.07	167,742.47	48,166.33	222,841.87
Total Supplies	\$69,751.35	\$233,914.47	\$48,252.34	\$351,918.16
700 Property				
750 Equipment – Original and Additional	1,417.95	14,965.68		16,383.63
760 Equipment – Replacement		1,193.63		1,193.63
Total Property	\$1,417.95	\$16,159.31		\$17,577.26
Total 1110 Regular Programs	\$13,228,615.17	\$10,494,690.35	\$1,030,303.49	\$24,753,609.01

General Fund (10)

1200 Special Programs – Elementary / Secondary

	<u>Elementary</u>	<u>Secondary</u>	<u>Federal</u>	<u>Total</u>
100 Personnel Services – Salaries				
100 Personnel Services – Salaries	1,406,013.20	1,124,617.51		2,530,630.71
Total Personnel Services – Salaries	\$1,406,013.20	\$1,124,617.51		\$2,530,630.71
200 Personnel Services – Employee Benefits				
210 Group Insurance – Contracted Provider	1,331.68	1,109.51		2,441.19
220 Social Security Contributions	103,983.25	83,751.37		187,734.62
230 PSERS Retirement Contributions	361,006.90	292,046.59		653,053.49
240 Tuition Reimbursement	1,825.00			1,825.00
250 Unemployment Compensation	9.96	(1,154.41)		(1,144.45)
260 Workers' Compensation	8,370.47	6,745.69		15,116.16
270 Group Insurance – Self-Insurance	355,971.88	334,255.47		690,227.35
290 Other Current Employee Benefits	18,720.00			18,720.00
Total Personnel Services – Employee Benefits	\$851,219.14	\$716,754.22		\$1,567,973.36
300 Purchased Professional and Technical Services				
322 Professional Educational Services – Ius	610,428.14	846,882.99	531,878.00	1,989,189.13
323 Professional Educational Services – Other Educational Agencies		68,631.00		68,631.00
330 Other Professional Services	180.00	1,775.00		1,955.00
Total Purchased Professional and Technical Services	\$610,608.14	\$917,288.99	\$531,878.00	\$2,059,775.13
500 Other Purchased Services				
561 Tuition To Other School Districts Within the State		108,223.02		108,223.02
580 Travel	102.80	48.76		151.56
594 IU Payment By Withholding for Institutionalized Children's Programs – Special Classes		746.60		746.60
Total Other Purchased Services	\$102.80	\$109,018.38		\$109,121.18
600 Supplies				
610 General Supplies	2,234.32	3,790.73		6,025.05
640 Books and Periodicals	21,064.62	36,538.12		57,602.74
Total Supplies	\$23,298.94	\$40,328.85		\$63,627.79
700 Property				
750 Equipment – Original and Additional	12,594.97	2,674.39		15,269.36
Total Property	\$12,594.97	\$2,674.39		\$15,269.36
Total 1200 Special Programs – Elementary / Secondary	\$2,903,837.19	\$2,910,682.34	\$531,878.00	\$6,346,397.53

General Fund (10)

1210 Life Skills Support

	<u>Elementary</u>	<u>Secondary</u>	<u>Federal</u>	<u>Total</u>
100 Personnel Services – Salaries				
100 Personnel Services – Salaries	173,404.94	175,380.59		348,785.53
Total Personnel Services – Salaries	\$173,404.94	\$175,380.59		\$348,785.53
200 Personnel Services – Employee Benefits				
210 Group Insurance – Contracted Provider	130.83	97.75		228.58
220 Social Security Contributions	12,799.45	13,182.36		25,981.81
230 PSERS Retirement Contributions	44,807.91	45,318.94		90,126.85
260 Workers' Compensation	873.54	883.09		1,756.63
270 Group Insurance – Self-Insurance	61,590.00	32,865.00		94,455.00
Total Personnel Services – Employee Benefits	\$120,201.73	\$92,347.14		\$212,548.87
300 Purchased Professional and Technical Services				
322 Professional Educational Services – lus	(10,122.49)	169,142.34		159,019.85
330 Other Professional Services		1,500.00		1,500.00
Total Purchased Professional and Technical Services	(\$10,122.49)	\$170,642.34		\$160,519.85
600 Supplies				
610 General Supplies	431.28	3,212.23		3,643.51
640 Books and Periodicals	5,904.49	36,538.12		42,442.61
Total Supplies	\$6,335.77	\$39,750.35		\$46,086.12
700 Property				
750 Equipment – Original and Additional	5,234.79	2,207.39		7,442.18
Total Property	\$5,234.79	\$2,207.39		\$7,442.18
Total 1210 Life Skills Support	\$295,054.74	\$480,327.81		\$775,382.55

General Fund (10)

1220 Sensory Support

	<u>Elementary</u>	<u>Secondary</u>	<u>Federal</u>	<u>Total</u>
300 <u>Purchased Professional and Technical Services</u>				
322 Professional Educational Services – Ius	194,095.36	76,146.83	200,000.00	470,242.19
Total Purchased Professional and Technical Services	\$194,095.36	\$76,146.83	\$200,000.00	\$470,242.19
600 <u>Supplies</u>				
610 General Supplies	199.00			199.00
Total Supplies	\$199.00			\$199.00
700 <u>Property</u>				
750 Equipment – Original and Additional	2,470.00	467.00		2,937.00
Total Property	\$2,470.00	\$467.00		\$2,937.00
Total 1220 Sensory Support	\$196,764.36	\$76,613.83	\$200,000.00	\$473,378.19

General Fund (10)

1230 Emotional Support

	<u>Elementary</u>	<u>Secondary</u>	<u>Federal</u>	<u>Total</u>
100 Personnel Services – Salaries				
100 Personnel Services – Salaries	138,023.99			138,023.99
Total Personnel Services – Salaries	\$138,023.99			\$138,023.99
200 Personnel Services – Employee Benefits				
210 Group Insurance – Contracted Provider	138.70			138.70
220 Social Security Contributions	10,274.38			10,274.38
230 PSERS Retirement Contributions	35,665.35			35,665.35
260 Workers' Compensation	701.66			701.66
270 Group Insurance – Self-Insurance	36,742.00			36,742.00
Total Personnel Services – Employee Benefits	\$83,522.09			\$83,522.09
300 Purchased Professional and Technical Services				
322 Professional Educational Services – lus	145,496.32	390,361.08	331,878.00	867,735.40
Total Purchased Professional and Technical Services	\$145,496.32	\$390,361.08	\$331,878.00	\$867,735.40
600 Supplies				
610 General Supplies	1,259.54	235.00		1,494.54
640 Books and Periodicals	11,329.55			11,329.55
Total Supplies	\$12,589.09	\$235.00		\$12,824.09
700 Property				
750 Equipment – Original and Additional	4,890.18			4,890.18
Total Property	\$4,890.18			\$4,890.18
Total 1230 Emotional Support	\$384,521.67	\$390,596.08	\$331,878.00	\$1,106,995.75

General Fund (10)

1240 Academic Support

	<u>Elementary</u>	<u>Secondary</u>	<u>Federal</u>	<u>Total</u>
100 Personnel Services – Salaries				
100 Personnel Services – Salaries	1,094,584.27	949,236.92		2,043,821.19
Total Personnel Services – Salaries	\$1,094,584.27	\$949,236.92		\$2,043,821.19
200 Personnel Services – Employee Benefits				
210 Group Insurance – Contracted Provider	1,062.15	1,011.76		2,073.91
220 Social Security Contributions	80,909.42	70,569.01		151,478.43
230 PSERS Retirement Contributions	280,533.64	246,727.65		527,261.29
240 Tuition Reimbursement	1,825.00			1,825.00
250 Unemployment Compensation	9.96	(1,154.41)		(1,144.45)
260 Workers' Compensation	6,795.27	5,862.60		12,657.87
270 Group Insurance – Self-Insurance	257,639.88	301,390.47		559,030.35
290 Other Current Employee Benefits	18,720.00			18,720.00
Total Personnel Services – Employee Benefits	\$647,495.32	\$624,407.08		\$1,271,902.40
300 Purchased Professional and Technical Services				
322 Professional Educational Services – lus		17,144.98		17,144.98
330 Other Professional Services	180.00	275.00		455.00
Total Purchased Professional and Technical Services	\$180.00	\$17,419.98		\$17,599.98
500 Other Purchased Services				
561 Tuition To Other School Districts Within the State		108,223.02		108,223.02
580 Travel	102.80	48.76		151.56
Total Other Purchased Services	\$102.80	\$108,271.78		\$108,374.58
600 Supplies				
610 General Supplies	344.50	343.50		688.00
640 Books and Periodicals	3,830.58			3,830.58
Total Supplies	\$4,175.08	\$343.50		\$4,518.58
Total 1240 Academic Support	\$1,746,537.47	\$1,699,679.26		\$3,446,216.73

General Fund (10)

1241 Learning Support – Public

	<u>Elementary</u>	<u>Secondary</u>	<u>Federal</u>	<u>Total</u>
100 Personnel Services – Salaries				
100 Personnel Services – Salaries	1,009,050.87	822,435.98		1,831,486.85
Total Personnel Services – Salaries	\$1,009,050.87	\$822,435.98		\$1,831,486.85
200 Personnel Services – Employee Benefits				
210 Group Insurance – Contracted Provider	991.23	912.40		1,903.63
220 Social Security Contributions	74,399.42	60,405.03		134,804.45
230 PSERS Retirement Contributions	258,431.84	211,896.24		470,328.08
240 Tuition Reimbursement	1,825.00			1,825.00
250 Unemployment Compensation	9.96	(1,154.41)		(1,144.45)
260 Workers' Compensation	6,395.94	5,233.20		11,629.14
270 Group Insurance – Self-Insurance	279,398.41	278,557.47		557,955.88
290 Other Current Employee Benefits	18,720.00			18,720.00
Total Personnel Services – Employee Benefits	\$640,171.80	\$555,849.93		\$1,196,021.73
300 Purchased Professional and Technical Services				
322 Professional Educational Services – Ius		17,144.98		17,144.98
330 Other Professional Services	125.00			125.00
Total Purchased Professional and Technical Services	\$125.00	\$17,144.98		\$17,269.98
500 Other Purchased Services				
561 Tuition To Other School Districts Within the State		108,223.02		108,223.02
Total Other Purchased Services		\$108,223.02		\$108,223.02
600 Supplies				
640 Books and Periodicals	3,830.58			3,830.58
Total Supplies	\$3,830.58			\$3,830.58
Total 1241 Learning Support – Public	\$1,653,178.25	\$1,503,653.91		\$3,156,832.16

General Fund (10)

1243 Gifted Support

	<u>Elementary</u>	<u>Secondary</u>	<u>Federal</u>	<u>Total</u>
100 Personnel Services – Salaries				
100 Personnel Services – Salaries	85,533.40	126,800.94		212,334.34
Total Personnel Services – Salaries	\$85,533.40	\$126,800.94		\$212,334.34
200 Personnel Services – Employee Benefits				
210 Group Insurance – Contracted Provider	70.92	99.36		170.28
220 Social Security Contributions	6,510.00	10,163.98		16,673.98
230 PSERS Retirement Contributions	22,101.80	34,831.41		56,933.21
260 Workers' Compensation	399.33	629.40		1,028.73
270 Group Insurance – Self-Insurance	(21,758.53)	22,833.00		1,074.47
Total Personnel Services – Employee Benefits	\$7,323.52	\$68,557.15		\$75,880.67
300 Purchased Professional and Technical Services				
330 Other Professional Services	55.00	275.00		330.00
Total Purchased Professional and Technical Services	\$55.00	\$275.00		\$330.00
500 Other Purchased Services				
580 Travel	102.80	48.76		151.56
Total Other Purchased Services	\$102.80	\$48.76		\$151.56
600 Supplies				
610 General Supplies	344.50	343.50		688.00
Total Supplies	\$344.50	\$343.50		\$688.00
Total 1243 Gifted Support	\$93,359.22	\$196,025.35		\$289,384.57

General Fund (10)

1270 Multi-Handicapped Support

300 Purchased Professional and Technical Services

322 Professional Educational Services – lus

Total Purchased Professional and Technical Services

Total 1270 Multi-Handicapped Support

Elementary

Secondary

Federal

Total

253,765.68

188,481.74

442,247.42

\$253,765.68

\$188,481.74

\$442,247.42

\$253,765.68

\$188,481.74

\$442,247.42

LEA : 112671803 Dover Area SD

Printed 11/21/2016 12:09:34 PM

General Fund (10)

1280 Early Intervention Support

300 Purchased Professional and Technical Services

322 Professional Educational Services – lus

Total Purchased Professional and Technical Services

Total 1280 Early Intervention Support

Elementary

Secondary

Federal

Total

24,787.24

24,787.24

\$24,787.24

\$24,787.24

\$24,787.24

\$24,787.24

General Fund (10)

1290 Special Programs - Other Support

300 Purchased Professional and Technical Services

322 Professional Educational Services – Ius

323 Professional Educational Services – Other Educational Agencies

Total Purchased Professional and Technical Services

500 Other Purchased Services

594 IU Payment By Withholding for Institutionalized Children’s Programs – Special Classes

Total Other Purchased Services

Total 1290 Special Programs - Other Support

	<u>Elementary</u>	<u>Secondary</u>	<u>Federal</u>	<u>Total</u>
322 Professional Educational Services – Ius	2,406.03	5,606.02		8,012.05
323 Professional Educational Services – Other Educational Agencies		68,631.00		68,631.00
Total Purchased Professional and Technical Services	\$2,406.03	\$74,237.02		\$76,643.05
594 IU Payment By Withholding for Institutionalized Children’s Programs – Special Classes		746.60		746.60
Total Other Purchased Services		\$746.60		\$746.60
Total 1290 Special Programs - Other Support	\$2,406.03	\$74,983.62		\$77,389.65

General Fund (10)

1300 Vocational Education

	<u>Elementary</u>	<u>Secondary</u>	<u>Federal</u>	<u>Total</u>
100 Personnel Services – Salaries				
100 Personnel Services – Salaries		1,172,133.41		1,172,133.41
Total Personnel Services – Salaries		\$1,172,133.41		\$1,172,133.41
200 Personnel Services – Employee Benefits				
210 Group Insurance – Contracted Provider		1,385.88		1,385.88
220 Social Security Contributions		86,975.76		86,975.76
230 PSERS Retirement Contributions		302,842.24		302,842.24
240 Tuition Reimbursement		8,462.58		8,462.58
250 Unemployment Compensation		12,760.74		12,760.74
260 Workers' Compensation		5,472.71		5,472.71
270 Group Insurance – Self-Insurance		293,701.92		293,701.92
Total Personnel Services – Employee Benefits		\$711,601.83		\$711,601.83
300 Purchased Professional and Technical Services				
330 Other Professional Services		18,565.00		18,565.00
Total Purchased Professional and Technical Services		\$18,565.00		\$18,565.00
400 Purchased Property Services				
430 Repairs and Maintenance Services		2,539.88		2,539.88
Total Purchased Property Services		\$2,539.88		\$2,539.88
500 Other Purchased Services				
564 Tuition To Career and Technology Centers		1,277,053.24		1,277,053.24
580 Travel		5,584.52		5,584.52
Total Other Purchased Services		\$1,282,637.76		\$1,282,637.76
600 Supplies				
610 General Supplies		91,405.63		91,405.63
630 Food		2,284.99		2,284.99
640 Books and Periodicals		5,327.97		5,327.97
Total Supplies		\$99,018.59		\$99,018.59
700 Property				
750 Equipment – Original and Additional		22,755.43		22,755.43
760 Equipment – Replacement		18,798.53		18,798.53
Total Property		\$41,553.96		\$41,553.96
800 Other Objects				
810 Dues and Fees		11,706.20		11,706.20
890 Miscellaneous Expenditures		4,000.00		4,000.00
Total Other Objects		\$15,706.20		\$15,706.20
Total 1300 Vocational Education		\$3,343,756.63		\$3,343,756.63

General Fund (10)

	<u>Elementary</u>	<u>Secondary</u>	<u>Federal</u>	<u>Total</u>
1400 Other Instructional Programs – Elementary / Secondary				
100 Personnel Services – Salaries				
100 Personnel Services – Salaries		96,683.07		96,683.07
Total Personnel Services – Salaries		\$96,683.07		\$96,683.07
200 Personnel Services – Employee Benefits				
210 Group Insurance – Contracted Provider		56.64		56.64
220 Social Security Contributions		7,304.48		7,304.48
230 PSERS Retirement Contributions		24,979.16		24,979.16
260 Workers' Compensation		451.39		451.39
270 Group Insurance – Self-Insurance		11,088.00		11,088.00
Total Personnel Services – Employee Benefits		\$43,879.67		\$43,879.67
300 Purchased Professional and Technical Services				
323 Professional Educational Services – Other Educational Agencies	143,375.00	380,175.00		523,550.00
Total Purchased Professional and Technical Services	\$143,375.00	\$380,175.00		\$523,550.00
500 Other Purchased Services				
561 Tuition To Other School Districts Within the State	630.00	18,953.00		19,583.00
568 Tuition To Private Residential Rehabilitative Institutions (PRRI) [In-State] and Detention Centers		6,606.93		6,606.93
Total Other Purchased Services	\$630.00	\$25,559.93		\$26,189.93
800 Other Objects				
810 Dues and Fees		800.00		800.00
Total Other Objects		\$800.00		\$800.00
Total 1400 Other Instructional Programs – Elementary / Secondary	\$144,005.00	\$547,097.67		\$691,102.67

General Fund (10)

1410 Drivers' Education

100 Personnel Services – Salaries

	<u>Elementary</u>	<u>Secondary</u>	<u>Federal</u>	<u>Total</u>
100 Personnel Services – Salaries		69,583.84		69,583.84
Total Personnel Services – Salaries		\$69,583.84		\$69,583.84
200 Personnel Services – Employee Benefits				
210 Group Insurance – Contracted Provider		56.64		56.64
220 Social Security Contributions		5,235.92		5,235.92
230 PSERS Retirement Contributions		17,980.53		17,980.53
260 Workers' Compensation		324.91		324.91
270 Group Insurance – Self-Insurance		11,088.00		11,088.00
Total Personnel Services – Employee Benefits		\$34,686.00		\$34,686.00
Total 1410 Drivers' Education		\$104,269.84		\$104,269.84

Total Personnel Services – Salaries

\$69,583.84 **\$69,583.84**

200 Personnel Services – Employee Benefits

210 Group Insurance – Contracted Provider 56.64 56.64

220 Social Security Contributions 5,235.92 5,235.92

230 PSERS Retirement Contributions 17,980.53 17,980.53

260 Workers' Compensation 324.91 324.91

270 Group Insurance – Self-Insurance 11,088.00 11,088.00

Total Personnel Services – Employee Benefits

\$34,686.00 **\$34,686.00**

Total 1410 Drivers' Education

\$104,269.84 **\$104,269.84**

General Fund (10)

1430 Homebound Instruction

100 Personnel Services – Salaries

100 Personnel Services – Salaries

Total Personnel Services – Salaries

200 Personnel Services – Employee Benefits

220 Social Security Contributions

230 PSERS Retirement Contributions

260 Workers’ Compensation

Total Personnel Services – Employee Benefits

500 Other Purchased Services

561 Tuition To Other School Districts Within the State

Total Other Purchased Services

Total 1430 Homebound Instruction

	<u>Elementary</u>	<u>Secondary</u>	<u>Federal</u>	<u>Total</u>
		27,099.23		27,099.23
		\$27,099.23		\$27,099.23
		2,068.56		2,068.56
		6,998.63		6,998.63
		126.48		126.48
		\$9,193.67		\$9,193.67
	630.00	11,192.81		11,822.81
	\$630.00	\$11,192.81		\$11,822.81
	\$630.00	\$47,485.71		\$48,115.71

General Fund (10)

	<u>Elementary</u>	<u>Secondary</u>	<u>Federal</u>	<u>Total</u>
1440 Alternative Regular Education Programs				
300 <u>Purchased Professional and Technical Services</u>				
323 Professional Educational Services – Other Educational Agencies	143,375.00	380,175.00		523,550.00
Total Purchased Professional and Technical Services	\$143,375.00	\$380,175.00		\$523,550.00
500 <u>Other Purchased Services</u>				
561 Tuition To Other School Districts Within the State		7,760.19		7,760.19
568 Tuition To Private Residential Rehabilitative Institutions (PRRI) [In-State] and Detention Centers		6,606.93		6,606.93
Total Other Purchased Services		\$14,367.12		\$14,367.12
800 <u>Other Objects</u>				
810 Dues and Fees		800.00		800.00
Total Other Objects		\$800.00		\$800.00
Total 1440 Alternative Regular Education Programs	\$143,375.00	\$395,342.12		\$538,717.12

General Fund (10)

1441 Adjudicated / Court-Placed Programs

Elementary

Secondary

Federal

Total

500 Other Purchased Services

561 Tuition To Other School Districts Within the State

7,760.19

7,760.19

568 Tuition To Private Residential Rehabilitative Institutions (PRRI) [In-State] and Detention Centers

6,606.93

6,606.93

Total Other Purchased Services

\$14,367.12

\$14,367.12

Total 1441 Adjudicated / Court-Placed Programs

\$14,367.12

\$14,367.12

General Fund (10)

	<u>Elementary</u>	<u>Secondary</u>	<u>Federal</u>	<u>Total</u>
1442 Alternative Education Programs				
300 <u>Purchased Professional and Technical Services</u>				
323 Professional Educational Services – Other Educational Agencies	143,375.00	380,175.00		523,550.00
Total Purchased Professional and Technical Services	\$143,375.00	\$380,175.00		\$523,550.00
800 <u>Other Objects</u>				
810 Dues and Fees		800.00		800.00
Total Other Objects		\$800.00		\$800.00
Total 1442 Alternative Education Programs	\$143,375.00	\$380,975.00		\$524,350.00

LEA : 112671803 Dover Area SD

Printed 11/21/2016 12:09:34 PM

General Fund (10)

1700 Higher Education Programs

Elementary

Secondary

Federal

Total

500 Other Purchased Services

566 Tuition To Institutions of Higher Education and Technical Institutes

40,500.00

Total Other Purchased Services

\$40,500.00

Total 1700 Higher Education Programs

\$40,500.00

General Fund (10)

2000 Support Services

Total

100 Personnel Services – Salaries

100 Personnel Services – Salaries 5,148,592.10

Total Personnel Services – Salaries

\$5,148,592.10

200 Personnel Services – Employee Benefits

210 Group Insurance – Contracted Provider 12,044.96

220 Social Security Contributions 384,277.13

230 PSERS Retirement Contributions 1,319,687.58

240 Tuition Reimbursement 19,106.25

250 Unemployment Compensation 16,056.40

260 Workers' Compensation 24,168.32

270 Group Insurance – Self-Insurance 1,451,358.96

290 Other Current Employee Benefits 24,720.00

Total Personnel Services – Employee Benefits

\$3,251,419.60

300 Purchased Professional and Technical Services

310 Official / Administrative Services 47,385.09

322 Professional Educational Services – Ius 459,612.76

323 Professional Educational Services – Other Educational Agencies 28,158.14

324 Professional Educational Services – Employee Training and Development Services 1,248.75

330 Other Professional Services 314,616.66

340 Technical Services 566,773.97

390 Other Purchased Professional and Technical Services 15,096.77

Total Purchased Professional and Technical Services

\$1,432,892.14

400 Purchased Property Services

410 Cleaning Services 56,870.54

420 Utility Services 742,377.36

430 Repairs and Maintenance Services 403,778.82

440 Rentals 3,846.60

460 Extermination Services 5,215.16

490 Other Purchased Property Services 8,553.25

Total Purchased Property Services

\$1,220,641.73

500 Other Purchased Services

513 Contracted Carriers 2,813,779.37

516 Student Transportation Services From the IU 403,183.17

520 Insurance – General 26,562.00

522 Automotive Liability Insurance 11,829.00

523 General Property and Liability Insurance 117,386.50

530 Communications 123,106.88

549 Other Advertising/Public Relations 3,484.77

580 Travel 6,267.07

595 IU Payments By Withholding 27,824.92

599 Other Miscellaneous Purchased Services 1,384.00

Total Other Purchased Services

\$3,534,807.68

600 Supplies

610 General Supplies 454,044.06

LEA : 112671803 Dover Area SD

Printed 11/21/2016 12:09:36 PM

General Fund (10)

2000 Support Services

Total

600 Supplies

620 Energy	188,806.29
630 Food	9,557.61
640 Books and Periodicals	16,400.50
650 Supplies & Fees – Technology Related	25,129.30

Total Supplies	\$693,937.76
-----------------------	---------------------

700 Property

750 Equipment – Original and Additional	277,889.91
760 Equipment – Replacement	33,353.38

Total Property	\$311,243.29
-----------------------	---------------------

800 Other Objects

810 Dues and Fees	231,469.88
860 Grants To Municipal and Community Service Organizations	5,000.00

Total Other Objects	\$236,469.88
----------------------------	---------------------

Total 2000 Support Services	\$15,830,004.18
------------------------------------	------------------------

General Fund (10)

2100 Support Services – Students

	<u>Elementary</u>	<u>Secondary</u>	<u>Federal</u>	<u>Total</u>
100 Personnel Services – Salaries				
100 Personnel Services – Salaries	279,222.00	483,648.02		844,487.89
Total Personnel Services – Salaries	\$279,222.00	\$483,648.02		\$844,487.89
200 Personnel Services – Employee Benefits				
210 Group Insurance – Contracted Provider	227.04	368.88		893.76
220 Social Security Contributions	20,864.85	36,105.48		62,885.38
230 PSERS Retirement Contributions	71,927.11	124,842.44		217,859.55
240 Tuition Reimbursement		2,190.00		2,190.00
260 Workers' Compensation	1,303.67	2,258.33		3,943.12
270 Group Insurance – Self-Insurance	65,962.00	126,310.00		214,448.00
290 Other Current Employee Benefits				9,360.00
Total Personnel Services – Employee Benefits	\$160,284.67	\$292,075.13		\$511,579.81
300 Purchased Professional and Technical Services				
322 Professional Educational Services – lus	258,714.09		134,337.00	393,051.09
323 Professional Educational Services – Other Educational Agencies		28,158.14		28,158.14
330 Other Professional Services		353.06		353.06
390 Other Purchased Professional and Technical Services		478.50		478.50
Total Purchased Professional and Technical Services	\$258,714.09	\$28,989.70	\$134,337.00	\$422,040.79
600 Supplies				
610 General Supplies	678.47	785.82		1,464.29
Total Supplies	\$678.47	\$785.82		\$1,464.29
Total 2100 Support Services – Students	\$698,899.23	\$805,498.67	\$134,337.00	\$1,779,572.78

General Fund (10)

2120 Guidance Services

100 Personnel Services – Salaries

	<u>Elementary</u>	<u>Secondary</u>	<u>Federal</u>	<u>Total</u>
100 Personnel Services – Salaries	279,222.00	483,648.02		762,870.02
Total Personnel Services – Salaries	\$279,222.00	\$483,648.02		\$762,870.02

200 Personnel Services – Employee Benefits

210 Group Insurance – Contracted Provider	227.04	368.88		595.92
220 Social Security Contributions	20,864.85	36,105.48		56,970.33
230 PSERS Retirement Contributions	71,927.11	124,842.44		196,769.55
240 Tuition Reimbursement		2,190.00		2,190.00
260 Workers' Compensation	1,303.67	2,258.33		3,562.00
270 Group Insurance – Self-Insurance	65,962.00	126,310.00		192,272.00
Total Personnel Services – Employee Benefits	\$160,284.67	\$292,075.13		\$452,359.80

300 Purchased Professional and Technical Services

323 Professional Educational Services – Other Educational Agencies		28,158.14		28,158.14
330 Other Professional Services		353.06		353.06
390 Other Purchased Professional and Technical Services		478.50		478.50
Total Purchased Professional and Technical Services		\$28,989.70		\$28,989.70

600 Supplies

610 General Supplies	678.47	785.82		1,464.29
Total Supplies	\$678.47	\$785.82		\$1,464.29

Total 2120 Guidance Services

	\$440,185.14	\$805,498.67		\$1,245,683.81
--	---------------------	---------------------	--	-----------------------

General Fund (10)

2130 Attendance Services

Elementary

Secondary

Federal

Total

100 Personnel Services – Salaries

100 Personnel Services – Salaries

81,617.87

Total Personnel Services – Salaries

\$81,617.87

200 Personnel Services – Employee Benefits

210 Group Insurance – Contracted Provider

297.84

220 Social Security Contributions

5,915.05

230 PSERS Retirement Contributions

21,090.00

260 Workers' Compensation

381.12

270 Group Insurance – Self-Insurance

22,176.00

290 Other Current Employee Benefits

9,360.00

Total Personnel Services – Employee Benefits

\$59,220.01

Total 2130 Attendance Services

\$140,837.88

General Fund (10)

2140 Psychological Services

300 Purchased Professional and Technical Services

322 Professional Educational Services – lus

Total Purchased Professional and Technical Services

Total 2140 Psychological Services

	<u>Elementary</u>	<u>Secondary</u>	<u>Federal</u>	<u>Total</u>
	258,714.09		134,337.00	393,051.09
	\$258,714.09		\$134,337.00	\$393,051.09
	\$258,714.09		\$134,337.00	\$393,051.09

General Fund (10)

2200 Support Services – Instructional Staff

	<u>Elementary</u>	<u>Secondary</u>	<u>Federal</u>	<u>Total</u>
100 Personnel Services – Salaries				
100 Personnel Services – Salaries	313,006.23	435,192.90		748,199.13
Total Personnel Services – Salaries	\$313,006.23	\$435,192.90		\$748,199.13
200 Personnel Services – Employee Benefits				
210 Group Insurance – Contracted Provider	264.84	1,738.87		2,003.71
220 Social Security Contributions	22,969.87	32,224.79	1,554.55	56,749.21
230 PSERS Retirement Contributions	81,129.15	113,289.37	2,666.66	197,085.18
240 Tuition Reimbursement		5,520.00		5,520.00
260 Workers' Compensation	1,461.47	2,031.72	131.45	3,624.64
270 Group Insurance – Self-Insurance	33,256.02	65,841.68		99,097.70
Total Personnel Services – Employee Benefits	\$139,081.35	\$220,646.43	\$4,352.66	\$364,080.44
300 Purchased Professional and Technical Services				
330 Other Professional Services		1,520.83	25,010.42	26,531.25
340 Technical Services		552,919.81		552,919.81
Total Purchased Professional and Technical Services		\$554,440.64	\$25,010.42	\$579,451.06
400 Purchased Property Services				
430 Repairs and Maintenance Services		11,510.57		11,510.57
Total Purchased Property Services		\$11,510.57		\$11,510.57
500 Other Purchased Services				
520 Insurance – General		7,596.00		7,596.00
580 Travel		223.08		223.08
Total Other Purchased Services		\$7,819.08		\$7,819.08
600 Supplies				
610 General Supplies	932.13	87,861.76		88,793.89
640 Books and Periodicals	9,330.22	4,960.33		14,290.55
Total Supplies	\$10,262.35	\$92,822.09		\$103,084.44
700 Property				
750 Equipment – Original and Additional		226,029.05		226,029.05
760 Equipment – Replacement		24,466.24		24,466.24
Total Property		\$250,495.29		\$250,495.29
Total 2200 Support Services – Instructional Staff	\$462,349.93	\$1,572,927.00	\$29,363.08	\$2,064,640.01

General Fund (10)

2220 Technology Support Services

100 Personnel Services – Salaries

	<u>Elementary</u>	<u>Secondary</u>	<u>Federal</u>	<u>Total</u>
100 Personnel Services – Salaries		67,799.75		67,799.75
Total Personnel Services – Salaries		\$67,799.75		\$67,799.75

200 Personnel Services – Employee Benefits

210 Group Insurance – Contracted Provider		380.88		380.88
220 Social Security Contributions		5,116.87		5,116.87
230 PSERS Retirement Contributions		18,432.77		18,432.77
260 Workers' Compensation		316.54		316.54
270 Group Insurance – Self-Insurance		7,836.00		7,836.00
Total Personnel Services – Employee Benefits		\$32,083.06		\$32,083.06

400 Purchased Property Services

430 Repairs and Maintenance Services		508.75		508.75
Total Purchased Property Services		\$508.75		\$508.75

500 Other Purchased Services

580 Travel		223.08		223.08
Total Other Purchased Services		\$223.08		\$223.08

600 Supplies

610 General Supplies		38,219.60		38,219.60
Total Supplies		\$38,219.60		\$38,219.60

700 Property

750 Equipment – Original and Additional		39,507.53		39,507.53
Total Property		\$39,507.53		\$39,507.53

Total 2220 Technology Support Services

		\$178,341.77		\$178,341.77
--	--	---------------------	--	---------------------

General Fund (10)

	<u>Elementary</u>	<u>Secondary</u>	<u>Federal</u>	<u>Total</u>
2240 Computer-Assisted Instruction Support Services				
300 <u>Purchased Professional and Technical Services</u>				
340 Technical Services		552,919.81		552,919.81
Total Purchased Professional and Technical Services		\$552,919.81		\$552,919.81
400 <u>Purchased Property Services</u>				
430 Repairs and Maintenance Services		10,706.82		10,706.82
Total Purchased Property Services		\$10,706.82		\$10,706.82
500 <u>Other Purchased Services</u>				
520 Insurance – General		7,596.00		7,596.00
Total Other Purchased Services		\$7,596.00		\$7,596.00
600 <u>Supplies</u>				
610 General Supplies		49,294.62		49,294.62
Total Supplies		\$49,294.62		\$49,294.62
700 <u>Property</u>				
750 Equipment – Original and Additional		186,521.52		186,521.52
760 Equipment – Replacement		24,466.24		24,466.24
Total Property		\$210,987.76		\$210,987.76
Total 2240 Computer-Assisted Instruction Support Services		\$831,505.01		\$831,505.01

General Fund (10)

	<u>Elementary</u>	<u>Secondary</u>	<u>Federal</u>	<u>Total</u>
2250 School Library Services				
100 Personnel Services – Salaries				
100 Personnel Services – Salaries	312,578.73	41,687.17		354,265.90
Total Personnel Services – Salaries	\$312,578.73	\$41,687.17		\$354,265.90
200 Personnel Services – Employee Benefits				
210 Group Insurance – Contracted Provider	264.84	75.60		340.44
220 Social Security Contributions	22,937.16	2,968.13		25,905.29
230 PSERS Retirement Contributions	81,129.15	10,694.30		91,823.45
260 Workers' Compensation	1,459.48	194.64		1,654.12
270 Group Insurance – Self-Insurance	33,256.02	(19,089.32)		14,166.70
Total Personnel Services – Employee Benefits	\$139,046.65	(\$5,156.65)		\$133,890.00
400 Purchased Property Services				
430 Repairs and Maintenance Services		295.00		295.00
Total Purchased Property Services		\$295.00		\$295.00
600 Supplies				
610 General Supplies	932.13	347.54		1,279.67
640 Books and Periodicals	9,330.22	4,960.33		14,290.55
Total Supplies	\$10,262.35	\$5,307.87		\$15,570.22
Total 2250 School Library Services	\$461,887.73	\$42,133.39		\$504,021.12

General Fund (10)

2260 Instruction and Curriculum Development Services

	<u>Elementary</u>	<u>Secondary</u>	<u>Federal</u>	<u>Total</u>
100 Personnel Services – Salaries				
100 Personnel Services – Salaries	427.50	325,705.98		326,133.48
Total Personnel Services – Salaries	\$427.50	\$325,705.98		\$326,133.48
200 Personnel Services – Employee Benefits				
210 Group Insurance – Contracted Provider		1,282.39		1,282.39
220 Social Security Contributions	32.71	24,139.79		24,172.50
230 PSERS Retirement Contributions		84,162.30		84,162.30
240 Tuition Reimbursement		5,520.00		5,520.00
260 Workers' Compensation	1.99	1,520.54		1,522.53
270 Group Insurance – Self-Insurance		77,095.00		77,095.00
Total Personnel Services – Employee Benefits	\$34.70	\$193,720.02		\$193,754.72
300 Purchased Professional and Technical Services				
330 Other Professional Services		1,520.83		1,520.83
Total Purchased Professional and Technical Services		\$1,520.83		\$1,520.83
Total 2260 Instruction and Curriculum Development Services	\$462.20	\$520,946.83		\$521,409.03

General Fund (10)

2270 Instructional Staff Professional Development Services

	<u>Elementary</u>	<u>Secondary</u>	<u>Federal</u>	<u>Total</u>
200 Personnel Services – Employee Benefits				
220 Social Security Contributions			1,554.55	1,554.55
230 PSERS Retirement Contributions			2,666.66	2,666.66
260 Workers' Compensation			131.45	131.45
Total Personnel Services – Employee Benefits			\$4,352.66	\$4,352.66
300 Purchased Professional and Technical Services				
330 Other Professional Services			25,010.42	25,010.42
Total Purchased Professional and Technical Services			\$25,010.42	\$25,010.42
Total 2270 Instructional Staff Professional Development Services			\$29,363.08	\$29,363.08

General Fund (10)

	<u>Elementary</u>	<u>Secondary</u>	<u>Federal</u>	<u>Total</u>
2300 Support Services – Administration				
100 Personnel Services – Salaries				
100 Personnel Services – Salaries	627,184.88	502,603.31		1,334,856.62
Total Personnel Services – Salaries	\$627,184.88	\$502,603.31		\$1,334,856.62
200 Personnel Services – Employee Benefits				
210 Group Insurance – Contracted Provider	2,377.44	2,287.01		5,480.21
220 Social Security Contributions	46,756.88	36,958.23		100,026.29
230 PSERS Retirement Contributions	162,064.70	127,126.74		340,091.64
240 Tuition Reimbursement				8,421.25
260 Workers' Compensation	2,928.28	2,346.60		6,230.49
270 Group Insurance – Self-Insurance	117,429.36	155,232.66		314,938.02
290 Other Current Employee Benefits	1,200.00	11,760.00		12,960.00
Total Personnel Services – Employee Benefits	\$332,756.66	\$335,711.24		\$788,147.90
300 Purchased Professional and Technical Services				
310 Official / Administrative Services				37,685.09
330 Other Professional Services				67,872.50
390 Other Purchased Professional and Technical Services				14,618.27
Total Purchased Professional and Technical Services				\$120,175.86
500 Other Purchased Services				
520 Insurance – General				18,709.00
549 Other Advertising/Public Relations				500.47
580 Travel	1,010.32			4,397.63
599 Other Miscellaneous Purchased Services				1,384.00
Total Other Purchased Services	\$1,010.32			\$24,991.10
600 Supplies				
610 General Supplies	3,208.26	5,045.54		32,337.82
630 Food	756.64	375.85		2,400.68
640 Books and Periodicals			1,623.50	2,086.95
Total Supplies	\$3,964.90	\$5,421.39	\$1,623.50	\$36,825.45
700 Property				
750 Equipment – Original and Additional				709.94
Total Property				\$709.94
800 Other Objects				
810 Dues and Fees	693.10	1,189.10		158,360.01
860 Grants To Municipal and Community Service Organizations				5,000.00
Total Other Objects	\$693.10	\$1,189.10		\$163,360.01
Total 2300 Support Services – Administration	\$965,609.86	\$844,925.04	\$1,623.50	\$2,469,066.88

General Fund (10)

2310 Board Services

Elementary

Secondary

Federal

Total

300 Purchased Professional and Technical Services

310 Official / Administrative Services

999.00

330 Other Professional Services

1,393.00

390 Other Purchased Professional and Technical Services

12,243.27

Total Purchased Professional and Technical Services

\$14,635.27

500 Other Purchased Services

520 Insurance – General

18,709.00

Total Other Purchased Services

\$18,709.00

600 Supplies

610 General Supplies

8,355.42

630 Food

479.99

Total Supplies

\$8,835.41

Total 2310 Board Services

\$42,179.68

General Fund (10)

	<u>Elementary</u>	<u>Secondary</u>	<u>Federal</u>	<u>Total</u>
2330 Tax Assessment and Collection Services				
200 <u>Personnel Services – Employee Benefits</u>				
220 Social Security Contributions				2,596.34
Total Personnel Services – Employee Benefits				\$2,596.34
300 <u>Purchased Professional and Technical Services</u>				
310 Official / Administrative Services				36,686.09
Total Purchased Professional and Technical Services				\$36,686.09
600 <u>Supplies</u>				
610 General Supplies				8,104.93
Total Supplies				\$8,104.93
Total 2330 Tax Assessment and Collection Services				\$47,387.36

General Fund (10)

2340 Staff Relations and Negotiations Services

Elementary

Secondary

Federal

Total

300 Purchased Professional and Technical Services

330 Other Professional Services

3,350.00

Total Purchased Professional and Technical Services

\$3,350.00

Total 2340 Staff Relations and Negotiations Services

\$3,350.00

LEA : 112671803 Dover Area SD

Printed 11/21/2016 12:09:36 PM

General Fund (10)

	<u>Elementary</u>	<u>Secondary</u>	<u>Federal</u>	<u>Total</u>
2350 Legal and Accounting Services				
300 <u>Purchased Professional and Technical Services</u>				
330 Other Professional Services				63,129.50
Total Purchased Professional and Technical Services				\$63,129.50
Total 2350 Legal and Accounting Services				\$63,129.50

General Fund (10)

2360 Office of the Superintendent / Executive Director Services

Elementary

Secondary

Federal

Total

100 Personnel Services – Salaries

100 Personnel Services – Salaries

205,068.43

Total Personnel Services – Salaries

\$205,068.43

200 Personnel Services – Employee Benefits

210 Group Insurance – Contracted Provider

815.76

220 Social Security Contributions

13,714.84

230 PSERS Retirement Contributions

50,900.20

240 Tuition Reimbursement

8,421.25

260 Workers' Compensation

955.61

270 Group Insurance – Self-Insurance

42,276.00

Total Personnel Services – Employee Benefits

\$117,083.66

300 Purchased Professional and Technical Services

390 Other Purchased Professional and Technical Services

2,375.00

Total Purchased Professional and Technical Services

\$2,375.00

500 Other Purchased Services

549 Other Advertising/Public Relations

500.47

580 Travel

3,387.31

599 Other Miscellaneous Purchased Services

1,384.00

Total Other Purchased Services

\$5,271.78

600 Supplies

610 General Supplies

7,623.67

630 Food

788.20

640 Books and Periodicals

1,623.50

2,086.95

Total Supplies

\$1,623.50

\$10,498.82

700 Property

750 Equipment – Original and Additional

709.94

Total Property

\$709.94

800 Other Objects

810 Dues and Fees

1,096.00

Total Other Objects

\$1,096.00

Total 2360 Office of the Superintendent / Executive Director Services

\$1,623.50

\$342,103.63

General Fund (10)

2380 Office of the Principal Services

100 Personnel Services – Salaries

	<u>Elementary</u>	<u>Secondary</u>	<u>Federal</u>	<u>Total</u>
100 Personnel Services – Salaries	627,184.88	502,603.31		1,129,788.19
Total Personnel Services – Salaries	\$627,184.88	\$502,603.31		\$1,129,788.19

200 Personnel Services – Employee Benefits

210 Group Insurance – Contracted Provider	2,377.44	2,287.01		4,664.45
220 Social Security Contributions	46,756.88	36,958.23		83,715.11
230 PSERS Retirement Contributions	162,064.70	127,126.74		289,191.44
260 Workers' Compensation	2,928.28	2,346.60		5,274.88
270 Group Insurance – Self-Insurance	117,429.36	155,232.66		272,662.02
290 Other Current Employee Benefits	1,200.00	11,760.00		12,960.00
Total Personnel Services – Employee Benefits	\$332,756.66	\$335,711.24		\$668,467.90

500 Other Purchased Services

580 Travel	1,010.32			1,010.32
Total Other Purchased Services	\$1,010.32			\$1,010.32

600 Supplies

610 General Supplies	3,208.26	5,045.54		8,253.80
630 Food	756.64	375.85		1,132.49
Total Supplies	\$3,964.90	\$5,421.39		\$9,386.29

800 Other Objects

810 Dues and Fees	693.10	1,189.10		1,882.20
Total Other Objects	\$693.10	\$1,189.10		\$1,882.20

Total 2380 Office of the Principal Services

	\$965,609.86	\$844,925.04		\$1,810,534.90
--	---------------------	---------------------	--	-----------------------

LEA : 112671803 Dover Area SD

Printed 11/21/2016 12:09:36 PM

General Fund (10)

2390 Other Administration Services

Elementary

Secondary

Federal

Total

800 Other Objects

810 Dues and Fees

155,381.81

860 Grants To Municipal and Community Service Organizations

5,000.00

Total Other Objects

\$160,381.81

Total 2390 Other Administration Services

\$160,381.81

General Fund (10)

	<u>Elementary</u>	<u>Secondary</u>	<u>Federal</u>	<u>Total</u>
2400 Support Services – Pupil Health				
100 Personnel Services – Salaries				
100 Personnel Services – Salaries				353,552.79
Total Personnel Services – Salaries				\$353,552.79
200 Personnel Services – Employee Benefits				
210 Group Insurance – Contracted Provider				334.14
220 Social Security Contributions				26,358.07
230 PSERS Retirement Contributions				89,810.30
260 Workers' Compensation				1,650.62
270 Group Insurance – Self-Insurance				100,692.00
Total Personnel Services – Employee Benefits				\$218,845.13
300 Purchased Professional and Technical Services				
322 Professional Educational Services – lus				66,561.67
330 Other Professional Services				10,053.75
Total Purchased Professional and Technical Services				\$76,615.42
400 Purchased Property Services				
430 Repairs and Maintenance Services				668.40
Total Purchased Property Services				\$668.40
500 Other Purchased Services				
580 Travel				35.10
Total Other Purchased Services				\$35.10
600 Supplies				
610 General Supplies				12,880.47
Total Supplies				\$12,880.47
700 Property				
750 Equipment – Original and Additional				735.92
Total Property				\$735.92
Total 2400 Support Services – Pupil Health				\$663,333.23

General Fund (10)

2420 Medical Services

	<u>Elementary</u>	<u>Secondary</u>	<u>Federal</u>	<u>Total</u>
100 Personnel Services – Salaries				
100 Personnel Services – Salaries				353,552.79
Total Personnel Services – Salaries				\$353,552.79
200 Personnel Services – Employee Benefits				
210 Group Insurance – Contracted Provider				334.14
220 Social Security Contributions				26,358.07
230 PSERS Retirement Contributions				89,810.30
260 Workers' Compensation				1,650.62
270 Group Insurance – Self-Insurance				100,692.00
Total Personnel Services – Employee Benefits				\$218,845.13
300 Purchased Professional and Technical Services				
322 Professional Educational Services – lus				66,561.67
330 Other Professional Services				10,053.75
Total Purchased Professional and Technical Services				\$76,615.42
400 Purchased Property Services				
430 Repairs and Maintenance Services				668.40
Total Purchased Property Services				\$668.40
500 Other Purchased Services				
580 Travel				35.10
Total Other Purchased Services				\$35.10
600 Supplies				
610 General Supplies				12,880.47
Total Supplies				\$12,880.47
700 Property				
750 Equipment – Original and Additional				735.92
Total Property				\$735.92
Total 2420 Medical Services				\$663,333.23

General Fund (10)

	<u>Elementary</u>	<u>Secondary</u>	<u>Federal</u>	<u>Total</u>
2500 Support Services – Business				
100 Personnel Services – Salaries				
100 Personnel Services – Salaries				264,906.94
Total Personnel Services – Salaries				\$264,906.94
200 Personnel Services – Employee Benefits				
210 Group Insurance – Contracted Provider				806.72
220 Social Security Contributions				19,316.66
230 PSERS Retirement Contributions				68,668.73
240 Tuition Reimbursement				2,975.00
250 Unemployment Compensation				3,549.80
260 Workers' Compensation				1,236.98
270 Group Insurance – Self-Insurance				93,766.40
Total Personnel Services – Employee Benefits				\$190,320.29
300 Purchased Professional and Technical Services				
310 Official / Administrative Services				9,700.00
324 Professional Educational Services – Employee Training and Development Services				698.75
330 Other Professional Services				33,700.00
340 Technical Services				9,403.66
Total Purchased Professional and Technical Services				\$53,502.41
500 Other Purchased Services				
520 Insurance – General				257.00
549 Other Advertising/Public Relations				2,984.30
580 Travel				1,018.87
Total Other Purchased Services				\$4,260.17
600 Supplies				
610 General Supplies				49,834.71
630 Food				228.59
640 Books and Periodicals				23.00
650 Supplies & Fees – Technology Related				25,129.30
Total Supplies				\$75,215.60
700 Property				
760 Equipment – Replacement				1,000.00
Total Property				\$1,000.00
800 Other Objects				
810 Dues and Fees				72,594.87
Total Other Objects				\$72,594.87
Total 2500 Support Services – Business				\$661,800.28

General Fund (10)

2510 Fiscal Services

Elementary Secondary Federal Total

100 Personnel Services – Salaries				
100 Personnel Services – Salaries				226,347.86
Total Personnel Services – Salaries				\$226,347.86
200 Personnel Services – Employee Benefits				
210 Group Insurance – Contracted Provider				806.72
220 Social Security Contributions				16,370.89
230 PSERS Retirement Contributions				58,705.06
240 Tuition Reimbursement				2,975.00
250 Unemployment Compensation				3,549.80
260 Workers' Compensation				1,056.95
270 Group Insurance – Self-Insurance				93,094.40
Total Personnel Services – Employee Benefits				\$176,558.82
300 Purchased Professional and Technical Services				
310 Official / Administrative Services				9,700.00
324 Professional Educational Services – Employee Training and Development Services				698.75
330 Other Professional Services				33,700.00
340 Technical Services				9,403.66
Total Purchased Professional and Technical Services				\$53,502.41
500 Other Purchased Services				
520 Insurance – General				257.00
549 Other Advertising/Public Relations				2,984.30
580 Travel				1,018.87
Total Other Purchased Services				\$4,260.17
600 Supplies				
610 General Supplies				39,091.37
630 Food				228.59
640 Books and Periodicals				23.00
650 Supplies & Fees – Technology Related				25,129.30
Total Supplies				\$64,472.26
700 Property				
760 Equipment – Replacement				1,000.00
Total Property				\$1,000.00
800 Other Objects				
810 Dues and Fees				72,594.87
Total Other Objects				\$72,594.87
Total 2510 Fiscal Services				\$598,736.39

General Fund (10)

2511 Supervision of Fiscal Services - Head of Component

Elementary Secondary Federal Total

100 Personnel Services – Salaries				
100 Personnel Services – Salaries				100,533.91
Total Personnel Services – Salaries				\$100,533.91
200 Personnel Services – Employee Benefits				
210 Group Insurance – Contracted Provider				277.27
220 Social Security Contributions				7,298.83
230 PSERS Retirement Contributions				26,494.40
240 Tuition Reimbursement				2,975.00
260 Workers' Compensation				469.49
270 Group Insurance – Self-Insurance				39,052.40
Total Personnel Services – Employee Benefits				\$76,567.39
300 Purchased Professional and Technical Services				
310 Official / Administrative Services				9,700.00
324 Professional Educational Services – Employee Training and Development Services				698.75
340 Technical Services				9,403.66
Total Purchased Professional and Technical Services				\$19,802.41
500 Other Purchased Services				
520 Insurance – General				257.00
549 Other Advertising/Public Relations				2,984.30
580 Travel				1,018.87
Total Other Purchased Services				\$4,260.17
600 Supplies				
610 General Supplies				39,091.37
630 Food				228.59
640 Books and Periodicals				23.00
650 Supplies & Fees – Technology Related				25,129.30
Total Supplies				\$64,472.26
700 Property				
760 Equipment – Replacement				1,000.00
Total Property				\$1,000.00
800 Other Objects				
810 Dues and Fees				2,212.55
Total Other Objects				\$2,212.55
Total 2511 Supervision of Fiscal Services - Head of Component				\$268,848.69

General Fund (10)

2513 Receiving and Disbursing Funds Services

Elementary

Secondary

Federal

Total

100 Personnel Services – Salaries

100 Personnel Services – Salaries

45,089.68

Total Personnel Services – Salaries

\$45,089.68

200 Personnel Services – Employee Benefits

210 Group Insurance – Contracted Provider

157.70

220 Social Security Contributions

3,289.42

230 PSERS Retirement Contributions

11,351.36

250 Unemployment Compensation

3,549.80

260 Workers' Compensation

210.53

270 Group Insurance – Self-Insurance

18,780.00

Total Personnel Services – Employee Benefits

\$37,338.81

800 Other Objects

810 Dues and Fees

2,997.96

Total Other Objects

\$2,997.96

Total 2513 Receiving and Disbursing Funds Services

\$85,426.45

General Fund (10)

2514 Payroll Services

100 Personnel Services – Salaries

100 Personnel Services – Salaries

Elementary

Secondary

Federal

Total

27,024.45

Total Personnel Services – Salaries

\$27,024.45

200 Personnel Services – Employee Benefits

210 Group Insurance – Contracted Provider

28.32

220 Social Security Contributions

1,874.02

230 PSERS Retirement Contributions

6,983.15

260 Workers' Compensation

126.17

270 Group Insurance – Self-Insurance

16,632.00

Total Personnel Services – Employee Benefits

\$25,643.66

Total 2514 Payroll Services

\$52,668.11

General Fund (10)

	<u>Elementary</u>	<u>Secondary</u>	<u>Federal</u>	<u>Total</u>
2515 Financial Accounting Services				
100 Personnel Services – Salaries				
100 Personnel Services – Salaries				53,699.82
Total Personnel Services – Salaries				\$53,699.82
200 Personnel Services – Employee Benefits				
210 Group Insurance – Contracted Provider				343.43
220 Social Security Contributions				3,908.62
230 PSERS Retirement Contributions				13,876.15
260 Workers' Compensation				250.76
270 Group Insurance – Self-Insurance				18,630.00
Total Personnel Services – Employee Benefits				\$37,008.96
Total 2515 Financial Accounting Services				\$90,708.78

General Fund (10)

2516 Internal Auditing Services

Elementary

Secondary

Federal

Total

300 Purchased Professional and Technical Services

330 Other Professional Services

33,700.00

Total Purchased Professional and Technical Services

\$33,700.00

Total 2516 Internal Auditing Services

\$33,700.00

General Fund (10)

2519 Other Fiscal Services

Elementary

Secondary

Federal

Total

800 Other Objects

810 Dues and Fees

67,384.36

Total Other Objects

\$67,384.36

Total 2519 Other Fiscal Services

\$67,384.36

General Fund (10)

2530 Warehousing and Distributing Services

Elementary

Secondary

Federal

Total

100 Personnel Services – Salaries

100 Personnel Services – Salaries

26,349.08

Total Personnel Services – Salaries

\$26,349.08

200 Personnel Services – Employee Benefits

220 Social Security Contributions

2,011.69

230 PSERS Retirement Contributions

6,808.60

260 Workers’ Compensation

123.01

270 Group Insurance – Self-Insurance

672.00

Total Personnel Services – Employee Benefits

\$9,615.30

Total 2530 Warehousing and Distributing Services

\$35,964.38

General Fund (10)

2540 Printing, Publishing and Duplicating Services

Elementary

Secondary

Federal

Total

100 Personnel Services – Salaries

100 Personnel Services – Salaries

12,210.00

Total Personnel Services – Salaries

\$12,210.00

200 Personnel Services – Employee Benefits

220 Social Security Contributions

934.08

230 PSERS Retirement Contributions

3,155.07

260 Workers' Compensation

57.02

Total Personnel Services – Employee Benefits

\$4,146.17

600 Supplies

610 General Supplies

10,743.34

Total Supplies

\$10,743.34

Total 2540 Printing, Publishing and Duplicating Services

\$27,099.51

General Fund (10)

2600 Operation and Maintenance of Plant Services

Elementary

Secondary

Federal

Total

100 Personnel Services – Salaries

100 Personnel Services – Salaries 1,223,192.25

Total Personnel Services – Salaries \$1,223,192.25

200 Personnel Services – Employee Benefits

210 Group Insurance – Contracted Provider 1,605.69

220 Social Security Contributions 90,748.44

230 PSERS Retirement Contributions 313,460.14

250 Unemployment Compensation 1,114.92

260 Workers' Compensation 5,711.15

270 Group Insurance – Self-Insurance 447,970.00

290 Other Current Employee Benefits 1,200.00

Total Personnel Services – Employee Benefits \$861,810.34

400 Purchased Property Services

410 Cleaning Services 56,870.54

420 Utility Services 742,377.36

430 Repairs and Maintenance Services 391,599.85

440 Rentals 3,846.60

460 Extermination Services 5,215.16

490 Other Purchased Property Services 8,553.25

Total Purchased Property Services \$1,208,462.76

500 Other Purchased Services

522 Automotive Liability Insurance 11,829.00

523 General Property and Liability Insurance 117,386.50

530 Communications 112,319.09

580 Travel 592.39

Total Other Purchased Services \$242,126.98

600 Supplies

610 General Supplies 268,033.73 268,033.73

620 Energy 180,748.23

Total Supplies \$268,033.73 \$448,781.96

700 Property

750 Equipment – Original and Additional 3,099.00

760 Equipment – Replacement 7,819.71

Total Property \$10,918.71

800 Other Objects

810 Dues and Fees 265.00

Total Other Objects \$265.00

Total 2600 Operation and Maintenance of Plant Services \$268,033.73 \$3,995,558.00

General Fund (10)

2610 Supervision of Operation and Maintenance of Plant Services

Elementary

Secondary

Federal

Total

100 Personnel Services – Salaries

100 Personnel Services – Salaries

97,424.06

Total Personnel Services – Salaries

\$97,424.06

200 Personnel Services – Employee Benefits

210 Group Insurance – Contracted Provider

515.04

220 Social Security Contributions

7,310.13

230 PSERS Retirement Contributions

25,174.42

260 Workers' Compensation

454.94

270 Group Insurance – Self-Insurance

24,324.00

290 Other Current Employee Benefits

1,200.00

Total Personnel Services – Employee Benefits

\$58,978.53

Total 2610 Supervision of Operation and Maintenance of Plant Services

\$156,402.59

General Fund (10)

2611 Supervision of Operation and Maintenance of Plant Services – Head of Component

Elementary

Secondary

Federal

Total

100 Personnel Services – Salaries

100 Personnel Services – Salaries

97,424.06

Total Personnel Services – Salaries

\$97,424.06

200 Personnel Services – Employee Benefits

210 Group Insurance – Contracted Provider

515.04

220 Social Security Contributions

7,310.13

230 PSERS Retirement Contributions

25,174.42

260 Workers' Compensation

454.94

270 Group Insurance – Self-Insurance

24,324.00

290 Other Current Employee Benefits

1,200.00

Total Personnel Services – Employee Benefits

\$58,978.53

Total 2611 Supervision of Operation and Maintenance of Plant Services – Head of Component

\$156,402.59

General Fund (10)

2620 Operation of Buildings Services

Elementary Secondary Federal Total

100	<u>Personnel Services – Salaries</u>			
	100 Personnel Services – Salaries			896,422.01
Total Personnel Services – Salaries				\$896,422.01
200	<u>Personnel Services – Employee Benefits</u>			
	210 Group Insurance – Contracted Provider			847.41
	220 Social Security Contributions			66,444.30
	230 PSERS Retirement Contributions			229,022.73
	250 Unemployment Compensation			1,114.92
	260 Workers' Compensation			4,185.38
	270 Group Insurance – Self-Insurance			312,666.00
Total Personnel Services – Employee Benefits				\$614,280.74
400	<u>Purchased Property Services</u>			
	410 Cleaning Services			32,769.88
	420 Utility Services			742,377.36
	430 Repairs and Maintenance Services			177,298.10
	440 Rentals			3,747.60
	460 Extermination Services			5,215.16
Total Purchased Property Services				\$961,408.10
500	<u>Other Purchased Services</u>			
	523 General Property and Liability Insurance			117,386.50
	530 Communications			112,319.09
	580 Travel			592.39
Total Other Purchased Services				\$230,297.98
600	<u>Supplies</u>			
	610 General Supplies		253,042.60	253,042.60
	620 Energy			164,313.36
Total Supplies				\$417,355.96
700	<u>Property</u>			
	750 Equipment – Original and Additional			999.00
	760 Equipment – Replacement			5,314.71
Total Property				\$6,313.71
Total 2620 Operation of Buildings Services			\$253,042.60	\$3,126,078.50

General Fund (10)

2630 Care and Upkeep of Grounds Services

Elementary Secondary Federal Total

400 Purchased Property Services

410	Cleaning Services			21,981.78
430	Repairs and Maintenance Services			2,891.85
440	Rentals			99.00

Total Purchased Property Services **\$24,972.63**

600 Supplies

610	General Supplies		11,978.30	11,978.30
-----	------------------	--	-----------	-----------

Total Supplies **\$11,978.30** **\$11,978.30**

700 Property

750	Equipment – Original and Additional			2,100.00
760	Equipment – Replacement			2,505.00

Total Property **\$4,605.00**

800 Other Objects

810	Dues and Fees			265.00
-----	---------------	--	--	--------

Total Other Objects **\$265.00**

Total 2630 Care and Upkeep of Grounds Services **\$11,978.30** **\$41,820.93**

General Fund (10)

	<u>Elementary</u>	<u>Secondary</u>	<u>Federal</u>	<u>Total</u>
2640 Care and Upkeep of Equipment Services				
100 Personnel Services – Salaries				
100 Personnel Services – Salaries				229,346.18
Total Personnel Services – Salaries				\$229,346.18
200 Personnel Services – Employee Benefits				
210 Group Insurance – Contracted Provider				243.24
220 Social Security Contributions				16,994.01
230 PSERS Retirement Contributions				59,262.99
260 Workers' Compensation				1,070.83
270 Group Insurance – Self-Insurance				110,980.00
Total Personnel Services – Employee Benefits				\$188,551.07
400 Purchased Property Services				
410 Cleaning Services				2,118.88
430 Repairs and Maintenance Services				199,071.72
Total Purchased Property Services				\$201,190.60
600 Supplies				
610 General Supplies		49.33		49.33
Total Supplies		\$49.33		\$49.33
Total 2640 Care and Upkeep of Equipment Services		\$49.33		\$619,137.18

General Fund (10)

	<u>Elementary</u>	<u>Secondary</u>	<u>Federal</u>	<u>Total</u>
2650 Vehicle Operation and Maintenance Services (Other Than Student Transportation Vehicles)				
400 <u>Purchased Property Services</u>				
430 Repairs and Maintenance Services				12,338.18
Total Purchased Property Services				\$12,338.18
500 <u>Other Purchased Services</u>				
522 Automotive Liability Insurance				11,829.00
Total Other Purchased Services				\$11,829.00
600 <u>Supplies</u>				
610 General Supplies		787.97		787.97
620 Energy				16,434.87
Total Supplies		\$787.97		\$17,222.84
Total 2650 Vehicle Operation and Maintenance Services (Other Than Student Transportation Vehicles)		\$787.97		\$41,390.02

LEA : 112671803 Dover Area SD

Printed 11/21/2016 12:09:36 PM

General Fund (10)

2660 Safety and Security Services

Elementary

Secondary

Federal

Total

400 Purchased Property Services

490 Other Purchased Property Services

8,553.25

Total Purchased Property Services

\$8,553.25

600 Supplies

610 General Supplies

2,175.53

2,175.53

Total Supplies

\$2,175.53

\$2,175.53

Total 2660 Safety and Security Services

\$2,175.53

\$10,728.78

General Fund (10)

2700 Student Transportation Services

Elementary Secondary Federal Total

100	<u>Personnel Services – Salaries</u>			
	100 Personnel Services – Salaries			21,475.84
Total Personnel Services – Salaries				\$21,475.84
200	<u>Personnel Services – Employee Benefits</u>			
	210 Group Insurance – Contracted Provider			59.97
	220 Social Security Contributions			1,579.63
	230 PSERS Retirement Contributions			4,518.13
	260 Workers' Compensation			100.19
	270 Group Insurance – Self-Insurance			33,868.84
Total Personnel Services – Employee Benefits				\$40,126.76
300	<u>Purchased Professional and Technical Services</u>			
	340 Technical Services			4,450.50
Total Purchased Professional and Technical Services				\$4,450.50
500	<u>Other Purchased Services</u>			
	513 Contracted Carriers			2,813,779.37
	516 Student Transportation Services From the IU			403,183.17
	530 Communications			10,787.79
Total Other Purchased Services				\$3,227,750.33
600	<u>Supplies</u>			
	620 Energy			8,058.06
Total Supplies				\$8,058.06
800	<u>Other Objects</u>			
	810 Dues and Fees			75.00
Total Other Objects				\$75.00
Total 2700 Student Transportation Services				\$3,301,936.49

General Fund (10)

2710 Supervision of Student Transportation Services

Elementary

Secondary

Federal

Total

100 Personnel Services – Salaries

100 Personnel Services – Salaries

17,485.09

Total Personnel Services – Salaries

\$17,485.09

200 Personnel Services – Employee Benefits

210 Group Insurance – Contracted Provider

59.97

220 Social Security Contributions

1,274.32

230 PSERS Retirement Contributions

4,518.13

260 Workers' Compensation

81.59

270 Group Insurance – Self-Insurance

33,868.84

Total Personnel Services – Employee Benefits

\$39,802.85

800 Other Objects

810 Dues and Fees

75.00

Total Other Objects

\$75.00

Total 2710 Supervision of Student Transportation Services

\$57,362.94

General Fund (10)

	<u>Elementary</u>	<u>Secondary</u>	<u>Federal</u>	<u>Total</u>
2711 Supervision of Student Transportation Services – Head of Component				
100 Personnel Services – Salaries				
100 Personnel Services – Salaries				17,485.09
Total Personnel Services – Salaries				\$17,485.09
200 Personnel Services – Employee Benefits				
210 Group Insurance – Contracted Provider				59.97
220 Social Security Contributions				1,274.32
230 PSERS Retirement Contributions				4,518.13
260 Workers' Compensation				81.59
270 Group Insurance – Self-Insurance				33,868.84
Total Personnel Services – Employee Benefits				\$39,802.85
800 Other Objects				
810 Dues and Fees				75.00
Total Other Objects				\$75.00
Total 2711 Supervision of Student Transportation Services – Head of Component				\$57,362.94

LEA : 112671803 Dover Area SD

Printed 11/21/2016 12:09:36 PM

General Fund (10)

2720 Vehicle Operation Services

Elementary

Secondary

Federal

Total

500 Other Purchased Services

513 Contracted Carriers

2,529,109.90

Total Other Purchased Services

\$2,529,109.90

Total 2720 Vehicle Operation Services

\$2,529,109.90

General Fund (10)

2730 Monitoring Services

Elementary

Secondary

Federal

Total

100 Personnel Services – Salaries

100 Personnel Services – Salaries

3,990.75

Total Personnel Services – Salaries

\$3,990.75

200 Personnel Services – Employee Benefits

220 Social Security Contributions

305.31

260 Workers' Compensation

18.60

Total Personnel Services – Employee Benefits

\$323.91

500 Other Purchased Services

530 Communications

10,787.79

Total Other Purchased Services

\$10,787.79

Total 2730 Monitoring Services

\$15,102.45

General Fund (10)

	<u>Elementary</u>	<u>Secondary</u>	<u>Federal</u>	<u>Total</u>
2740 Vehicle Servicing and Maintenance Services				
300 <u>Purchased Professional and Technical Services</u>				
340 Technical Services				4,450.50
Total Purchased Professional and Technical Services				\$4,450.50
600 <u>Supplies</u>				
620 Energy				8,058.06
Total Supplies				\$8,058.06
Total 2740 Vehicle Servicing and Maintenance Services				\$12,508.56

LEA : 112671803 Dover Area SD

Printed 11/21/2016 12:09:36 PM

General Fund (10)

	<u>Elementary</u>	<u>Secondary</u>	<u>Federal</u>	<u>Total</u>
2750 Nonpublic Transportation				
500 <u>Other Purchased Services</u>				
513 Contracted Carriers				284,669.47
Total Other Purchased Services				\$284,669.47
Total 2750 Nonpublic Transportation				\$284,669.47

LEA : 112671803 Dover Area SD

Printed 11/21/2016 12:09:36 PM

General Fund (10)

2790 Other Student Transportation Services

Elementary

Secondary

Federal

Total

500 Other Purchased Services

516 Student Transportation Services From the IU

403,183.17

Total Other Purchased Services

\$403,183.17

Total 2790 Other Student Transportation Services

\$403,183.17

General Fund (10)

2800 Support Services – Central

Elementary Secondary Federal Total

100	<u>Personnel Services – Salaries</u>			
	100 Personnel Services – Salaries			357,920.64
Total Personnel Services – Salaries				\$357,920.64
200	<u>Personnel Services – Employee Benefits</u>			
	210 Group Insurance – Contracted Provider			860.76
	220 Social Security Contributions			26,613.45
	230 PSERS Retirement Contributions			88,193.91
	250 Unemployment Compensation			11,391.68
	260 Workers' Compensation			1,671.13
	270 Group Insurance – Self-Insurance			146,578.00
	290 Other Current Employee Benefits			1,200.00
Total Personnel Services – Employee Benefits				\$276,508.93
300	<u>Purchased Professional and Technical Services</u>			
	324 Professional Educational Services – Employee Training and Development Services			550.00
	330 Other Professional Services			176,106.10
Total Purchased Professional and Technical Services				\$176,656.10
600	<u>Supplies</u>			
	610 General Supplies			699.15
	630 Food			6,928.34
Total Supplies				\$7,627.49
700	<u>Property</u>			
	750 Equipment – Original and Additional			47,316.00
	760 Equipment – Replacement			67.43
Total Property				\$47,383.43
800	<u>Other Objects</u>			
	810 Dues and Fees			175.00
Total Other Objects				\$175.00
Total 2800 Support Services – Central				\$866,271.59

General Fund (10)

2810 Planning, Research, Development and Evaluation Services

Elementary

Secondary

Federal

Total

300 Purchased Professional and Technical Services

330 Other Professional Services

122,648.17

Total Purchased Professional and Technical Services

\$122,648.17

700 Property

750 Equipment – Original and Additional

47,316.00

760 Equipment – Replacement

67.43

Total Property

\$47,383.43

Total 2810 Planning, Research, Development and Evaluation Services

\$170,031.60

General Fund (10)

2830 Staff Services

	<u>Elementary</u>	<u>Secondary</u>	<u>Federal</u>	<u>Total</u>
100 Personnel Services – Salaries				
100 Personnel Services – Salaries				82,631.19
Total Personnel Services – Salaries				\$82,631.19
200 Personnel Services – Employee Benefits				
210 Group Insurance – Contracted Provider				453.00
220 Social Security Contributions				6,133.87
230 PSERS Retirement Contributions				21,351.88
260 Workers' Compensation				385.85
270 Group Insurance – Self-Insurance				24,324.00
290 Other Current Employee Benefits				1,200.00
Total Personnel Services – Employee Benefits				\$53,848.60
300 Purchased Professional and Technical Services				
324 Professional Educational Services – Employee Training and Development Services				550.00
330 Other Professional Services				53,457.93
Total Purchased Professional and Technical Services				\$54,007.93
600 Supplies				
610 General Supplies				699.15
630 Food				6,928.34
Total Supplies				\$7,627.49
800 Other Objects				
810 Dues and Fees				175.00
Total Other Objects				\$175.00
Total 2830 Staff Services				\$198,290.21

General Fund (10)

2831 Supervision of Staff Services

Elementary

Secondary

Federal

Total

100 Personnel Services – Salaries

100 Personnel Services – Salaries

82,631.19

Total Personnel Services – Salaries

\$82,631.19

200 Personnel Services – Employee Benefits

210 Group Insurance – Contracted Provider

453.00

220 Social Security Contributions

6,133.87

230 PSERS Retirement Contributions

21,351.88

260 Workers' Compensation

385.85

270 Group Insurance – Self-Insurance

24,324.00

290 Other Current Employee Benefits

1,200.00

Total Personnel Services – Employee Benefits

\$53,848.60

300 Purchased Professional and Technical Services

324 Professional Educational Services – Employee Training and Development Services

550.00

330 Other Professional Services

6,600.00

Total Purchased Professional and Technical Services

\$7,150.00

800 Other Objects

810 Dues and Fees

175.00

Total Other Objects

\$175.00

Total 2831 Supervision of Staff Services

\$143,804.79

General Fund (10)

2834 Staff Development Services – Non-Instructional, Certified Staff Only

Elementary

Secondary

Federal

Total

300 Purchased Professional and Technical Services

330 Other Professional Services

43,357.93

Total Purchased Professional and Technical Services

\$43,357.93

600 Supplies

610 General Supplies

699.15

630 Food

6,928.34

Total Supplies

\$7,627.49

Total 2834 Staff Development Services – Non-Instructional, Certified Staff Only

\$50,985.42

LEA : 112671803 Dover Area SD

Printed 11/21/2016 12:09:36 PM

General Fund (10)

2835 Health Services

300 Purchased Professional and Technical Services

330 Other Professional Services

Elementary

Secondary

Federal

Total

3,500.00

Total Purchased Professional and Technical Services

\$3,500.00

Total 2835 Health Services

\$3,500.00

General Fund (10)

2840 Data Processing Services

Elementary

Secondary

Federal

Total

100 Personnel Services – Salaries

100 Personnel Services – Salaries

275,289.45

Total Personnel Services – Salaries

\$275,289.45

200 Personnel Services – Employee Benefits

210 Group Insurance – Contracted Provider

407.76

220 Social Security Contributions

20,479.58

230 PSERS Retirement Contributions

66,842.03

250 Unemployment Compensation

11,391.68

260 Workers' Compensation

1,285.28

270 Group Insurance – Self-Insurance

122,254.00

Total Personnel Services – Employee Benefits

\$222,660.33

Total 2840 Data Processing Services

\$497,949.78

LEA : 112671803 Dover Area SD

Printed 11/21/2016 12:09:36 PM

General Fund (10)

2900 Other Support Services

Elementary

Secondary

Federal

Total

500 Other Purchased Services

595 IU Payments By Withholding

27,824.92

Total Other Purchased Services

\$27,824.92

Total 2900 Other Support Services

\$27,824.92

General Fund (10)

2910 Support Services Not Listed Elsewhere In the 2000 Series

Elementary

Secondary

Federal

Total

500 Other Purchased Services

595 IU Payments By Withholding

27,824.92

Total Other Purchased Services

\$27,824.92

Total 2910 Support Services Not Listed Elsewhere In the 2000 Series

\$27,824.92

General Fund (10)

3000 Operation of Non-Instructional Services

Total

100 Personnel Services – Salaries

100 Personnel Services – Salaries 474,881.73

Total Personnel Services – Salaries

\$474,881.73

200 Personnel Services – Employee Benefits

210 Group Insurance – Contracted Provider 525.84

220 Social Security Contributions 36,134.48

230 PSERS Retirement Contributions 117,666.52

250 Unemployment Compensation 1,421.50

260 Workers’ Compensation 2,217.82

270 Group Insurance – Self-Insurance 32,652.00

Total Personnel Services – Employee Benefits

\$190,618.16

300 Purchased Professional and Technical Services

330 Other Professional Services 12,612.00

340 Technical Services 38,165.00

390 Other Purchased Professional and Technical Services 669.00

Total Purchased Professional and Technical Services

\$51,446.00

400 Purchased Property Services

430 Repairs and Maintenance Services 20,347.25

Total Purchased Property Services

\$20,347.25

500 Other Purchased Services

510 Student Transportation Services 63,810.40

550 Printing and Binding 2,926.00

580 Travel 9,071.60

Total Other Purchased Services

\$75,808.00

600 Supplies

610 General Supplies 112,988.22

630 Food 1,879.69

Total Supplies

\$114,867.91

700 Property

750 Equipment – Original and Additional 32,282.48

760 Equipment – Replacement 16,873.00

Total Property

\$49,155.48

800 Other Objects

810 Dues and Fees 3,578.12

890 Miscellaneous Expenditures 3,438.19

Total Other Objects

\$7,016.31

Total 3000 Operation of Non-Instructional Services

\$984,140.84

General Fund (10)

3200 Student Activities

Elementary Secondary Federal Total

100	<u>Personnel Services – Salaries</u>			
	100 Personnel Services – Salaries			474,881.73
Total Personnel Services – Salaries				\$474,881.73
200	<u>Personnel Services – Employee Benefits</u>			
	210 Group Insurance – Contracted Provider			525.84
	220 Social Security Contributions			36,134.48
	230 PSERS Retirement Contributions			117,666.52
	250 Unemployment Compensation			1,421.50
	260 Workers' Compensation			2,217.82
	270 Group Insurance – Self-Insurance			32,652.00
Total Personnel Services – Employee Benefits				\$190,618.16
300	<u>Purchased Professional and Technical Services</u>			
	330 Other Professional Services			12,612.00
	340 Technical Services			38,165.00
	390 Other Purchased Professional and Technical Services			669.00
Total Purchased Professional and Technical Services				\$51,446.00
400	<u>Purchased Property Services</u>			
	430 Repairs and Maintenance Services			20,347.25
Total Purchased Property Services				\$20,347.25
500	<u>Other Purchased Services</u>			
	510 Student Transportation Services			63,810.40
	550 Printing and Binding			2,926.00
	580 Travel			9,071.60
Total Other Purchased Services				\$75,808.00
600	<u>Supplies</u>			
	610 General Supplies			112,988.22
	630 Food			1,879.69
Total Supplies				\$114,867.91
700	<u>Property</u>			
	750 Equipment – Original and Additional			32,282.48
	760 Equipment – Replacement			16,873.00
Total Property				\$49,155.48
800	<u>Other Objects</u>			
	810 Dues and Fees			3,578.12
	890 Miscellaneous Expenditures			3,438.19
Total Other Objects				\$7,016.31
Total 3200 Student Activities				\$984,140.84

LEA : 112671803 Dover Area SD

Printed 11/21/2016 12:09:43 PM

General Fund (10)

5000 Other Expenditures and Financing Uses

Total

800 Other Objects

830 Interest	1,364,456.31
880 Refunds of Prior Years' Receipts	42,131.38

Total Other Objects	\$1,406,587.69
----------------------------	-----------------------

900 Other Uses of Funds

910 Redemption of Principal	20,773,000.00
932 Capital Reserve Fund Transfers Applicable To Fund 32	4,034,000.00

Total Other Uses of Funds	\$24,807,000.00
----------------------------------	------------------------

Total 5000 Other Expenditures and Financing Uses	\$26,213,587.69
---	------------------------

General Fund (10)

5100 Debt Service / Other Expenditures and Financing Uses

Elementary

Secondary

Federal

Total

800 Other Objects

830 Interest 1,364,456.31

880 Refunds of Prior Years' Receipts 42,131.38

Total Other Objects \$1,406,587.69

900 Other Uses of Funds

910 Redemption of Principal 20,773,000.00

Total Other Uses of Funds \$20,773,000.00

Total 5100 Debt Service / Other Expenditures and Financing Uses \$22,179,587.69

LEA : 112671803 Dover Area SD

Printed 11/21/2016 12:09:43 PM

General Fund (10)

	<u>Elementary</u>	<u>Secondary</u>	<u>Federal</u>	<u>Total</u>
5110 Debt Service				
800 Other Objects				
830 Interest				1,078,948.80
Total Other Objects				\$1,078,948.80
900 Other Uses of Funds				
910 Redemption of Principal				3,393,000.00
Total Other Uses of Funds				\$3,393,000.00
Total 5110 Debt Service				\$4,471,948.80

LEA : 112671803 Dover Area SD

Printed 11/21/2016 12:09:43 PM

General Fund (10)

	<u>Elementary</u>	<u>Secondary</u>	<u>Federal</u>	<u>Total</u>
5120 Debt Service – Refunded Bonds				
800 Other Objects				
830 Interest				285,507.51
Total Other Objects				\$285,507.51
900 Other Uses of Funds				
910 Redemption of Principal				17,380,000.00
Total Other Uses of Funds				\$17,380,000.00
Total 5120 Debt Service – Refunded Bonds				\$17,665,507.51

LEA : 112671803 Dover Area SD

Printed 11/21/2016 12:09:43 PM

General Fund (10)

5130 Refund of Prior Year Revenues / Receipts

Elementary

Secondary

Federal

Total

800 Other Objects

880 Refunds of Prior Years' Receipts

42,131.38

Total Other Objects

\$42,131.38

Total 5130 Refund of Prior Year Revenues / Receipts

\$42,131.38

General Fund (10)

5200 Interfund Transfers – Out

Elementary

Secondary

Federal

Total

900 Other Uses of Funds

932 Capital Reserve Fund Transfers Applicable To Fund 32

4,034,000.00

Total Other Uses of Funds

\$4,034,000.00

Total 5200 Interfund Transfers – Out

\$4,034,000.00

LEA : 112671803 Dover Area SD

Printed 11/21/2016 12:09:43 PM

General Fund (10)

5230 Capital Projects Fund Transfers

Elementary

Secondary

Federal

Total

900 Other Uses of Funds

932 Capital Reserve Fund Transfers Applicable To Fund 32

4,034,000.00

Total Other Uses of Funds

\$4,034,000.00

Total 5230 Capital Projects Fund Transfers

\$4,034,000.00

LEA : 112671803 Dover Area SD

Printed 11/21/2016 12:09:39 PM

Capital Reserve Fund - § 1431 (32)

2000 Support Services

Total

300 Purchased Professional and Technical Services

340 Technical Services 264,097.22

Total Purchased Professional and Technical Services

\$264,097.22

400 Purchased Property Services

430 Repairs and Maintenance Services 491,873.22

450 Construction Services 553,856.00

Total Purchased Property Services

\$1,045,729.22

700 Property

760 Equipment – Replacement 43,145.00

Total Property

\$43,145.00

800 Other Objects

810 Dues and Fees 245.00

Total Other Objects

\$245.00

Total 2000 Support Services

\$1,353,216.44

LEA : 112671803 Dover Area SD

Printed 11/21/2016 12:09:39 PM

Capital Reserve Fund - § 1431 (32)

2200 Support Services – Instructional Staff

Elementary

Secondary

Federal

Total

300 Purchased Professional and Technical Services

340 Technical Services

264,097.22

264,097.22

Total Purchased Professional and Technical Services

\$264,097.22

\$264,097.22

700 Property

760 Equipment – Replacement

736.00

736.00

Total Property

\$736.00

\$736.00

Total 2200 Support Services – Instructional Staff

\$264,833.22

\$264,833.22

LEA : 112671803 Dover Area SD

Printed 11/21/2016 12:09:39 PM

Capital Reserve Fund - § 1431 (32)

2240 Computer-Assisted Instruction Support Services

Elementary

Secondary

Federal

Total

300 Purchased Professional and Technical Services

340 Technical Services

264,097.22

264,097.22

Total Purchased Professional and Technical Services

\$264,097.22

\$264,097.22

700 Property

760 Equipment – Replacement

736.00

736.00

Total Property

\$736.00

\$736.00

Total 2240 Computer-Assisted Instruction Support Services

\$264,833.22

\$264,833.22

LEA : 112671803 Dover Area SD

Printed 11/21/2016 12:09:39 PM

Capital Reserve Fund - § 1431 (32)

2500 Support Services – Business

800 Other Objects

810 Dues and Fees

Total Other Objects

Total 2500 Support Services – Business

Elementary

Secondary

Federal

Total

245.00

\$245.00

\$245.00

LEA : 112671803 Dover Area SD

Printed 11/21/2016 12:09:39 PM

Capital Reserve Fund - § 1431 (32)

2510 Fiscal Services

Elementary

Secondary

Federal

Total

800 Other Objects

810 Dues and Fees

245.00

Total Other Objects

\$245.00

Total 2510 Fiscal Services

\$245.00

LEA : 112671803 Dover Area SD

Printed 11/21/2016 12:09:39 PM

Capital Reserve Fund - § 1431 (32)

2519 Other Fiscal Services

Elementary

Secondary

Federal

Total

800 Other Objects

810 Dues and Fees

245.00

Total Other Objects

\$245.00

Total 2519 Other Fiscal Services

\$245.00

LEA : 112671803 Dover Area SD

Printed 11/21/2016 12:09:39 PM

Capital Reserve Fund - § 1431 (32)

2600 Operation and Maintenance of Plant Services

Elementary

Secondary

Federal

Total

400 Purchased Property Services

430 Repairs and Maintenance Services

491,873.22

450 Construction Services

553,856.00

Total Purchased Property Services

\$1,045,729.22

700 Property

760 Equipment – Replacement

42,409.00

Total Property

\$42,409.00

Total 2600 Operation and Maintenance of Plant Services

\$1,088,138.22

LEA : 112671803 Dover Area SD

Printed 11/21/2016 12:09:39 PM

Capital Reserve Fund - § 1431 (32)

2620 Operation of Buildings Services

Elementary

Secondary

Federal

Total

400 Purchased Property Services

430 Repairs and Maintenance Services

482,910.22

450 Construction Services

553,856.00

Total Purchased Property Services

\$1,036,766.22

700 Property

760 Equipment – Replacement

42,409.00

Total Property

\$42,409.00

Total 2620 Operation of Buildings Services

\$1,079,175.22

LEA : 112671803 Dover Area SD

Printed 11/21/2016 12:09:39 PM

Capital Reserve Fund - § 1431 (32)

2630 Care and Upkeep of Grounds Services

Elementary

Secondary

Federal

Total

400 Purchased Property Services

430 Repairs and Maintenance Services

8,963.00

Total Purchased Property Services

\$8,963.00

Total 2630 Care and Upkeep of Grounds Services

\$8,963.00

LEA : 112671803 Dover Area SD

Printed 11/21/2016 12:09:42 PM

Capital Reserve Fund - § 1431 (32)

4000 Facilities Acquisition, Construction and Improvement Services

Total

400 Purchased Property Services

430 Repairs and Maintenance Services

19,777.00

Total Purchased Property Services

\$19,777.00

Total 4000 Facilities Acquisition, Construction and Improvement Services

\$19,777.00

LEA : 112671803 Dover Area SD

Printed 11/21/2016 12:09:42 PM

Capital Reserve Fund - § 1431 (32)

4200 Existing Site Improvement Services

Elementary

Secondary

Federal

Total

400 Purchased Property Services

430 Repairs and Maintenance Services

19,777.00

Total Purchased Property Services

\$19,777.00

Total 4200 Existing Site Improvement Services

\$19,777.00

	<u>General Fund(10)</u>	<u>Public Purpose Trust(27)</u>	<u>Other Compt Approved (28)</u>	<u>Athletic / Activity(29)</u>	<u>Capital Reserve (690, 1850)(31)</u>
1000 Instruction					
1100 Regular Programs - Elementary / Secondary	24,753,609.01				
1200 Special Programs - Elementary / Secondary	6,346,397.53				
1300 Vocational Education	3,343,756.63				
1400 Other Instructional Programs - Elementary / Secondary	691,102.67				
1700 Higher Education Programs	40,500.00				
Total Instruction	\$35,175,365.84				
2000 Support Services					
2100 Support Services - Students	1,779,572.78				
2200 Support Services - Instructional Staff	2,064,640.01				
2300 Support Services - Administration	2,469,066.88				
2400 Support Services - Pupil Health	663,333.23				
2500 Support Services - Business	661,800.28				
2600 Operation and Maintenance of Plant Services	3,995,558.00				
2700 Student Transportation Services	3,301,936.49				
2800 Support Services - Central	866,271.59				
2900 Other Support Services	27,824.92				
Total Support Services	\$15,830,004.18				
3000 Operation of Non-Instructional Services					
3200 Student Activities	984,140.84				
Total Operation of Non-Instructional Services	\$984,140.84				
4000 Facilities Acquisition, Construction and Improvement Services					
4200 Existing Site Improvement Services					
Total Facilities Acquisition, Construction and Improvement Services					
5000 Other Expenditures and Financing Uses					
5100 Debt Service / Other Expenditures and Financing Uses	22,179,587.69				
5200 Interfund Transfers - Out	4,034,000.00				
Total Other Expenditures and Financing Uses	\$26,213,587.69				
TOTAL ACTUAL EXPENDITURES & OTHER FINANCING USES	\$78,203,098.55				

	<u>Capital Reserve (1431)(32)</u>	<u>Other Capital Projects Fund(39)</u>	<u>Debt Service(40)</u>	<u>Permanent(90)</u>	<u>Total</u>
1000 Instruction					
1100 Regular Programs - Elementary / Secondary					24,753,609.01
1200 Special Programs - Elementary / Secondary					6,346,397.53
1300 Vocational Education					3,343,756.63
1400 Other Instructional Programs - Elementary / Secondary					691,102.67
1700 Higher Education Programs					40,500.00
Total Instruction					\$35,175,365.84
2000 Support Services					
2100 Support Services - Students					1,779,572.78
2200 Support Services - Instructional Staff	264,833.22				2,329,473.23
2300 Support Services - Administration					2,469,066.88
2400 Support Services - Pupil Health					663,333.23
2500 Support Services - Business	245.00				662,045.28
2600 Operation and Maintenance of Plant Services	1,088,138.22				5,083,696.22
2700 Student Transportation Services					3,301,936.49
2800 Support Services - Central					866,271.59
2900 Other Support Services					27,824.92
Total Support Services	\$1,353,216.44				\$17,183,220.62
3000 Operation of Non-Instructional Services					
3200 Student Activities					984,140.84
Total Operation of Non-Instructional Services					\$984,140.84
4000 Facilities Acquisition, Construction and Improvement Services					
4200 Existing Site Improvement Services	19,777.00				19,777.00
Total Facilities Acquisition, Construction and Improvement Services	\$19,777.00				\$19,777.00
5000 Other Expenditures and Financing Uses					
5100 Debt Service / Other Expenditures and Financing Uses					22,179,587.69
5200 Interfund Transfers - Out					4,034,000.00
Total Other Expenditures and Financing Uses					\$26,213,587.69
TOTAL ACTUAL EXPENDITURES & OTHER FINANCING USES	\$1,372,993.44				\$79,576,091.99

LEA : 112671803 Dover Area SD

Printed 11/21/2016 12:09:52 PM

PSERS Salary Data (Salary Data should relate to the General Fund only)

Amount Description	Amount
Total Salary Base for salaries subject to PSERS withholding	23,349,295.50
Total Federally Funded salaries subject to PSERS withholding	315,882.50
	<hr/>

Title I Expenditure Data

Amount Description	Amount
Expenditures Funded with Current Title I Funds	456,385.00
Expenditures Funded with Carry over Title I Funds	
	<hr/>
Total Title I Expenditure Data	\$456,385.00
	<hr/>

Title I ARRA Amount

Amount Description	Amount
Portion of Total Title I Expenditures funded with ARRA Title I	
	<hr/>

Benefits for Staff Relative to Collective Bargaining Agreements

	OBJECT	COVERED	NOT COVERED	TOTAL
10 General Fund				
	211 Medical Insurance			
	212 Dental Insurance			
	215 Eye Care Insurance			
	216 Prescription Insurance			
	271 Self-Insurance Medical Benefits	5,598,743.53	410,954.00	6,009,697.53
	272 Self-Insurance Dental Benefits	220,771.04	17,670.00	238,441.04
	275 Self-Insurance Eye Care Benefits			
	276 Self-Insurance Prescription Benefits			
	FUND TOTAL	\$5,819,514.57	\$428,624.00	\$6,248,138.57
50 Enterprise Fund				
	211 Medical Insurance			
	212 Dental Insurance			
	215 Eye Care Insurance			
	216 Prescription Insurance			
	271 Self-Insurance Medical Benefits	140,506.08	14,373.00	154,879.08
	272 Self-Insurance Dental Benefits	5,578.56	561.00	6,139.56
	275 Self-Insurance Eye Care Benefits			
	276 Self-Insurance Prescription Benefits			
	FUND TOTAL	\$146,084.64	\$14,934.00	\$161,018.64
60 Internal Service Fund	No Self Insurance data to report			
	211 Medical Insurance			
	212 Dental Insurance			
	215 Eye Care Insurance			
	216 Prescription Insurance			
	271 Self-Insurance Medical Benefits			
	272 Self-Insurance Dental Benefits			
	275 Self-Insurance Eye Care Benefits			
	276 Self-Insurance Prescription Benefits			
	FUND TOTAL			
Total of All Funds		\$5,965,599.21	\$443,558.00	\$6,409,157.21

LEA : 112671803 Dover Area SD

Printed 11/21/2016 12:09:54 PM

Function	Special Education (Prior Year)	Nonspecial Education (Prior Year)	Total (Prior Year)	Special Education (Current Year)	Nonspecial Education (Current Year)	Total (Current Year)
2120 Guidance Services				216,854.25	1,028,829.56	1,245,683.81
2140 Psychological Services	211,504.32		211,504.32	393,051.09		393,051.09
2150 Speech Pathology and Audiology Services						
2160 Social Work Services						
2260 Instruction and Curriculum Development Services				1,520.83	519,888.20	521,409.03
2350 Legal and Accounting Services					63,129.50	63,129.50
2420 Medical Services				66,561.67	596,771.56	663,333.23
2440 Nursing Services						
2700 Student Transportation Services	572,752.97	2,291,011.86	2,863,764.83	762,586.02	1,766,523.88	2,529,109.90
Total	\$784,257.29	\$2,291,011.86	\$3,075,269.15	\$1,440,573.86	\$3,975,142.70	\$5,415,716.56

LEA : 112671803 Dover Area SD

Printed 11/21/2016 12:09:55 PM

(PRINCIPAL AMOUNTS ONLY)

ALL GOVERNMENTAL FUND TYPES

	Short-Term Borrowing	General Obligation Bonds/Notes	Authority Building Obligations	Other Long-Term Debt	Other Post-Employment Benefits (OPEB)	Compensated Absences	Net Pension Liability	Total
1. Debt at Beginning of Fiscal Year		46,608,000.00			785,572.00	1,227,883.00	67,248,000.00	115,869,455.00
2. Additional Debt Incurred During Year		17,838,000.00			166,979.00	196,080.00	7,384,000.00	25,585,059.00
3. Retirements and Repayments		20,773,000.00				144,889.00		20,917,889.00
4. Debt at End of Fiscal Year		43,673,000.00			952,551.00	1,279,074.00	74,632,000.00	120,536,625.00
5. Accreted Interest at End Of Fiscal Year								
6. Total Debt and Accreted Interest		43,673,000.00			952,551.00	1,279,074.00	74,632,000.00	120,536,625.00
7. Current Portion P&I - Due within 1 year		4,787,785.50				41,310.00		4,829,095.50
8. Interest Paid during current fiscal year		1,364,455.51						1,364,455.51

(PRINCIPAL AMOUNTS ONLY)

ALL PROPRIETARY FUND TYPES

- 1. Debt at Beginning of Fiscal Year
- 2. Additional Debt Incurred During Year
- 3. Retirements and Repayments
- 4. Debt at End of Fiscal Year
- 5. Accreted Interest at End Of Fiscal Year
- 6. Total Debt and Accreted Interest
- 7. Current Portion P&I - Due within 1 year
- 8. Interest Paid during current fiscal year

Total Principal and Interest Payments Made by Your School - All Funds

Function	Fund		Principal (910)	Principal (920)	Interest (830)	Total (Principal +Interest)	Misc Other Uses (990)
5110	10	General Fund	3,393,000.00		1,078,948.80	4,471,948.80	
5110	20	Special Revenue Funds					
5110	30	Capital Projects Funds					
5110	40	Debt Service Fund					
5110	90	Permanent Fund					
5120	10	General Fund	17,380,000.00		285,507.51	17,665,507.51	
5120	20	Special Revenue Funds					
5120	30	Capital Projects Funds					
5120	40	Debt Service Fund					

Total Debt Payments - Governmental Funds			\$20,773,000.00		\$1,364,456.31	\$22,137,456.31	
---	--	--	------------------------	--	-----------------------	------------------------	--

Function	Fund		Principal (910)	Principal (920)	Interest (830)	Total (Principal +Interest)
5110	50	Enterprise Fund				
5110	60	Internal Service Fund				
5120	50	Enterprise Fund				
5120	60	Internal Service Fund				

Total Debt Payments - Proprietary Funds							
--	--	--	--	--	--	--	--

Bond Details
Governmental Funds

Debt Category	Debt Issue Date (MM/YYYY)	Principal Amounts Only				Current Portion Due Within One Year (Principal and Interest)	Interest Paid During Fiscal Year
		Debt at Beginning of Fiscal Year	Additions	Reductions / Repayments	Debt at End of Fiscal Year		
General Obligation Bonds/Notes – CIB	11/2016	14,188,000.00		173,000.00	14,015,000.00	827,092.00	299,899.00
General Obligation Bonds/Notes – CIB	09/2010	17,380,000.00		17,380,000.00			285,507.51
General Obligation Bonds/Notes – CIB	04/2011	1,605,000.00		1,605,000.00			64,200.00
General Obligation Bonds/Notes – CIB	09/2011	9,745,000.00		190,000.00	9,555,000.00	470,381.00	279,181.00
General Obligation Bonds/Notes – CIB	02/2013	3,690,000.00		810,000.00	2,880,000.00	2,231,900.00	83,100.00
General Obligation Bonds/Notes – CIB	07/2015		9,750,000.00	200,000.00	9,550,000.00	792,625.00	202,583.00
General Obligation Bonds/Notes – CIB	08/2015		8,088,000.00	415,000.00	7,673,000.00	465,787.50	149,985.00
Compensated Absences		1,227,883.00	196,080.00	144,889.00	1,279,074.00	41,310.00	
Other Post-Employment Benefits (OPEB)		785,572.00	166,979.00		952,551.00		
Net Pension Liability		67,248,000.00	7,384,000.00		74,632,000.00		
Totals for Debt Entered:		\$115,869,455.00	\$25,585,059.00	\$20,917,889.00	\$120,536,625.00	\$4,829,095.50	\$1,364,455.51

General Fund (10)

Section 1: Tuition/Purchased Services as Reported within Expenditure Detail

	Amount
Tuition Reported in General Fund Expenditures 1000-560	3,420,961.85
Purchased Services in General Fund Expenditures 1000-594 and 1000-597	746.60
Section 1 Total	\$3,421,708.45

Section 2: Tuition Paid to Institution Types During Fiscal Year

	Tuition Paid For Nonspecial Education	Tuition Paid For Special Education	Total
1 1306 Institutions			
2 Institutionalized Children's Programs			
3 Juveniles Incarcerated in Adult Facilities			
4 Residential Treatment Facilities	25,367.00		25,367.00
5 Other Local Education Agencies	502,706.89	746.60	503,453.49
6 Brick and Mortar Charter Schools	360,555.64		360,555.64
7 Cyber Charter Schools	1,128,231.06		1,128,231.06
8 Career and Technology Centers	1,277,053.24	108,223.02	1,385,276.26
9 Approved Private Schools	18,825.00		18,825.00
10 PA Chartered Schools for the Deaf and Blind			
11 Private Residential Rehabilitative Institutions			
12 Juvenile Detention Centers			
13 Special Program Jointures			
14 Other Tuition Not Included Elsewhere In This Section			
Section 2 Total	\$3,312,738.83	\$108,969.62	\$3,421,708.45

Food Service / Cafeteria Operations Fund (51)

3000 Operation of Non-Instructional Services

Total

100 Personnel Services – Salaries

100 Personnel Services – Salaries

Total Personnel Services – Salaries

200 Personnel Services – Employee Benefits

- 210 Group Insurance – Contracted Provider
- 220 Social Security Contributions
- 230 PSERS Retirement Contributions
- 250 Unemployment Compensation
- 260 Workers’ Compensation
- 270 Group Insurance – Self-Insurance
- 290 Other Current Employee Benefits

Total Personnel Services – Employee Benefits

600 Supplies

610 General Supplies

Total Supplies

Total 3000 Operation of Non-Instructional Services

<u>Food Service(51)</u>	<u>Child Care Operations(52)</u>	<u>Other Enterprise(58)</u>	<u>Internal Service(60)</u>	<u>Total</u>
-------------------------	----------------------------------	-----------------------------	-----------------------------	--------------

TOTAL ACTUAL EXPENDITURES & OTHER FINANCING USES				
---	--	--	--	--