

LEA Name : Dover Area SD
Address : 101 Edgeway Road
Dover , PA 17315

County : York
AUN Number : 112671803
LEA Type : SD

Annual Financial Report Accuracy Certification Statement

For Fiscal Year Ending
6/30/2019

Pennsylvania Department of Education
&
Office of Comptroller Operations

PDE-2056: Intermediate Unit
PDE-2057: School District, AVTS/CTC, Charter School,
and Special Program Jointure

CERTIFICATION: By signing this page I agree that the electronic data submitted is a complete and accurate statement of the financial operations and status of the local education agency for the fiscal year. It has been prepared in accordance with generally accepted accounting principles and established Commonwealth of PA reporting guidelines.



Chief School Administrator Signature

Date 11/19/19



Board Secretary Signature

Date 11/19/2019

Jennifer Benko

Contact Person

(717)292-3671 Ext :80202

Contact Person Telephone Number

jbenko@doversd.org

Contact Person E-mail Address

(717)292-6024

Contact Person Fax Number

Audit Certification
Annual Financial Report:
For Fiscal Year Ending **6/30/2019**
(Pursuant to PA School Code Section 218(b))

LEA Name : Dover Area SD
AUN Number : 112671803
County : York

Audit Certification Due: 12/31/2019

This certification is applicable to the Annual Financial Report data submitted through the Consolidated Financial Reporting System on: 11/20/19
Date

Auditing Firm:
Boyer & Ritter, LLC

CERTIFICATION: By signing this page I agree that the financial statements of the school have been properly audited as noted above pursuant to Article XXIV, and in the auditor's professional opinion, the Annual Financial Report (PDE-2057) submitted on the date referenced is materially consistent with the audited financial statements.

Chief School Administrator


Signature 11/20/19
Date

Board Secretary


Signature 11/20/19
Date

Jennifer Benko

Contact Person

jbenko@doversd.org

Contact Person E-mail Address

(717)292-3671 Ext :80202

Contact Person Telephone Number

(717)292-6024

Contact Person Fax Number

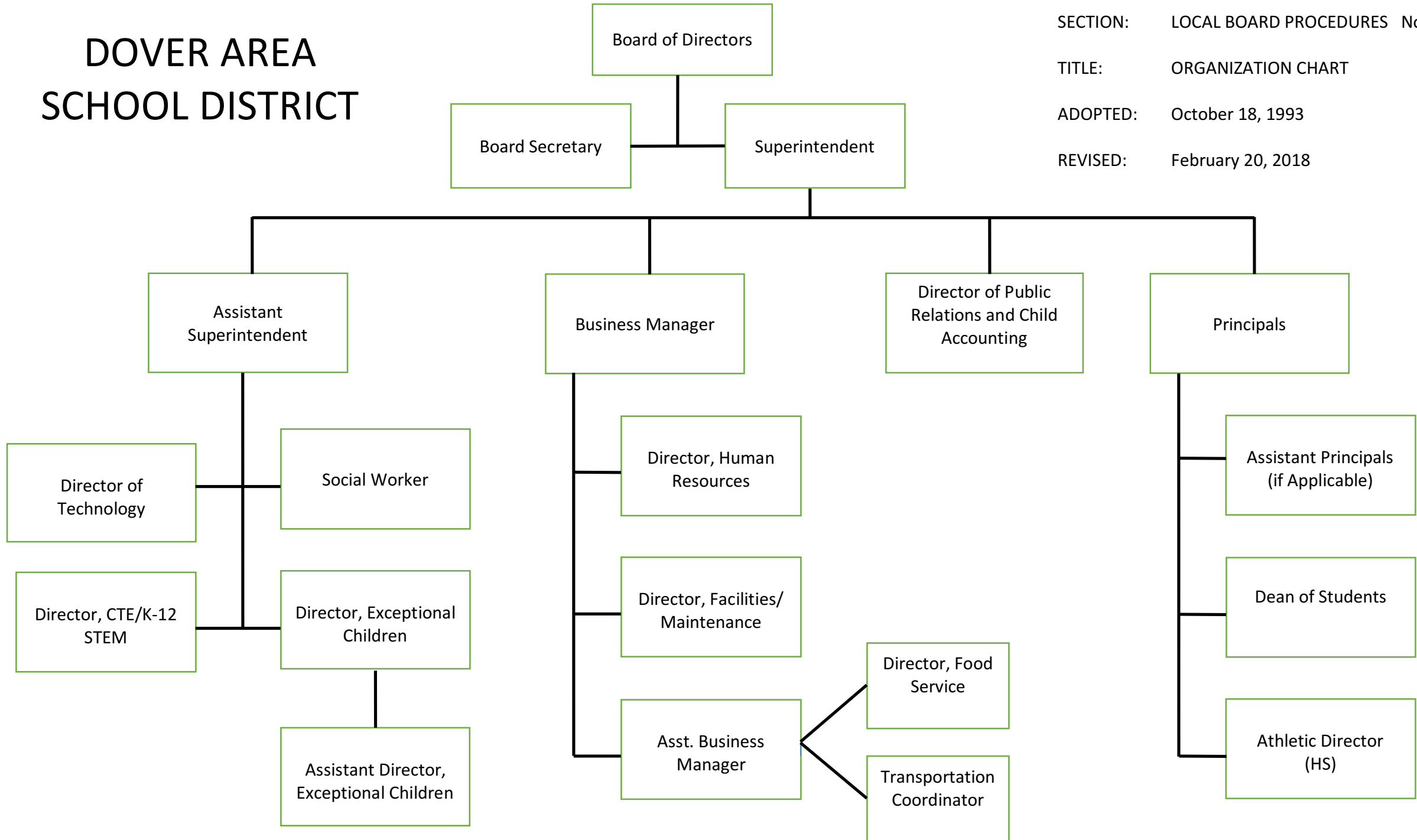
DOVER AREA SCHOOL DISTRICT

SECTION: LOCAL BOARD PROCEDURES No. 008

TITLE: ORGANIZATION CHART

ADOPTED: October 18, 1993

REVISED: February 20, 2018



<u>Val Number</u>	<u>Description</u>	<u>Justification</u>
16015	<p>REP Fund 51: Object 300 is greater than object 500. Purchased services for food service contracted services should be coded to objects 571 and 572. Correct or enter a justification.</p> <p>REP Fund 51 Object 300: \$693.00 REP Fund 51 Object 500: \$85.00</p>	<p>This money was used for professional development for the Food Service staff.</p>
30470	<p>Revenue Detail: AFR amount must equal or exceed PDE FAI System amount.</p> <p>7299, AFR Rev Detail: \$0.00 7299, PDE FAI System: \$108.90</p>	<p>The \$108.90 was booked as a receivable in 17-18 for PRRI. We received the monies in FY 2018-2019. On the confirmation from FAI, this revenue related to FY 2014-2015.</p>
30501	<p>Revenue Detail: AFR amount must equal PDE FAI system amount.</p> <p>7311, AFR Rev Detail: \$1,392,156.34 7311, PDE FAI System: \$1,327,056.31</p>	<p>The variance of \$65,100.03 is due to adjustments in the transportation subsidy for transportation provided by the LIU. The LIU had an independent audit performed which positively affected our District's subsidy for Fiscal year 2017-2018.</p>
41005	<p>Expenditures have been reported in Function 1700 – Higher Education Programs for Secondary Students. Please confirm that these costs were for services provided to your school's secondary students. NOTE: Adult education programs and Community College sponsorship should be coded to Function 1600.</p> <p>Exp detail, Fund 10, Function 1700 total \$24,150.00</p>	<p>These were expenditures paid o Harrisburg Area Community College for secondary students taking college level courses in the area of CTE.</p>
41162	<p>Expenditure Detail, Salaries (Object 100) and Benefits (Object 200 series): Amounts must be entered for both Salaries and Benefits.</p> <p>Please verify following fund and function codes: Fund 10 Function 2130; Fund 10 Function 2330;</p>	<p>The salary charges were coded to the 300 series instead of the 100 series as done in the prior year for services such as collecting.</p>
50160	<p>SOIN: All Governmental Fund General Obligation Bonds must include an amount for Interest Paid during Fiscal Year. Correct data or enter a justification.</p>	<p>No interest was paid during the fiscal year for GOB 2019, as it was issued in March 2019. The first interest payment for this issue was due in fiscal year 2019-2020.</p>
50430	<p>SESS - 2160 Social Work Services: SESS Schedule amounts for Special Education vary from prior year by 40% or more. Correct the data or enter a justification.</p> <p>SESS Schedule 2160: \$25,669.99 Prior Year SESS Schedule 2160: \$0.00</p>	<p>Social Work services were not reported on the SESS Schedule in 2017-2018 due to new programming in the 2018-2019 fiscal year.</p>

50450 SESS - 2350 Legal and Accounting Services: SESS Schedule amounts for Special Education vary from prior year by 40% or more. Correct the data or enter a justification.

SESS Schedule 2350: \$17,470.63
Prior Year SESS Schedule 2350: \$6,115.40

In late 2017-2018, the district procured the services of a specialized attorney to handle all matters relating to special education in addition to our general solicitor. In 2018-2019, we had a full year of service from the attorney.

Amounts Expressed in Whole Dollars

<u>General Fund</u>	<u>Public Purpose Trust</u>	<u>Other Compt Approved</u>	<u>Athletic / Activity</u>	<u>Capital Reserve (690.</u>
<u>(10)</u>	<u>(27)</u>	<u>(28)</u>	<u>(29)</u>	<u>1850)</u>
				<u>(31)</u>

Assets And Deferred Outflows Of Resources

Assets

0100 Cash and Cash Equivalents	6,667,837
0110 Investments	10,170,000
0120 Taxes Receivable	2,061,134
0130 Due From Other Funds	1,899
0141 Due From Other Governments	191,373
0142 State Revenue Receivable	2,680,243
0143 Federal Revenue Receivable	516,166
0145 Other Intergovernmental Revenue Receivable	
0146 Due from Primary Government	
0147 Due from Component Unit	
0150 Other Receivables	66,844
0170 Inventories	
0180 Prepaid Expenses (Expenditures)	5,664,293
0190 Other Current Assets	

Total Assets	\$28,019,789
---------------------	---------------------

0910 Deferred Outflows of Resources

Total Assets And Deferred Outflows Of Resources	\$28,019,789
--	---------------------

Amounts Expressed in Whole Dollars

	<u>Capital Reserve (1431)</u> <u>(32)</u>	<u>Other Capital Projects</u> <u>Fund</u> <u>(39)</u>	<u>Debt Service</u> <u>(40)</u>	<u>Permanent</u> <u>(90)</u>	<u>Total Governmental</u> <u>Funds</u>
Assets And Deferred Outflows Of Resources					
Assets					
0100 Cash and Cash Equivalents	8,834,818	2,301,988			17,804,643
0110 Investments	4,840,000	44,626,000			59,636,000
0120 Taxes Receivable					2,061,134
0130 Due From Other Funds	22,389				24,288
0141 Due From Other Governments					191,373
0142 State Revenue Receivable					2,680,243
0143 Federal Revenue Receivable					516,166
0145 Other Intergovernmental Revenue Receivable					
0146 Due from Primary Government					
0147 Due from Component Unit					
0150 Other Receivables					66,844
0170 Inventories					
0180 Prepaid Expenses (Expenditures)					5,664,293
0190 Other Current Assets					
Total Assets	\$13,697,207	\$46,927,988			\$88,644,984
0910 Deferred Outflows of Resources					
Total Assets And Deferred Outflows Of Resources	\$13,697,207	\$46,927,988			\$88,644,984

Amounts Expressed in Whole Dollars

	<u>General Fund</u> <u>(10)</u>	<u>Public Purpose Trust</u> <u>(27)</u>	<u>Other Compt Approved</u> <u>(28)</u>	<u>Athletic / Activity</u> <u>(29)</u>	<u>Capital Reserve (690.</u> <u>1850)</u> <u>(31)</u>
Liabilities And Deferred Inflows Of Resources And Fund Balances					
Liabilities					
0400 Due to Other Funds					
0411 Due to Other Governments	280,561				
0412 Due to Primary Government					
0413 Due to Component Unit					
0420 Accounts Payable	966,743				
0430 Contracts Payable					
0440 Current Portion of Long-Term Debt					
0450 Short-Term Payables					
0461 Accrued Salaries and Benefits	3,811,174				
0462 Payroll Deductions and Withholding	2,389,192				
0480 Unearned Revenues	128,312				
0490 Other Current Liabilities					
Total Liabilities	\$7,575,982				
0950 Deferred Inflows of Resources	691,007				
Fund Balances					
0810 Nonspendable Fund Balance	5,664,293				
0820 Restricted Fund Balance					
0830 Committed Fund Balance	9,918,515				
0840 Assigned Fund Balance					
0850 Unassigned Fund Balance	4,169,992				
Total Fund Balances	\$19,752,800				
Total Liabilities, Deferred Inflows Of Resources And Fund Balances	\$28,019,789				

Amounts Expressed in Whole Dollars	<u>Capital Reserve (1431)</u> <u>(32)</u>	<u>Other Capital Projects</u> <u>Fund</u> <u>(39)</u>	<u>Debt Service</u> <u>(40)</u>	<u>Permanent</u> <u>(90)</u>	<u>Total Governmental</u> <u>Funds</u>
Liabilities And Deferred Inflows Of Resources And Fund Balances					
Liabilities					
0400 Due to Other Funds		22,389			22,389
0411 Due to Other Governments					280,561
0412 Due to Primary Government					
0413 Due to Component Unit					
0420 Accounts Payable	145,425	171,673			1,283,841
0430 Contracts Payable	15,300	2,096,290			2,111,590
0440 Current Portion of Long-Term Debt					
0450 Short-Term Payables					
0461 Accrued Salaries and Benefits					3,811,174
0462 Payroll Deductions and Withholding					2,389,192
0480 Unearned Revenues					128,312
0490 Other Current Liabilities					
Total Liabilities	\$160,725	\$2,290,352			\$10,027,059
0950 Deferred Inflows of Resources					691,007
Fund Balances					
0810 Nonspendable Fund Balance					5,664,293
0820 Restricted Fund Balance	13,536,482	44,637,636			58,174,118
0830 Committed Fund Balance					9,918,515
0840 Assigned Fund Balance					
0850 Unassigned Fund Balance					4,169,992
Total Fund Balances	\$13,536,482	\$44,637,636			\$77,926,918
Total Liabilities, Deferred Inflows Of Resources And Fund Balances	\$13,697,207	\$46,927,988			\$88,644,984

Amounts Expressed in Whole Dollars	<u>General Fund</u> <u>(10)</u>	<u>Public Purpose Trust</u> <u>(27)</u>	<u>Other Compt Approved</u> <u>(28)</u>	<u>Athletic / Activity</u> <u>(29)</u>	<u>Capital Reserve (690.</u> <u>1850)</u> <u>(31)</u>
Revenues					
6000 Revenue from Local Sources	38,286,948				
7000 Revenue from State Sources	24,659,389				
8000 Revenue from Federal Sources	1,140,061				
Total Revenues	\$64,086,398				
Expenditures					
1000 Instruction	37,731,002				
2000 Support Services	18,540,686				
3000 Operation of Non-Instructional Services	1,032,010				
4000 Facilities Acquisition, Construction and Improvement Services					
5110 Debt Service	6,406,756				
5130 Refund of Prior Year Revenues / Receipts	287,306				
Total Expenditures	\$63,997,760				
Excess (Deficiency) Of Revenues Over Expenditures	\$88,638				
Other Financing Sources (Uses)					
9110 Face Value of Bonds Issued					
9120 Proceeds from Refunding of Bonds					
9130 Bond Premiums					
9200 Proceeds from Extended-Term Financing	1,069,042				
9300 Interfund Transfers - IN					
9400 Sale of or Compensation for Loss of Fixed Assets	167,420				
9710 Transfers from Component Units					
9720 Transfers from Primary Governments					
9910 Other Financing Sources Not Listed in the 9000 Series					
9990 Insurance Recoveries					
5120 Debt Service – Refunded Bonds					
5150 Bond Discounts					
5200 Interfund Transfers – Out	1,013,844				
5300 Transfers Out to Component Units/Primary Governments					
Total Other Financing Sources (Uses)	\$222,618				

Amounts Expressed in Whole Dollars	<u>Capital Reserve (1431)</u> <u>(32)</u>	<u>Other Capital Projects</u> <u>Fund</u> <u>(39)</u>	<u>Debt Service</u> <u>(40)</u>	<u>Permanent</u> <u>(90)</u>	<u>Total Governmental</u> <u>Funds</u>
Revenues					
6000 Revenue from Local Sources	283,284	656,468			39,226,700
7000 Revenue from State Sources					24,659,389
8000 Revenue from Federal Sources					1,140,061
Total Revenues	\$283,284	\$656,468			\$65,026,150
Expenditures					
1000 Instruction					37,731,002
2000 Support Services	59,311	492,376			19,092,373
3000 Operation of Non-Instructional Services					1,032,010
4000 Facilities Acquisition, Construction and Improvement Services	25,831	23,032,762			23,058,593
5110 Debt Service					6,406,756
5130 Refund of Prior Year Revenues / Receipts					287,306
Total Expenditures	\$85,142	\$23,525,138			\$87,608,040
Excess (Deficiency) Of Revenues Over Expenditures	\$198,142	(\$22,868,670)			(\$22,581,890)
Other Financing Sources (Uses)					
9110 Face Value of Bonds Issued		35,085,000			35,085,000
9120 Proceeds from Refunding of Bonds					
9130 Bond Premiums		3,919,595			3,919,595
9200 Proceeds from Extended-Term Financing					1,069,042
9300 Interfund Transfers - IN	1,013,844				1,013,844
9400 Sale of or Compensation for Loss of Fixed Assets					167,420
9710 Transfers from Component Units					
9720 Transfers from Primary Governments					
9910 Other Financing Sources Not Listed in the 9000 Series					
9990 Insurance Recoveries					
5120 Debt Service – Refunded Bonds					
5150 Bond Discounts					
5200 Interfund Transfers – Out					1,013,844
5300 Transfers Out to Component Units/Primary Governments					
Total Other Financing Sources (Uses)	\$1,013,844	\$39,004,595			\$40,241,057

Amounts Expressed in Whole Dollars

<u>General Fund</u>	<u>Public Purpose Trust</u>	<u>Other Compt Approved</u>	<u>Athletic / Activity</u>	<u>Capital Reserve</u>
<u>(10)</u>	<u>(27)</u>	<u>(28)</u>	<u>(29)</u>	<u>(690,185)</u>
				<u>(31)</u>

Special And Extraordinary Items

- 9920 Special Items – Gains
- 9930 Extraordinary Items – Gains
- 5520 Special Items – Losses
- 5530 Extraordinary Items – Losses

Net Change In Fund Balances	\$311,256
------------------------------------	------------------

Fund Balance

0001 Fund Balance - Beginning of Fiscal Year	19,441,541
--	------------

Fund Balance - End Of Year	\$19,752,797
-----------------------------------	---------------------

Amounts Expressed in Whole Dollars	<u>Capital Reserve (1431)</u> <u>(32)</u>	<u>Other Capital Projects</u> <u>Fund</u> <u>(39)</u>	<u>Debt Service</u> <u>(40)</u>	<u>Permanent</u> <u>(90)</u>	<u>Total Governmental</u> <u>Funds</u>
Special And Extraordinary Items					
9920 Special Items – Gains					
9930 Extraordinary Items – Gains					
5520 Special Items – Losses					
5530 Extraordinary Items – Losses					
Net Change In Fund Balances	\$1,211,986	\$16,135,925			\$17,659,167
Fund Balance					
0001 Fund Balance - Beginning of Fiscal Year	12,324,496	28,501,711			60,267,748
Fund Balance - End Of Year	\$13,536,482	\$44,637,636			\$77,926,915

Amounts Expressed in Whole Dollars	<u>Food Service</u> <u>(51)</u>	<u>Child Care</u> <u>Operations</u> <u>(52)</u>	<u>Other Enterprise</u> <u>(58)</u>	<u>TOTAL</u>	<u>Internal Service</u> <u>(60)</u>
Assets And Deferred Outflows Of Resources					
Current Assets					
0100 Cash and Cash Equivalents	682,211			682,211	
0110 Investments					
0130 Due From Other Funds					
0141 Due From Other Governments					
0142 State Revenue Receivable					
0143 Federal Revenue Receivable	5,196			5,196	
0146 Due from Primary Government					
0147 Due from Component Unit					
0150 Other Receivables	33,559			33,559	
0170 Inventories	14,253			14,253	
0180 Prepaid Expenses (Expenditures)	114			114	
0190 Other Current Assets					
Total Current Assets	\$735,333			\$735,333	
Noncurrent Assets					
0211 Land					
0212 Site Improvements (Net)					
0220 Buildings and Building Improvements (Net)					
0230 Machinery, Equipment and Furniture (Net)	97,871			97,871	
0250 Construction in Progress					
0260 Long Term Prepayments					
0290 Other Noncurrent Assets					
Total Noncurrent Assets	\$97,871			\$97,871	
0910 Deferred Outflows of Resources	316,480			316,480	
Total Assets And Deferred Outflows Of Resources	\$1,149,684			\$1,149,684	

Amounts Expressed in Whole Dollars	<u>Food Service</u> <u>(51)</u>	<u>Child Care</u> <u>Operations</u> <u>(52)</u>	<u>Other Enterprise</u> <u>(58)</u>	<u>TOTAL</u>	<u>Internal Service</u> <u>(60)</u>
Liabilities And Deferred Inflows Of Resources And Net Position					
Current Liabilities					
0400 Due to Other Funds	825			825	
0411 Due to Other Governments					
0413 Due to Component Unit					
0420 Accounts Payable	336			336	
0430 Contracts Payable					
0440 Current Portion of Long-Term Debt					
0450 Short-Term Payables					
0461 Accrued Salaries and Benefits	1,680			1,680	
0462 Payroll Deductions and Withholding					
0480 Unearned Revenues	38,400			38,400	
0490 Other Current Liabilities					
Total Current Liabilities	\$41,241			\$41,241	
Noncurrent Liabilities					
0510 Bonds Payable					
0520 Extended-Term Financing Agreements Payable					
0530 Lease-Purchase Obligations					
0540 Accumulated Compensated Absences	9,585			9,585	
0550 Authority Lease Obligations					
0560 Other Post-Employment Benefits (OPEB)	101,400			101,400	
0570 Net Pension Liability	1,757,000			1,757,000	
0599 Other Noncurrent Liabilities					
Total Noncurrent Liabilities	\$1,867,985			\$1,867,985	
Total Liabilities	\$1,909,226			\$1,909,226	
0950 Deferred Inflows of Resources	42,600			42,600	
Net Position					
0791 Net Investment in Capital Assets	97,871			97,871	
0008 Restricted Net Position (0792 – 0798)					
0799 Unrestricted Net Position	(900,013)			(900,013)	
Total Net Position	(\$802,142)			(\$802,142)	
Total Liabilities And Deferred Inflows Of Resources And Net Position	\$1,149,684			\$1,149,684	

Amounts Expressed in Whole Dollars	<u>Food Service</u> <u>(51)</u>	<u>Child Care Operations</u> <u>(52)</u>	<u>Other Enterprise</u> <u>(58)</u>	<u>TOTAL</u>	<u>Internal Service</u> <u>(60)</u>
Operating Revenues					
6600 Food Service Revenue	680,280			680,280	
0071 Charges for Services					
0072 Other Operating Revenue					
Total Operating Revenues	\$680,280			\$680,280	
Operating Expenses					
100 Personnel Services – Salaries	504,799			504,799	
200 Personnel Services – Employee Benefits	347,310			347,310	
300 Purchased Professional and Technical Services	693			693	
400 Purchased Property Services	10,851			10,851	
500 Other Purchased Services	85			85	
600 Supplies	662,730			662,730	
740 Depreciation	12,534			12,534	
810 Dues and Fees					
890 Miscellaneous Expenditures	15,317			15,317	
Total Operating Expenses	\$1,554,319			\$1,554,319	
Operating Income (Loss)	(\$874,039)			(\$874,039)	
Non Operating Revenues (Expenses)					
6500 Earnings on Investments	10,382			10,382	
6920 Contributions and Donations from Private Sources					
6930 Gains or Losses on Sale of Fixed Assets					
6991 Refunds of a Prior Year Expenditure					
7000 Revenue from State Sources	157,619			157,619	
8000 Revenue from Federal Sources	1,001,820			1,001,820	
9990 Insurance Recoveries					
820 Claims and Judgments Against the LEA					
830 Interest					
TOTAL Non Operating Revenues (Expenses)	\$1,169,821			\$1,169,821	
Income (Loss) Before Contributions And Transfers	\$295,782			\$295,782	

Amounts Expressed in Whole Dollars	<u>Food Service</u> <u>(51)</u>	<u>Child Care Operations</u> <u>(52)</u>	<u>Other Enterprise</u> <u>(58)</u>	<u>TOTAL</u>	<u>Internal Service</u> <u>(60)</u>
Contributions, Transfers, and Special and Extraordinary Items					
5200 Interfund Transfers – Out					
5300 Transfers Out to Component Units/Primary Governments					
5520 Special Items – Losses					
5530 Extraordinary Items – Losses					
9300 Interfund Transfers - IN					
9500 Capital Contributions					
9700 Transfers IN From Component Units/Primary Governments					
9920 Special Items – Gains					
9930 Extraordinary Items – Gains					
Change In Net Position	\$295,782			\$295,782	
0002 Net Position - Beginning of Fiscal Year	(1,097,925)			(1,097,925)	
0003 Accounting Changes / Residual Equity Transfers					
Net Position - End Of Year	(\$802,143)			(\$802,143)	

LEA : 112671803 Dover Area SD

Printed 3/25/2020 8:27:53 AM

Amounts Expressed in Whole Dollars	<u>Food Service</u> <u>(51)</u>	<u>Child Care Operations</u> <u>(52)</u>	<u>Other Enterprise</u> <u>(58)</u>	<u>TOTAL</u>	<u>Internal Service(60)</u>
Cash Flows From Operating Activities					
0011 Cash Receipts From Users	667,179			667,179	
0012 Cash Receipts From Assessments Made to Other Funds					
0013 Cash Receipts From Earnings on Investments					
0014 Cash Receipts From Other Operating Revenue					
0015 Cash Payments To Employees For Services	915,955			915,955	
0016 Cash Payments For Insurance Claims					
0017 Cash Payments To Suppliers For Goods and Services	573,413			573,413	
0018 Cash Payments For Other Operating Expenses	15,401			15,401	
Net Cash Provided By (Used For) Operating Activities	(\$837,590)			(\$837,590)	
Cash Flows From Non-Capital Financing Activities					
0021 Receipts From Local Sources - 6000					
0022 Receipts From State Sources - 7000	163,872			163,872	
0023 Receipts From Federal Sources -8000	991,692			991,692	
0024 Notes and Loans Received (Repaid)					
0025 Interest Paid on Notes/Loans - 5100-830					
0026 Operating Transfers In (Out)/Residual Equity Trans					
0027 Operating Transfers In (Out) Primary Government / Comp Unit					
0028 Receipts From Refund of Prior Year Expenditures - 6991					
0029 Special and Extraordinary Gains (losses)					
0030 Receipts from Insurance Recoveries -9990					
Net Cash Prov By (Used for) Non-Capital Financing Activities	\$1,155,564			\$1,155,564	
Cash Flows From Capital and Related Financing Activities					
0031 Payments For Fac Acq, Const, and Imp - 4000					
0032 Gain / (Loss) on Sale of Fixed Assets - 6930					
0033 Proceeds From Extended Term Financing - 9200					
0034 Principal Paid on Financing Agreements					
0035 Interest Paid on Financing Agreements - 5100-830					
0036 (Inc) Dec in Contributed Capital	(26,493)			(26,493)	
Net Cash Prov By (Used for) Capital and Related Financing Activities	(\$26,493)			(\$26,493)	
Cash Flows From Investing Activities					
0041 Earnings on Investments - 6500	10,382			10,382	
0042 Purchase of Inv Securities / Deposits to Inv Pools					
0043 Receipts From Investment Pool Withdrawals					
0044 Proceeds from Sale and Maturity of Inv Securities					

LEA : 112671803 Dover Area SD

Printed 3/25/2020 8:27:53 AM

0045 Loans Received (Paid)

Net Cash Prov By (Used for) Investing Activities	\$10,382	\$10,382
---	-----------------	-----------------

	<u>Food Service</u> <u>(51)</u>	<u>Child Care Operations</u> <u>(52)</u>	<u>Other Enterprise</u> <u>(58)</u>	<u>TOTAL</u>	<u>Internal Service</u> <u>(60)</u>
Net Increase (Decrease) in Cash Flows	301,863			301,863	
0004 Cash and Cash Equivalents Beginning of Year	380,348			380,348	
Cash and Cash Equivalents at Year End	\$682,211			\$682,211	
<hr/>					
Reconciliation of Operating Income (Loss) To Net Cash Provided by (Used For) Operating Activities					
0005 Operating Income (Loss) per REP	(874,039)			(874,039)	
Adjustments					
0051 Depreciation and Net Amortization	12,534			12,534	
0052 Provision for Uncollectible Accounts					
0053 Other Adjustments	105,614			105,614	
Effect of Changes in Assets, Liabilities, Deferred Outflows and Deferred Inflows					
0054 (Inc) Dec In Accounts Receivable (0120-0150)	(16,204)			(16,204)	
0055 Advances to Other Funds (0160)					
0056 (Inc) Dec in Inventories (0170)	(4,946)			(4,946)	
0057 (Inc) Dec in Prepaid Expenses (0180)	(114)			(114)	
0058 (Inc) Dec in Other Current or Noncurrent Assets					
0064 Deferred Outflows (0910)	16,923			16,923	
0059 Inc (Dec) in Accounts Payable (0400-0450)	307			307	
0060 Inc (Dec) in Accrued Salaries/Benefits (0461)	(6,211)			(6,211)	
0065 Inc (Dec) in Net Pension Liabilities (0570)	17,000			17,000	
0066 Inc (Dec) in Other Postemp Benefit Oblig (0560)	(4,865)			(4,865)	
0061 Inc (Dec) in Payroll Deductions/Withholding (0462)					
0062 Inc (Dec) in Unearned Revenue (0480)	3,103			3,103	
0063 Inc (Dec) in Other Current or Noncurrent Liabilities	(99,293)			(99,293)	
0067 Deferred Inflows (0950)	12,600			12,600	
Total Adjustments	\$36,448			\$36,448	
Cash Provided By (Used for) Total	(\$837,591)			(\$837,591)	

COMBINED STATEMENT OF CASH FLOWS
SCHEDULE OF NONCASH INVESTING, CAPITAL, AND FINANCING ACTIVITIES

Explanation of Transaction and Balance Sheet Effect	Amount
Total	

LEA : 112671803 Dover Area SD

Printed 3/25/2020 8:27:55 AM

Amounts Expressed in Whole Dollars

Private Purpose Trust
(71)

Investment Trust
(72)

Pension Trust
(73)

Activity
(81)

Assets And Deferred Outflows Of Resources

Assets

0100 Cash and Cash Equivalents				97,878
0110 Investments				
0130 Due From Other Funds				
0147 Due from Component Unit				
0150 Other Receivables				150
0170 Inventories				
0180 Prepaid Expenses (Expenditures)				
0190 Other Current Assets				
0220 Buildings and Building Improvements (Net)				
0230 Machinery, Equipment and Furniture (Net)				

Total Assets				\$98,028
---------------------	--	--	--	-----------------

0910 Deferred Outflows of Resources

Total Assets And Deferred Outflows Of Resources				\$98,028
--	--	--	--	-----------------

LEA : 112671803 Dover Area SD

Printed 3/25/2020 8:27:55 AM

Amounts Expressed in Whole Dollars

<u>Other Agency</u>	<u>Discrete Component Units</u>	<u>Discrete Component Units</u>	<u>Total Fiduciary Funds</u>
(89)	(98)	(99)	

Assets And Deferred Outflows Of Resources

Assets

0100	Cash and Cash Equivalents			97,878
0110	Investments			
0130	Due From Other Funds			
0147	Due from Component Unit			
0150	Other Receivables			150
0170	Inventories			
0180	Prepaid Expenses (Expenditures)			
0190	Other Current Assets			
0220	Buildings and Building Improvements (Net)			
0230	Machinery, Equipment and Furniture (Net)			

Total Assets				\$98,028
---------------------	--	--	--	-----------------

0910 Deferred Outflows of Resources

Total Assets And Deferred Outflows Of Resources				\$98,028
--	--	--	--	-----------------

LEA : 112671803 Dover Area SD

Printed 3/25/2020 8:27:55 AM

Amounts Expressed in Whole Dollars

Private Purpose Trust
(71)

Investment Trust
(72)

Pension Trust
(73)

Activity
(81)

Liabilities, Deferred Inflows Of Resources And Net Position

Liabilities

0400 Due to Other Funds				1,074
0411 Due to Other Governments				
0412 Due to Primary Government				
0413 Due to Component Unit				
0420 Accounts Payable				
0430 Contracts Payable				
0450 Short-Term Payables				
0461 Accrued Salaries and Benefits				
0462 Payroll Deductions and Withholding				
0480 Unearned Revenues				
0490 Other Current Liabilities				96,954

Total Liabilities **\$98,028**

0950 Deferred Inflows of Resources

Net Position

0791 Net Investment in Capital Assets				
0009 Restricted Net Position (0792 – 0798)				
0799 Unrestricted Net Position				

Total Net Position **\$98,028**

Total Liabilities, Deferred Inflows Of Resources And Net Position **\$98,028**

LEA : 112671803 Dover Area SD

Printed 3/25/2020 8:27:55 AM

Amounts Expressed in Whole Dollars	<u>Other Agency</u> <u>(89)</u>	<u>Discrete Component Units</u> <u>(98)</u>	<u>Discrete Component Units</u> <u>(99)</u>	<u>Total Fiduciary Funds</u>
Liabilities, Deferred Inflows Of Resources And Net Position				
Liabilities				
0400 Due to Other Funds				1,074
0411 Due to Other Governments				
0412 Due to Primary Government				
0413 Due to Component Unit				
0420 Accounts Payable				
0430 Contracts Payable				
0450 Short-Term Payables				
0461 Accrued Salaries and Benefits				
0462 Payroll Deductions and Withholding				
0480 Unearned Revenues				
0490 Other Current Liabilities				96,954
Total Liabilities				\$98,028
Net Position				
0791 Net Investment in Capital Assets				
0009 Restricted Net Position (0792 – 0798)				
0799 Unrestricted Net Position				
Total Net Position				
Total Liabilities, Deferred Inflows Of Resources And Net Position				\$98,028

	<u>Revenue Reported In Current Year</u>	<u>Current Year Tax Accrual</u>	<u>Prior Year Tax Accrual</u>	<u>Taxes Collected In Current Year</u>
<u>Revenue from Local Sources</u>				
6111 Current Real Estate Taxes	28,363,608.58			28,363,608.58
6112 Interim Real Estate Taxes	227,742.30			227,742.30
6113 Public Utility Realty Taxes	35,023.68			35,023.68
6114 Payments in Lieu of Current Taxes - State / Local	231.84			231.84
6151 Current Act 511 Earned Income Taxes	5,749,030.99			5,749,030.99
6153 Current Act 511 Real Estate Transfer Taxes	554,470.05			554,470.05
6411 Delinquent Real Estate Taxes	915,591.42			915,591.42
6420 Delinquent Per Capita Taxes, Section 679	1,396.11			1,396.11
6451 Delinquent Act 511 Earned Income Taxes	193,901.35			193,901.35
6500 Earnings on Investments	773,427.13			
6700 Revenues from LEA Activities	168,950.03			
6831 Federal Revenue Received from Other Pennsylvania Public LEAs	303,977.23			
6832 Federal IDEA Revenue Received as Pass Through	738,974.33			
6910 Rentals	15,453.23			
6920 Contributions and Donations from Private Sources	3.46			
6941 Regular Day School Tuition	17,851.86			
6942 Summer School Tuition	1,750.00			
6944 Receipts from Other LEAs in Pennsylvania - Education	90,728.66			
6961 Transportation Services Provided Other Pennsylvania LEAs	81,047.83			
6991 Refunds of a Prior Year Expenditure	37,957.13			
6999 Other Revenues Not Specified Above	15,830.39			
TOTAL Revenue from Local Sources	\$38,286,947.60			\$36,040,996.32

**Revenue Reported
In Current Year**

Revenue from State Sources

7110 Basic Education Funding	11,606,492.91		
7160 Tuition for Orphans Subsidy	19,967.26		
7220 Vocational Education	138,087.73		
7271 Special Education funds for School-Aged Pupils	2,113,294.77		
7311 Pupil Transportation Subsidy	1,392,156.34		
7312 Nonpublic and Charter School Pupil Transportation Subsidy	56,210.00		
7320 Rental and Sinking Fund Payments / Building Reimbursement Subsidy	1,274,855.28		
7330 Health Services (Medical, Dental, Nurse, Act 25)	65,992.23		
7340 State Property Tax Reduction Allocation	1,275,500.96		
7361 School Safety and Security Grants	25,000.00		
7505 Ready to Learn Block Grant	560,822.00		
7810 State Share of Social Security and Medicare Taxes	1,106,788.38		
7820 State Share of Retirement Contributions	5,024,220.75		
TOTAL Revenue from State Sources	\$24,659,388.61		

**Revenue Reported
In Current Year**

Revenue from Federal Sources

8514 NCLB, Title I - Improving the Academic Achievement of the Disadvantaged	572,349.00		
8515 NCLB, Title II - Preparing, Training and Recruiting High Quality Teachers and Principals	103,859.00		
8517 NCLB, Title IV - 21St Century Schools	42,387.00		
8810 School-Based Access Medicaid Reimbursement Program (SBAP) Reimbursements (Access)	407,236.67		
8820 Medical Assistance Reimbursement for Administrative Claiming (Quarterly) Program	14,229.58		
TOTAL Revenue from Federal Sources	\$1,140,061.25		

	Revenue Reported In Current Year			
Other Financing Sources				
9290 Other Extended-Term Financing Proceeds	1,069,042.00			
9400 Sale of or Compensation for Loss of Fixed Assets	167,420.00			
TOTAL Other Financing Sources	\$1,236,462.00			
TOTAL FROM ALL SOURCES	\$65,322,859.46			\$36,040,996.32

Revenue from Local Sources	38,286,947.60
Revenue from State Sources	24,659,388.61
Revenue from Federal Sources	1,140,061.25
Other Financing Sources	1,236,462.00
TOTAL FROM ALL SOURCES	\$65,322,859.46

General Fund (10)

	<u>Total</u>
1000 Instruction	
100 Personnel Services – Salaries	
100 Personnel Services – Salaries	19,158,119.68
Total Personnel Services – Salaries	\$19,158,119.68
200 Personnel Services – Employee Benefits	
210 Group Insurance – Contracted Provider	11,200.06
220 Social Security Contributions	1,419,367.33
230 PSERS Retirement Contributions	6,366,083.09
250 Unemployment Compensation	12,196.71
260 Workers’ Compensation	127,364.12
270 Group Insurance – Self-Insurance	2,889,009.48
291 Other Retirement Plans	6,108.63
Total Personnel Services – Employee Benefits	\$10,831,329.42
300 Purchased Professional and Technical Services	
322 Professional Educational Services – Ius	3,564,343.35
323 Professional Educational Services – Other Educational Agencies	68,631.00
330 Other Professional Services	70,079.44
Total Purchased Professional and Technical Services	\$3,703,053.79
400 Purchased Property Services	
430 Repairs and Maintenance Services	5,174.61
Total Purchased Property Services	\$5,174.61
500 Other Purchased Services	
550 Printing and Binding	279.00
561 Tuition To Other School Districts Within the State	51,595.99
562 Tuition To Pennsylvania Charter Schools	1,768,068.76
564 Tuition To Career and Technology Centers	1,119,984.88
566 Tuition To Institutions of Higher Education and Technical Institutes	24,150.00
568 Tuition To Private Residential Rehabilitative Institutions (PRRI) [In-State] and Detention Centers	417,502.08
569 Tuition – Other	75,600.00
580 Travel	5,906.36
Total Other Purchased Services	\$3,463,087.07
600 Supplies	
610 General Supplies	251,108.57
630 Food	6,979.77
640 Books and Periodicals	227,138.57
650 Supplies & Fees – Technology Related	5,438.36
Total Supplies	\$490,665.27
700 Property	
752 Capital Equipment – Original and Additional	45,976.62
762 Capitalized Equipment - Replacement	4,860.00
Total Property	\$50,836.62
800 Other Objects	
810 Dues and Fees	16,068.75

LEA : 112671803 Dover Area SD

Printed 3/25/2020 8:28:03 AM

General Fund (10)

1000 Instruction	<u>Total</u>
800 Other Objects	
890 Miscellaneous Expenditures	12,667.00
Total Other Objects	\$28,735.75
Total 1000 Instruction	\$37,731,002.21

General Fund (10)

1100 Regular Programs – Elementary / Secondary

	<u>Elementary</u>	<u>Secondary</u>	<u>Federal</u>	<u>Total</u>
100 Personnel Services – Salaries				
100 Personnel Services – Salaries	7,830,455.99	5,957,271.11	975,942.35	14,763,669.45
Total Personnel Services – Salaries	\$7,830,455.99	\$5,957,271.11	\$975,942.35	\$14,763,669.45
200 Personnel Services – Employee Benefits				
210 Group Insurance – Contracted Provider	4,203.60	3,274.68	251.27	7,729.55
220 Social Security Contributions	620,828.31	442,915.10	30,567.03	1,094,310.44
230 PSERS Retirement Contributions	2,838,095.74	1,987,506.16	69,331.33	4,894,933.23
250 Unemployment Compensation	7,749.06	143.67		7,892.73
260 Workers' Compensation	55,949.21	39,876.78	2,642.71	98,468.70
270 Group Insurance – Self-Insurance	1,139,042.50	589,042.76	76,175.45	1,804,260.71
291 Other Retirement Plans	3,420.83	2,687.80		6,108.63
Total Personnel Services – Employee Benefits	\$4,669,289.25	\$3,065,446.95	\$178,967.79	\$7,913,703.99
300 Purchased Professional and Technical Services				
322 Professional Educational Services – lus	280,827.73			280,827.73
330 Other Professional Services	270.00	632.14		902.14
Total Purchased Professional and Technical Services	\$281,097.73	\$632.14		\$281,729.87
400 Purchased Property Services				
430 Repairs and Maintenance Services	335.05	2,739.98		3,075.03
Total Purchased Property Services	\$335.05	\$2,739.98		\$3,075.03
500 Other Purchased Services				
550 Printing and Binding		279.00		279.00
561 Tuition To Other School Districts Within the State	6,300.40	30,551.37		36,851.77
562 Tuition To Pennsylvania Charter Schools	412,821.23	700,813.15		1,113,634.38
568 Tuition To Private Residential Rehabilitative Institutions (PRRI) [In-State] and Detention Centers	15,150.00			15,150.00
569 Tuition – Other		75,600.00		75,600.00
580 Travel	676.65	837.10		1,513.75
Total Other Purchased Services	\$434,948.28	\$808,080.62		\$1,243,028.90
600 Supplies				
610 General Supplies	87,967.98	84,905.24	500.00	173,373.22
630 Food		3,219.30		3,219.30
640 Books and Periodicals	102,772.50	102,169.42		204,941.92
650 Supplies & Fees – Technology Related	2,771.64	2,666.72		5,438.36
Total Supplies	\$193,512.12	\$192,960.68	\$500.00	\$386,972.80
700 Property				
762 Capitalized Equipment - Replacement		4,860.00		4,860.00
Total Property		\$4,860.00		\$4,860.00
800 Other Objects				
810 Dues and Fees		841.00		841.00
890 Miscellaneous Expenditures		3,968.00		3,968.00
Total Other Objects		\$4,809.00		\$4,809.00
Total 1100 Regular Programs – Elementary / Secondary	\$13,409,638.42	\$10,036,800.48	\$1,155,410.14	\$24,601,849.04

General Fund (10)

1110 Regular Programs

	<u>Elementary</u>	<u>Secondary</u>	<u>Federal</u>	<u>Total</u>
100 Personnel Services – Salaries				
100 Personnel Services – Salaries	7,830,455.99	5,957,271.11	975,942.35	14,763,669.45
Total Personnel Services – Salaries	\$7,830,455.99	\$5,957,271.11	\$975,942.35	\$14,763,669.45
200 Personnel Services – Employee Benefits				
210 Group Insurance – Contracted Provider	4,203.60	3,274.68	251.27	7,729.55
220 Social Security Contributions	620,828.31	442,915.10	30,567.03	1,094,310.44
230 PSERS Retirement Contributions	2,838,095.74	1,987,506.16	69,331.33	4,894,933.23
250 Unemployment Compensation	7,749.06	143.67		7,892.73
260 Workers' Compensation	55,949.21	39,876.78	2,642.71	98,468.70
270 Group Insurance – Self-Insurance	1,139,042.50	589,042.76	76,175.45	1,804,260.71
291 Other Retirement Plans	3,420.83	2,687.80		6,108.63
Total Personnel Services – Employee Benefits	\$4,669,289.25	\$3,065,446.95	\$178,967.79	\$7,913,703.99
300 Purchased Professional and Technical Services				
322 Professional Educational Services – Ius	280,827.73			280,827.73
330 Other Professional Services	270.00	632.14		902.14
Total Purchased Professional and Technical Services	\$281,097.73	\$632.14		\$281,729.87
400 Purchased Property Services				
430 Repairs and Maintenance Services	335.05	2,739.98		3,075.03
Total Purchased Property Services	\$335.05	\$2,739.98		\$3,075.03
500 Other Purchased Services				
550 Printing and Binding		279.00		279.00
561 Tuition To Other School Districts Within the State	6,300.40	30,551.37		36,851.77
562 Tuition To Pennsylvania Charter Schools	412,821.23	700,813.15		1,113,634.38
568 Tuition To Private Residential Rehabilitative Institutions (PRRI) [In-State] and Detention Centers	15,150.00			15,150.00
569 Tuition – Other		75,600.00		75,600.00
580 Travel	676.65	837.10		1,513.75
Total Other Purchased Services	\$434,948.28	\$808,080.62		\$1,243,028.90
600 Supplies				
610 General Supplies	87,967.98	84,905.24	500.00	173,373.22
630 Food		3,219.30		3,219.30
640 Books and Periodicals	102,772.50	102,169.42		204,941.92
650 Supplies & Fees – Technology Related	2,771.64	2,666.72		5,438.36
Total Supplies	\$193,512.12	\$192,960.68	\$500.00	\$386,972.80
700 Property				
762 Capitalized Equipment - Replacement		4,860.00		4,860.00
Total Property		\$4,860.00		\$4,860.00
800 Other Objects				
810 Dues and Fees		841.00		841.00
890 Miscellaneous Expenditures		3,968.00		3,968.00
Total Other Objects		\$4,809.00		\$4,809.00
Total 1110 Regular Programs	\$13,409,638.42	\$10,036,800.48	\$1,155,410.14	\$24,601,849.04

General Fund (10)

1200 Special Programs – Elementary / Secondary

	<u>Elementary</u>	<u>Secondary</u>	<u>Federal</u>	<u>Total</u>
100 Personnel Services – Salaries				
100 Personnel Services – Salaries	1,783,167.91	1,272,787.70		3,055,955.61
Total Personnel Services – Salaries	\$1,783,167.91	\$1,272,787.70		\$3,055,955.61
200 Personnel Services – Employee Benefits				
210 Group Insurance – Contracted Provider	1,137.39	1,039.83		2,177.22
220 Social Security Contributions	132,248.81	93,280.19		225,529.00
230 PSERS Retirement Contributions	595,809.34	428,243.03		1,024,052.37
250 Unemployment Compensation	4,246.71			4,246.71
260 Workers' Compensation	12,260.99	8,108.01		20,369.00
270 Group Insurance – Self-Insurance	457,187.56	378,512.34		835,699.90
Total Personnel Services – Employee Benefits	\$1,202,890.80	\$909,183.40		\$2,112,074.20
300 Purchased Professional and Technical Services				
322 Professional Educational Services – Ius	1,410,356.54	1,259,636.88	613,522.20	3,283,515.62
323 Professional Educational Services – Other Educational Agencies	38,433.36	30,197.64		68,631.00
330 Other Professional Services	4,178.68	56,699.00		60,877.68
Total Purchased Professional and Technical Services	\$1,452,968.58	\$1,346,533.52	\$613,522.20	\$3,413,024.30
500 Other Purchased Services				
561 Tuition To Other School Districts Within the State		12,260.07		12,260.07
562 Tuition To Pennsylvania Charter Schools	200,865.30	453,569.08		654,434.38
564 Tuition To Career and Technology Centers		62,678.03		62,678.03
568 Tuition To Private Residential Rehabilitative Institutions (PRRI) [In-State] and Detention Centers		11,694.08		11,694.08
580 Travel	85.92	205.00		290.92
Total Other Purchased Services	\$200,951.22	\$540,406.26		\$741,357.48
600 Supplies				
610 General Supplies	4,309.24	3,398.11		7,707.35
630 Food	213.40	969.10		1,182.50
640 Books and Periodicals	8,259.65	2,690.97		10,950.62
Total Supplies	\$12,782.29	\$7,058.18		\$19,840.47
Total 1200 Special Programs – Elementary / Secondary	\$4,652,760.80	\$4,075,969.06	\$613,522.20	\$9,342,252.06

General Fund (10)

1210 Life Skills Support

	<u>Elementary</u>	<u>Secondary</u>	<u>Federal</u>	<u>Total</u>
100 Personnel Services – Salaries				
100 Personnel Services – Salaries	274,823.55	214,340.96		489,164.51
Total Personnel Services – Salaries	\$274,823.55	\$214,340.96		\$489,164.51
200 Personnel Services – Employee Benefits				
210 Group Insurance – Contracted Provider	174.87	172.17		347.04
220 Social Security Contributions	20,219.88	15,981.40		36,201.28
230 PSERS Retirement Contributions	91,873.50	71,635.96		163,509.46
260 Workers' Compensation	1,750.81	1,365.43		3,116.24
270 Group Insurance – Self-Insurance	84,887.03	32,744.10		117,631.13
Total Personnel Services – Employee Benefits	\$198,906.09	\$121,899.06		\$320,805.15
300 Purchased Professional and Technical Services				
322 Professional Educational Services – lus	58,921.27	201,510.02		260,431.29
330 Other Professional Services		434.00		434.00
Total Purchased Professional and Technical Services	\$58,921.27	\$201,944.02		\$260,865.29
500 Other Purchased Services				
580 Travel		205.00		205.00
Total Other Purchased Services		\$205.00		\$205.00
600 Supplies				
610 General Supplies	1,413.06	588.41		2,001.47
630 Food	213.40	969.10		1,182.50
640 Books and Periodicals	3,322.51	2,069.61		5,392.12
Total Supplies	\$4,948.97	\$3,627.12		\$8,576.09
Total 1210 Life Skills Support	\$537,599.88	\$542,016.16		\$1,079,616.04

General Fund (10)

1220 Sensory Support

300 Purchased Professional and Technical Services

322 Professional Educational Services – lus

Total Purchased Professional and Technical Services

600 Supplies

610 General Supplies

Total Supplies

Total 1220 Sensory Support

	<u>Elementary</u>	<u>Secondary</u>	<u>Federal</u>	<u>Total</u>
	503,726.43	106,363.70		610,090.13
	\$503,726.43	\$106,363.70		\$610,090.13
	40.00	2,420.99		2,460.99
	\$40.00	\$2,420.99		\$2,460.99
	\$503,766.43	\$108,784.69		\$612,551.12

General Fund (10)

1230 Emotional Support

	<u>Elementary</u>	<u>Secondary</u>	<u>Federal</u>	<u>Total</u>
100 Personnel Services – Salaries				
100 Personnel Services – Salaries	425,484.71			425,484.71
Total Personnel Services – Salaries	\$425,484.71			\$425,484.71
200 Personnel Services – Employee Benefits				
210 Group Insurance – Contracted Provider	168.35			168.35
220 Social Security Contributions	32,918.22			32,918.22
230 PSERS Retirement Contributions	146,618.84			146,618.84
260 Workers' Compensation	2,800.16			2,800.16
270 Group Insurance – Self-Insurance	68,915.10			68,915.10
Total Personnel Services – Employee Benefits	\$251,420.67			\$251,420.67
300 Purchased Professional and Technical Services				
322 Professional Educational Services – lus	610,929.80	656,097.11	483,050.90	1,750,077.81
330 Other Professional Services	4,178.68			4,178.68
Total Purchased Professional and Technical Services	\$615,108.48	\$656,097.11	\$483,050.90	\$1,754,256.49
500 Other Purchased Services				
561 Tuition To Other School Districts Within the State		12,260.07		12,260.07
568 Tuition To Private Residential Rehabilitative Institutions (PRRI) [In-State] and Detention Centers		1,308.06		1,308.06
Total Other Purchased Services		\$13,568.13		\$13,568.13
600 Supplies				
610 General Supplies	1,100.00			1,100.00
640 Books and Periodicals	1,027.09			1,027.09
Total Supplies	\$2,127.09			\$2,127.09
Total 1230 Emotional Support	\$1,294,140.95	\$669,665.24	\$483,050.90	\$2,446,857.09

General Fund (10)

1240 Academic Support

	<u>Elementary</u>	<u>Secondary</u>	<u>Federal</u>	<u>Total</u>
100 Personnel Services – Salaries				
100 Personnel Services – Salaries	1,082,859.65	1,058,446.74		2,141,306.39
Total Personnel Services – Salaries	\$1,082,859.65	\$1,058,446.74		\$2,141,306.39
200 Personnel Services – Employee Benefits				
210 Group Insurance – Contracted Provider	794.17	867.66		1,661.83
220 Social Security Contributions	79,110.71	77,298.79		156,409.50
230 PSERS Retirement Contributions	357,317.00	356,607.07		713,924.07
250 Unemployment Compensation	4,246.71			4,246.71
260 Workers' Compensation	7,710.02	6,742.58		14,452.60
270 Group Insurance – Self-Insurance	303,385.43	345,768.24		649,153.67
Total Personnel Services – Employee Benefits	\$752,564.04	\$787,284.34		\$1,539,848.38
300 Purchased Professional and Technical Services				
322 Professional Educational Services – Ius	10,957.09			10,957.09
330 Other Professional Services		915.00		915.00
Total Purchased Professional and Technical Services	\$10,957.09	\$915.00		\$11,872.09
500 Other Purchased Services				
564 Tuition To Career and Technology Centers		62,678.03		62,678.03
568 Tuition To Private Residential Rehabilitative Institutions (PRRI) [In-State] and Detention Centers		10,306.02		10,306.02
580 Travel	85.92			85.92
Total Other Purchased Services	\$85.92	\$72,984.05		\$73,069.97
600 Supplies				
610 General Supplies	1,756.18	388.71		2,144.89
640 Books and Periodicals	3,910.05	621.36		4,531.41
Total Supplies	\$5,666.23	\$1,010.07		\$6,676.30
Total 1240 Academic Support	\$1,852,132.93	\$1,920,640.20		\$3,772,773.13

General Fund (10)

	<u>Elementary</u>	<u>Secondary</u>	<u>Federal</u>	<u>Total</u>
1241 Learning Support – Public				
100 Personnel Services – Salaries				
100 Personnel Services – Salaries	983,581.25	926,966.18		1,910,547.43
Total Personnel Services – Salaries	\$983,581.25	\$926,966.18		\$1,910,547.43
200 Personnel Services – Employee Benefits				
210 Group Insurance – Contracted Provider	727.48	793.95		1,521.43
220 Social Security Contributions	71,648.97	67,608.09		139,257.06
230 PSERS Retirement Contributions	324,128.25	312,653.08		636,781.33
250 Unemployment Compensation	4,246.71			4,246.71
260 Workers' Compensation	7,077.44	5,905.12		12,982.56
270 Group Insurance – Self-Insurance	289,980.65	314,115.33		604,095.98
Total Personnel Services – Employee Benefits	\$697,809.50	\$701,075.57		\$1,398,885.07
300 Purchased Professional and Technical Services				
322 Professional Educational Services – lus	10,957.09			10,957.09
330 Other Professional Services		915.00		915.00
Total Purchased Professional and Technical Services	\$10,957.09	\$915.00		\$11,872.09
500 Other Purchased Services				
564 Tuition To Career and Technology Centers		62,678.03		62,678.03
Total Other Purchased Services		\$62,678.03		\$62,678.03
600 Supplies				
610 General Supplies	1,580.44	345.36		1,925.80
640 Books and Periodicals	3,570.58	572.30		4,142.88
Total Supplies	\$5,151.02	\$917.66		\$6,068.68
Total 1241 Learning Support – Public	\$1,697,498.86	\$1,692,552.44		\$3,390,051.30

General Fund (10)

1242 Learning Support – PRRI

Elementary

Secondary

Federal

Total

500 Other Purchased Services

568 Tuition To Private Residential Rehabilitative Institutions (PRRI) [In-State] and Detention Centers

10,306.02

10,306.02

Total Other Purchased Services

\$10,306.02

\$10,306.02

Total 1242 Learning Support – PRRI

\$10,306.02

\$10,306.02

General Fund (10)

	<u>Elementary</u>	<u>Secondary</u>	<u>Federal</u>	<u>Total</u>
1243 Gifted Support				
100 Personnel Services – Salaries				
100 Personnel Services – Salaries	99,278.40	131,480.56		230,758.96
Total Personnel Services – Salaries	\$99,278.40	\$131,480.56		\$230,758.96
200 Personnel Services – Employee Benefits				
210 Group Insurance – Contracted Provider	66.69	73.71		140.40
220 Social Security Contributions	7,461.74	9,690.70		17,152.44
230 PSERS Retirement Contributions	33,188.75	43,953.99		77,142.74
260 Workers' Compensation	632.58	837.46		1,470.04
270 Group Insurance – Self-Insurance	13,404.78	31,652.91		45,057.69
Total Personnel Services – Employee Benefits	\$54,754.54	\$86,208.77		\$140,963.31
500 Other Purchased Services				
580 Travel	85.92			85.92
Total Other Purchased Services	\$85.92			\$85.92
600 Supplies				
610 General Supplies	175.74	43.35		219.09
640 Books and Periodicals	339.47	49.06		388.53
Total Supplies	\$515.21	\$92.41		\$607.62
Total 1243 Gifted Support	\$154,634.07	\$217,781.74		\$372,415.81

General Fund (10)

1270 Multi-Handicapped Support

300 Purchased Professional and Technical Services

	<u>Elementary</u>	<u>Secondary</u>	<u>Federal</u>	<u>Total</u>
322 Professional Educational Services – lus	176,404.95	262,666.67	121,351.30	560,422.92
330 Other Professional Services		55,350.00		55,350.00
Total Purchased Professional and Technical Services	\$176,404.95	\$318,016.67	\$121,351.30	\$615,772.92
Total 1270 Multi-Handicapped Support	\$176,404.95	\$318,016.67	\$121,351.30	\$615,772.92

General Fund (10)

1280 Early Intervention Support

300 Purchased Professional and Technical Services

322 Professional Educational Services – lus

Total Purchased Professional and Technical Services

Total 1280 Early Intervention Support

	<u>Elementary</u>	<u>Secondary</u>	<u>Federal</u>	<u>Total</u>
322 Professional Educational Services – lus	23,263.00		9,120.00	32,383.00
Total Purchased Professional and Technical Services	\$23,263.00		\$9,120.00	\$32,383.00
Total 1280 Early Intervention Support	\$23,263.00		\$9,120.00	\$32,383.00

General Fund (10)

	<u>Elementary</u>	<u>Secondary</u>	<u>Federal</u>	<u>Total</u>
1290 Special Programs - Other Support				
300 <u>Purchased Professional and Technical Services</u>				
322 Professional Educational Services – Ius	26,154.00	32,999.38		59,153.38
323 Professional Educational Services – Other Educational Agencies	38,433.36	30,197.64		68,631.00
Total Purchased Professional and Technical Services	\$64,587.36	\$63,197.02		\$127,784.38
500 <u>Other Purchased Services</u>				
562 Tuition To Pennsylvania Charter Schools	200,865.30	453,569.08		654,434.38
568 Tuition To Private Residential Rehabilitative Institutions (PRRI) [In-State] and Detention Centers		80.00		80.00
Total Other Purchased Services	\$200,865.30	\$453,649.08		\$654,514.38
Total 1290 Special Programs - Other Support	\$265,452.66	\$516,846.10		\$782,298.76

General Fund (10)

1300 Vocational Education

	<u>Elementary</u>	<u>Secondary</u>	<u>Federal</u>	<u>Total</u>
100 Personnel Services – Salaries				
100 Personnel Services – Salaries		1,157,149.32		1,157,149.32
Total Personnel Services – Salaries		\$1,157,149.32		\$1,157,149.32
200 Personnel Services – Employee Benefits				
210 Group Insurance – Contracted Provider		1,183.52		1,183.52
220 Social Security Contributions		86,045.14		86,045.14
230 PSERS Retirement Contributions		386,636.56		386,636.56
260 Workers' Compensation		7,371.39		7,371.39
270 Group Insurance – Self-Insurance		208,773.07		208,773.07
Total Personnel Services – Employee Benefits		\$690,009.68		\$690,009.68
300 Purchased Professional and Technical Services				
330 Other Professional Services		3,799.62		3,799.62
Total Purchased Professional and Technical Services		\$3,799.62		\$3,799.62
400 Purchased Property Services				
430 Repairs and Maintenance Services		2,099.58		2,099.58
Total Purchased Property Services		\$2,099.58		\$2,099.58
500 Other Purchased Services				
564 Tuition To Career and Technology Centers		1,057,306.85		1,057,306.85
580 Travel		4,101.69		4,101.69
Total Other Purchased Services		\$1,061,408.54		\$1,061,408.54
600 Supplies				
610 General Supplies		69,162.80		69,162.80
630 Food		2,577.97		2,577.97
640 Books and Periodicals		11,246.03		11,246.03
Total Supplies		\$82,986.80		\$82,986.80
700 Property				
752 Capital Equipment – Original and Additional		45,976.62		45,976.62
Total Property		\$45,976.62		\$45,976.62
800 Other Objects				
810 Dues and Fees		15,227.75		15,227.75
890 Miscellaneous Expenditures		8,699.00		8,699.00
Total Other Objects		\$23,926.75		\$23,926.75
Total 1300 Vocational Education		\$3,067,356.91		\$3,067,356.91

General Fund (10)

	<u>Elementary</u>	<u>Secondary</u>	<u>Federal</u>	<u>Total</u>
1400 Other Instructional Programs – Elementary / Secondary				
100 Personnel Services – Salaries				
100 Personnel Services – Salaries		181,345.30		181,345.30
Total Personnel Services – Salaries		\$181,345.30		\$181,345.30
200 Personnel Services – Employee Benefits				
210 Group Insurance – Contracted Provider		109.77		109.77
220 Social Security Contributions		13,482.75		13,482.75
230 PSERS Retirement Contributions		60,460.93		60,460.93
250 Unemployment Compensation		57.27		57.27
260 Workers' Compensation		1,155.03		1,155.03
270 Group Insurance – Self-Insurance		40,275.80		40,275.80
Total Personnel Services – Employee Benefits		\$115,541.55		\$115,541.55
300 Purchased Professional and Technical Services				
330 Other Professional Services		4,500.00		4,500.00
Total Purchased Professional and Technical Services		\$4,500.00		\$4,500.00
500 Other Purchased Services				
561 Tuition To Other School Districts Within the State	1,391.12	1,093.03		2,484.15
568 Tuition To Private Residential Rehabilitative Institutions (PRRI) [In-State] and Detention Centers	100,786.58	289,871.42		390,658.00
Total Other Purchased Services	\$102,177.70	\$290,964.45		\$393,142.15
600 Supplies				
610 General Supplies		865.20		865.20
Total Supplies		\$865.20		\$865.20
Total 1400 Other Instructional Programs – Elementary / Secondary	\$102,177.70	\$593,216.50		\$695,394.20

General Fund (10)

1410 Drivers' Education

100 Personnel Services – Salaries

	<u>Elementary</u>	<u>Secondary</u>	<u>Federal</u>	<u>Total</u>
100 Personnel Services – Salaries		76,867.70		76,867.70
Total Personnel Services – Salaries		\$76,867.70		\$76,867.70

200 Personnel Services – Employee Benefits

210 Group Insurance – Contracted Provider		35.88		35.88
220 Social Security Contributions		5,731.85		5,731.85
230 PSERS Retirement Contributions		25,533.99		25,533.99
260 Workers' Compensation		489.58		489.58
270 Group Insurance – Self-Insurance		9,986.14		9,986.14

Total Personnel Services – Employee Benefits		\$41,777.44		\$41,777.44
---	--	--------------------	--	--------------------

Total 1410 Drivers' Education		\$118,645.14		\$118,645.14
--------------------------------------	--	---------------------	--	---------------------

General Fund (10)

	<u>Elementary</u>	<u>Secondary</u>	<u>Federal</u>	<u>Total</u>
1430 Homebound Instruction				
100 Personnel Services – Salaries				
100 Personnel Services – Salaries		4,139.85		4,139.85
Total Personnel Services – Salaries		\$4,139.85		\$4,139.85
200 Personnel Services – Employee Benefits				
220 Social Security Contributions		308.15		308.15
230 PSERS Retirement Contributions		1,383.94		1,383.94
260 Workers’ Compensation		26.39		26.39
Total Personnel Services – Employee Benefits		\$1,718.48		\$1,718.48
500 Other Purchased Services				
568 Tuition To Private Residential Rehabilitative Institutions (PRRI) [In-State] and Detention Centers	5,666.81	2,096.30		7,763.11
Total Other Purchased Services	\$5,666.81	\$2,096.30		\$7,763.11
Total 1430 Homebound Instruction	\$5,666.81	\$7,954.63		\$13,621.44

General Fund (10)

	<u>Elementary</u>	<u>Secondary</u>	<u>Federal</u>	<u>Total</u>
1440 Alternative Regular Education Programs				
100 Personnel Services – Salaries				
100 Personnel Services – Salaries		100,337.75		100,337.75
Total Personnel Services – Salaries		\$100,337.75		\$100,337.75
200 Personnel Services – Employee Benefits				
210 Group Insurance – Contracted Provider		73.89		73.89
220 Social Security Contributions		7,442.75		7,442.75
230 PSERS Retirement Contributions		33,543.00		33,543.00
250 Unemployment Compensation		57.27		57.27
260 Workers' Compensation		639.06		639.06
270 Group Insurance – Self-Insurance		30,289.66		30,289.66
Total Personnel Services – Employee Benefits		\$72,045.63		\$72,045.63
300 Purchased Professional and Technical Services				
330 Other Professional Services		4,500.00		4,500.00
Total Purchased Professional and Technical Services		\$4,500.00		\$4,500.00
500 Other Purchased Services				
561 Tuition To Other School Districts Within the State	1,391.12	1,093.03		2,484.15
568 Tuition To Private Residential Rehabilitative Institutions (PRRI) [In-State] and Detention Centers	95,119.77	287,775.12		382,894.89
Total Other Purchased Services	\$96,510.89	\$288,868.15		\$385,379.04
600 Supplies				
610 General Supplies		865.20		865.20
Total Supplies		\$865.20		\$865.20
Total 1440 Alternative Regular Education Programs	\$96,510.89	\$466,616.73		\$563,127.62

LEA : 112671803 Dover Area SD

Printed 3/25/2020 8:28:03 AM

General Fund (10)

1441 Adjudicated / Court-Placed Programs

500 Other Purchased Services

561 Tuition To Other School Districts Within the State

Total Other Purchased Services

Total 1441 Adjudicated / Court-Placed Programs

	<u>Elementary</u>	<u>Secondary</u>	<u>Federal</u>	<u>Total</u>
561 Tuition To Other School Districts Within the State	1,391.12	1,093.03		2,484.15
Total Other Purchased Services	\$1,391.12	\$1,093.03		\$2,484.15
Total 1441 Adjudicated / Court-Placed Programs	\$1,391.12	\$1,093.03		\$2,484.15

General Fund (10)

1442 Alternative Education Programs

100 Personnel Services – Salaries

	<u>Elementary</u>	<u>Secondary</u>	<u>Federal</u>	<u>Total</u>
100 Personnel Services – Salaries		100,337.75		100,337.75
Total Personnel Services – Salaries		\$100,337.75		\$100,337.75

200 Personnel Services – Employee Benefits

210 Group Insurance – Contracted Provider		73.89		73.89
220 Social Security Contributions		7,442.75		7,442.75
230 PSERS Retirement Contributions		33,543.00		33,543.00
250 Unemployment Compensation		57.27		57.27
260 Workers' Compensation		639.06		639.06
270 Group Insurance – Self-Insurance		30,289.66		30,289.66
Total Personnel Services – Employee Benefits		\$72,045.63		\$72,045.63

300 Purchased Professional and Technical Services

330 Other Professional Services		4,500.00		4,500.00
Total Purchased Professional and Technical Services		\$4,500.00		\$4,500.00

500 Other Purchased Services

568 Tuition To Private Residential Rehabilitative Institutions (PRRI) [In-State] and Detention Centers	95,119.77	287,775.12		382,894.89
Total Other Purchased Services	\$95,119.77	\$287,775.12		\$382,894.89

600 Supplies

610 General Supplies		865.20		865.20
Total Supplies		\$865.20		\$865.20

Total 1442 Alternative Education Programs	\$95,119.77	\$465,523.70		\$560,643.47
--	--------------------	---------------------	--	---------------------

General Fund (10)

1700 Higher Education Programs for Secondary Students

Elementary

Secondary

Federal

Total

500 Other Purchased Services

566 Tuition To Institutions of Higher Education and Technical Institutes

24,150.00

Total Other Purchased Services

\$24,150.00

Total 1700 Higher Education Programs for Secondary Students

\$24,150.00

General Fund (10)

2000 Support Services

Total

100 Personnel Services – Salaries

100 Personnel Services – Salaries 5,754,435.98

Total Personnel Services – Salaries

\$5,754,435.98

200 Personnel Services – Employee Benefits

210 Group Insurance – Contracted Provider 11,388.32

220 Social Security Contributions 424,724.31

230 PSERS Retirement Contributions 1,898,141.98

240 Tuition Reimbursement 226,942.85

260 Workers' Compensation 36,440.18

270 Group Insurance – Self-Insurance 1,350,007.19

291 Other Retirement Plans 25,297.09

Total Personnel Services – Employee Benefits

\$3,972,941.92

300 Purchased Professional and Technical Services

310 Official / Administrative Services 26,378.00

322 Professional Educational Services – lus 488,574.63

323 Professional Educational Services – Other Educational Agencies 15,380.80

330 Other Professional Services 351,298.24

340 Technical Services 577,461.50

360 Employee Training and Development Services 18,993.14

390 Other Purchased Professional and Technical Services 14,643.98

Total Purchased Professional and Technical Services

\$1,492,730.29

400 Purchased Property Services

410 Cleaning Services 78,796.16

420 Utility Services 145,082.04

430 Repairs and Maintenance Services 378,419.56

440 Rentals 198,163.12

460 Extermination Services 5,286.51

490 Other Purchased Property Services 7,632.98

Total Purchased Property Services

\$813,380.37

500 Other Purchased Services

511 Student Transportation Services from Another LEA Within the State 21,648.95

513 Contracted Carriers 3,026,464.19

516 Student Transportation Services From the IU 188,651.98

520 Insurance – General 28,559.29

522 Automotive Liability Insurance 11,648.00

523 General Property and Liability Insurance 116,706.00

530 Communications 146,022.16

549 Other Advertising/Public Relations 9,030.46

580 Travel 7,680.56

595 IU Payments By Withholding 19,462.07

Total Other Purchased Services

\$3,575,873.66

600 Supplies

610 General Supplies 401,104.52

620 Energy 762,168.68

LEA : 112671803 Dover Area SD

Printed 3/25/2020 8:28:10 AM

General Fund (10)

2000 Support Services

Total

600 <u>Supplies</u>	
630 Food	15,040.99
640 Books and Periodicals	11,559.28
650 Supplies & Fees – Technology Related	153,875.57
Total Supplies	\$1,343,749.04
700 <u>Property</u>	
752 Capital Equipment – Original and Additional	14,195.56
756 Capitalized Technology Equipment – Original	1,258,490.20
762 Capitalized Equipment - Replacement	17,952.29
766 Capitalized Technology Equipment – Replacement	180,305.34
Total Property	\$1,470,943.39
800 <u>Other Objects</u>	
810 Dues and Fees	111,631.46
860 Grants To Municipal and Community Service Organizations	5,000.00
Total Other Objects	\$116,631.46
Total 2000 Support Services	\$18,540,686.11

General Fund (10)

	<u>Elementary</u>	<u>Secondary</u>	<u>Federal</u>	<u>Total</u>
2100 Support Services – Students				
100 Personnel Services – Salaries				
100 Personnel Services – Salaries	275,799.98	406,328.08		834,100.00
Total Personnel Services – Salaries	\$275,799.98	\$406,328.08		\$834,100.00
200 Personnel Services – Employee Benefits				
210 Group Insurance – Contracted Provider	187.20	234.00		913.76
220 Social Security Contributions	20,377.84	30,235.75		61,734.28
230 PSERS Retirement Contributions	91,874.19	135,494.78		278,173.14
260 Workers' Compensation	1,756.80	2,588.55		5,313.51
270 Group Insurance – Self-Insurance	46,085.61	63,169.58		152,372.70
Total Personnel Services – Employee Benefits	\$160,281.64	\$231,722.66		\$498,507.39
300 Purchased Professional and Technical Services				
322 Professional Educational Services – lus	175,471.83		125,451.83	300,923.66
323 Professional Educational Services – Other Educational Agencies		6,902.80	8,478.00	15,380.80
340 Technical Services				5,330.00
Total Purchased Professional and Technical Services	\$175,471.83	\$6,902.80	\$133,929.83	\$321,634.46
600 Supplies				
610 General Supplies	1,590.75	1,387.96		5,008.03
630 Food				887.22
640 Books and Periodicals	272.66			272.66
Total Supplies	\$1,863.41	\$1,387.96		\$6,167.91
800 Other Objects				
810 Dues and Fees				225.00
Total Other Objects				\$225.00
Total 2100 Support Services – Students	\$613,416.86	\$646,341.50	\$133,929.83	\$1,660,634.76

General Fund (10)

	<u>Elementary</u>	<u>Secondary</u>	<u>Federal</u>	<u>Total</u>
2120 Guidance Services				
100 Personnel Services – Salaries				
100 Personnel Services – Salaries	275,799.98	406,328.08		682,128.06
Total Personnel Services – Salaries	\$275,799.98	\$406,328.08		\$682,128.06
200 Personnel Services – Employee Benefits				
210 Group Insurance – Contracted Provider	187.20	234.00		421.20
220 Social Security Contributions	20,377.84	30,235.75		50,613.59
230 PSERS Retirement Contributions	91,874.19	135,494.78		227,368.97
260 Workers' Compensation	1,756.80	2,588.55		4,345.35
270 Group Insurance – Self-Insurance	46,085.61	63,169.58		109,255.19
Total Personnel Services – Employee Benefits	\$160,281.64	\$231,722.66		\$392,004.30
300 Purchased Professional and Technical Services				
323 Professional Educational Services – Other Educational Agencies		6,902.80	8,478.00	15,380.80
Total Purchased Professional and Technical Services		\$6,902.80	\$8,478.00	\$15,380.80
600 Supplies				
610 General Supplies	1,590.75	1,387.96		2,978.71
640 Books and Periodicals	272.66			272.66
Total Supplies	\$1,863.41	\$1,387.96		\$3,251.37
Total 2120 Guidance Services	\$437,945.03	\$646,341.50	\$8,478.00	\$1,092,764.53

General Fund (10)

2130 Attendance Services

Elementary

Secondary

Federal

Total

200 Personnel Services – Employee Benefits

270 Group Insurance – Self-Insurance

470.75

Total Personnel Services – Employee Benefits

\$470.75

Total 2130 Attendance Services

\$470.75

General Fund (10)

2140 Psychological Services

300 Purchased Professional and Technical Services

322 Professional Educational Services – lus

Total Purchased Professional and Technical Services

Total 2140 Psychological Services

	<u>Elementary</u>	<u>Secondary</u>	<u>Federal</u>	<u>Total</u>
322 Professional Educational Services – lus	175,471.83		125,451.83	300,923.66
Total Purchased Professional and Technical Services	\$175,471.83		\$125,451.83	\$300,923.66
Total 2140 Psychological Services	\$175,471.83		\$125,451.83	\$300,923.66

General Fund (10)

2160 Social Work Services

Elementary

Secondary

Federal

Total

100 Personnel Services – Salaries

100 Personnel Services – Salaries

70,614.04

Total Personnel Services – Salaries

\$70,614.04

200 Personnel Services – Employee Benefits

210 Group Insurance – Contracted Provider

391.10

220 Social Security Contributions

5,211.36

230 PSERS Retirement Contributions

23,606.20

260 Workers' Compensation

449.76

270 Group Insurance – Self-Insurance

20,378.27

Total Personnel Services – Employee Benefits

\$50,036.69

300 Purchased Professional and Technical Services

340 Technical Services

5,330.00

Total Purchased Professional and Technical Services

\$5,330.00

600 Supplies

610 General Supplies

2,029.32

630 Food

887.22

Total Supplies

\$2,916.54

800 Other Objects

810 Dues and Fees

225.00

Total Other Objects

\$225.00

Total 2160 Social Work Services

\$129,122.27

General Fund (10)

2170 Student Accounting Services

Elementary

Secondary

Federal

Total

100 Personnel Services – Salaries

100 Personnel Services – Salaries

81,357.90

Total Personnel Services – Salaries

\$81,357.90

200 Personnel Services – Employee Benefits

210 Group Insurance – Contracted Provider

101.46

220 Social Security Contributions

5,909.33

230 PSERS Retirement Contributions

27,197.97

260 Workers' Compensation

518.40

270 Group Insurance – Self-Insurance

22,268.49

Total Personnel Services – Employee Benefits

\$55,995.65

Total 2170 Student Accounting Services

\$137,353.55

General Fund (10)

	<u>Elementary</u>	<u>Secondary</u>	<u>Federal</u>	<u>Total</u>
2200 Support Services – Instructional Staff				
100 Personnel Services – Salaries				
100 Personnel Services – Salaries	641,982.79	411,563.61	34,650.00	1,088,196.40
Total Personnel Services – Salaries	\$641,982.79	\$411,563.61	\$34,650.00	\$1,088,196.40
200 Personnel Services – Employee Benefits				
210 Group Insurance – Contracted Provider	1,395.16	995.92		2,391.08
220 Social Security Contributions	47,010.59	30,590.91	2,640.97	80,242.47
230 PSERS Retirement Contributions	213,325.36	136,572.32	3,245.26	353,142.94
240 Tuition Reimbursement	90,126.76	112,809.24		202,936.00
260 Workers' Compensation	4,089.87	2,621.71	26.60	6,738.18
270 Group Insurance – Self-Insurance	152,362.54	74,804.40		227,166.94
291 Other Retirement Plans	5,780.37	4,541.72		10,322.09
Total Personnel Services – Employee Benefits	\$514,090.65	\$362,936.22	\$5,912.83	\$882,939.70
300 Purchased Professional and Technical Services				
322 Professional Educational Services – lus	1,184.96	931.04		2,116.00
330 Other Professional Services			56,859.71	56,859.71
340 Technical Services	306,861.36	241,105.35	8,477.00	556,443.71
360 Employee Training and Development Services	779.00	3,750.00		4,529.00
Total Purchased Professional and Technical Services	\$308,825.32	\$245,786.39	\$65,336.71	\$619,948.42
400 Purchased Property Services				
430 Repairs and Maintenance Services	4,113.60	3,232.12		7,345.72
Total Purchased Property Services	\$4,113.60	\$3,232.12		\$7,345.72
500 Other Purchased Services				
520 Insurance – General	5,019.44	3,943.85		8,963.29
580 Travel	1,432.09	1,727.21		3,159.30
Total Other Purchased Services	\$6,451.53	\$5,671.06		\$12,122.59
600 Supplies				
610 General Supplies	22,083.36	21,947.50	6,436.35	50,467.21
630 Food	205.32	161.33		366.65
640 Books and Periodicals	9,012.98	2,104.58		11,117.56
650 Supplies & Fees – Technology Related	53,182.99	41,786.63		94,969.62
Total Supplies	\$84,484.65	\$66,000.04	\$6,436.35	\$156,921.04
700 Property				
756 Capitalized Technology Equipment – Original	704,754.51	553,735.69		1,258,490.20
766 Capitalized Technology Equipment – Replacement	100,970.99	79,334.35		180,305.34
Total Property	\$805,725.50	\$633,070.04		\$1,438,795.54
800 Other Objects				
810 Dues and Fees	299.60	235.40		535.00
Total Other Objects	\$299.60	\$235.40		\$535.00
Total 2200 Support Services – Instructional Staff	\$2,365,973.64	\$1,728,494.88	\$112,335.89	\$4,206,804.41

General Fund (10)

	<u>Elementary</u>	<u>Secondary</u>	<u>Federal</u>	<u>Total</u>
2210 Supervision of Educational Media Services				
100 Personnel Services – Salaries				
100 Personnel Services – Salaries	42,929.45	33,730.29		76,659.74
Total Personnel Services – Salaries	\$42,929.45	\$33,730.29		\$76,659.74
200 Personnel Services – Employee Benefits				
210 Group Insurance – Contracted Provider	230.63	181.21		411.84
220 Social Security Contributions	3,201.94	2,515.81		5,717.75
230 PSERS Retirement Contributions	14,268.94	11,211.31		25,480.25
260 Workers' Compensation	273.40	214.82		488.22
270 Group Insurance – Self-Insurance	8,844.84	6,949.53		15,794.37
Total Personnel Services – Employee Benefits	\$26,819.75	\$21,072.68		\$47,892.43
Total 2210 Supervision of Educational Media Services	\$69,749.20	\$54,802.97		\$124,552.17

General Fund (10)

2211 Supervision of Educational Media Services – Head of Component

	<u>Elementary</u>	<u>Secondary</u>	<u>Federal</u>	<u>Total</u>
100 Personnel Services – Salaries				
100 Personnel Services – Salaries	42,929.45	33,730.29		76,659.74
Total Personnel Services – Salaries	\$42,929.45	\$33,730.29		\$76,659.74
200 Personnel Services – Employee Benefits				
210 Group Insurance – Contracted Provider	230.63	181.21		411.84
220 Social Security Contributions	3,201.94	2,515.81		5,717.75
230 PSERS Retirement Contributions	14,268.94	11,211.31		25,480.25
260 Workers' Compensation	273.40	214.82		488.22
270 Group Insurance – Self-Insurance	8,844.84	6,949.53		15,794.37
Total Personnel Services – Employee Benefits	\$26,819.75	\$21,072.68		\$47,892.43
Total 2211 Supervision of Educational Media Services – Head of Component	\$69,749.20	\$54,802.97		\$124,552.17

General Fund (10)

	<u>Elementary</u>	<u>Secondary</u>	<u>Federal</u>	<u>Total</u>
2220 Technology Support Services				
100 Personnel Services – Salaries				
100 Personnel Services – Salaries	1,662.26	1,306.07		2,968.33
Total Personnel Services – Salaries	\$1,662.26	\$1,306.07		\$2,968.33
200 Personnel Services – Employee Benefits				
220 Social Security Contributions	124.38	97.73		222.11
230 PSERS Retirement Contributions	555.69	436.62		992.31
260 Workers’ Compensation	10.59	8.32		18.91
Total Personnel Services – Employee Benefits	\$690.66	\$542.67		\$1,233.33
300 Purchased Professional and Technical Services				
340 Technical Services	106,273.23	83,500.39		189,773.62
Total Purchased Professional and Technical Services	\$106,273.23	\$83,500.39		\$189,773.62
400 Purchased Property Services				
430 Repairs and Maintenance Services	2,969.83	2,333.44		5,303.27
Total Purchased Property Services	\$2,969.83	\$2,333.44		\$5,303.27
600 Supplies				
610 General Supplies	19,147.94	15,044.81		34,192.75
630 Food	50.56	39.73		90.29
Total Supplies	\$19,198.50	\$15,084.54		\$34,283.04
700 Property				
756 Capitalized Technology Equipment – Original	39,956.05	31,394.04		71,350.09
Total Property	\$39,956.05	\$31,394.04		\$71,350.09
Total 2220 Technology Support Services	\$170,750.53	\$134,161.15		\$304,911.68

General Fund (10)

	<u>Elementary</u>	<u>Secondary</u>	<u>Federal</u>	<u>Total</u>
2240 Computer-Assisted Instruction Support Services				
300 <u>Purchased Professional and Technical Services</u>				
340 Technical Services	200,588.13	157,604.96	8,477.00	366,670.09
Total Purchased Professional and Technical Services	\$200,588.13	\$157,604.96	\$8,477.00	\$366,670.09
400 <u>Purchased Property Services</u>				
430 Repairs and Maintenance Services	1,143.77	898.68		2,042.45
Total Purchased Property Services	\$1,143.77	\$898.68		\$2,042.45
500 <u>Other Purchased Services</u>				
520 Insurance – General	5,019.44	3,943.85		8,963.29
Total Other Purchased Services	\$5,019.44	\$3,943.85		\$8,963.29
600 <u>Supplies</u>				
610 General Supplies	1,659.95	1,304.24		2,964.19
630 Food	154.76	121.60		276.36
650 Supplies & Fees – Technology Related	53,182.99	41,786.63		94,969.62
Total Supplies	\$54,997.70	\$43,212.47		\$98,210.17
700 <u>Property</u>				
756 Capitalized Technology Equipment – Original	664,798.46	522,341.65		1,187,140.11
766 Capitalized Technology Equipment – Replacement	100,970.99	79,334.35		180,305.34
Total Property	\$765,769.45	\$601,676.00		\$1,367,445.45
Total 2240 Computer-Assisted Instruction Support Services	\$1,027,518.49	\$807,335.96	\$8,477.00	\$1,843,331.45

General Fund (10)

	<u>Elementary</u>	<u>Secondary</u>	<u>Federal</u>	<u>Total</u>
2250 School Library Services				
100 Personnel Services – Salaries				
100 Personnel Services – Salaries	306,289.92	147,804.90		454,094.82
Total Personnel Services – Salaries	\$306,289.92	\$147,804.90		\$454,094.82
200 Personnel Services – Employee Benefits				
210 Group Insurance – Contracted Provider	187.20	46.80		234.00
220 Social Security Contributions	22,058.72	10,985.86		33,044.58
230 PSERS Retirement Contributions	102,392.99	49,411.16		151,804.15
260 Workers' Compensation	1,951.51	941.57		2,893.08
270 Group Insurance – Self-Insurance	88,426.90	24,569.24		112,996.14
Total Personnel Services – Employee Benefits	\$215,017.32	\$85,954.63		\$300,971.95
600 Supplies				
610 General Supplies	1,075.52	5,598.45		6,673.97
640 Books and Periodicals	9,012.98	2,104.58		11,117.56
Total Supplies	\$10,088.50	\$7,703.03		\$17,791.53
Total 2250 School Library Services	\$531,395.74	\$241,462.56		\$772,858.30

General Fund (10)

	<u>Elementary</u>	<u>Secondary</u>	<u>Federal</u>	<u>Total</u>
2260 Instruction and Curriculum Development Services				
100 Personnel Services – Salaries				
100 Personnel Services – Salaries	291,101.16	228,722.35		519,823.51
Total Personnel Services – Salaries	\$291,101.16	\$228,722.35		\$519,823.51
200 Personnel Services – Employee Benefits				
210 Group Insurance – Contracted Provider	977.33	767.91		1,745.24
220 Social Security Contributions	21,625.55	16,991.51		38,617.06
230 PSERS Retirement Contributions	96,107.74	75,513.23		171,620.97
260 Workers' Compensation	1,854.37	1,457.00		3,311.37
270 Group Insurance – Self-Insurance	55,090.80	43,285.63		98,376.43
291 Other Retirement Plans	5,780.37	4,541.72		10,322.09
Total Personnel Services – Employee Benefits	\$181,436.16	\$142,557.00		\$323,993.16
500 Other Purchased Services				
580 Travel	1,432.09	1,125.21		2,557.30
Total Other Purchased Services	\$1,432.09	\$1,125.21		\$2,557.30
600 Supplies				
610 General Supplies	199.95			199.95
Total Supplies	\$199.95			\$199.95
800 Other Objects				
810 Dues and Fees	299.60	235.40		535.00
Total Other Objects	\$299.60	\$235.40		\$535.00
Total 2260 Instruction and Curriculum Development Services	\$474,468.96	\$372,639.96		\$847,108.92

General Fund (10)

	<u>Elementary</u>	<u>Secondary</u>	<u>Federal</u>	<u>Total</u>
2270 Instructional Staff Professional Development Services				
100 Personnel Services – Salaries				
100 Personnel Services – Salaries			34,650.00	34,650.00
Total Personnel Services – Salaries			\$34,650.00	\$34,650.00
200 Personnel Services – Employee Benefits				
220 Social Security Contributions			2,640.97	2,640.97
230 PSERS Retirement Contributions			3,245.26	3,245.26
240 Tuition Reimbursement	90,126.76	112,809.24		202,936.00
260 Workers' Compensation			26.60	26.60
Total Personnel Services – Employee Benefits	\$90,126.76	\$112,809.24	\$5,912.83	\$208,848.83
300 Purchased Professional and Technical Services				
322 Professional Educational Services – Ius	1,184.96	931.04		2,116.00
330 Other Professional Services			56,859.71	56,859.71
360 Employee Training and Development Services	779.00	3,750.00		4,529.00
Total Purchased Professional and Technical Services	\$1,963.96	\$4,681.04	\$56,859.71	\$63,504.71
500 Other Purchased Services				
580 Travel		602.00		602.00
Total Other Purchased Services		\$602.00		\$602.00
600 Supplies				
610 General Supplies			6,436.35	6,436.35
Total Supplies			\$6,436.35	\$6,436.35
Total 2270 Instructional Staff Professional Development Services	\$92,090.72	\$118,092.28	\$103,858.89	\$314,041.89

General Fund (10)

	<u>Elementary</u>	<u>Secondary</u>	<u>Federal</u>	<u>Total</u>
2300 Support Services – Administration				
100 Personnel Services – Salaries				
100 Personnel Services – Salaries	643,795.64	610,387.95		1,503,374.20
Total Personnel Services – Salaries	\$643,795.64	\$610,387.95		\$1,503,374.20
200 Personnel Services – Employee Benefits				
210 Group Insurance – Contracted Provider	2,240.24	1,933.55		4,936.91
220 Social Security Contributions	47,456.34	45,153.89		111,417.24
230 PSERS Retirement Contributions	214,318.20	202,059.07		497,889.26
260 Workers' Compensation	4,101.48	3,888.07		9,576.67
270 Group Insurance – Self-Insurance	177,400.17	146,247.21		363,390.35
291 Other Retirement Plans	3,875.00	3,000.00		8,875.00
Total Personnel Services – Employee Benefits	\$449,391.43	\$402,281.79		\$996,085.43
300 Purchased Professional and Technical Services				
310 Official / Administrative Services				26,378.00
330 Other Professional Services				58,678.40
340 Technical Services				1,893.00
390 Other Purchased Professional and Technical Services				14,493.98
Total Purchased Professional and Technical Services				\$101,443.38
500 Other Purchased Services				
520 Insurance – General				19,296.00
549 Other Advertising/Public Relations				5,251.36
580 Travel				476.84
Total Other Purchased Services				\$25,024.20
600 Supplies				
610 General Supplies	2,757.30	833.45		29,938.61
630 Food	1,119.19	2,939.16		6,210.98
640 Books and Periodicals	54.43	114.63		169.06
Total Supplies	\$3,930.92	\$3,887.24		\$36,318.65
800 Other Objects				
810 Dues and Fees	2,534.00	980.00		5,807.00
860 Grants To Municipal and Community Service Organizations				5,000.00
Total Other Objects	\$2,534.00	\$980.00		\$10,807.00
Total 2300 Support Services – Administration	\$1,099,651.99	\$1,017,536.98		\$2,673,052.86

General Fund (10)

2310 Board Services

Elementary

Secondary

Federal

Total

300 Purchased Professional and Technical Services

310 Official / Administrative Services

2,233.00

390 Other Purchased Professional and Technical Services

14,493.98

Total Purchased Professional and Technical Services

\$16,726.98

500 Other Purchased Services

520 Insurance – General

19,296.00

Total Other Purchased Services

\$19,296.00

600 Supplies

610 General Supplies

2,240.44

630 Food

1,010.70

Total Supplies

\$3,251.14

Total 2310 Board Services

\$39,274.12

General Fund (10)

	<u>Elementary</u>	<u>Secondary</u>	<u>Federal</u>	<u>Total</u>
2330 Tax Assessment and Collection Services				
200 Personnel Services – Employee Benefits				
220 Social Security Contributions				1,847.08
Total Personnel Services – Employee Benefits				\$1,847.08
300 Purchased Professional and Technical Services				
310 Official / Administrative Services				24,145.00
Total Purchased Professional and Technical Services				\$24,145.00
600 Supplies				
610 General Supplies				9,529.77
Total Supplies				\$9,529.77
Total 2330 Tax Assessment and Collection Services				\$35,521.85

General Fund (10)

2350 Legal and Accounting Services

Elementary

Secondary

Federal

Total

300 Purchased Professional and Technical Services

330 Other Professional Services

58,678.40

Total Purchased Professional and Technical Services

\$58,678.40

Total 2350 Legal and Accounting Services

\$58,678.40

General Fund (10)

2360 Office of the Superintendent / Executive Director Services

Elementary

Secondary

Federal

Total

100 Personnel Services – Salaries

100 Personnel Services – Salaries 212,086.61

Total Personnel Services – Salaries \$212,086.61

200 Personnel Services – Employee Benefits

210 Group Insurance – Contracted Provider 586.90

220 Social Security Contributions 14,176.20

230 PSERS Retirement Contributions 69,108.24

260 Workers' Compensation 1,350.87

270 Group Insurance – Self-Insurance 36,078.25

291 Other Retirement Plans 2,000.00

Total Personnel Services – Employee Benefits \$123,300.46

500 Other Purchased Services

549 Other Advertising/Public Relations 437.00

580 Travel 476.84

Total Other Purchased Services \$913.84

600 Supplies

610 General Supplies 4,655.48

630 Food 1,141.93

Total Supplies \$5,797.41

800 Other Objects

810 Dues and Fees 2,293.00

Total Other Objects \$2,293.00

Total 2360 Office of the Superintendent / Executive Director Services \$344,391.32

General Fund (10)

	<u>Elementary</u>	<u>Secondary</u>	<u>Federal</u>	<u>Total</u>
2370 Community Relations Services				
100 Personnel Services – Salaries				
100 Personnel Services – Salaries				37,104.00
Total Personnel Services – Salaries				\$37,104.00
200 Personnel Services – Employee Benefits				
210 Group Insurance – Contracted Provider				176.22
220 Social Security Contributions				2,783.73
230 PSERS Retirement Contributions				12,403.75
260 Workers' Compensation				236.25
270 Group Insurance – Self-Insurance				3,664.72
Total Personnel Services – Employee Benefits				\$19,264.67
300 Purchased Professional and Technical Services				
340 Technical Services				1,893.00
Total Purchased Professional and Technical Services				\$1,893.00
500 Other Purchased Services				
549 Other Advertising/Public Relations				4,814.36
Total Other Purchased Services				\$4,814.36
600 Supplies				
610 General Supplies				787.95
Total Supplies				\$787.95
Total 2370 Community Relations Services				\$63,863.98

General Fund (10)

	<u>Elementary</u>	<u>Secondary</u>	<u>Federal</u>	<u>Total</u>
2380 Office of the Principal Services				
100 Personnel Services – Salaries				
100 Personnel Services – Salaries	643,795.64	610,387.95		1,254,183.59
Total Personnel Services – Salaries	\$643,795.64	\$610,387.95		\$1,254,183.59
200 Personnel Services – Employee Benefits				
210 Group Insurance – Contracted Provider	2,240.24	1,933.55		4,173.79
220 Social Security Contributions	47,456.34	45,153.89		92,610.23
230 PSERS Retirement Contributions	214,318.20	202,059.07		416,377.27
260 Workers' Compensation	4,101.48	3,888.07		7,989.55
270 Group Insurance – Self-Insurance	177,400.17	146,247.21		323,647.38
291 Other Retirement Plans	3,875.00	3,000.00		6,875.00
Total Personnel Services – Employee Benefits	\$449,391.43	\$402,281.79		\$851,673.22
600 Supplies				
610 General Supplies	2,757.30	833.45		3,590.75
630 Food	1,119.19	2,939.16		4,058.35
640 Books and Periodicals	54.43	114.63		169.06
Total Supplies	\$3,930.92	\$3,887.24		\$7,818.16
800 Other Objects				
810 Dues and Fees	2,534.00	980.00		3,514.00
Total Other Objects	\$2,534.00	\$980.00		\$3,514.00
Total 2380 Office of the Principal Services	\$1,099,651.99	\$1,017,536.98		\$2,117,188.97

LEA : 112671803 Dover Area SD

Printed 3/25/2020 8:28:10 AM

General Fund (10)

2390 Other Administration Services

Elementary

Secondary

Federal

Total

600 Supplies

610 General Supplies

9,134.22

Total Supplies

\$9,134.22

800 Other Objects

860 Grants To Municipal and Community Service Organizations

5,000.00

Total Other Objects

\$5,000.00

Total 2390 Other Administration Services

\$14,134.22

General Fund (10)

	<u>Elementary</u>	<u>Secondary</u>	<u>Federal</u>	<u>Total</u>
2400 Support Services – Pupil Health				
100 Personnel Services – Salaries				
100 Personnel Services – Salaries				328,880.90
Total Personnel Services – Salaries				\$328,880.90
200 Personnel Services – Employee Benefits				
210 Group Insurance – Contracted Provider				216.39
220 Social Security Contributions				24,025.41
230 PSERS Retirement Contributions				109,060.93
260 Workers' Compensation				2,095.32
270 Group Insurance – Self-Insurance				92,714.29
Total Personnel Services – Employee Benefits				\$228,112.34
300 Purchased Professional and Technical Services				
322 Professional Educational Services – lus				185,534.97
330 Other Professional Services				830.94
Total Purchased Professional and Technical Services				\$186,365.91
500 Other Purchased Services				
580 Travel				26.86
Total Other Purchased Services				\$26.86
600 Supplies				
610 General Supplies				7,604.77
Total Supplies				\$7,604.77
Total 2400 Support Services – Pupil Health				\$750,990.78

General Fund (10)

2420 Medical Services

	<u>Elementary</u>	<u>Secondary</u>	<u>Federal</u>	<u>Total</u>
100 Personnel Services – Salaries				
100 Personnel Services – Salaries				328,880.90
Total Personnel Services – Salaries				\$328,880.90
200 Personnel Services – Employee Benefits				
210 Group Insurance – Contracted Provider				216.39
220 Social Security Contributions				24,025.41
230 PSERS Retirement Contributions				109,060.93
260 Workers' Compensation				2,095.32
270 Group Insurance – Self-Insurance				92,714.29
Total Personnel Services – Employee Benefits				\$228,112.34
300 Purchased Professional and Technical Services				
322 Professional Educational Services – lus				185,534.97
330 Other Professional Services				830.94
Total Purchased Professional and Technical Services				\$186,365.91
500 Other Purchased Services				
580 Travel				26.86
Total Other Purchased Services				\$26.86
600 Supplies				
610 General Supplies				7,604.77
Total Supplies				\$7,604.77
Total 2420 Medical Services				\$750,990.78

General Fund (10)

	<u>Elementary</u>	<u>Secondary</u>	<u>Federal</u>	<u>Total</u>
2500 Support Services – Business				
100 Personnel Services – Salaries				
100 Personnel Services – Salaries				395,541.61
Total Personnel Services – Salaries				\$395,541.61
200 Personnel Services – Employee Benefits				
210 Group Insurance – Contracted Provider				1,041.34
220 Social Security Contributions				28,542.57
230 PSERS Retirement Contributions				130,441.62
260 Workers' Compensation				2,519.63
270 Group Insurance – Self-Insurance				103,724.42
291 Other Retirement Plans				3,100.00
Total Personnel Services – Employee Benefits				\$269,369.58
300 Purchased Professional and Technical Services				
330 Other Professional Services				30,950.00
340 Technical Services				6,481.84
Total Purchased Professional and Technical Services				\$37,431.84
500 Other Purchased Services				
520 Insurance – General				300.00
549 Other Advertising/Public Relations				701.50
580 Travel				100.00
Total Other Purchased Services				\$1,101.50
600 Supplies				
610 General Supplies				26,958.54
630 Food				244.02
650 Supplies & Fees – Technology Related				48,302.00
Total Supplies				\$75,504.56
700 Property				
762 Capitalized Equipment - Replacement				(17.96)
Total Property				(\$17.96)
800 Other Objects				
810 Dues and Fees				102,528.13
Total Other Objects				\$102,528.13
Total 2500 Support Services – Business				\$881,459.26

General Fund (10)

2510 Fiscal Services

Elementary Secondary Federal Total

100	<u>Personnel Services – Salaries</u>				
	100 Personnel Services – Salaries				352,640.71
Total Personnel Services – Salaries					\$352,640.71
200	<u>Personnel Services – Employee Benefits</u>				
	210 Group Insurance – Contracted Provider				1,039.80
	220 Social Security Contributions				25,339.43
	230 PSERS Retirement Contributions				116,099.83
	260 Workers' Compensation				2,246.40
	270 Group Insurance – Self-Insurance				96,160.54
	291 Other Retirement Plans				3,100.00
Total Personnel Services – Employee Benefits					\$243,986.00
300	<u>Purchased Professional and Technical Services</u>				
	330 Other Professional Services				30,950.00
	340 Technical Services				6,481.84
Total Purchased Professional and Technical Services					\$37,431.84
500	<u>Other Purchased Services</u>				
	520 Insurance – General				300.00
	549 Other Advertising/Public Relations				701.50
	580 Travel				100.00
Total Other Purchased Services					\$1,101.50
600	<u>Supplies</u>				
	610 General Supplies				17,107.26
	630 Food				244.02
	650 Supplies & Fees – Technology Related				48,302.00
Total Supplies					\$65,653.28
700	<u>Property</u>				
	762 Capitalized Equipment - Replacement				(17.96)
Total Property					(\$17.96)
800	<u>Other Objects</u>				
	810 Dues and Fees				102,528.13
Total Other Objects					\$102,528.13
Total 2510 Fiscal Services					\$803,323.50

General Fund (10)

	<u>Elementary</u>	<u>Secondary</u>	<u>Federal</u>	<u>Total</u>
2511 Supervision of Fiscal Services - Head of Component				
100 Personnel Services – Salaries				
100 Personnel Services – Salaries				170,295.01
Total Personnel Services – Salaries				\$170,295.01
200 Personnel Services – Employee Benefits				
210 Group Insurance – Contracted Provider				551.00
220 Social Security Contributions				12,397.12
230 PSERS Retirement Contributions				55,141.77
260 Workers' Compensation				1,084.88
270 Group Insurance – Self-Insurance				35,770.37
291 Other Retirement Plans				2,000.00
Total Personnel Services – Employee Benefits				\$106,945.14
300 Purchased Professional and Technical Services				
340 Technical Services				6,481.84
Total Purchased Professional and Technical Services				\$6,481.84
500 Other Purchased Services				
520 Insurance – General				300.00
549 Other Advertising/Public Relations				701.50
580 Travel				100.00
Total Other Purchased Services				\$1,101.50
600 Supplies				
610 General Supplies				17,107.26
630 Food				244.02
650 Supplies & Fees – Technology Related				48,302.00
Total Supplies				\$65,653.28
700 Property				
762 Capitalized Equipment - Replacement				(17.96)
Total Property				(\$17.96)
800 Other Objects				
810 Dues and Fees				872.49
Total Other Objects				\$872.49
Total 2511 Supervision of Fiscal Services - Head of Component				\$351,331.30

General Fund (10)

2513 Receiving and Disbursing Funds Services

Elementary

Secondary

Federal

Total

100 Personnel Services – Salaries

100 Personnel Services – Salaries

76,726.17

Total Personnel Services – Salaries

\$76,726.17

200 Personnel Services – Employee Benefits

210 Group Insurance – Contracted Provider

56.16

220 Social Security Contributions

5,423.15

230 PSERS Retirement Contributions

25,649.58

260 Workers' Compensation

488.73

270 Group Insurance – Self-Insurance

25,409.16

Total Personnel Services – Employee Benefits

\$57,026.78

Total 2513 Receiving and Disbursing Funds Services

\$133,752.95

General Fund (10)

2514 Payroll Services

100 Personnel Services – Salaries

	<u>Elementary</u>	<u>Secondary</u>	<u>Federal</u>	<u>Total</u>
100 Personnel Services – Salaries				35,579.53
Total Personnel Services – Salaries				\$35,579.53
200 Personnel Services – Employee Benefits				
210 Group Insurance – Contracted Provider				22.88
220 Social Security Contributions				2,438.15
230 PSERS Retirement Contributions				11,894.21
260 Workers' Compensation				226.63
270 Group Insurance – Self-Insurance				15,466.59
Total Personnel Services – Employee Benefits				\$30,048.46
Total 2514 Payroll Services				\$65,627.99

General Fund (10)

2515 Financial Accounting Services

Elementary

Secondary

Federal

Total

100 Personnel Services – Salaries

100 Personnel Services – Salaries

70,040.00

Total Personnel Services – Salaries

\$70,040.00

200 Personnel Services – Employee Benefits

210 Group Insurance – Contracted Provider

409.76

220 Social Security Contributions

5,081.01

230 PSERS Retirement Contributions

23,414.27

260 Workers' Compensation

446.16

270 Group Insurance – Self-Insurance

19,514.42

291 Other Retirement Plans

1,100.00

Total Personnel Services – Employee Benefits

\$49,965.62

Total 2515 Financial Accounting Services

\$120,005.62

General Fund (10)

2516 Internal Auditing Services

Elementary

Secondary

Federal

Total

300 Purchased Professional and Technical Services

330 Other Professional Services

30,950.00

Total Purchased Professional and Technical Services

\$30,950.00

Total 2516 Internal Auditing Services

\$30,950.00

LEA : 112671803 Dover Area SD

Printed 3/25/2020 8:28:10 AM

General Fund (10)

2519 Other Fiscal Services

Elementary

Secondary

Federal

Total

800 Other Objects

810 Dues and Fees

101,655.64

Total Other Objects

\$101,655.64

Total 2519 Other Fiscal Services

\$101,655.64

General Fund (10)

2530 Warehousing and Distributing Services

Elementary

Secondary

Federal

Total

100 Personnel Services – Salaries

100 Personnel Services – Salaries

29,392.90

Total Personnel Services – Salaries

\$29,392.90

200 Personnel Services – Employee Benefits

210 Group Insurance – Contracted Provider

1.54

220 Social Security Contributions

2,191.37

230 PSERS Retirement Contributions

9,826.07

260 Workers' Compensation

187.21

270 Group Insurance – Self-Insurance

7,563.88

Total Personnel Services – Employee Benefits

\$19,770.07

Total 2530 Warehousing and Distributing Services

\$49,162.97

General Fund (10)

	<u>Elementary</u>	<u>Secondary</u>	<u>Federal</u>	<u>Total</u>
2540 Printing, Publishing and Duplicating Services				
100 Personnel Services – Salaries				
100 Personnel Services – Salaries				13,508.00
Total Personnel Services – Salaries				\$13,508.00
200 Personnel Services – Employee Benefits				
220 Social Security Contributions				1,011.77
230 PSERS Retirement Contributions				4,515.72
260 Workers' Compensation				86.02
Total Personnel Services – Employee Benefits				\$5,613.51
600 Supplies				
610 General Supplies				9,851.28
Total Supplies				\$9,851.28
Total 2540 Printing, Publishing and Duplicating Services				\$28,972.79

LEA : 112671803 Dover Area SD

Printed 3/25/2020 8:28:10 AM

General Fund (10)

	<u>Elementary</u>	<u>Secondary</u>	<u>Federal</u>	<u>Total</u>
2600 Operation and Maintenance of Plant Services				
100 Personnel Services – Salaries				
100 Personnel Services – Salaries				1,235,673.71
Total Personnel Services – Salaries				\$1,235,673.71
200 Personnel Services – Employee Benefits				
210 Group Insurance – Contracted Provider				1,235.21
220 Social Security Contributions				91,797.50
230 PSERS Retirement Contributions				407,546.97
260 Workers' Compensation				7,855.28
270 Group Insurance – Self-Insurance				305,673.76
291 Other Retirement Plans				1,500.00
Total Personnel Services – Employee Benefits				\$815,608.72
300 Purchased Professional and Technical Services				
330 Other Professional Services				190,561.88
Total Purchased Professional and Technical Services				\$190,561.88
400 Purchased Property Services				
410 Cleaning Services				78,796.16
420 Utility Services				145,082.04
430 Repairs and Maintenance Services				371,073.84
440 Rentals				198,163.12
460 Extermination Services				5,286.51
490 Other Purchased Property Services				7,632.98
Total Purchased Property Services				\$806,034.65
500 Other Purchased Services				
522 Automotive Liability Insurance				11,648.00
523 General Property and Liability Insurance				116,706.00
530 Communications				129,991.34
580 Travel				445.02
Total Other Purchased Services				\$258,790.36
600 Supplies				
610 General Supplies	156,593.68	123,037.89		279,631.57
620 Energy				735,833.89
650 Supplies & Fees – Technology Related				10,603.95
Total Supplies	\$156,593.68	\$123,037.89		\$1,026,069.41
700 Property				
752 Capital Equipment – Original and Additional				14,195.56
762 Capitalized Equipment - Replacement				17,970.25
Total Property				\$32,165.81
800 Other Objects				
810 Dues and Fees				2,463.89
Total Other Objects				\$2,463.89
Total 2600 Operation and Maintenance of Plant Services	\$156,593.68	\$123,037.89		\$4,367,368.43

General Fund (10)

2610 Supervision of Operation and Maintenance of Plant Services

Elementary

Secondary

Federal

Total

100 Personnel Services – Salaries

100 Personnel Services – Salaries

136,625.17

Total Personnel Services – Salaries

\$136,625.17

200 Personnel Services – Employee Benefits

210 Group Insurance – Contracted Provider

519.57

220 Social Security Contributions

10,259.28

230 PSERS Retirement Contributions

45,673.71

260 Workers' Compensation

870.26

270 Group Insurance – Self-Insurance

20,611.69

291 Other Retirement Plans

1,500.00

Total Personnel Services – Employee Benefits

\$79,434.51

Total 2610 Supervision of Operation and Maintenance of Plant Services

\$216,059.68

General Fund (10)

2611 Supervision of Operation and Maintenance of Plant Services – Head of Component

Elementary

Secondary

Federal

Total

100 Personnel Services – Salaries

100 Personnel Services – Salaries

136,625.17

Total Personnel Services – Salaries

\$136,625.17

200 Personnel Services – Employee Benefits

210 Group Insurance – Contracted Provider

519.57

220 Social Security Contributions

10,259.28

230 PSERS Retirement Contributions

45,673.71

260 Workers' Compensation

870.26

270 Group Insurance – Self-Insurance

20,611.69

291 Other Retirement Plans

1,500.00

Total Personnel Services – Employee Benefits

\$79,434.51

Total 2611 Supervision of Operation and Maintenance of Plant Services – Head of Component

\$216,059.68

General Fund (10)

	<u>Elementary</u>	<u>Secondary</u>	<u>Federal</u>	<u>Total</u>
2620 Operation of Buildings Services				
100 Personnel Services – Salaries				
100 Personnel Services – Salaries				895,597.67
Total Personnel Services – Salaries				\$895,597.67
200 Personnel Services – Employee Benefits				
210 Group Insurance – Contracted Provider				563.19
220 Social Security Contributions				66,535.02
230 PSERS Retirement Contributions				294,537.80
260 Workers' Compensation				5,689.29
270 Group Insurance – Self-Insurance				224,084.30
Total Personnel Services – Employee Benefits				\$591,409.60
300 Purchased Professional and Technical Services				
330 Other Professional Services				2,204.00
Total Purchased Professional and Technical Services				\$2,204.00
400 Purchased Property Services				
410 Cleaning Services				49,673.99
420 Utility Services				145,082.04
430 Repairs and Maintenance Services				325,155.80
440 Rentals				66.00
460 Extermination Services				5,286.51
Total Purchased Property Services				\$525,264.34
500 Other Purchased Services				
523 General Property and Liability Insurance				116,706.00
530 Communications				129,991.34
580 Travel				335.52
Total Other Purchased Services				\$247,032.86
600 Supplies				
610 General Supplies	133,767.84	105,103.30		238,871.14
620 Energy				722,617.72
650 Supplies & Fees – Technology Related				5,820.00
Total Supplies	\$133,767.84	\$105,103.30		\$967,308.86
700 Property				
762 Capitalized Equipment - Replacement				6,433.35
Total Property				\$6,433.35
800 Other Objects				
810 Dues and Fees				2,093.89
Total Other Objects				\$2,093.89
Total 2620 Operation of Buildings Services	\$133,767.84	\$105,103.30		\$3,237,344.57

General Fund (10)

2630 Care and Upkeep of Grounds Services

Elementary

Secondary

Federal

Total

400 Purchased Property Services

410 Cleaning Services

28,480.50

430 Repairs and Maintenance Services

7,020.84

Total Purchased Property Services

\$35,501.34

600 Supplies

610 General Supplies

18,302.00

14,380.14

32,682.14

Total Supplies

\$18,302.00

\$14,380.14

\$32,682.14

700 Property

762 Capitalized Equipment - Replacement

11,536.90

Total Property

\$11,536.90

800 Other Objects

810 Dues and Fees

250.00

Total Other Objects

\$250.00

Total 2630 Care and Upkeep of Grounds Services

\$18,302.00

\$14,380.14

\$79,970.38

General Fund (10)

	<u>Elementary</u>	<u>Secondary</u>	<u>Federal</u>	<u>Total</u>
2640 Care and Upkeep of Equipment Services				
100 Personnel Services – Salaries				
100 Personnel Services – Salaries				203,450.87
Total Personnel Services – Salaries				\$203,450.87
200 Personnel Services – Employee Benefits				
210 Group Insurance – Contracted Provider				152.45
220 Social Security Contributions				15,003.20
230 PSERS Retirement Contributions				67,335.46
260 Workers' Compensation				1,295.73
270 Group Insurance – Self-Insurance				60,977.77
Total Personnel Services – Employee Benefits				\$144,764.61
400 Purchased Property Services				
410 Cleaning Services				641.67
430 Repairs and Maintenance Services				31,322.13
440 Rentals				198,097.12
Total Purchased Property Services				\$230,060.92
Total 2640 Care and Upkeep of Equipment Services				\$578,276.40

General Fund (10)

	<u>Elementary</u>	<u>Secondary</u>	<u>Federal</u>	<u>Total</u>
2650 Vehicle Operation and Maintenance Services (Other Than Student Transportation Vehicles)				
400 <u>Purchased Property Services</u>				
430 Repairs and Maintenance Services				7,575.07
Total Purchased Property Services				\$7,575.07
500 <u>Other Purchased Services</u>				
522 Automotive Liability Insurance				11,648.00
Total Other Purchased Services				\$11,648.00
600 <u>Supplies</u>				
610 General Supplies	473.23	371.82		845.05
620 Energy				13,216.17
Total Supplies	\$473.23	\$371.82		\$14,061.22
Total 2650 Vehicle Operation and Maintenance Services (Other Than Student Transportation Vehicles)	\$473.23	\$371.82		\$33,284.29

General Fund (10)

	<u>Elementary</u>	<u>Secondary</u>	<u>Federal</u>	<u>Total</u>
2660 Safety and Security Services				
300 <u>Purchased Professional and Technical Services</u>				
330 Other Professional Services				188,357.88
Total Purchased Professional and Technical Services				\$188,357.88
400 <u>Purchased Property Services</u>				
490 Other Purchased Property Services				7,632.98
Total Purchased Property Services				\$7,632.98
500 <u>Other Purchased Services</u>				
580 Travel				109.50
Total Other Purchased Services				\$109.50
600 <u>Supplies</u>				
610 General Supplies	4,050.61	3,182.63		7,233.24
650 Supplies & Fees – Technology Related				4,783.95
Total Supplies	\$4,050.61	\$3,182.63		\$12,017.19
700 <u>Property</u>				
752 Capital Equipment – Original and Additional				14,195.56
Total Property				\$14,195.56
800 <u>Other Objects</u>				
810 Dues and Fees				120.00
Total Other Objects				\$120.00
Total 2660 Safety and Security Services	\$4,050.61	\$3,182.63		\$222,433.11

General Fund (10)

	<u>Elementary</u>	<u>Secondary</u>	<u>Federal</u>	<u>Total</u>
2700 Student Transportation Services				
100 Personnel Services – Salaries				
100 Personnel Services – Salaries				32,477.55
Total Personnel Services – Salaries				\$32,477.55
200 Personnel Services – Employee Benefits				
210 Group Insurance – Contracted Provider				25.90
220 Social Security Contributions				2,199.41
230 PSERS Retirement Contributions				9,849.31
260 Workers' Compensation				200.10
270 Group Insurance – Self-Insurance				14,504.05
Total Personnel Services – Employee Benefits				\$26,778.77
300 Purchased Professional and Technical Services				
340 Technical Services				5,102.95
Total Purchased Professional and Technical Services				\$5,102.95
500 Other Purchased Services				
511 Student Transportation Services from Another LEA Within the State				21,648.95
513 Contracted Carriers				3,026,464.19
516 Student Transportation Services From the IU				188,651.98
530 Communications				16,030.82
580 Travel				94.58
Total Other Purchased Services				\$3,252,890.52
600 Supplies				
610 General Supplies				1,458.89
620 Energy				26,334.79
Total Supplies				\$27,793.68
800 Other Objects				
810 Dues and Fees				72.44
Total Other Objects				\$72.44
Total 2700 Student Transportation Services				\$3,345,115.91

General Fund (10)

	<u>Elementary</u>	<u>Secondary</u>	<u>Federal</u>	<u>Total</u>
2710 Supervision of Student Transportation Services				
100 Personnel Services – Salaries				
100 Personnel Services – Salaries				30,526.80
Total Personnel Services – Salaries				\$30,526.80
200 Personnel Services – Employee Benefits				
210 Group Insurance – Contracted Provider				25.90
220 Social Security Contributions				2,050.16
230 PSERS Retirement Contributions				9,849.31
260 Workers' Compensation				187.69
270 Group Insurance – Self-Insurance				14,504.05
Total Personnel Services – Employee Benefits				\$26,617.11
600 Supplies				
610 General Supplies				1,458.89
Total Supplies				\$1,458.89
800 Other Objects				
810 Dues and Fees				72.44
Total Other Objects				\$72.44
Total 2710 Supervision of Student Transportation Services				\$58,675.24

General Fund (10)

2711 Supervision of Student Transportation Services – Head of Component

Elementary

Secondary

Federal

Total

100 Personnel Services – Salaries

100 Personnel Services – Salaries

30,526.80

Total Personnel Services – Salaries

\$30,526.80

200 Personnel Services – Employee Benefits

210 Group Insurance – Contracted Provider

25.90

220 Social Security Contributions

2,050.16

230 PSERS Retirement Contributions

9,849.31

260 Workers' Compensation

187.69

270 Group Insurance – Self-Insurance

14,504.05

Total Personnel Services – Employee Benefits

\$26,617.11

600 Supplies

610 General Supplies

1,458.89

Total Supplies

\$1,458.89

800 Other Objects

810 Dues and Fees

72.44

Total Other Objects

\$72.44

Total 2711 Supervision of Student Transportation Services – Head of Component

\$58,675.24

LEA : 112671803 Dover Area SD

Printed 3/25/2020 8:28:10 AM

General Fund (10)

2720 Vehicle Operation Services

Elementary

Secondary

Federal

Total

500 Other Purchased Services

511 Student Transportation Services from Another LEA Within the State

21,648.95

513 Contracted Carriers

2,701,664.60

516 Student Transportation Services From the IU

188,651.98

Total Other Purchased Services

\$2,911,965.53

Total 2720 Vehicle Operation Services

\$2,911,965.53

General Fund (10)

2730 Monitoring Services

Elementary

Secondary

Federal

Total

100 Personnel Services – Salaries

100 Personnel Services – Salaries

1,950.75

Total Personnel Services – Salaries

\$1,950.75

200 Personnel Services – Employee Benefits

220 Social Security Contributions

149.25

260 Workers' Compensation

12.41

Total Personnel Services – Employee Benefits

\$161.66

500 Other Purchased Services

530 Communications

16,030.82

580 Travel

94.58

Total Other Purchased Services

\$16,125.40

Total 2730 Monitoring Services

\$18,237.81

General Fund (10)

	<u>Elementary</u>	<u>Secondary</u>	<u>Federal</u>	<u>Total</u>
2740 Vehicle Servicing and Maintenance Services				
300 <u>Purchased Professional and Technical Services</u>				
340 Technical Services				5,102.95
Total Purchased Professional and Technical Services				\$5,102.95
600 <u>Supplies</u>				
620 Energy				26,334.79
Total Supplies				\$26,334.79
Total 2740 Vehicle Servicing and Maintenance Services				\$31,437.74

LEA : 112671803 Dover Area SD

Printed 3/25/2020 8:28:10 AM

General Fund (10)

2750 Nonpublic Transportation

Elementary

Secondary

Federal

Total

500 Other Purchased Services

513 Contracted Carriers

324,799.59

Total Other Purchased Services

\$324,799.59

Total 2750 Nonpublic Transportation

\$324,799.59

General Fund (10)

	<u>Elementary</u>	<u>Secondary</u>	<u>Federal</u>	<u>Total</u>
2800 Support Services – Central				
100 Personnel Services – Salaries				
100 Personnel Services – Salaries				336,191.61
Total Personnel Services – Salaries				\$336,191.61
200 Personnel Services – Employee Benefits				
210 Group Insurance – Contracted Provider				627.73
220 Social Security Contributions				24,765.43
230 PSERS Retirement Contributions				112,037.81
240 Tuition Reimbursement				24,006.85
260 Workers' Compensation				2,141.49
270 Group Insurance – Self-Insurance				90,460.68
291 Other Retirement Plans				1,500.00
Total Personnel Services – Employee Benefits				\$255,539.99
300 Purchased Professional and Technical Services				
330 Other Professional Services				13,417.31
340 Technical Services				2,210.00
360 Employee Training and Development Services				14,464.14
390 Other Purchased Professional and Technical Services				150.00
Total Purchased Professional and Technical Services				\$30,241.45
500 Other Purchased Services				
549 Other Advertising/Public Relations				3,077.60
580 Travel				3,377.96
Total Other Purchased Services				\$6,455.56
600 Supplies				
610 General Supplies				36.90
630 Food				7,332.12
Total Supplies				\$7,369.02
Total 2800 Support Services – Central				\$635,797.63

General Fund (10)

	<u>Elementary</u>	<u>Secondary</u>	<u>Federal</u>	<u>Total</u>
2810 Planning, Research, Development and Evaluation Services				
300 <u>Purchased Professional and Technical Services</u>				
330 Other Professional Services				2,173.25
Total Purchased Professional and Technical Services				\$2,173.25
Total 2810 Planning, Research, Development and Evaluation Services				\$2,173.25

General Fund (10)

2830 Staff Services

	<u>Elementary</u>	<u>Secondary</u>	<u>Federal</u>	<u>Total</u>
100 Personnel Services – Salaries				
100 Personnel Services – Salaries				99,384.11
Total Personnel Services – Salaries				\$99,384.11
200 Personnel Services – Employee Benefits				
210 Group Insurance – Contracted Provider				482.13
220 Social Security Contributions				7,178.55
230 PSERS Retirement Contributions				33,224.11
240 Tuition Reimbursement				24,006.85
260 Workers' Compensation				632.99
270 Group Insurance – Self-Insurance				23,970.37
291 Other Retirement Plans				1,500.00
Total Personnel Services – Employee Benefits				\$90,995.00
300 Purchased Professional and Technical Services				
330 Other Professional Services				11,244.06
340 Technical Services				2,210.00
360 Employee Training and Development Services				14,464.14
390 Other Purchased Professional and Technical Services				150.00
Total Purchased Professional and Technical Services				\$28,068.20
500 Other Purchased Services				
549 Other Advertising/Public Relations				3,077.60
580 Travel				3,377.96
Total Other Purchased Services				\$6,455.56
600 Supplies				
610 General Supplies				36.90
630 Food				7,332.12
Total Supplies				\$7,369.02
Total 2830 Staff Services				\$232,271.89

General Fund (10)

2831 Supervision of Staff Services

Elementary

Secondary

Federal

Total

100 Personnel Services – Salaries

100 Personnel Services – Salaries

99,384.11

Total Personnel Services – Salaries

\$99,384.11

200 Personnel Services – Employee Benefits

210 Group Insurance – Contracted Provider

482.13

220 Social Security Contributions

7,178.55

230 PSERS Retirement Contributions

33,224.11

260 Workers' Compensation

632.99

270 Group Insurance – Self-Insurance

23,970.37

291 Other Retirement Plans

1,500.00

Total Personnel Services – Employee Benefits

\$66,988.15

300 Purchased Professional and Technical Services

330 Other Professional Services

880.00

340 Technical Services

2,210.00

Total Purchased Professional and Technical Services

\$3,090.00

500 Other Purchased Services

549 Other Advertising/Public Relations

3,077.60

580 Travel

106.72

Total Other Purchased Services

\$3,184.32

600 Supplies

610 General Supplies

36.90

Total Supplies

\$36.90

Total 2831 Supervision of Staff Services

\$172,683.48

LEA : 112671803 Dover Area SD

Printed 3/25/2020 8:28:10 AM

General Fund (10)

2832 Recruitment and Placement Services

Elementary

Secondary

Federal

Total

300 Purchased Professional and Technical Services

390 Other Purchased Professional and Technical Services

150.00

Total Purchased Professional and Technical Services

\$150.00

Total 2832 Recruitment and Placement Services

\$150.00

General Fund (10)

2834 Staff Development Services – Non-Instructional, Certified Staff Only

Elementary

Secondary

Federal

Total

200 Personnel Services – Employee Benefits

240 Tuition Reimbursement

11,394.50

Total Personnel Services – Employee Benefits

\$11,394.50

300 Purchased Professional and Technical Services

330 Other Professional Services

2,324.06

360 Employee Training and Development Services

8,144.50

Total Purchased Professional and Technical Services

\$10,468.56

500 Other Purchased Services

580 Travel

2,060.20

Total Other Purchased Services

\$2,060.20

600 Supplies

630 Food

6,613.79

Total Supplies

\$6,613.79

Total 2834 Staff Development Services – Non-Instructional, Certified Staff Only

\$30,537.05

LEA : 112671803 Dover Area SD

Printed 3/25/2020 8:28:10 AM

General Fund (10)

2835 Health Services

300 Purchased Professional and Technical Services

330 Other Professional Services

Elementary

Secondary

Federal

Total

Total Purchased Professional and Technical Services

8,040.00

\$8,040.00

Total 2835 Health Services

\$8,040.00

General Fund (10)

	<u>Elementary</u>	<u>Secondary</u>	<u>Federal</u>	<u>Total</u>
2836 Staff Development Services – Non-Instructional, Non-Certified Staff Only				
200 Personnel Services – Employee Benefits				
240 Tuition Reimbursement				12,612.35
Total Personnel Services – Employee Benefits				\$12,612.35
300 Purchased Professional and Technical Services				
360 Employee Training and Development Services				6,319.64
Total Purchased Professional and Technical Services				\$6,319.64
500 Other Purchased Services				
580 Travel				1,211.04
Total Other Purchased Services				\$1,211.04
Total 2836 Staff Development Services – Non-Instructional, Non-Certified Staff Only				\$20,143.03

LEA : 112671803 Dover Area SD

Printed 3/25/2020 8:28:10 AM

General Fund (10)

2839 Other Staff Services

Elementary

Secondary

Federal

Total

600 Supplies

630 Food

718.33

Total Supplies

\$718.33

Total 2839 Other Staff Services

\$718.33

General Fund (10)

2840 Data Processing Services

Elementary

Secondary

Federal

Total

100 Personnel Services – Salaries

100 Personnel Services – Salaries

236,807.50

Total Personnel Services – Salaries

\$236,807.50

200 Personnel Services – Employee Benefits

210 Group Insurance – Contracted Provider

145.60

220 Social Security Contributions

17,586.88

230 PSERS Retirement Contributions

78,813.70

260 Workers' Compensation

1,508.50

270 Group Insurance – Self-Insurance

66,490.31

Total Personnel Services – Employee Benefits

\$164,544.99

Total 2840 Data Processing Services

\$401,352.49

LEA : 112671803 Dover Area SD

Printed 3/25/2020 8:28:10 AM

General Fund (10)

2900 Other Support Services

Elementary

Secondary

Federal

Total

500 Other Purchased Services

595 IU Payments By Withholding

19,462.07

Total Other Purchased Services

\$19,462.07

Total 2900 Other Support Services

\$19,462.07

LEA : 112671803 Dover Area SD

Printed 3/25/2020 8:28:10 AM

General Fund (10)

2910 Support Services Not Listed Elsewhere In the 2000 Series

Elementary

Secondary

Federal

Total

500 Other Purchased Services

595 IU Payments By Withholding

19,462.07

Total Other Purchased Services

\$19,462.07

Total 2910 Support Services Not Listed Elsewhere In the 2000 Series

\$19,462.07

General Fund (10)

3000 Operation of Non-Instructional Services

Total

100 Personnel Services – Salaries

100 Personnel Services – Salaries 501,761.56

Total Personnel Services – Salaries \$501,761.56

200 Personnel Services – Employee Benefits

210 Group Insurance – Contracted Provider 519.24

220 Social Security Contributions 37,973.34

230 PSERS Retirement Contributions 164,573.32

250 Unemployment Compensation 1,493.06

260 Workers' Compensation 3,160.92

270 Group Insurance – Self-Insurance 21,939.67

Total Personnel Services – Employee Benefits \$229,659.55

300 Purchased Professional and Technical Services

330 Other Professional Services 11,585.00

340 Technical Services 47,950.00

Total Purchased Professional and Technical Services \$59,535.00

400 Purchased Property Services

430 Repairs and Maintenance Services 20,941.74

440 Rentals 718.75

Total Purchased Property Services \$21,660.49

500 Other Purchased Services

510 Student Transportation Services 60,912.38

520 Insurance – General 7,912.00

550 Printing and Binding 2,982.45

580 Travel 9,080.97

Total Other Purchased Services \$80,887.80

600 Supplies

610 General Supplies 119,164.26

630 Food 9,471.82

650 Supplies & Fees – Technology Related 2,957.00

Total Supplies \$131,593.08

800 Other Objects

810 Dues and Fees 4,638.88

890 Miscellaneous Expenditures 2,273.68

Total Other Objects \$6,912.56

Total 3000 Operation of Non-Instructional Services \$1,032,010.04

General Fund (10)

3200 Student Activities

Elementary

Secondary

Federal

Total

100 Personnel Services – Salaries

100 Personnel Services – Salaries 501,761.56

Total Personnel Services – Salaries \$501,761.56

200 Personnel Services – Employee Benefits

210 Group Insurance – Contracted Provider 519.24

220 Social Security Contributions 37,973.34

230 PSERS Retirement Contributions 164,573.32

250 Unemployment Compensation 1,493.06

260 Workers' Compensation 3,160.92

270 Group Insurance – Self-Insurance 21,939.67

Total Personnel Services – Employee Benefits \$229,659.55

300 Purchased Professional and Technical Services

330 Other Professional Services 11,585.00

340 Technical Services 47,950.00

Total Purchased Professional and Technical Services \$59,535.00

400 Purchased Property Services

430 Repairs and Maintenance Services 20,941.74

440 Rentals 718.75

Total Purchased Property Services \$21,660.49

500 Other Purchased Services

510 Student Transportation Services 60,912.38

520 Insurance – General 7,912.00

550 Printing and Binding 2,982.45

580 Travel 9,080.97

Total Other Purchased Services \$80,887.80

600 Supplies

610 General Supplies 117,056.74

630 Food 8,386.82

650 Supplies & Fees – Technology Related 2,957.00

Total Supplies \$128,400.56

800 Other Objects

810 Dues and Fees 4,638.88

890 Miscellaneous Expenditures 2,273.68

Total Other Objects \$6,912.56

Total 3200 Student Activities \$1,028,817.52

LEA : 112671803 Dover Area SD

Printed 3/25/2020 8:28:17 AM

General Fund (10)

3300 Community Services

600 Supplies

610 General Supplies

630 Food

Total Supplies

Total 3300 Community Services

Elementary

Secondary

Federal

Total

2,107.52

2,107.52

1,085.00

1,085.00

\$3,192.52

\$3,192.52

\$3,192.52

\$3,192.52

General Fund (10)

5000 Other Expenditures and Financing Uses

Total

800 Other Objects

830 Interest	2,095,478.15
880 Refunds of Prior Years' Receipts	287,305.62

Total Other Objects	\$2,382,783.77
----------------------------	-----------------------

900 Other Uses of Funds

910 Redemption of Principal	4,311,277.51
932 Capital Reserve Fund Transfers Applicable To Fund 32	1,013,844.00

Total Other Uses of Funds	\$5,325,121.51
----------------------------------	-----------------------

Total 5000 Other Expenditures and Financing Uses	\$7,707,905.28
---	-----------------------

LEA : 112671803 Dover Area SD

Printed 3/25/2020 8:28:26 AM

General Fund (10)

5100 Debt Service / Other Expenditures and Financing Uses	<u>Elementary</u>	<u>Secondary</u>	<u>Federal</u>	<u>Total</u>
800 Other Objects				
830 Interest				2,095,478.15
880 Refunds of Prior Years' Receipts				287,305.62
Total Other Objects				\$2,382,783.77
900 Other Uses of Funds				
910 Redemption of Principal				4,311,277.51
Total Other Uses of Funds				\$4,311,277.51
Total 5100 Debt Service / Other Expenditures and Financing Uses				\$6,694,061.28

LEA : 112671803 Dover Area SD

Printed 3/25/2020 8:28:26 AM

General Fund (10)

	<u>Elementary</u>	<u>Secondary</u>	<u>Federal</u>	<u>Total</u>
5110 Debt Service				
800 Other Objects				
830 Interest				2,095,478.15
Total Other Objects				\$2,095,478.15
900 Other Uses of Funds				
910 Redemption of Principal				4,311,277.51
Total Other Uses of Funds				\$4,311,277.51
Total 5110 Debt Service				\$6,406,755.66

LEA : 112671803 Dover Area SD

Printed 3/25/2020 8:28:26 AM

General Fund (10)

	<u>Elementary</u>	<u>Secondary</u>	<u>Federal</u>	<u>Total</u>
5130 Refund of Prior Year Revenues / Receipts				
800 <u>Other Objects</u>				
880 Refunds of Prior Years' Receipts				287,305.62
Total Other Objects				\$287,305.62
Total 5130 Refund of Prior Year Revenues / Receipts				\$287,305.62

LEA : 112671803 Dover Area SD

Printed 3/25/2020 8:28:26 AM

General Fund (10)

	<u>Elementary</u>	<u>Secondary</u>	<u>Federal</u>	<u>Total</u>
5200 Interfund Transfers – Out				
900 Other Uses of Funds				
932 Capital Reserve Fund Transfers Applicable To Fund 32				1,013,844.00
Total Other Uses of Funds				\$1,013,844.00
Total 5200 Interfund Transfers – Out				\$1,013,844.00

LEA : 112671803 Dover Area SD

Printed 3/25/2020 8:28:26 AM

General Fund (10)

5230 Capital Projects Fund Transfers

Elementary

Secondary

Federal

Total

900 Other Uses of Funds

932 Capital Reserve Fund Transfers Applicable To Fund 32

1,013,844.00

Total Other Uses of Funds

\$1,013,844.00

Total 5230 Capital Projects Fund Transfers

\$1,013,844.00

LEA : 112671803 Dover Area SD

Printed 3/25/2020 8:28:12 AM

Capital Reserve Fund - § 1431 (32)

2000 Support Services

700 Property

752 Capital Equipment – Original and Additional

9,860.00

762 Capitalized Equipment - Replacement

49,450.69

Total Property **\$59,310.69**

Total 2000 Support Services **\$59,310.69**

LEA : 112671803 Dover Area SD

Printed 3/25/2020 8:28:12 AM

Capital Reserve Fund - § 1431 (32)

2600 Operation and Maintenance of Plant Services

Elementary

Secondary

Federal

Total

700 Property

752 Capital Equipment – Original and Additional

9,860.00

762 Capitalized Equipment - Replacement

49,450.69

Total Property

\$59,310.69

Total 2600 Operation and Maintenance of Plant Services

\$59,310.69

LEA : 112671803 Dover Area SD

Printed 3/25/2020 8:28:12 AM

Capital Reserve Fund - § 1431 (32)

2620 Operation of Buildings Services

Elementary

Secondary

Federal

Total

700 Property

752 Capital Equipment – Original and Additional

9,860.00

762 Capitalized Equipment - Replacement

49,450.69

Total Property

\$59,310.69

Total 2620 Operation of Buildings Services

\$59,310.69

Capital Reserve Fund - § 1431 (32)

4000 Facilities Acquisition, Construction and Improvement Services

Total

300 Purchased Professional and Technical Services

330 Other Professional Services

990.50

Total Purchased Professional and Technical Services

\$990.50

400 Purchased Property Services

430 Repairs and Maintenance Services

24,840.00

Total Purchased Property Services

\$24,840.00

Total 4000 Facilities Acquisition, Construction and Improvement Services

\$25,830.50

LEA : 112671803 Dover Area SD

Printed 3/25/2020 8:28:21 AM

Capital Reserve Fund - § 1431 (32)

4100 Site Acquisition Services – Original and Additional

Elementary

Secondary

Federal

Total

300 Purchased Professional and Technical Services

330 Other Professional Services

990.50

Total Purchased Professional and Technical Services

\$990.50

Total 4100 Site Acquisition Services – Original and Additional

\$990.50

LEA : 112671803 Dover Area SD

Printed 3/25/2020 8:28:21 AM

Capital Reserve Fund - § 1431 (32)

4600 Existing Building Improvement Services

Elementary

Secondary

Federal

Total

400 Purchased Property Services

430 Repairs and Maintenance Services

24,840.00

Total Purchased Property Services

\$24,840.00

Total 4600 Existing Building Improvement Services

\$24,840.00

LEA : 112671803 Dover Area SD

Printed 3/25/2020 8:28:14 AM

Other Capital Projects Fund (39)

2000 Support Services

800 Other Objects

810 Dues and Fees

492,375.73

Total Other Objects

\$492,375.73

Total 2000 Support Services

\$492,375.73

LEA : 112671803 Dover Area SD

Printed 3/25/2020 8:28:14 AM

Other Capital Projects Fund (39)

2300 Support Services – Administration

Elementary

Secondary

Federal

Total

800 Other Objects

810 Dues and Fees

492,375.73

Total Other Objects

\$492,375.73

Total 2300 Support Services – Administration

\$492,375.73

LEA : 112671803 Dover Area SD

Printed 3/25/2020 8:28:14 AM

Other Capital Projects Fund (39)

2390 Other Administration Services

Elementary

Secondary

Federal

Total

800 Other Objects

810 Dues and Fees

492,375.73

Total Other Objects

\$492,375.73

Total 2390 Other Administration Services

\$492,375.73

Other Capital Projects Fund (39)

4000 Facilities Acquisition, Construction and Improvement Services

Total

300 Purchased Professional and Technical Services

330 Other Professional Services 859,485.89

Total Purchased Professional and Technical Services \$859,485.89

400 Purchased Property Services

450 Construction Services 20,962,902.42

490 Other Purchased Property Services 1,174,011.30

Total Purchased Property Services \$22,136,913.72

500 Other Purchased Services

520 Insurance – General 36,362.00

Total Other Purchased Services \$36,362.00

Total 4000 Facilities Acquisition, Construction and Improvement Services \$23,032,761.61

LEA : 112671803 Dover Area SD

Printed 3/25/2020 8:28:22 AM

Other Capital Projects Fund (39)

4300 Architecture and Engineering Services / Educational Specifications Development – Original and Additional

Elementary

Secondary

Federal

Total

300 Purchased Professional and Technical Services

330 Other Professional Services

16,817.92

Total Purchased Professional and Technical Services

\$16,817.92

Total 4300 Architecture and Engineering Services / Educational Specifications Development – Original and Additional

\$16,817.92

Other Capital Projects Fund (39)

4500 Building Acquisition and Construction Services – Original and Additional	<u>Elementary</u>	<u>Secondary</u>	<u>Federal</u>	<u>Total</u>
300 <u>Purchased Professional and Technical Services</u>				
330 Other Professional Services				842,667.97
Total Purchased Professional and Technical Services				\$842,667.97
400 <u>Purchased Property Services</u>				
450 Construction Services				20,962,902.42
490 Other Purchased Property Services				1,174,011.30
Total Purchased Property Services				\$22,136,913.72
500 <u>Other Purchased Services</u>				
520 Insurance – General				36,362.00
Total Other Purchased Services				\$36,362.00
Total 4500 Building Acquisition and Construction Services – Original and Additional				\$23,015,943.69

	<u>General Fund(10)</u>	<u>Public Purpose Trust(27)</u>	<u>Other Compt Approved (28)</u>	<u>Athletic / Activity(29)</u>	<u>Capital Reserve (690, 1850)(31)</u>
1000 Instruction					
1100 Regular Programs - Elementary / Secondary	24,601,849.04				
1200 Special Programs - Elementary / Secondary	9,342,252.06				
1300 Vocational Education	3,067,356.91				
1400 Other Instructional Programs - Elementary / Secondary	695,394.20				
1700 Higher Education Programs for Secondary Students	24,150.00				
Total Instruction	\$37,731,002.21				
2000 Support Services					
2100 Support Services - Students	1,660,634.76				
2200 Support Services - Instructional Staff	4,206,804.41				
2300 Support Services - Administration	2,673,052.86				
2400 Support Services - Pupil Health	750,990.78				
2500 Support Services - Business	881,459.26				
2600 Operation and Maintenance of Plant Services	4,367,368.43				
2700 Student Transportation Services	3,345,115.91				
2800 Support Services - Central	635,797.63				
2900 Other Support Services	19,462.07				
Total Support Services	\$18,540,686.11				
3000 Operation of Non-Instructional Services					
3200 Student Activities	1,028,817.52				
3300 Community Services	3,192.52				
Total Operation of Non-Instructional Services	\$1,032,010.04				
4000 Facilities Acquisition, Construction and Improvement Services					
4100 Site Acquisition Services - Original and Additional					
4300 Architecture and Engineering Services / Educational Specifications Development - Original and Additional					
4500 Building Acquisition and Construction Services - Original and Additional					
4600 Existing Building Improvement Services					
Total Facilities Acquisition, Construction and Improvement Services					
5000 Other Expenditures and Financing Uses					
5100 Debt Service / Other Expenditures and Financing Uses	6,694,061.28				
5200 Interfund Transfers - Out	1,013,844.00				
Total Other Expenditures and Financing Uses	\$7,707,905.28				
TOTAL ACTUAL EXPENDITURES & OTHER FINANCING USES	\$65,011,603.64				

LEA : 112671803 Dover Area SD

Printed 3/25/2020 8:28:37 AM

	<u>Capital Reserve (1431)(32)</u>	<u>Other Capital Projects Fund(39)</u>	<u>Debt Service(40)</u>	<u>Permanent(90)</u>	<u>Total</u>
1000 Instruction					
1100 Regular Programs - Elementary / Secondary					24,601,849.04
1200 Special Programs - Elementary / Secondary					9,342,252.06
1300 Vocational Education					3,067,356.91
1400 Other Instructional Programs - Elementary / Secondary					695,394.20
1700 Higher Education Programs for Secondary Students					24,150.00
Total Instruction					\$37,731,002.21
2000 Support Services					
2100 Support Services - Students					1,660,634.76
2200 Support Services - Instructional Staff					4,206,804.41
2300 Support Services - Administration		492,375.73			3,165,428.59
2400 Support Services - Pupil Health					750,990.78
2500 Support Services - Business					881,459.26
2600 Operation and Maintenance of Plant Services	59,310.69				4,426,679.12
2700 Student Transportation Services					3,345,115.91
2800 Support Services - Central					635,797.63
2900 Other Support Services					19,462.07
Total Support Services	\$59,310.69	\$492,375.73			\$19,092,372.53
3000 Operation of Non-Instructional Services					
3200 Student Activities					1,028,817.52
3300 Community Services					3,192.52
Total Operation of Non-Instructional Services					\$1,032,010.04
4000 Facilities Acquisition, Construction and Improvement Services					
4100 Site Acquisition Services - Original and Additional	990.50				990.50
4300 Architecture and Engineering Services / Educational Specifications Development - Original and Additional		16,817.92			16,817.92
4500 Building Acquisition and Construction Services - Original and Additional		23,015,943.69			23,015,943.69
4600 Existing Building Improvement Services	24,840.00				24,840.00
Total Facilities Acquisition, Construction and Improvement Services	\$25,830.50	\$23,032,761.61			\$23,058,592.11
5000 Other Expenditures and Financing Uses					
5100 Debt Service / Other Expenditures and Financing Uses					6,694,061.28
5200 Interfund Transfers - Out					1,013,844.00
Total Other Expenditures and Financing Uses					\$7,707,905.28
TOTAL ACTUAL EXPENDITURES & OTHER FINANCING USES	\$85,141.19	\$23,525,137.34			\$88,621,882.17

PSERS Salary Data (Salary Data should relate to the General Fund only)

Amount Description	Amount
Total Salary Base for salaries subject to PSERS withholding	25,798,534.79
Total Federally Funded salaries subject to PSERS withholding	954,569.26
	<hr/>

Title I Expenditure Data

Amount Description	Amount
Expenditures Funded with Current Title I Funds	572,349.00
Expenditures Funded with Carry over Title I Funds	
Total Title I Expenditure Data	<hr/> \$572,349.00 <hr/>

Benefits for Staff Relative to Collective Bargaining Agreements

	OBJECT	COVERED	NOT COVERED	TOTAL
10 General Fund				
	211 Medical Insurance			
	212 Dental Insurance			
	215 Eye Care Insurance			
	216 Prescription Insurance			
	271 Self-Insurance Medical Benefits	3,683,712.00	460,566.00	4,144,278.00
	272 Self-Insurance Dental Benefits	180,355.00	18,227.00	198,582.00
	275 Self-Insurance Eye Care Benefits			
	276 Self-Insurance Prescription Benefits			
	FUND TOTAL	\$3,864,067.00	\$478,793.00	\$4,342,860.00
50 Enterprise Fund				
	211 Medical Insurance			
	212 Dental Insurance			
	215 Eye Care Insurance			
	216 Prescription Insurance			
	271 Self-Insurance Medical Benefits	70,113.00	8,829.00	78,942.00
	272 Self-Insurance Dental Benefits	2,639.00	323.00	2,962.00
	275 Self-Insurance Eye Care Benefits			
	276 Self-Insurance Prescription Benefits			
	FUND TOTAL	\$72,752.00	\$9,152.00	\$81,904.00
60 Internal Service Fund	No Self Insurance data to report			
	211 Medical Insurance			
	212 Dental Insurance			
	215 Eye Care Insurance			
	216 Prescription Insurance			
	271 Self-Insurance Medical Benefits			
	272 Self-Insurance Dental Benefits			
	275 Self-Insurance Eye Care Benefits			
	276 Self-Insurance Prescription Benefits			
	FUND TOTAL			
Total of All Funds		\$3,936,819.00	\$487,945.00	\$4,424,764.00

LEA : 112671803 Dover Area SD

Printed 3/25/2020 8:28:49 AM

Function	Special Education (Prior Year)	Nonspecial Education (Prior Year)	Total (Prior Year)	Special Education (Current Year)	Nonspecial Education (Current Year)	Total (Current Year)
2120 Guidance Services	225,408.30	908,414.83	1,133,823.13	214,187.94	863,195.79	1,077,383.73
2140 Psychological Services	421,391.31		421,391.31	300,923.66		300,923.66
2150 Speech Pathology and Audiology Services						
2160 Social Work Services				25,669.99	103,452.28	129,122.27
2260 Instruction and Curriculum Development Services	638,834.51	159,708.63	798,543.14	677,687.14	169,421.78	847,108.92
2350 Legal and Accounting Services	6,115.40	77,966.65	84,082.05	17,470.63	41,207.77	58,678.40
2420 Medical Services	141,337.42	650,701.93	792,039.35	149,299.79	601,690.99	750,990.78
2440 Nursing Services						
2700 Student Transportation Services	859,351.97	2,335,987.63	3,195,339.60	874,121.02	2,470,994.89	3,345,115.91
Total	\$2,292,438.91	\$4,132,779.67	\$6,425,218.58	\$2,259,360.17	\$4,249,963.50	\$6,509,323.67

(PRINCIPAL AMOUNTS ONLY)

GOVERNMENTAL FUNDS/ ACTIVITIES

	Short-Term Borrowing	General Obligation Bonds/Notes	Authority Building Obligations	Other Long-Term Debt	Other Post-Employment Benefits (OPEB)	Compensated Absences	Net Pension Liability	Total
1. Debt at Beginning of Fiscal Year		65,440,000.00		221,910.00	7,186,413.00	1,211,361.00	86,171,000.00	160,230,684.00
2. Additional Debt Incurred During Year		35,085,000.00		1,069,042.00	1,089,787.00	225,932.00		37,469,761.00
3. Retirements and Repayments		3,878,000.00		441,695.00		26,011.00	79,000.00	4,424,706.00
4. Debt at End of Fiscal Year		96,647,000.00		849,257.00	8,276,200.00	1,411,282.00	86,092,000.00	193,275,739.00
5. Accreted Interest at End Of Fiscal Year								
6. Total Debt and Accreted Interest		96,647,000.00		849,257.00	8,276,200.00	1,411,282.00	86,092,000.00	193,275,739.00
7. Current Portion P&I - Due within 1 year		7,947,956.00		307,376.56		11,220.00		8,266,552.56
8. Interest Paid during current fiscal year		2,091,422.00		4,216.27				2,095,638.27

(PRINCIPAL AMOUNTS ONLY)

PROPRIETARY FUNDS

	Short-Term Borrowing	General Obligation Bonds/Notes	Authority Building Obligations	Other Long-Term Debt	Other Post-Employment Benefits (OPEB)	Compensated Absences	Net Pension Liability	Total
1. Debt at Beginning of Fiscal Year					95,900.00	19,950.00	1,740,000.00	1,855,850.00
2. Additional Debt Incurred During Year					5,500.00	943.00	17,000.00	23,443.00
3. Retirements and Repayments						11,308.00		11,308.00
4. Debt at End of Fiscal Year					101,400.00	9,585.00	1,757,000.00	1,867,985.00
5. Accreted Interest at End Of Fiscal Year								
6. Total Debt and Accreted Interest					101,400.00	9,585.00	1,757,000.00	1,867,985.00
7. Current Portion P&I - Due within 1 year								
8. Interest Paid during current fiscal year								

Total Principal and Interest Payments Made by Your School - All Funds

Function	Fund		Principal (910)	Principal (920)	Interest (830)	Total (Principal +Interest)	Misc Other Uses (990)
5110	10	General Fund	4,311,277.51		2,095,478.15	6,406,755.66	
5110	20	Special Revenue Funds					
5110	30	Capital Projects Funds					
5110	40	Debt Service Fund					
5110	90	Permanent Fund					
5120	10	General Fund					
5120	20	Special Revenue Funds					
5120	30	Capital Projects Funds					
5120	40	Debt Service Fund					

Total Debt Payments - Governmental Funds			\$4,311,277.51		\$2,095,478.15	\$6,406,755.66	
---	--	--	-----------------------	--	-----------------------	-----------------------	--

Function	Fund		Principal (910)	Principal (920)	Interest (830)	Total (Principal +Interest)
5110	50	Enterprise Fund				
5110	60	Internal Service Fund				
5120	50	Enterprise Fund				
5120	60	Internal Service Fund				

Total Debt Payments - Proprietary Funds						
--	--	--	--	--	--	--

LEA : 112671803 Dover Area SD

Printed 3/25/2020 8:28:52 AM

Debt Details
Governmental Funds/ Activities

Debt Category	Debt Issue Date (MM/YYYY)	Principal Amounts Only			Debt at End of Fiscal Year	Current Portion Due Within One Year (Principal and Interest)	Interest Paid During Fiscal Year
		Debt at Beginning of Fiscal Year	Additions	Reductions / Repayments			
General Obligation Bonds/Notes – CIB	03/2019		35,085,000.00		35,085,000.00	1,642,448.00	
General Obligation Bonds/Notes – CIB	06/2018	29,205,000.00		5,000.00	29,200,000.00	1,421,176.00	1,081,866.00
General Obligation Bonds/Notes – CIB	11/2016	7,650,000.00		2,480,000.00	5,170,000.00	2,699,625.00	227,888.00
General Obligation Bonds/Notes – CIB	07/2015	8,470,000.00		555,000.00	7,915,000.00	777,663.00	232,925.00
General Obligation Bonds/Notes – CIB	08/2015	7,120,000.00		330,000.00	6,790,000.00	561,725.00	195,800.00
General Obligation Bonds/Notes – CIB	12/2008	12,995,000.00		508,000.00	12,487,000.00	845,319.00	352,943.00
Extended Term Financing Agreements		221,910.00	1,069,042.00	441,695.00	849,257.00	307,376.56	4,216.27
Compensated Absences		1,211,361.00	225,932.00	26,011.00	1,411,282.00	11,220.00	
Other Post-Employment Benefits (OPEB)		7,186,413.00	1,089,787.00		8,276,200.00		
Net Pension Liability		86,171,000.00		79,000.00	86,092,000.00		
Totals for Debt Entered:		\$160,230,684.00	\$37,469,761.00	\$4,424,706.00	\$193,275,739.00	\$8,266,552.56	\$2,095,638.27

Bond Details
Proprietary Funds

Debt Category	Debt Issue Date (MM/YYYY)	Principal Amounts Only			Debt at End of Fiscal Year	Current Portion Due Within One Year (Principal and Interest)	Interest Paid During Fiscal Year
		Debt at Beginning of Fiscal Year	Additions	Reductions / Repayments			
Compensated Absences		19,950.00	943.00	11,308.00	9,585.00		
Other Post-Employment Benefits (OPEB)		95,900.00	5,500.00		101,400.00		
Net Pension Liability		1,740,000.00	17,000.00		1,757,000.00		
Totals for Debt Entered:		\$1,855,850.00	\$23,443.00	\$11,308.00	\$1,867,985.00		

General Fund (10)

Section 1: Tuition/Purchased Services as Reported within Expenditure Detail

	Amount
Tuition Reported in General Fund Expenditures 1000-560	3,456,901.71
Purchased Services in General Fund Expenditures 1000-594 and 1000-597	

Section 1 Total	\$3,456,901.71
------------------------	-----------------------

Section 2: Tuition Paid to Institution Types During Fiscal Year

	Tuition Paid For Nonspecial Education	Tuition Paid For Special Education	Total
1 1306 Institutions			
2 Institutionalized Children's Programs			
3 Juveniles Incarcerated in Adult Facilities	2,484.15		2,484.15
4 Residential Treatment Facilities	261,312.20		261,312.20
5 Other Local Education Agencies	36,851.77	12,260.07	49,111.84
6 Brick and Mortar Charter Schools	160,152.46	103,218.81	263,371.27
7 Cyber Charter Schools	953,481.92	551,215.57	1,504,697.49
8 Career and Technology Centers	1,057,306.85	62,678.03	1,119,984.88
9 Approved Private Schools		43,543.58	43,543.58
10 PA Chartered Schools for the Deaf and Blind			
11 Private Residential Rehabilitative Institutions	101,173.60		101,173.60
12 Juvenile Detention Centers			
13 Special Program Jointures			
14 Other Tuition Not Included Elsewhere In This Section	111,222.70		111,222.70
Section 2 Total	\$2,683,985.65	\$772,916.06	\$3,456,901.71

- 1 . Student Transportation Services for Educational Field Trips

- 2 . Student Transportation Services for Student Activities 7,999.07

- 3 . Rental of Vehicles for Student Transportation Services

- 4 . Capital Reserve Funds

Include only district-owned transportation expenditures paid from State or local money.
 DO NOT include federal expenditures or payments to contract service providers.
 Contracted transportation services should not be recorded on this schedule.

Food Service / Cafeteria Operations Fund (51)

3000 Operation of Non-Instructional Services

Total

100 Personnel Services – Salaries

100 Personnel Services – Salaries 504,798.91

Total Personnel Services – Salaries \$504,798.91

200 Personnel Services – Employee Benefits

210 Group Insurance – Contracted Provider 691.64

220 Social Security Contributions 38,853.49

230 PSERS Retirement Contributions 218,709.86

260 Workers' Compensation 3,227.87

270 Group Insurance – Self-Insurance 81,904.24

280 Other Post-Employment Benefits (OPEB) 2,423.00

291 Other Retirement Plans 1,500.00

Total Personnel Services – Employee Benefits \$347,310.10

300 Purchased Professional and Technical Services

330 Other Professional Services 90.00

390 Other Purchased Professional and Technical Services 603.00

Total Purchased Professional and Technical Services \$693.00

400 Purchased Property Services

430 Repairs and Maintenance Services 10,850.68

Total Purchased Property Services \$10,850.68

500 Other Purchased Services

580 Travel 85.02

Total Other Purchased Services \$85.02

600 Supplies

610 General Supplies 46,085.01

630 Food 616,644.82

Total Supplies \$662,729.83

700 Property

740 Depreciation 12,534.41

Total Property \$12,534.41

800 Other Objects

810 Dues and Fees 15,316.63

Total Other Objects \$15,316.63

Total 3000 Operation of Non-Instructional Services \$1,554,318.58

Food Service / Cafeteria Operations Fund (51)

	<u>Elementary</u>	<u>Secondary</u>	<u>Federal</u>	<u>Total</u>
3100 Food Services				
100 Personnel Services – Salaries				
100 Personnel Services – Salaries			504,798.91	504,798.91
Total Personnel Services – Salaries			\$504,798.91	\$504,798.91
200 Personnel Services – Employee Benefits				
210 Group Insurance – Contracted Provider			691.64	691.64
220 Social Security Contributions			38,853.49	38,853.49
230 PSERS Retirement Contributions			218,709.86	218,709.86
260 Workers' Compensation			3,227.87	3,227.87
270 Group Insurance – Self-Insurance				81,904.24
280 Other Post-Employment Benefits (OPEB)				2,423.00
291 Other Retirement Plans				1,500.00
Total Personnel Services – Employee Benefits			\$261,482.86	\$347,310.10
300 Purchased Professional and Technical Services				
330 Other Professional Services				90.00
390 Other Purchased Professional and Technical Services				603.00
Total Purchased Professional and Technical Services				\$693.00
400 Purchased Property Services				
430 Repairs and Maintenance Services				10,850.68
Total Purchased Property Services				\$10,850.68
500 Other Purchased Services				
580 Travel				85.02
Total Other Purchased Services				\$85.02
600 Supplies				
610 General Supplies				46,085.01
630 Food			235,537.23	616,644.82
Total Supplies			\$235,537.23	\$662,729.83
700 Property				
740 Depreciation				12,534.41
Total Property				\$12,534.41
800 Other Objects				
810 Dues and Fees				15,316.63
Total Other Objects				\$15,316.63
Total 3100 Food Services			\$1,001,819.00	\$1,554,318.58

	<u>Food Service(51)</u>	<u>Child Care Operations(52)</u>	<u>Other Enterprise(58)</u>	<u>Internal Service(60)</u>	<u>Total</u>
3000 <u>Operation of Non-Instructional Services</u>					
3100 Food Services	1,554,318.58				1,554,318.58
Total Operation of Non-Instructional Services	\$1,554,318.58				\$1,554,318.58
TOTAL ACTUAL EXPENDITURES & OTHER FINANCING USES	\$1,554,318.58				\$1,554,318.58

LEA : 112671803 Dover Area SD

Printed 3/25/2020 8:29:10 AM

Fund	School	School Number	Local Personnel	Local Nonpersonnel	State Personnel	State Nonpersonnel	Federal Personnel	Federal Nonpersonnel	Total	Explanation
10	Dover Area El Sch	8229	3,276,365.86	520,978.71	2,110,621.74	335,612.39	94,624.89	9,930.32	6,348,133.91	
	Dover Area HS	4558	6,990,500.68	1,439,148.63	4,503,252.43	927,093.78	11,402.21	20,315.96	13,891,713.69	
	Dover Area Intrmd Sch	6283	4,076,285.29	912,341.72	2,625,926.63	587,726.87	104,349.37	11,469.73	8,318,099.61	
	Leib El Sch	4557	3,225,708.48	525,278.27	2,077,988.47	338,382.16	165,959.89	10,414.55	6,343,731.82	
	North Salem El Sch	7555	3,250,023.15	565,511.18	2,093,651.88	364,300.03	87,345.43	9,793.00	6,370,624.67	
	Weigelstown El Sch	4556	3,395,745.49	551,766.11	2,187,525.62	355,445.42	170,969.17	10,349.50	6,671,801.31	
Total			24,214,628.95	4,515,024.62	15,598,966.77	2,908,560.65	634,650.96	72,273.06	47,944,105.01	